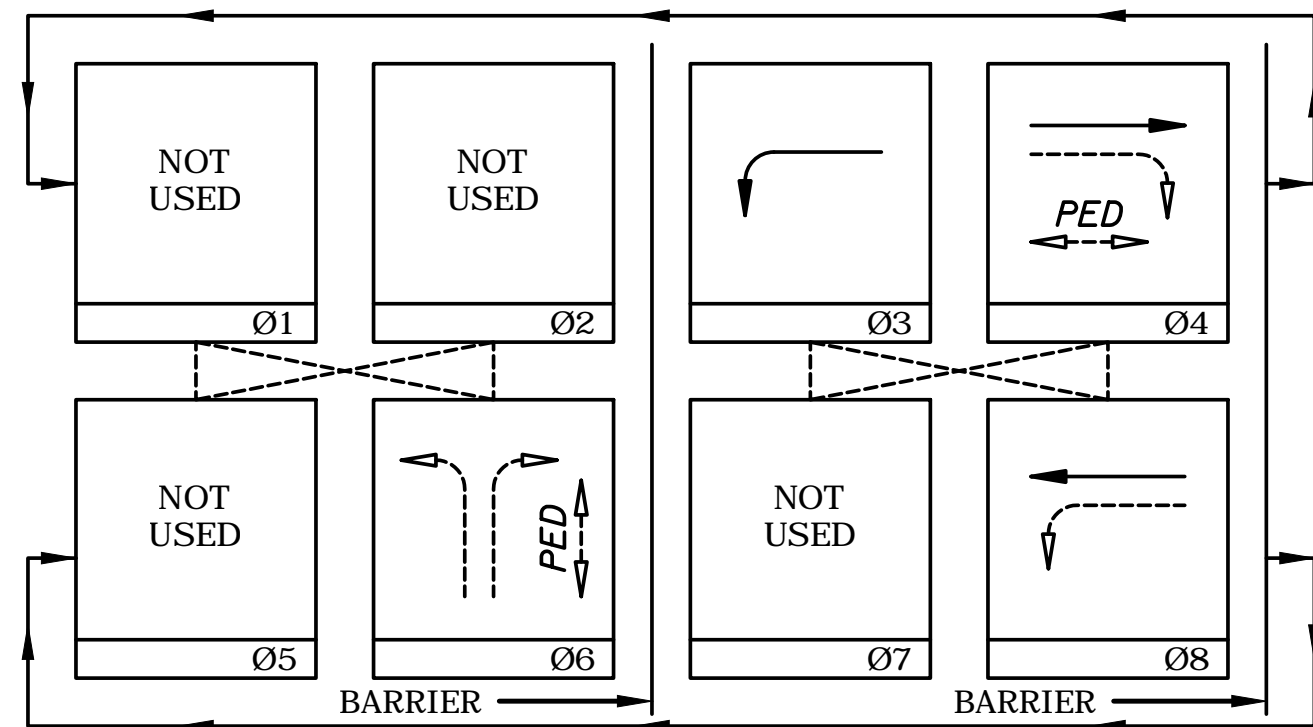


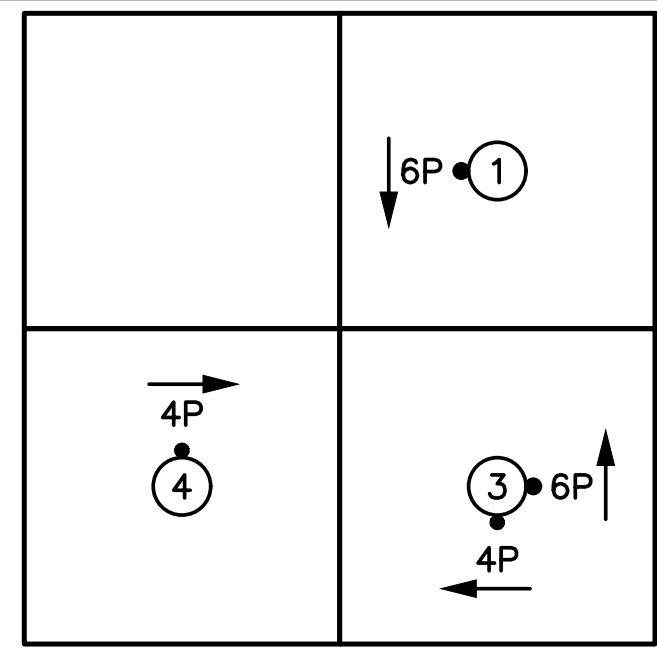
PHASE DIAGRAM



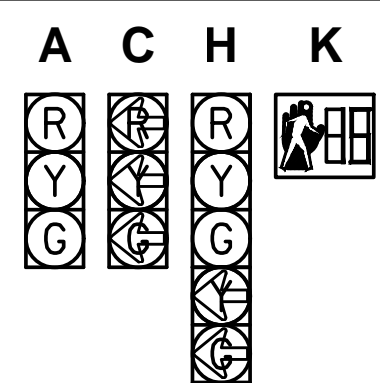
NOTE:
DASHED LINES CONNECTING PHASES DENOTE NON-CONFLICTING SIGNAL PHASES THAT CAN OCCUR CONCURRENTLY.

MOVEMENTS
 ——— PROTECTED PHASE
 - - - - PERMITTED PHASE

PEDESTRIAN PUSHBUTTON LOCATION & DESIGNATION



TRAFFIC SIGNAL HEADS

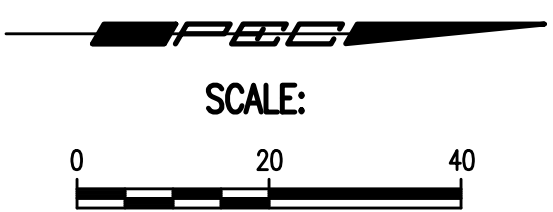
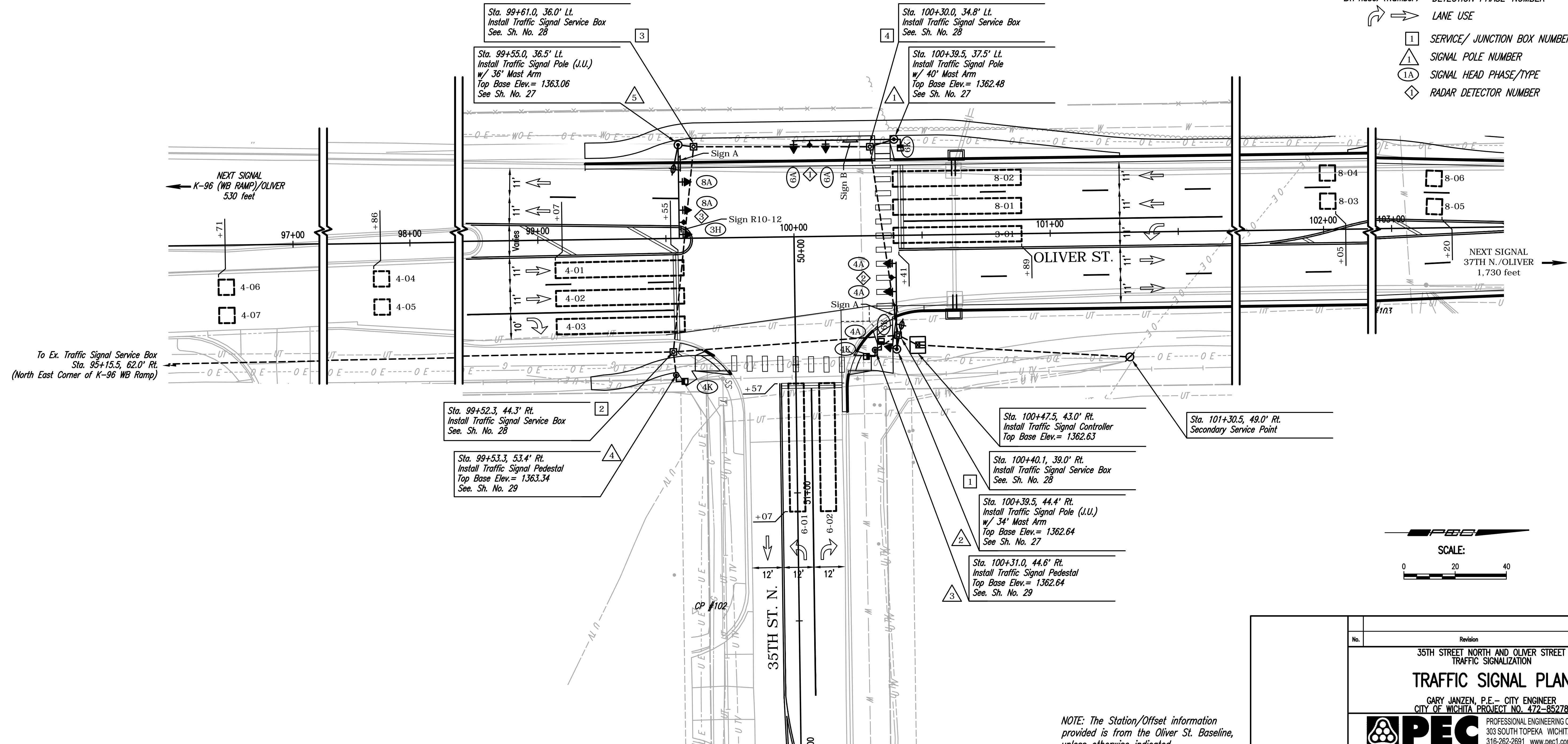
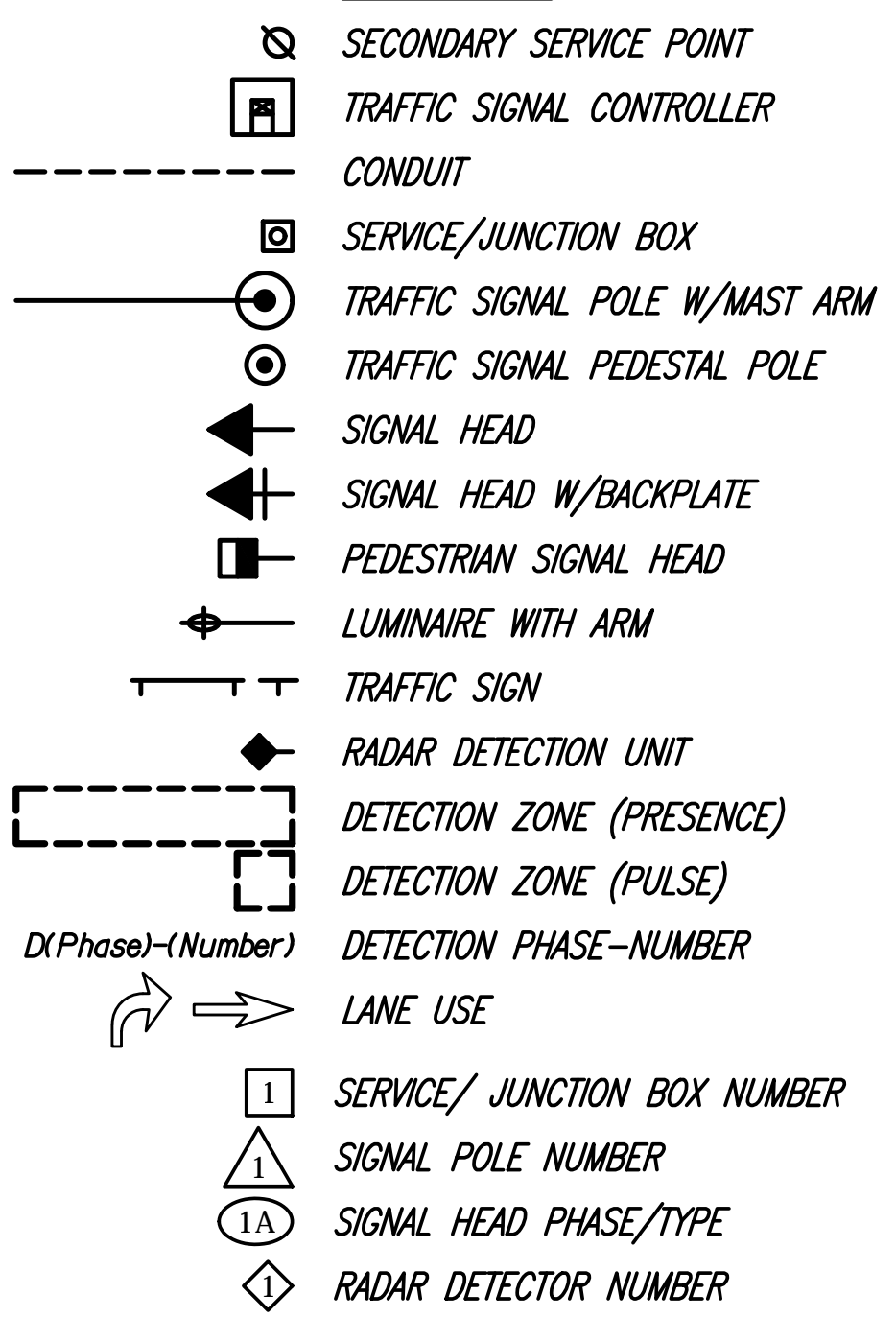


NOTE:
ALL INDICATIONS SHALL BE L.E.D. DISPLAYS (12" DIA. LENS). EXCEPT PEDESTRIAN DISPLAYS WHICH SHALL BE 18" WIDE x 16" TALL.

GENERAL NOTES

- All Signal Heads shall have 12" L.E.D. lenses.
- Placement of Signal Poles, Service/Junction Boxes, Conduit runs and Controller are typical and may be adjusted as directed by Engineer to facilitate installation.
- Utility locations are approximate. The Contractor shall be responsible for locating all underground utilities prior to construction.
- The Contractor shall coordinate with Westar Energy for the exact location of the meter and disconnect box and for the connection of power for the traffic signal installation.
- Detections loops (either induction, video or radar) shall be centered within its lane.

LEGEND



Sowed: 03-30-2017 10:27:52 AM by CP
 Plot Scale: 1:1 04-04-2017 9:45:48 AM by CP
 U:\Wichita-Civil\2015\15954\Drawings\15954-000-24C-TRAFFIC SIGNAL PLAN

NOTE: The Station/Offset information provided is from the Oliver St. Baseline, unless otherwise indicated.

No.	Revision	By	Date
35TH STREET NORTH AND OLIVER STREET TRAFFIC SIGNALIZATION TRAFFIC SIGNAL PLAN GARY JANZEN, P.E. - CITY ENGINEER CITY OF WICHITA PROJECT NO. 472-85278			
		PROFESSIONAL ENGINEERING CONSULTANTS, P.A. 303 SOUTH TOPEKA WICHITA, KS 67202 316-262-2691 www.pec1.com	
Designed by	SAC, BMM	Job No.	31-15954-000
Drawn by	BJS	Date	April 2017
			Sht. 24 of 36