

UTILITIES CONTACTS

LoDONNA LAWRENZ
WICHITA SANITARY SEWER
8TH FLOOR-CITY HALL
455 N. MAIN
WICHITA, KS 67202
(316) 268-4329

ZACH LAWS
WESTAR ENERGY
1900 E. CENTRAL (3RD FLOOR)
PO BOX 208
WICHITA, KS 67201
(316) 261-6264

GREG LOLLEY
WICHITA WATER
8TH FLOOR-CITY HALL
455 N. MAIN
WICHITA, KS 67202
(316) 268-4334

JASON EDWARDS
AT&T WICHITA CENTRAL UNIT
154 N. BROADWAY, RM 210
WICHITA, KS 67202
(316) 268-2008

JOE HICKLE
WICHITA STORM SEWER
8TH FLOOR-CITY HALL
455 N. MAIN
WICHITA, KS 67202
(316) 268-4307

JIM COE
KANSAS GAS SERVICE
1021 E. 26TH ST. NORTH
WICHITA, KS 67219
(316) 832-3126

MARC HENDERSON
COX COMMUNICATIONS
ENGINEERING DEPT.
901 GEORGE WASHINGTON BLVD.
WICHITA, KS 67211
(316) 260-7745

LEVEL 3 COMMUNICATIONS, LLC
266 N. MAIN, SUITE 100
WICHITA, KS 67202
(316) 858-6146

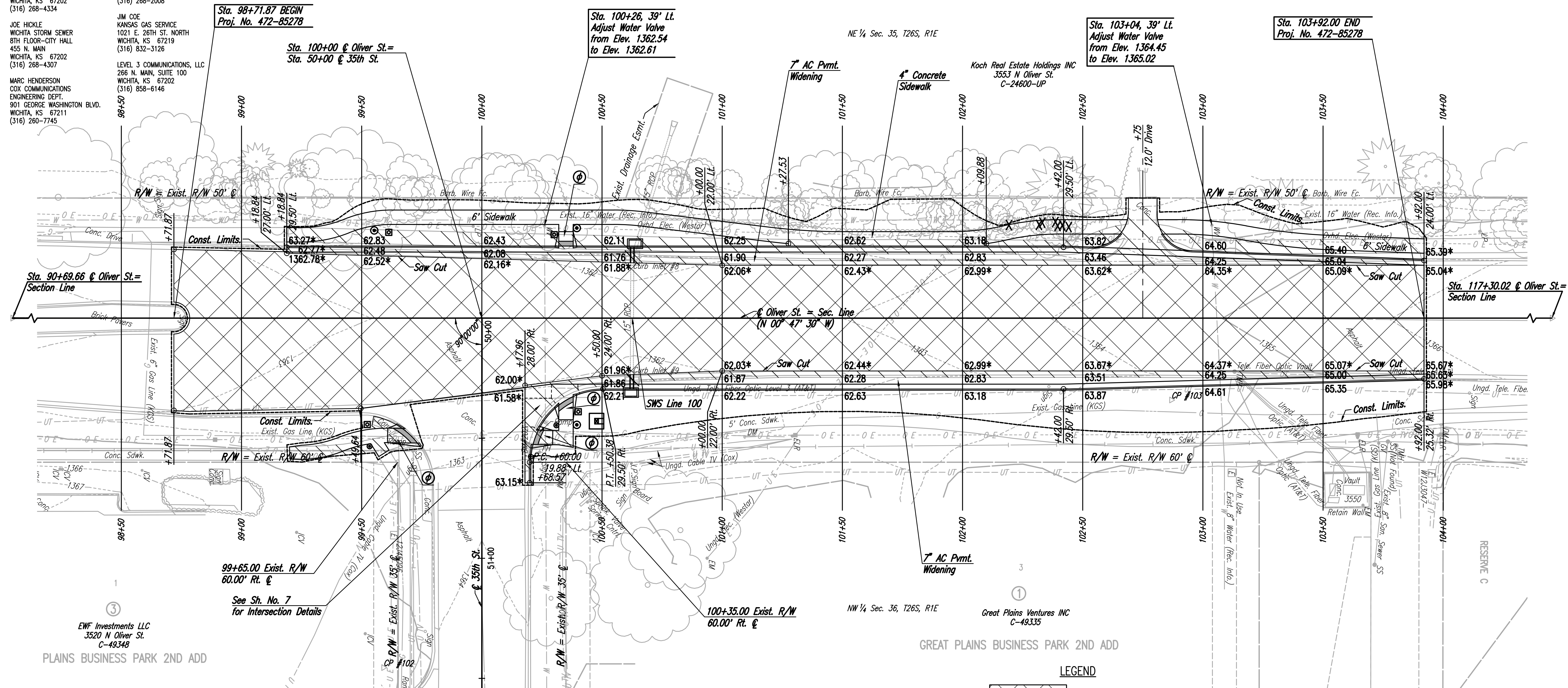
P.I. @ Sta. 90+69.66=
W 1/4 Cor. Sec. 36, T26S, R1E
N 1,707,255.072 E 1,664,889.649
1. See Reference Below

CP #101 47.34' Rt. @ Sta. 97+49.26
1/2" rebar
N 1,707,935.264 E 1,664,927.594
1. 13.60' S to back curb, north curb return, south entrance to quiktrip
2. 32.75' E to back curb, west of fuel pumps
3. 41.80' NE to south face light pole base

CP #102 145.52' Rt. @ Sta. 99+59.06
1/2" rebar
N 1,708,146.401 E 1,665,022.868
1. 23.23' NW to speed limit sign
2. 52.60' W to southeast corner electrical box
3. 9.60' SE to north face light pole base

CP #103 34.10' Rt. @ Sta. 102+86.88
1/2" rebar
N 1,708,472.651 E 1,664,906.922
1. 9.50' W to east curb line along oliver street
2. 51.04' SSW to speed limit sign
3. 78.45' NNW to south face, 2nd power pole north of 35th Street North

P.I. @ Sta. 117+30.02=
NW Cor. Sec. 36, T26S, R1E
N 1,709,915.224 E 1,664,852.885
1. See Reference Below



| REMOVAL OF EXISTING STRUCTURES | | |
|--------------------------------|------|----------------|
| STATION | SIDE | ITEM |
| 100+62 | Rt. | Inlet |
| 100+63 | Lt. | Inlet |
| 100+63 | Lt. | 8" Ex. 15" RCP |
| 50+59 (35th St.) | Lt. | Sign |

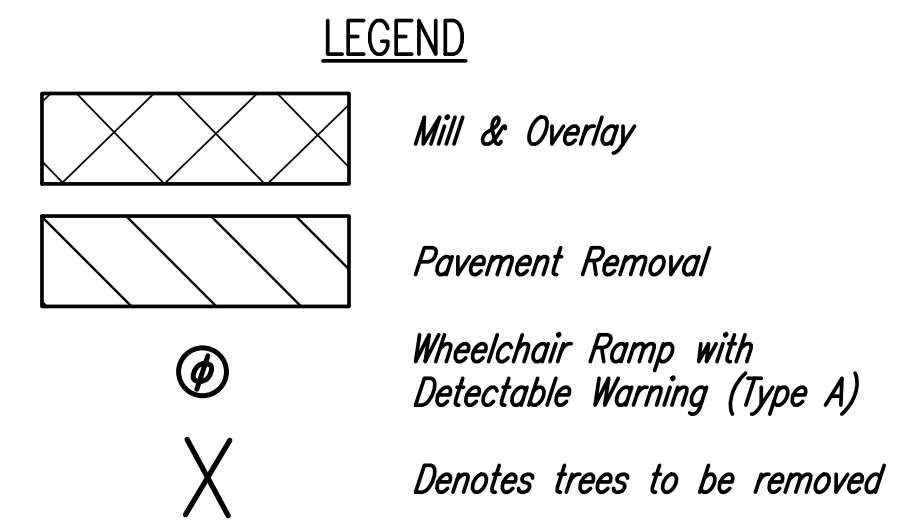
W 1/4 Cor. Sec. 36, T26S, R1E
N 1,707,255.072 E 1,664,889.649
1. Found 3/8" Rebar with MKEC Cap
2. To Chiseled cross on top of median curb
3. To Chiseled cross on top of median curb
4. To Chiseled cross on top of median curb
5. To Chiseled cross on top of median curb
6. In Median curb island South of K-96 Hwy

BM #202-Chiseled square cut on east curb return, north side of 35th St. N.
57.67' Rt. @ Sta. 100+20.31 Elev.=1363.37 (NAVD88)

Note: Elevations shown along Curb and Gutter are to High Edge and Top of Curb.

NW Cor. Sec. 36, T26S, R1E
N 1,709,915.224 E 1,664,852.885
1. Found 1/2" Rebar with PEC Cap
2. To Chiseled Cross on East corner of headwall
3. To Chiseled Cross on curb at Southeast corner of wheelchair ramp

97.91' NW
63.09' NE
BM #203-Chiseled square cut on east curb line along Oliver St., 5± south of telephone manhole, 75± south of centerline railroad crossing
29.04' Rt. @ Sta. 105+87.40 Elev.=1368.56 (NAVD88)



Sowed: 03-30-2017 9:37:01 AM by CP
 Plot Scale: 1" = 40'-04" 2017 9:41:18 AM by CP
 U:\Wichita-Civil\2015\15954\Drawings\15954-000-03C-PLAN

| | | | |
|--|----------|---------|--------------|
| No. | Revision | By | Date |
| 35TH STREET NORTH AND OLIVER STREET TRAFFIC SIGNALIZATION ROADWAY PLAN STA. 98+50 TO STA. 104+00 GARY JANZEN, P.E. - CITY ENGINEER CITY OF WICHITA PROJECT NO. 472-85278 | | | |
| PROFESSIONAL ENGINEERING CONSULTANTS, P.A. 303 SOUTH TOPEKA WICHITA, KS 67202 316-262-2691 www.pec1.com | | | |
| Designed by | SAC, BMM | Job No. | 31-15954-000 |
| Drawn by | BJS | Date | April 2017 |
| | | | Sht. 3 of 36 |