

P.I. Sta. 2+000.000 = SW Cor. Sec. 17, T27S, R2E.  
 1. Found 15 mm rebar in thimble  
 Center of Intersection, Rock Road and Central  
 2. N 514807.468, E 510779.351

P.I. Sta. 2+810.757 = S 1/4 Cor. Sec. 17, T27S, R2E.  
 1. Found rebar in thimble  
 2. N 514820.211, E 511590.008

STATE	PROJECT NO.	YEAR	SHEET NO	TOTAL SHEETS
KANSAS	87 N-0203-01	2003	3	48

**GENERAL NOTES**

ALL BORROW TO BE OBTAINED FROM AREAS PROVIDED BY THE CONTRACTOR SHALL BE APPROVED BY THE ENGINEER, BOTH AS TO SUITABILITY OF MATERIAL AND SITE LOCATION. LOCATIONS WHICH, IN THE OPINION OF THE ENGINEER, CONTAIN UNSUITABLE MATERIAL OR WILL LEAVE AN UNSIGHTLY APPEARANCE ON THE PROJECT WILL NOT BE APPROVED.

CHANNELS SHALL BE CUT AT BOX CULVERTS (UNLESS OTHERWISE NOTED) TO FLOW LINE ELEVATIONS AND TO A WIDTH OF 300 mm OUTSIDE OF EACH OUTSIDE WALL AND WITH 1:2 SLOPES PRIOR TO CONSTRUCTION OF THE CULVERT.

EMBANKMENT QUANTITIES FOR INITIAL CONSOLIDATION AND SETTLEMENT SHOWN IN THE EARTHWORK QUANTITIES ARE SUBSIDIARY TO OTHER EARTHWORK ITEMS. MATERIAL FOR THE EMBANKMENT IS INCLUDED IN THE EXCAVATION QUANTITIES.

EXCAVATION REQUIRED FOR PLACING SELECT SOIL IS INCLUDED IN THE COMMON EXCAVATION QUANTITIES.

EXCAVATION SHOWN TO BE WASTED SHALL BE WASTED ON SITES PROVIDED BY THE CONTRACTOR. THESE SITES SHALL BE APPROVED BY THE ENGINEER AS TO SUITABILITY, APPEARANCE, AND SITE LOCATION. LOCATIONS THAT, IN THE OPINION OF THE ENGINEER, WILL LEAVE AN UNSIGHTLY APPEARANCE WILL NOT BE APPROVED.

ALL TREES, HEDGE ROWS, SHELTERBELTS, AND WOODY SHRUBS NOT SHOWN TO BE REMOVED AND LOCATED BETWEEN THE CONSTRUCTION LIMITS AND THE RIGHT OF WAY LINE OR EASEMENT LINE SHALL BE SPARED UNLESS DIRECTED BY THE ENGINEER TO BE REMOVED. ALL TREES WITHIN THE APPROPRIATE CLEAR ZONE SHALL BE REMOVED.

CONTRACTOR SHALL CALL 1-800-DIG-SAFE PRIOR TO ANY PROJECT EXCAVATION.

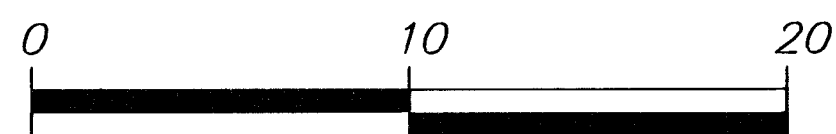
ALL UTILITIES INDICATED ON THE DRAWINGS ARE ACCORDING TO THE BEST INFORMATION AVAILABLE TO THE ENGINEER; HOWEVER, ALL UTILITIES ACTUALLY EXISTING MAY NOT BE SHOWN. UTILITIES DAMAGED THROUGH THE FAILURE OF THE CONTRACTOR TO OBTAIN THE LOCATION OF THE SAME SHALL BE REPAIRED AND/OR REPLACED BY THE UTILITIES OWNER AT THE CONTRACTOR'S EXPENSE.

THE EXISTING 450 mm RCP EAST OF THE PROPOSED MANHOLE AT STA. 2+189.207, 7.936 m RT. WILL BE REPLACED BY OTHERS AT SOME POINT DURING CONSTRUCTION WITH A 750 mm RCP. THE CONTRACTOR SHALL COORDINATE THE INSTALLATION OF THIS MANHOLE AND ALL OTHER WORK WITH THE STORM SEWER IMPROVEMENT PROJECT. THE ELEVATION AND ALIGNMENT OF THE PROPOSED STORM SEWER SHALL BE CONFIRMED PRIOR TO CONSTRUCTION.

**Legend**

- Pavement, Median, Sidewalk and Driveway Removal
- Existing tree to be removed

SCALE = 1:200



PLAN: Lat. & Long. (meters)

PROFILE: Horiz. same as above,

Vert. SCALE: 1:20

**UTILITY OWNERS**

- TV - Cox Communications (316)262-4270
- G - Kansas Gas Service (316) 832-3122
- E - KGE (316) 261-6552
- SS - City of Wichita Water & Sewer Dept. (316) 268-4555
- SWS - City of Wichita Water & Sewer Dept. (316) 268-4555
- T - Southwestern Bell Telephone Co. (316) 268-2245
- W - City of Wichita Water & Sewer Dept. (316) 268-4555

AULL'S FIRST ADDITION  
 Lot 2, Block 1  
 SW 1/4, Sec. 17, T27S, R2E

Sta. 2+158.0, 12022 m Lt. Const.  
 Manhole, Precast (1 220)  
 Connect exist. 450 mm  
 Storm Sewer (W)  
 Install 16.6 m x 450 mm  
 Storm Sewer, (RCP) (SE)  
 Into new RCB wall  
 Remove exist. 14.4 m x 450 mm  
 Storm Sewer (E)  
 See Sh. No. 14

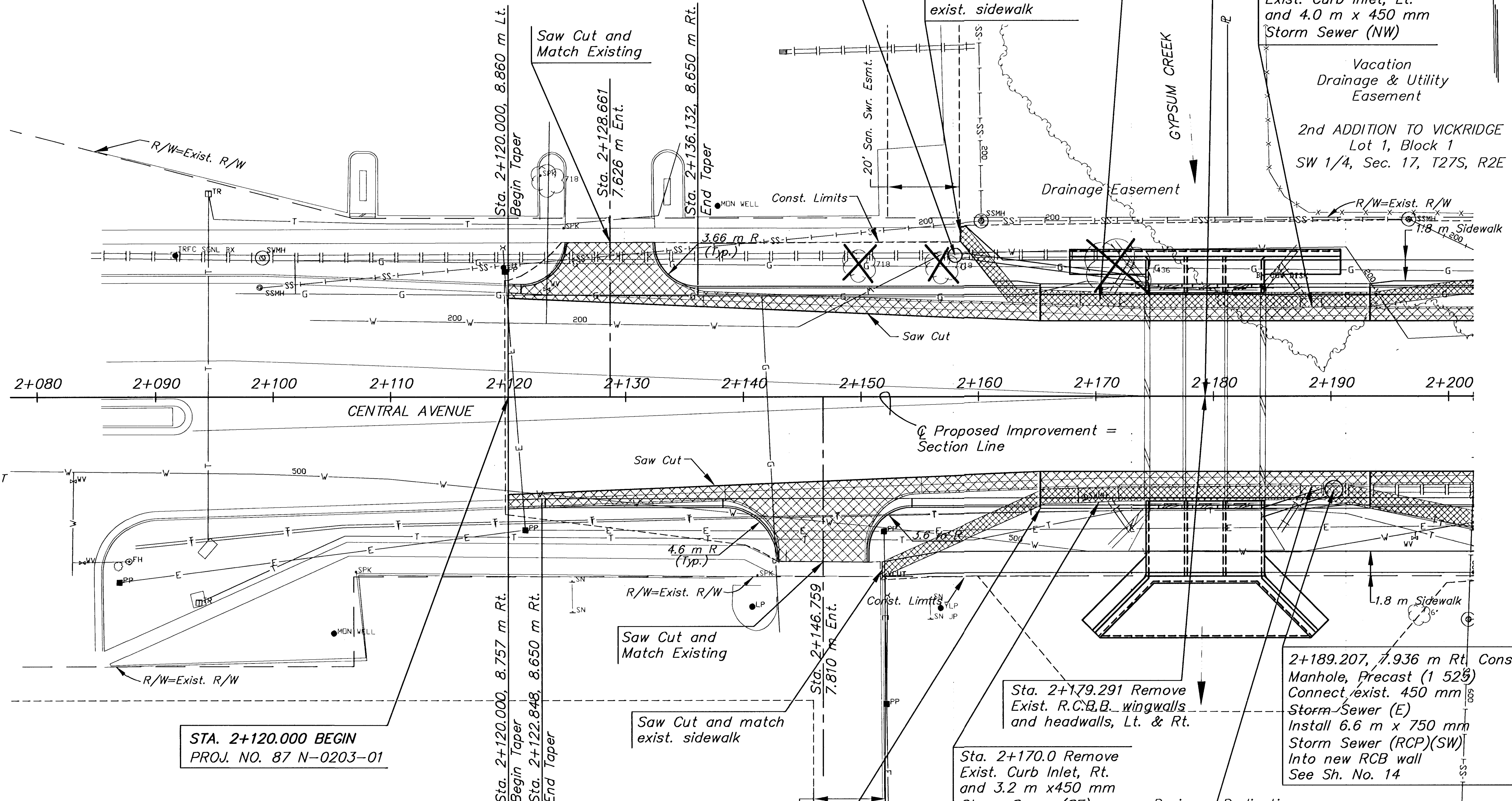
Sta. 2+170.0 Remove  
 Exist. Curb Inlet, Lt.  
 and 3.6 m x 450 mm  
 Storm Sewer (NE)

Sta. 2+179.291 Extend  
 3-3.124 x 3.048 m R.C.B.B.  
 2.495 m Lt. and 5.785 m Rt.  
 With Concrete Apron, Rt.  
 See Sh. No. 16-25

Sta. 2+188.4 Remove  
 Exist. Curb Inlet, Lt.  
 and 4.0 m x 450 mm  
 Storm Sewer (NW)

Vacation  
 Drainage & Utility  
 Easement

2nd ADDITION TO VICKRIDGE  
 Lot 1, Block 1  
 SW 1/4, Sec. 17, T27S, R2E



STA. 2+120.000 BEGIN  
 PROJ. NO. 87 N-0203-01

DEAN - RUPPERT 1ST ADDITION  
 Lot 2, Block 1  
 NW 1/4, Sec. 20, T27S, R2E

Sta. 2+165.261 to  
 2+193.321 Const.  
 Conc. Pavement with  
 Traffic Rail, Lt. and Rt.  
 See Sh. No. 7-13

Sta. 2+188.4 Remove  
 Exist. Curb Inlet, Rt.  
 and 4.2 m x 450 mm  
 Storm Sewer (SW)

2+189.207, 7.936 m Rt. Const.  
 Manhole, Precast (1 525)  
 Connect exist. 450 mm  
 Storm Sewer (E)  
 Install 6.6 m x 750 mm  
 Storm Sewer (RCP)(SW)  
 Into new RCB wall  
 See Sh. No. 14

BM RR Spike in NE Face of PP on S. side of  
 Central and 2nd PP E. of Rock Road  
 STA. 2+070.752, 17.202 m South.  
 Elev. = 411.470

BM City of Wichita BM Disk set in NE Cor. of RCBB  
 on Headwall at Tara and Gypsum Creek  
 STA. 2+184.199, 9.323 m North.  
 Elev. = 409.685

BM RR Spike in N. Face of 1st PP E. of  
 North Tara on S. side of Central  
 STA. 2+295.930, 10.310 m South.  
 Elev. = 412.241

NO.	DATE	REVISIONS	BY	APP'D
2				
1				

KANSAS DEPARTMENT OF TRANSPORTATION

**CENTRAL BRIDGE AT TARA**  
 STA. 2+100 TO STA. 2+200

PROJ. NO. 87 N-0203-01

**MKEC ENGINEERING CONSULTANTS, INC.**  
 WICHITA, KANSAS

DESIGNED BY: \_\_\_\_\_ CHECKED BY: \_\_\_\_\_  
 DRAWN BY: \_\_\_\_\_ DATE: JAN. 2003 SHEET 3 OF 48

G:\CIVIL\0079\PAVE\0079\SELDWG 01/06/03 04:57:09 PM CST