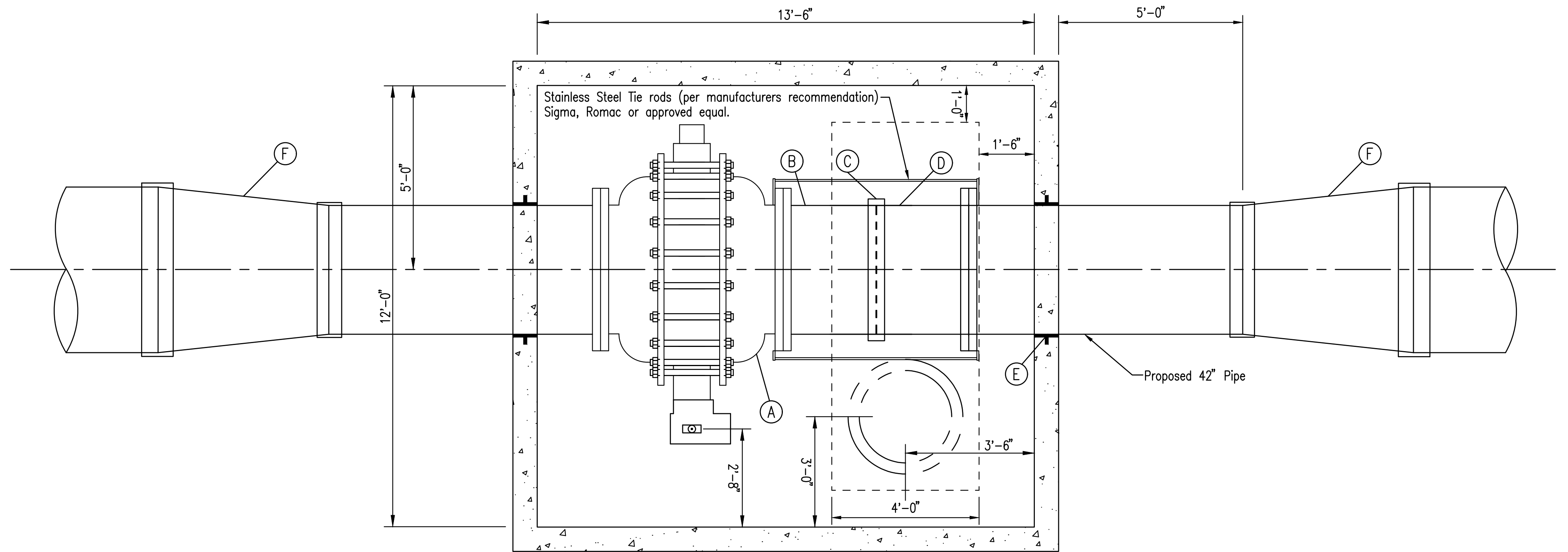


TOP



PLAN

A	42" Flanged Ball Valve
B	2.5'- 42" Spool (PE x FL)
C	42" Coupling w/ 1" Gap (Stainless Steel Style 38 by Dresser, armor seal by Romac, or approved equal)
D	2.5'- 42" Spool (PE x FL)
E	42" Wall Sleeve w/ Link-Seal
F	Reducer

* VALVE BOXES SHALL BE FURNISHED WITH TAMPER PROOF LOCKING LIDS. McGARD INTIMIDATOR CURB-LOCK OR APPROVED EQUAL. TWO SOCKET WRENCH KEYS SHALL BE PROVIDED FOR EACH SIZE AND TYPE OF LOCKING LID. TYPICAL ALL VAULTS.

** IF PLANS CALL FOR AN ELECTRIC OPERATOR, AN ELECTRIC ACTUATOR SHALL BE USED AND THE VALVE STEM EXTENSION AND VALVE BOX SHALL BE EXCLUDED.

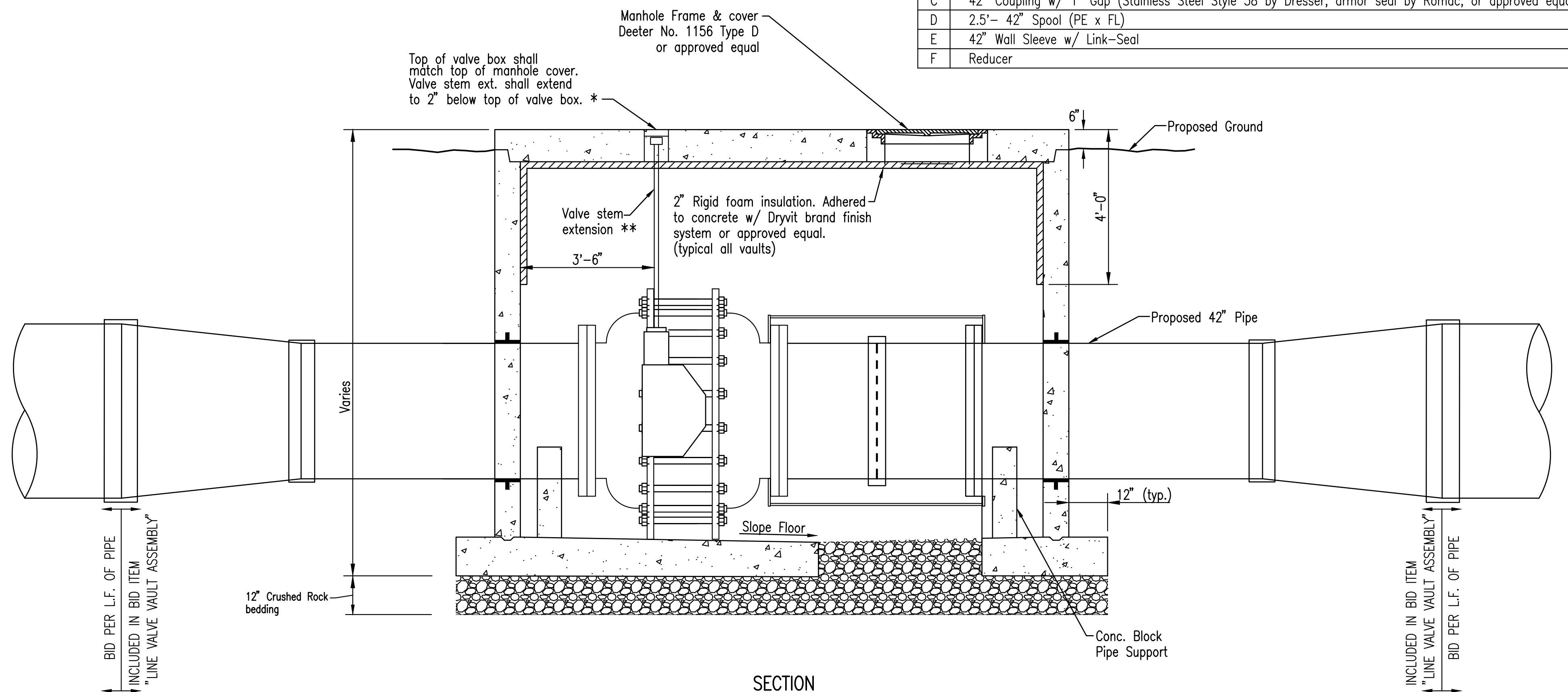
NOTE: PROVIDE A "CONFINED ENTRY SPACE WARNING" SIGN, CHAMPION AMERICAN MODEL 73415HH OR APPROVED EQUAL, FOR VAULT AT LOCATION AS APPROVED BY THE ENGINEER. THE "CONFINED ENTRY SPACE WARNING" SIGN SHALL BE FASTENED TO THE TOP OF ALL VAULTS. IF NECESSARY FOR LANDSCAPING OR SITE CONSIDERATIONS, THE SIGN MAY BE FASTENED TO THE VAULT LID IF IT DOES NOT IMPEDE ACCESS.

THE STRUCTURE JOINTS SHALL BE SEALED IN ACCORDANCE WITH CITY OF WICHITA STANDARD SPECIFICATIONS FOR PRECAST MANHOLES. NO COATINGS ARE REQUIRED.

THE CONTRACTOR SHALL UTILIZE RESTRAINED JOINT PIPE AND TIE RODS TO RESTRAIN ALL PIPING AT THE VALVE LOCATIONS.

SEE SHEET NO. SA302 FOR STRUCTURAL DETAILS.

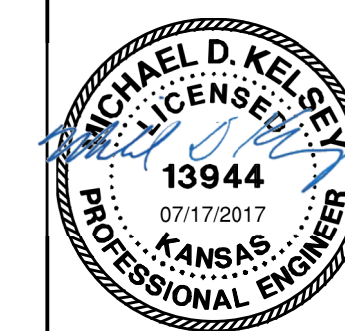
INSTALL REDUCERS ONLY WHERE SHOWN ON PLANS.



SECTION

LINE VALVE VAULT DETAIL

SCALE 1" = 2'



No.	Revision	By	Date
WASTEWATER PLANT 2 INFLUENT FORCE MAIN - PHASE 2 LINE VALVE VAULT DETAIL GARY JANZEN, P.E. - CITY ENGINEER CITY OF WICHITA PROJECT NO. 468-85202			
PROFESSIONAL ENGINEERING CONSULTANTS, P.A. 303 SOUTH TOPEKA WICHITA, KS 67202 316-262-2691 www.pec1.com			
Designed by	MDK, TBK	Job No.	35-15554-1-0042
Drawn by	CSL, KTD	Date	NOVEMBER 2016