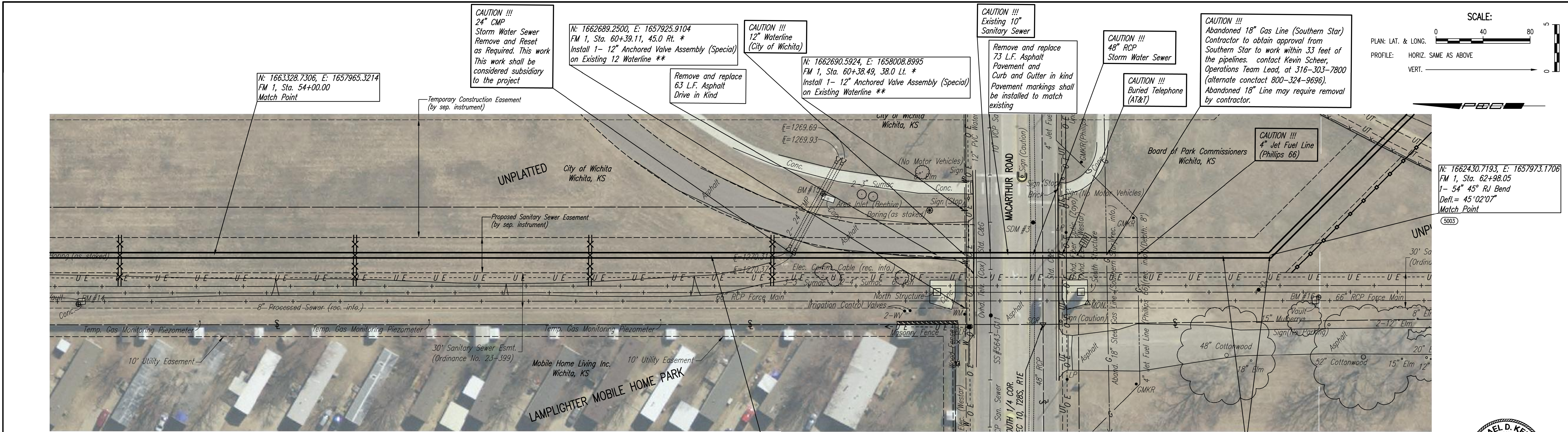


PLAN	CHECKED	DATE
	CHECKED	
BY		

PROFILE	CHECKED	DATE
	CHECKED	
BY		

Saved: 07-14-2017 4:15:27 PM by: KURIS,DEKAT
 Plot Scale: 1" = 10'-0" (Horizontal) 1" = 4'-0" (Vertical)
 U:\Projects\Civil\2015\15554\001\Drawings\Phase 2\15554-001-CA302-FORCE MAIN LINE NO. 1



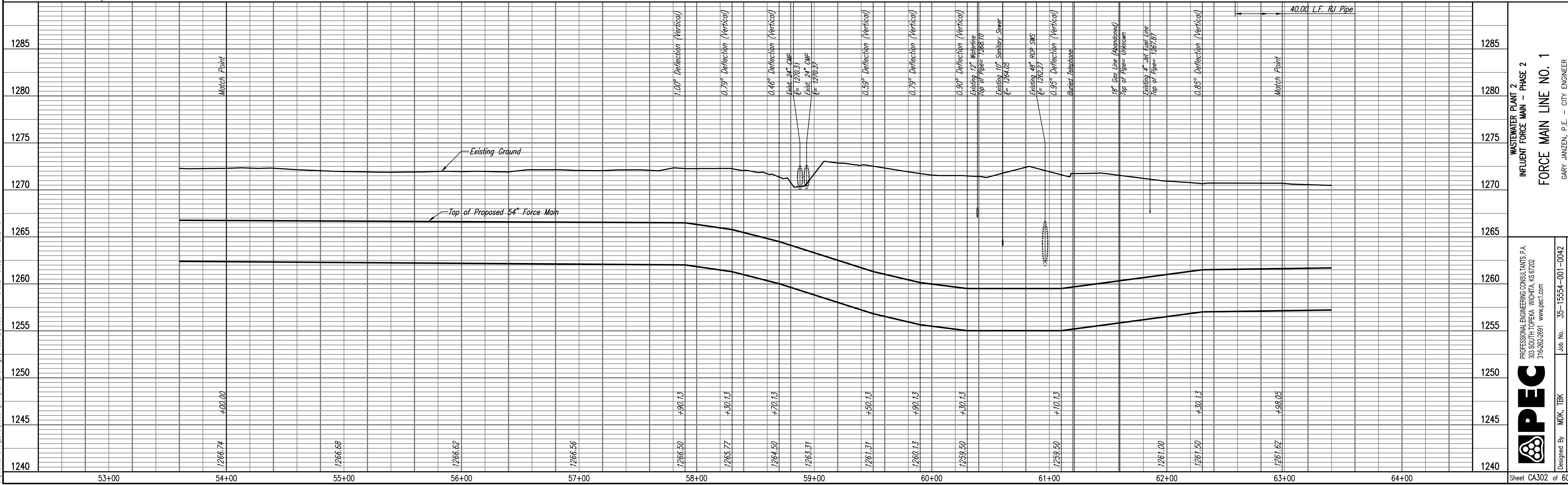
*** PRIOR TO BEGINNING CONSTRUCTION, THE CONTRACTOR SHALL EXCAVATE THE EXISTING 12" WATERLINE AT FORCE MAIN STATION 60+39.09, 45.0' RT. AND FORCE MAIN STATION 60+38.49, 38.0' LT. TO VERIFY PIPE SIZE, TYPE, FITTINGS, AND HORIZONTAL AND VERTICAL LOCATION. THE CONTRACTOR SHALL REPORT HIS FINDINGS TO THE ENGINEER SO THAT ANY NECESSARY PLAN MODIFICATIONS CAN BE MADE. ANY ADDITIONAL LABOR OR MATERIALS NECESSARY TO COMPLETE THE CONNECTION SHALL BE CONSIDERED SUBSIDIARY TO THE PROJECT.**

**** INSTALL 12" ANCHORED VALVE ASSEMBLIES PRIOR TO INSTALLATION OF FORCE MAIN. CONTRACTOR SHALL MAINTAIN WATER PRESSURE ON EXISTING PIPE EAST AND WEST OF CONSTRUCTION LIMITS.**

DESIGNATES LOCATION OF FORCE MAIN WARNING SIGN. (1 required this sheet) SEE DETAIL, SHEET NO. CA323

Legend:
 - Silt Fence Barrier
 - Ditch Checks
 - Proposed Inlet Protection
 - SEE SHEET NO. CA103 FOR FORCE MAIN COORDINATES (TYP.)

FORCE MAIN LINE NO. 1



WASTEWATER PLANT 2
INFLUENT FORCE MAIN - PHASE 2
FORCE MAIN LINE NO. 1

Designed By: MDK, TBK
 Drawn By: CSL, KTD

Job No.: 35-15554-001-0042
 Date: NOVEMBER 2016

PROFESSIONAL ENGINEERING CONSULTANTS P.A.
 303 SOUTH TOPEKA WICHITA, KS 67202
 316-262-2691 www.pec1.com

GARY JANZEN, P.E. - CITY ENGINEER
 CITY OF WICHITA PROJECT NO. 468-85202

Sheet CA302 of 60