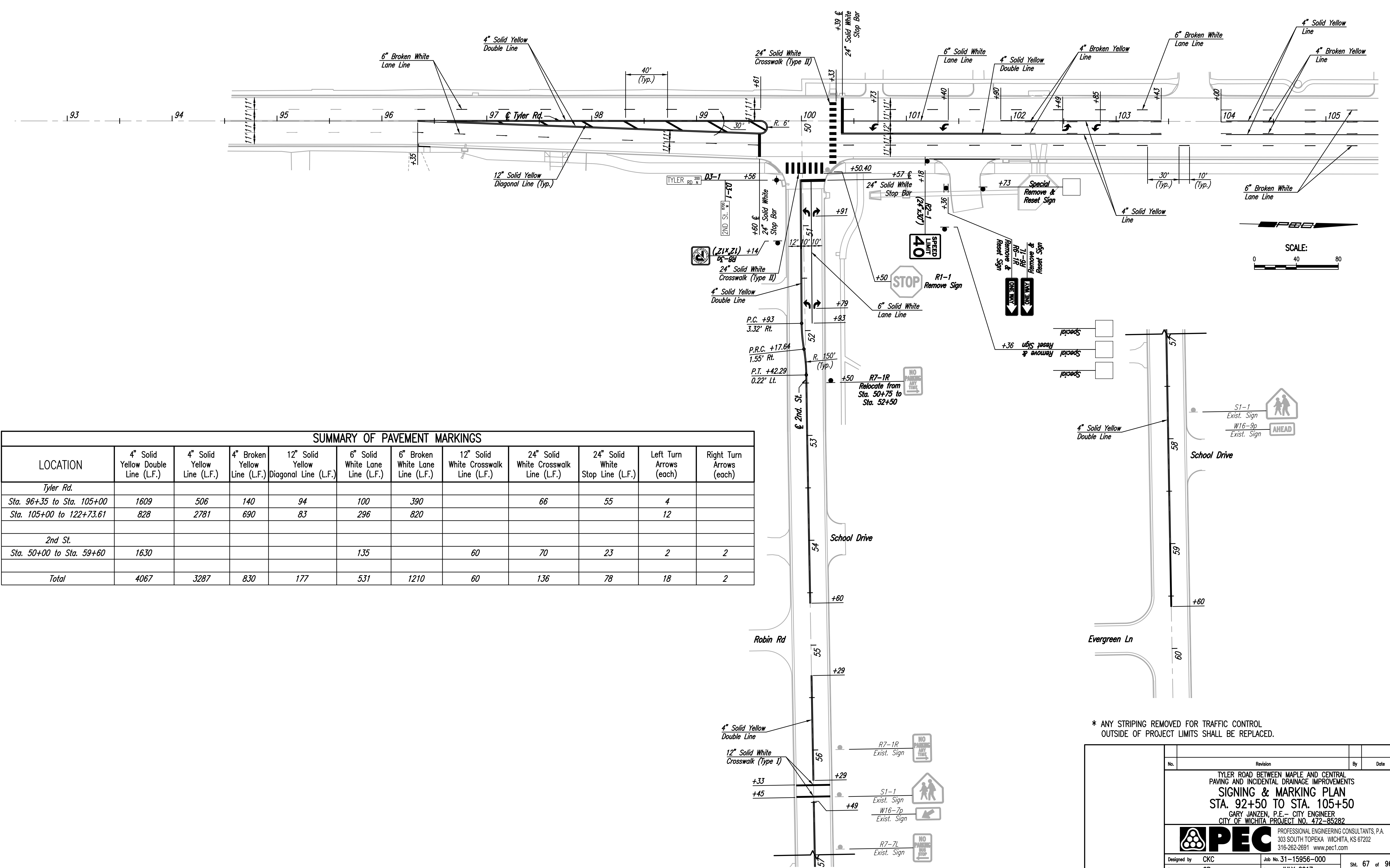


Served: 07-20-2017 4:18:19 PM by CP
 Plot Scale: 1" = 40'-0" 07-25-2017 10:42:57 AM by CP
 U:\Wichita-Civil\2015\15956\Drawings\15956-000-67C-SIGNING & MARKING PLAN



SUMMARY OF PAVEMENT MARKINGS

LOCATION	4" Solid Yellow Double Line (L.F.)	4" Solid Yellow Line (L.F.)	4" Broken Yellow Line (L.F.)	12" Solid Yellow Diagonal Line (L.F.)	6" Solid White Lane Line (L.F.)	6" Broken White Lane Line (L.F.)	12" Solid White Crosswalk Line (L.F.)	24" Solid White Crosswalk Line (L.F.)	24" Solid White Stop Line (L.F.)	Left Turn Arrows (each)	Right Turn Arrows (each)
<i>Tyler Rd.</i>											
Sta. 96+35 to Sta. 105+00	1609	506	140	94	100	390		66	55	4	
Sta. 105+00 to Sta. 122+73.61	828	2781	690	83	296	820				12	
<i>2nd St.</i>											
Sta. 50+00 to Sta. 59+60	1630				135		60	70	23	2	2
Total	4067	3287	830	177	531	1210	60	136	78	18	2

* ANY STRIPING REMOVED FOR TRAFFIC CONTROL OUTSIDE OF PROJECT LIMITS SHALL BE REPLACED.

No.	Revision	By	Date
TYLER ROAD BETWEEN MAPLE AND CENTRAL PAVING AND INCIDENTAL DRAINAGE IMPROVEMENTS SIGNING & MARKING PLAN STA. 92+50 TO STA. 105+50 GARY JANZEN, P.E. - CITY ENGINEER CITY OF WICHITA PROJECT NO. 472-85282			
		PROFESSIONAL ENGINEERING CONSULTANTS, P.A. 303 SOUTH TOPEKA WICHITA, KS 67202 316-262-2691 www.pec1.com	
Designed by	CKC	Job No.	31-15956-000
Drawn by	CP	Date	JULY 2017
			Sht. 67 of 96