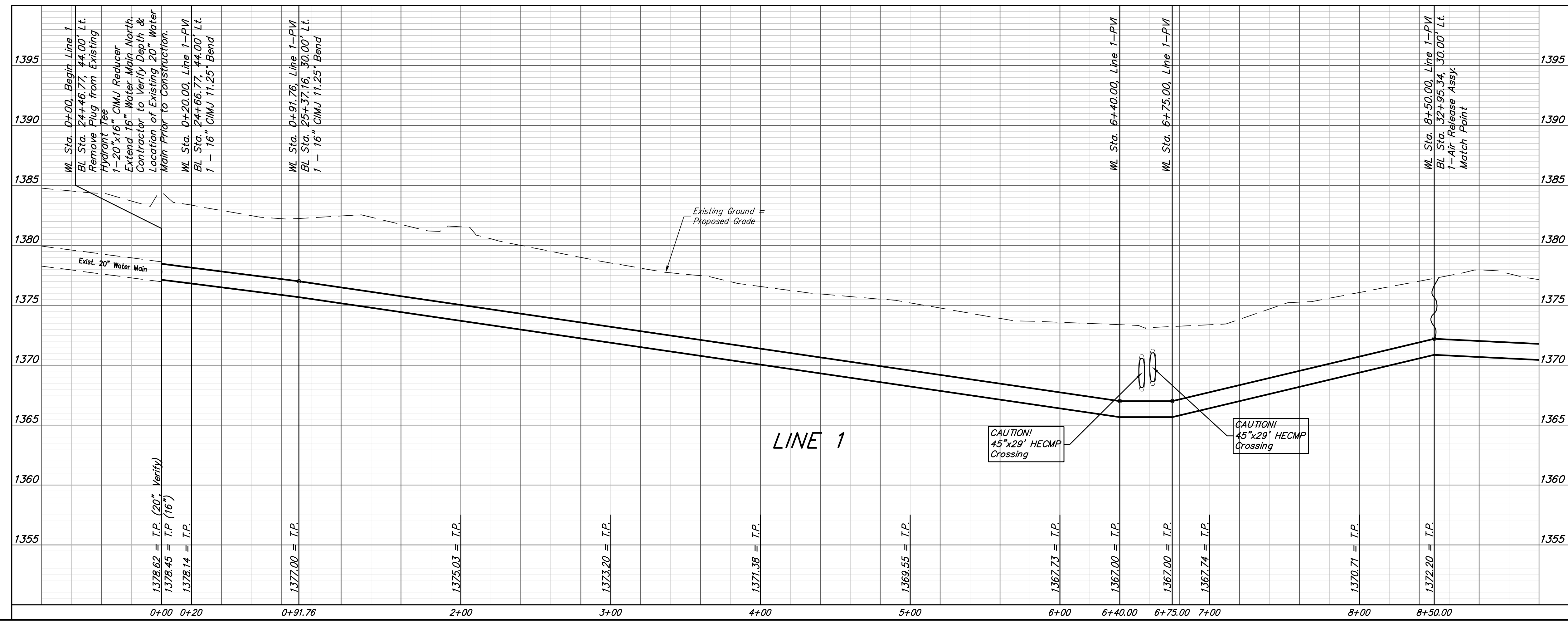
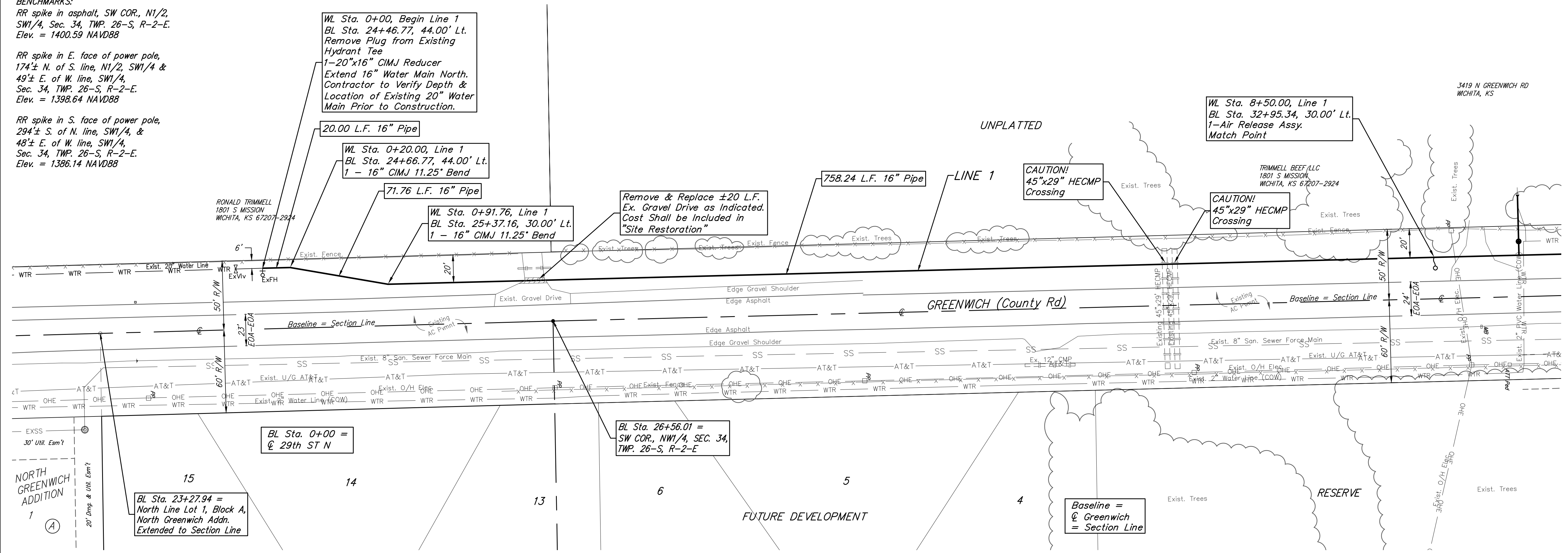
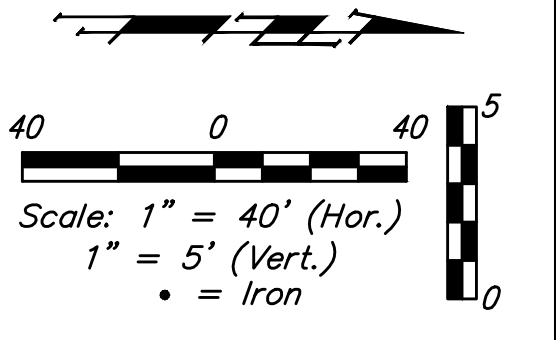


BENCHMARKS:
 RR spike in asphalt, SW COR., N1/2, SW1/4, Sec. 34, TWP. 26-S, R-2-E. Elev. = 1400.59 NAVD88
 RR spike in E. face of power pole, 174± N. of S. line, N1/2, SW1/4, & 49± E. of W. line, SW1/4, Sec. 34, TWP. 26-S, R-2-E. Elev. = 1398.64 NAVD88
 RR spike in S. face of power pole, 294± S. of N. line, SW1/4, & 48± E. of W. line, SW1/4, Sec. 34, TWP. 26-S, R-2-E. Elev. = 1386.14 NAVD88



Baughman Brookfield Addition - Phase I
LINE 1
 Water Distribution System

Baughman Company, P.A. 315 Ellis St. Wichita, KS 67211 P 316-262-7271 F 316-262-0149
 ENGINEERING | SURVEYING | PLANNING | LANDSCAPE ARCHITECTURE

PROJECT NUMBER: 448-90803
 DESIGN: DMV
 DRAWN: JAK
 APPROVED: [Signature]
 DATE: 9/05/17

REVISIONS:

SCALE: Noted
 SHEET: 4 OF 21

1:\Projects\Brookfield Addition - 1604P190\Engineering\WTR MAIN_1608-539\WTRMAIN PLANS.dwg