

BENCHMARKS:
 RR spike in asphalt, SW COR., N1/2, SW1/4, Sec. 34, TWP. 26-S, R-2-E. Elev. = 1400.59 NAVD88

RR spike in E. face of power pole, 174± N. of S. line, N1/2, SW1/4 & 49± E. of W. line, SW1/4, Sec. 34, TWP. 26-S, R-2-E. Elev. = 1398.64 NAVD88

RR spike in S. face of power pole, 294± S. of N. line, SW1/4, & 48± E. of W. line, SW1/4, Sec. 34, TWP. 26-S, R-2-E. Elev. = 1386.14 NAVD88

FIRE HYDRANTS REQUIRED				
STATION	BURY LINE ELEVATION	TOP OF PIPE ELEVATION	FIRE HYDRANT BURY REQUIRED*	VALVE STEM EXT. REQUIRED (ft)*
26+50.27	1372.00	1366.96	6.0	-

WL Sta. 26+50.27, End Line 2
 BL Sta. 27+19.26, 50.00' Rt.
 1-Fire Hydrant Assembly (L = 5')
 1 - 16" CIMJ Plug (E)
 Bury Line Elev. = 1372.00
 Valve Box Elev. = 1372.10

WL Sta. 26+30.27, Line 2
 BL Sta. 26+99.26, 50.00' Rt.
 1 - 16" Anch. Valve Assy. (Special) (MJ Butterfly Valve)
 Valve Box Elev. = 1372.00

WL Sta. 19+00.27, Line 2
 BL Sta. 19+69.26, 50.00' Rt.
 Match Point

31.89 L.F. 16" Pipe

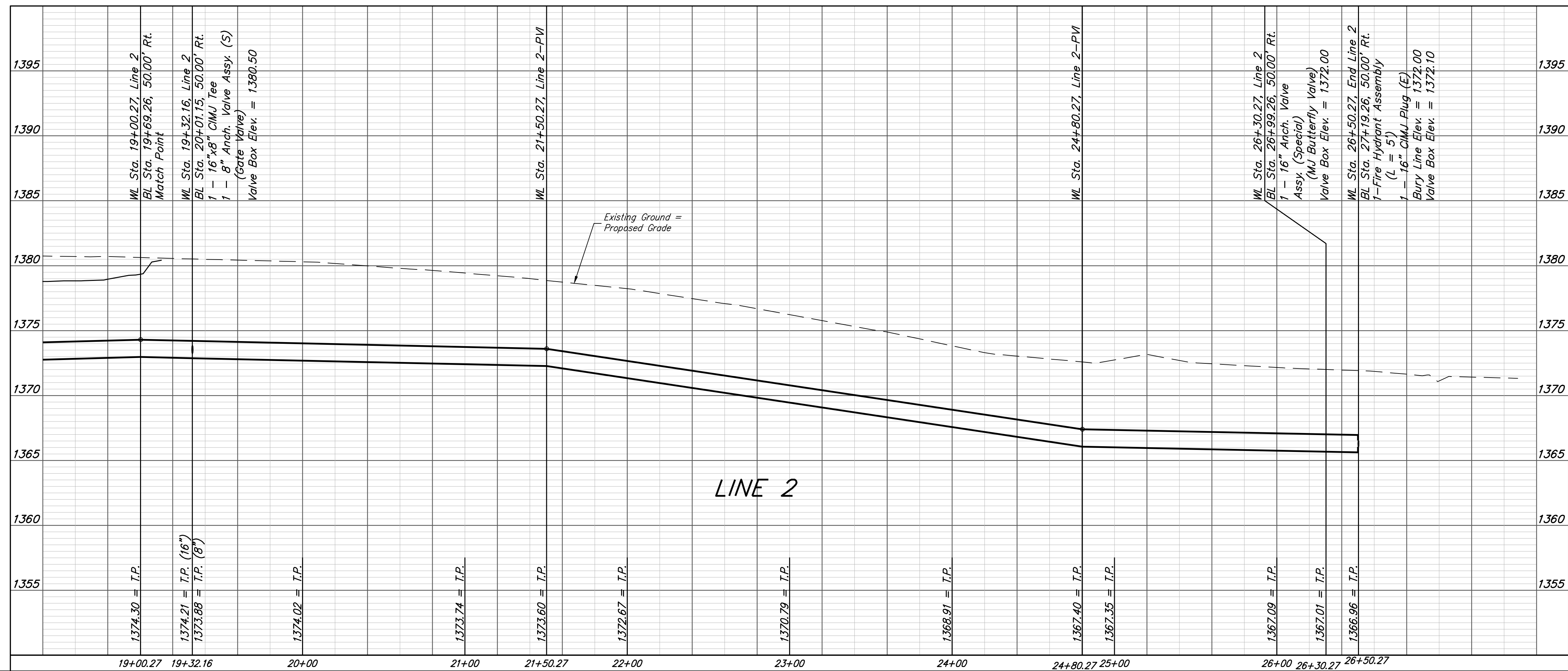
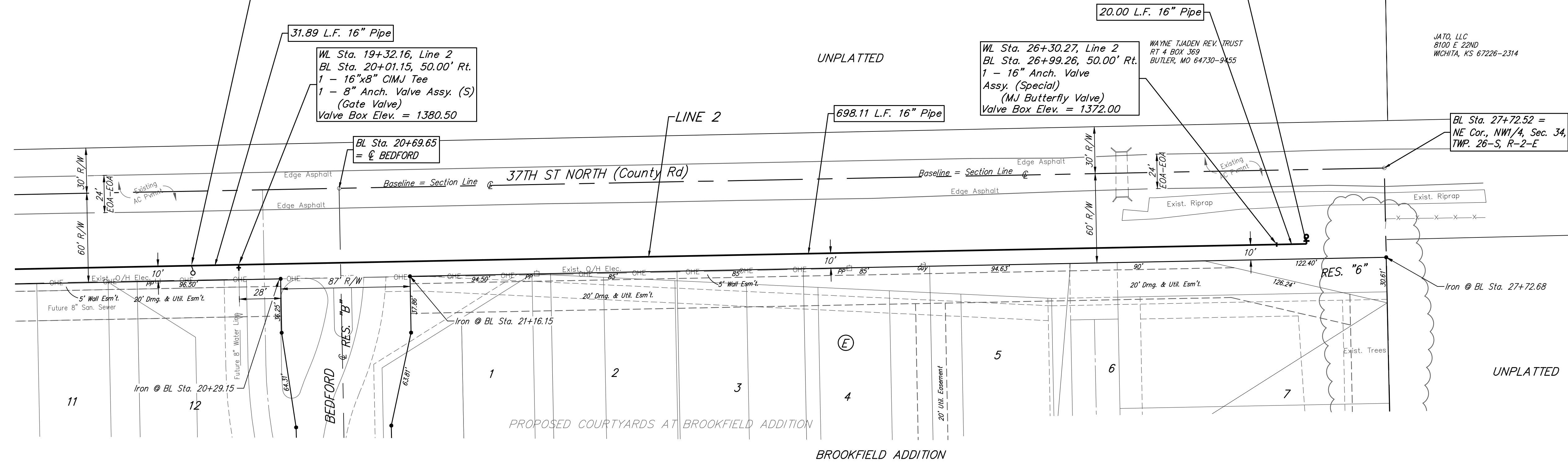
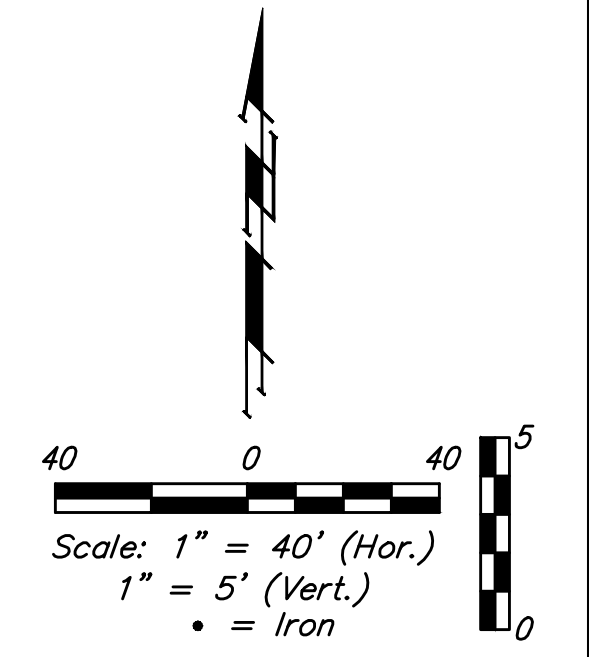
WL Sta. 19+32.16, Line 2
 BL Sta. 20+01.15, 50.00' Rt.
 1 - 16"x8" CIMJ Tee
 1 - 8" Anch. Valve Assy. (S) (Gate Valve)
 Valve Box Elev. = 1380.50

BL Sta. 20+69.65 = & BEDFORD

20.00 L.F. 16" Pipe

WAYNE TJADEN REV. TRUST
 RT 4 BOX 369
 BUTLER, MO 64730-9455

JATO, LLC
 8100 E 22ND
 WICHITA, KS 67226-2314



Baughman Brookfield Addition - Phase I
LINE 2
 Water Distribution System

Baughman Company, P.A. 315 Ellis St. Wichita, KS 67211 P 316-262-7271 F 316-262-0149
 ENGINEERING | SURVEYING | PLANNING | LANDSCAPE ARCHITECTURE

PROJECT NUMBER 448-90803	DESIGN DMV	DRAWN JAK
REVISIONS:	APPROVED	DATE 9/05/17
	SCALE Noted	SHEET 9 OF 21

I:\Projects\Brookfield Addition_1604P190\Engineering\WTR MAIN_1608-539\WTRMAIN PLANS.dwg