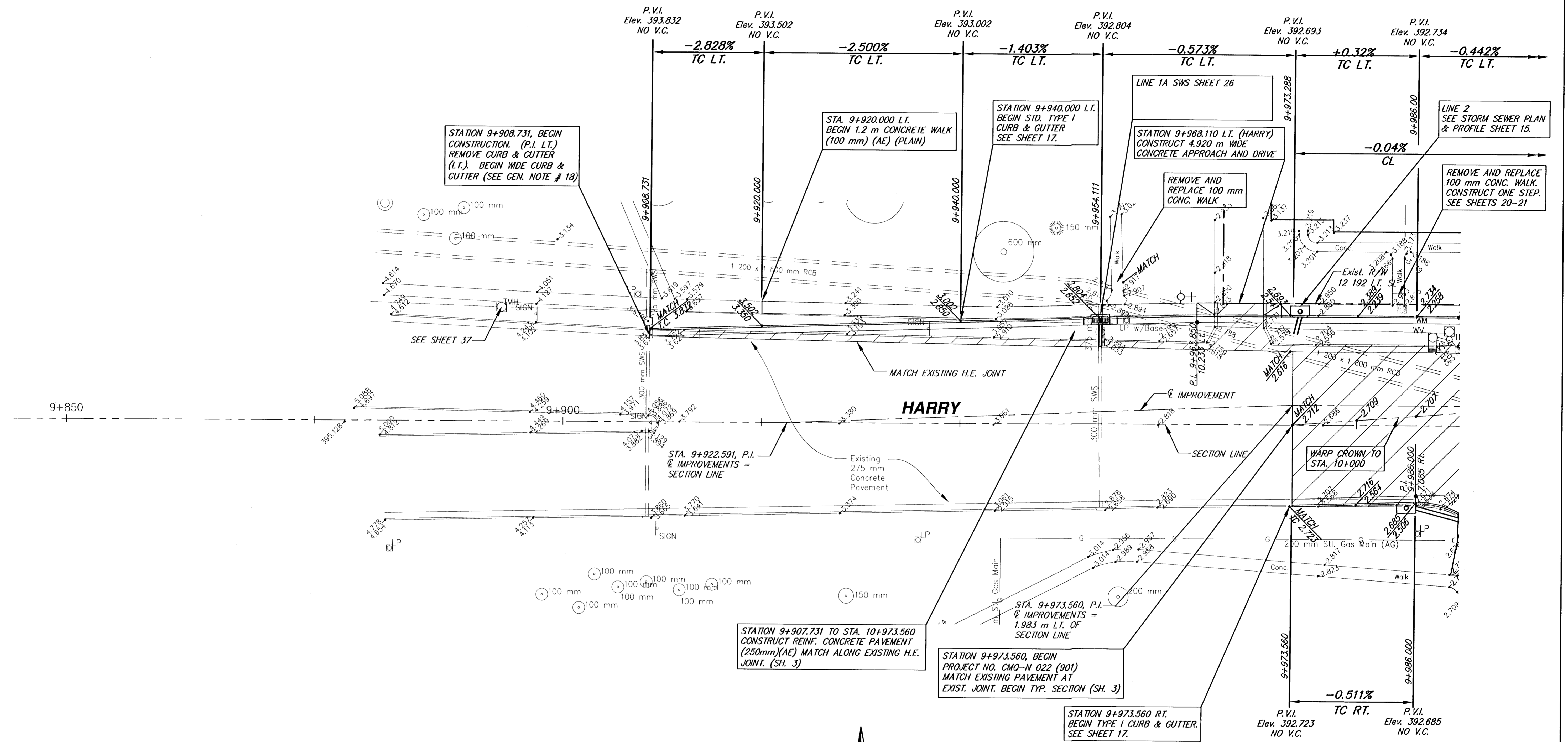


FHWA REGION NO.	STATE	PROJECT NUMBER	FISCAL YEAR	SHEET NUMBER	TOTAL SHEETS
7	KANSAS	87 N-0229-01	2004	6	62



STATION 9+908.731, BEGIN CONSTRUCTION. (P.I. LT.) REMOVE CURB & GUTTER (LT.). BEGIN WIDE CURB & GUTTER (SEE GEN. NOTE # 18)

STA. 9+920.000 LT. BEGIN 1.2 m CONCRETE WALK (100 mm) (AE) (PLAIN)

STATION 9+940.000 LT. BEGIN STD. TYPE I CURB & GUTTER SEE SHEET 17.

LINE 1A SWS SHEET 26
STATION 9+968.110 LT. (HARRY) CONSTRUCT 4.920 m WIDE CONCRETE APPROACH AND DRIVE

REMOVE AND REPLACE 100 mm CONC. WALK

LINE 2 SEE STORM SEWER PLAN & PROFILE SHEET 15.



REMOVE AND REPLACE 100 mm CONC. WALK. CONSTRUCT ONE STEP. SEE SHEETS 20-21

STATION 9+907.731 TO STA. 10+973.560 CONSTRUCT REINF. CONCRETE PAVEMENT (250mm)(AE) MATCH ALONG EXISTING H.E. JOINT. (SH. 3)

STATION 9+973.560, BEGIN PROJECT NO. CMQ-N 022 (901) MATCH EXISTING PAVEMENT AT EXIST. JOINT. BEGIN TYP. SECTION (SH. 3)

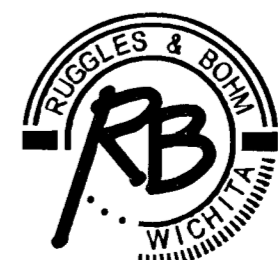
STATION 9+973.560 RT. BEGIN TYPE I CURB & GUTTER. SEE SHEET 17.

LEGEND

-  Pavement Removal
-  Tree Removal



SCALE
5 0 5 10
PLAN: Lat. & Long. (meters)

HARRY STATION 9+908.731 TO STATION 9+986.000 WICHITA, KANSAS	
 Ruggles & Bohm, P.A. Engineering, Surveying, Land Planning 924 North Main Wichita, Kansas 67203 www.rbkansas.com (316) 264-8008 (316) 264-4621 fax E-mail: info@rbkansas.com	
DESIGN TCR	REVISION RA/EJB
DRAWN	SHEET
REVIEW	6
UTILITY	OF
DATE Feb. 25, 2004	62
DRAWING FILE BASE-METRIC {P01}	PROJECT NUMBER 472-83686