

PLOTED: Wednesday, November 01, 2017 @ 03:32PM

J:\PROJECTS\2017\1701010567_COW_STRYKER_170567_CAD\SHOTS\05_CIVIL_PACKAGE RELEASE 01 - TURF PROCUREMENT\170567_01_1000.DWG

TURF PROCUREMENT STRYKER SPORTS

PROJECT NO. 472-85380

THE CITY OF WICHITA, KANSAS
GARY JANZEN, P.E. - CITY ENGINEER

OCA NO. 796031

GENERAL NOTES

- THE CONTRACTOR SHALL COMPLY WITH ALL APPLICABLE SAFETY REGULATIONS. ALL CONSTRUCTION SHALL BE COMPLETED FOLLOWING CURRENT CITY STANDARD SPECIFICATIONS AND SPECIAL PROVISIONS.
- CONTRACTOR WILL BE REQUIRED TO PROVIDE NOTICE TO UTILITY COMPANIES A MINIMUM OF SEVENTY-TWO (72) HOURS PRIOR TO ANY EXCAVATION, AS FOLLOWS:

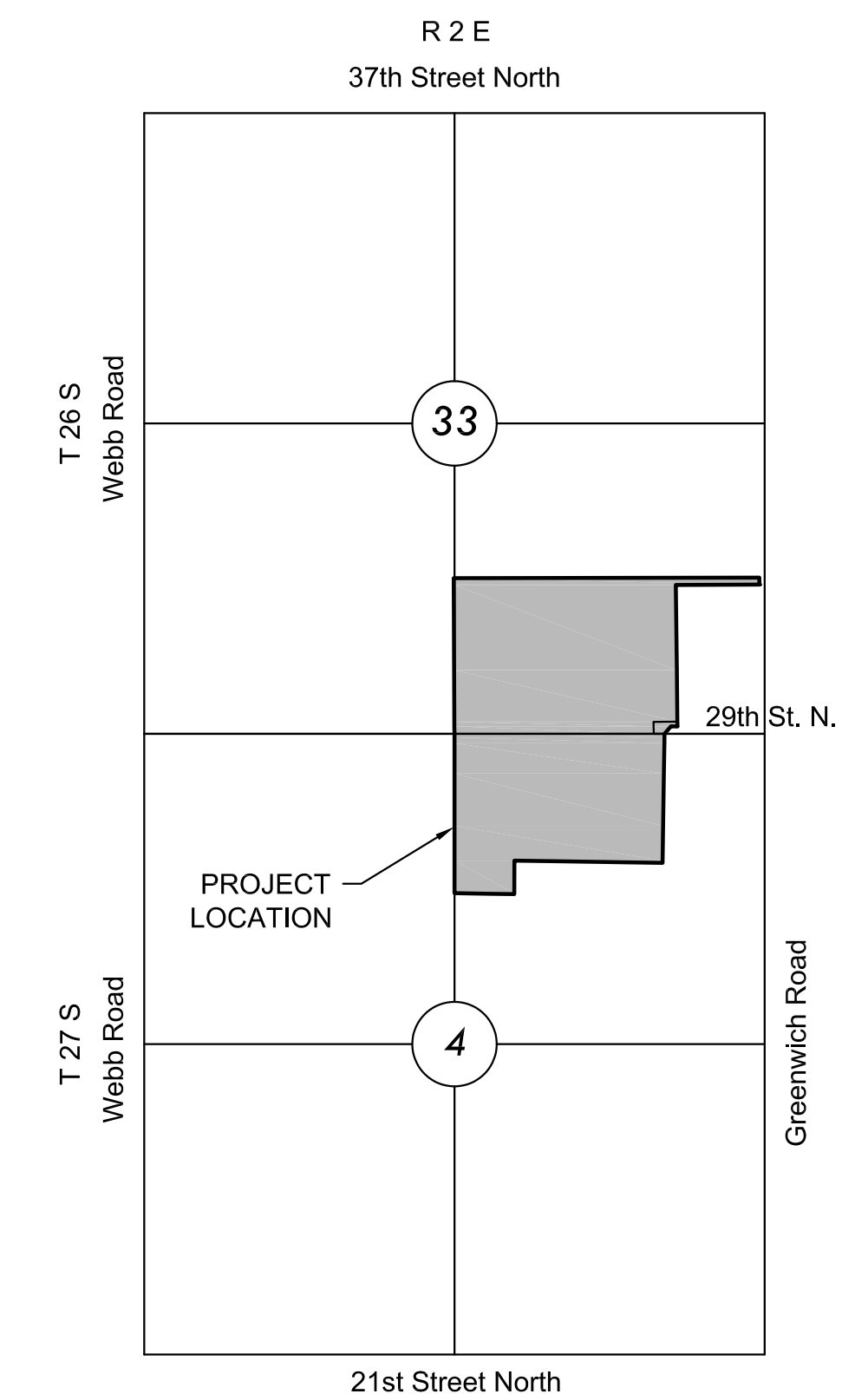
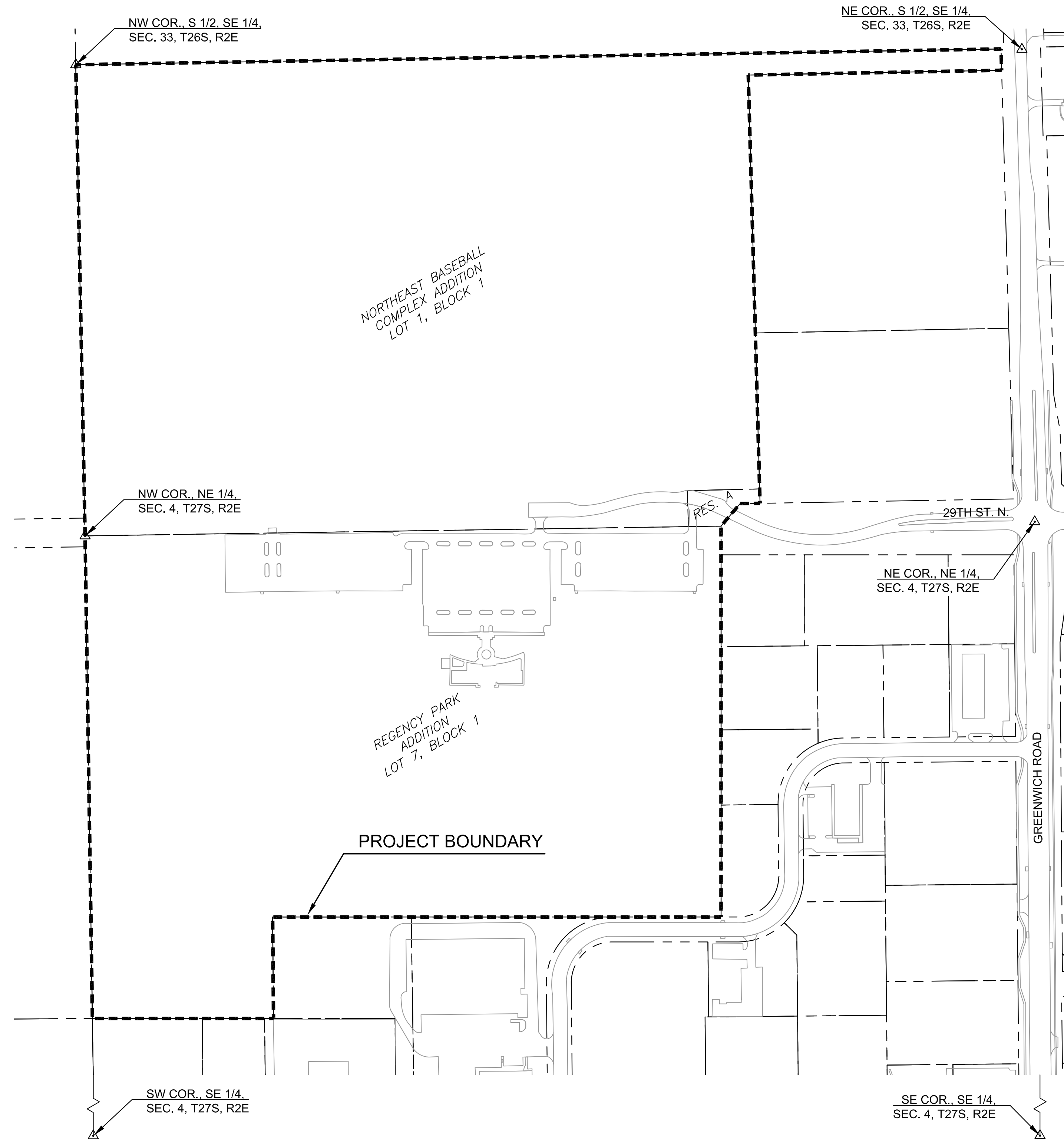
KANSAS ONE-CALL 687-2470

THE CONTRACTOR MUST NOTIFY THE FOLLOWING IN CASE OF AN EMERGENCY:

AT&T	1-800-246-8464
BLACK HILLS ENERGY (GAS)	1-800-694-6989
CITY OF WICHITA WATER & SEWER	1-316-219-8921
CITY OF WICHITA STORMWATER	1-316-268-4090
CITY OF WICHITA TRAFFIC	1-316-268-4034
COX COMMUNICATIONS	1-888-249-3530
KANSAS GAS SERVICE	1-888-482-4950
WESTAR ENERGY	1-800-544-4857
- THE CONTRACTOR SHALL BE RESPONSIBLE FOR PRESERVING PROPERTY IRONS. THE CONTRACTOR WILL BE REQUIRED TO RE-ESTABLISH ANY PROPERTY IRONS WHICH ARE DAMAGED OR DESTROYED BY HIS CONSTRUCTION OPERATIONS. SUCH IRONS SHALL BE RE-ESTABLISHED BY A LICENSED LAND SURVEYOR IN ACCORDANCE WITH STATE LAWS.
- A GEOTECHNICAL SUBGRADE RECOMMENDATION LETTER WAS PREPARED BY GSI ENGINEERING, TITLED 'SYNTHETIC TURF SUBGRADE RECOMMENDATIONS' FOR STRYKER MULTI-SPORT YOUTH COMPLEX, GSI JOB NO. 1773122, DATED OCTOBER 18, 2017. THIS LETTER IS HEREBY MADE PART OF THIS CONTRACT.
- THE CITY OF WICHITA SHALL SOLICIT BIDS FOR EARTHWORK AND UTILITY WORK TO BE COMPLETED AT THE STRYKER SPORTS SITE. THE CONTRACTOR FOR EARTHWORK AND UTILITY WORK SHALL BE SEPARATE AND DISTINCT FROM THE TURF PROCUREMENT CONTRACTOR.
- THE CONTRACTOR SELECTED BY THE CITY OF WICHITA TO PERFORM THE EARTHWORK AND UTILITY WORK SHALL BE RESPONSIBLE FOR MASS GRADING.
- THIS SEPARATE MASS GRADING PROJECT SHALL BE RESPONSIBLE FOR EARTHWORK TO WITHIN (+/-) 0.1' OF SUBGRADE AND PROVIDE A CERTIFIED AS-BUILT SURVEY TO SHOW COMPLIANCE TO PLAN ELEVATIONS. THIS TURF PROCUREMENT CONTRACT SHALL BE RESPONSIBLE FOR SUBGRADE MANIPULATION AND ALL IMPROVEMENTS ABOVE. REFER TO DETAILS.
- THE CITY OF WICHITA SHALL SOLICIT BIDS FOR THE INDOOR FACILITY WORK TO BE COMPLETED AT THE STRYKER SPORTS SITE. THE CONTRACTOR FOR THE INDOOR FACILITY WORK SHALL BE SEPARATE AND DISTINCT FROM THE TURF PROCUREMENT CONTRACTOR.

COMPLETION DATES

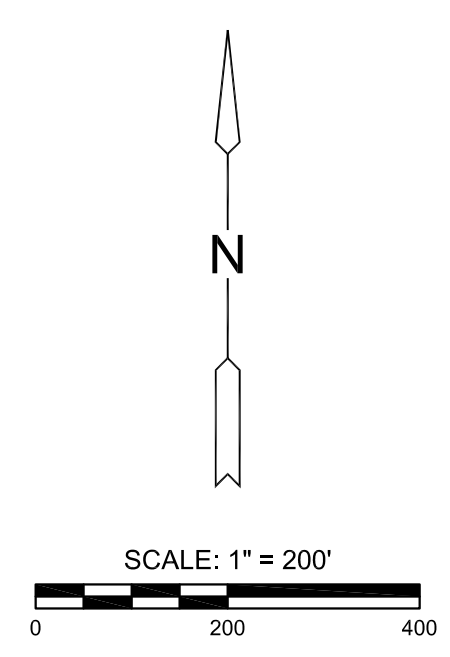
- UNDER CONTRACT WITH THE CITY OF WICHITA, SIX REGULAR TURF SOCCER FIELDS SHALL BE MASS GRADED, BY THE EARTHWORK AND UTILITY WORK CONTRACTOR, TO WITHIN (+/-) 0.1' OF PLAN ELEVATIONS AND AS-BUILT SURVEYED BY MARCH 30, 2018.
- THE EARTHWORK AND UTILITY WORK CONTRACTOR SHALL THEN DELIVER THE CHAMPIONSHIP TURF SOCCER FIELD, MASS GRADED TO WITHIN (+/-) 0.1' OF PLAN ELEVATIONS AND AS-BUILT SURVEYED BY APRIL 20, 2018.
- ALL BASE BID TURF SOCCER FIELDS, EXCEPT THE INDOOR TURF SOCCER FIELD, SHALL BE COMPLETE BY MAY 31, 2018.
- THE INDOOR TURF SOCCER FIELD SHALL BE INSTALLED IN THE 4TH QUARTER OF 2018 AND COMPLETE BY DECEMBER 31, 2018.
- SCHEDULE COMPLETION DATES ARE FOR BASE BID SCOPE OF WORK ONLY. IF SYNTHETIC TURF FIELD ALTERNATES ARE ACCEPTED THEN THE OWNER WILL COORDINATE COMPLETION DATES FOR THOSE FIELDS WITH THE SUCCESSFUL BIDDER.



VICINITY MAP
No Scale

INDEX TO DRAWINGS

SHEET NO.	DESCRIPTION
G.001	TITLE SHEET
LA1.001	CHAMPIONSHIP FIELD LAYOUT
LA1.002	REGULAR FIELD LAYOUT
LA1.003	INDOOR FIELD LAYOUT
LA1.004	SYNTHETIC TURF DETAILS



CITY OF WICHITA, KS
STRYKER SPORTS
TURF PROCUREMENT

©2017 MKEC Engineering All Rights Reserved www.mkec.com
These drawings and their contents, including, but not limited to, all concepts, designs, & ideas are the exclusive property of MKEC Engineering (MKEC), and may not be used or reproduced in any way without the express consent of MKEC.

TITLE SHEET

PROJECT NO.	1701010567	
DATE	11-01-17	
SCALE	1"=200'	
DESIGNED	DRAWN	CHECKED
SPE	SPE	MAB
NO.	REVISION	DATE
0	TURF PROC. - IFC	11-01-17

SHEET NO.
G.001