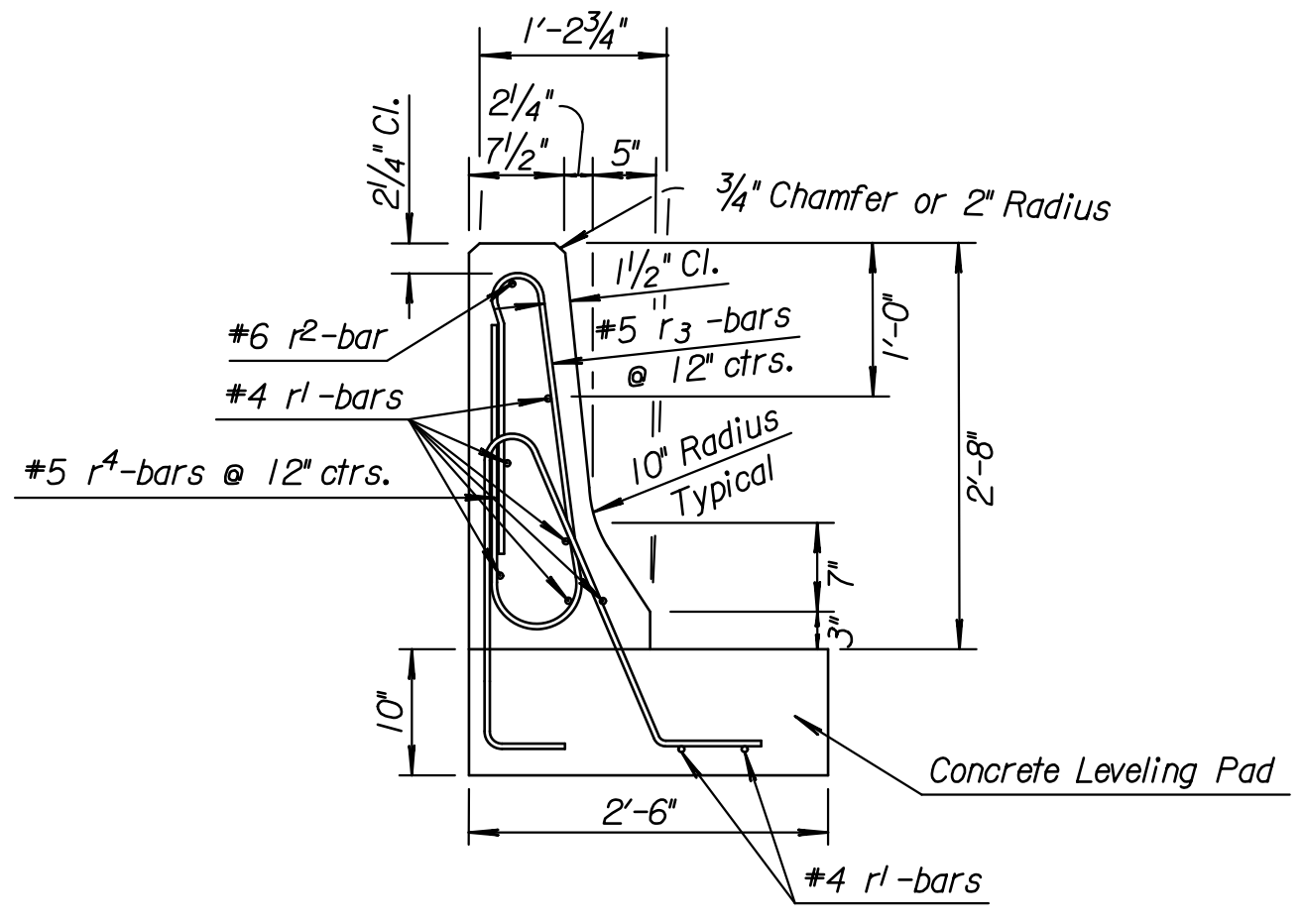
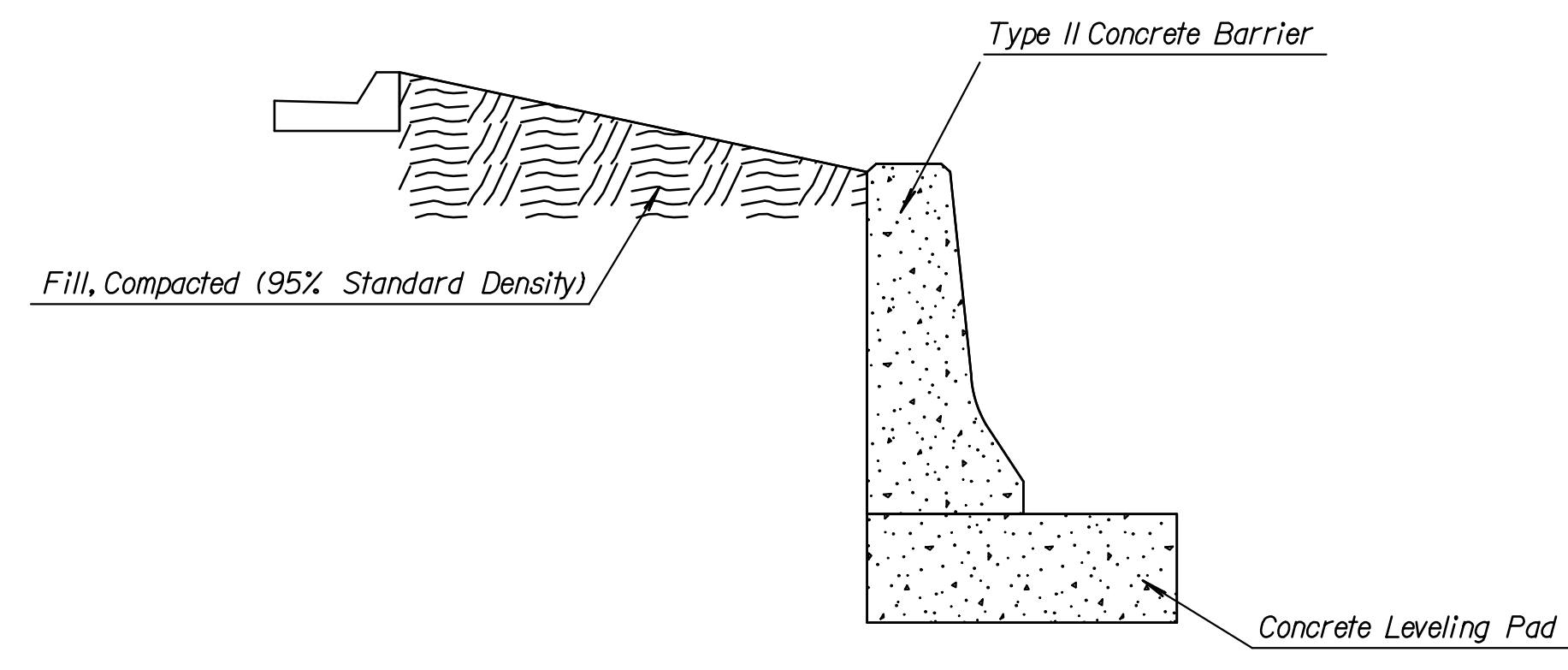


GENERAL NOTE

Use Concrete Grade 3.0 (AE)
 Use Grade 60 Epoxy Coated reinforcing steel. See details for spacing, keep a minimum reinforcing steel clear distance of 1 1/2". The section furnished must generally comply with the dimensions shown. Requests for minor variations in section geometry may be submitted for review.
 Concrete barrier shall be cast in place construction only. Precast barriers are not permitted.
 Bevel all exposed edges with a 3/4" triangular molding.



ELEVATION (Section)
 TYPE II BARRIER

TYPE II CONCRETE BARRIER
 (For Information Only)

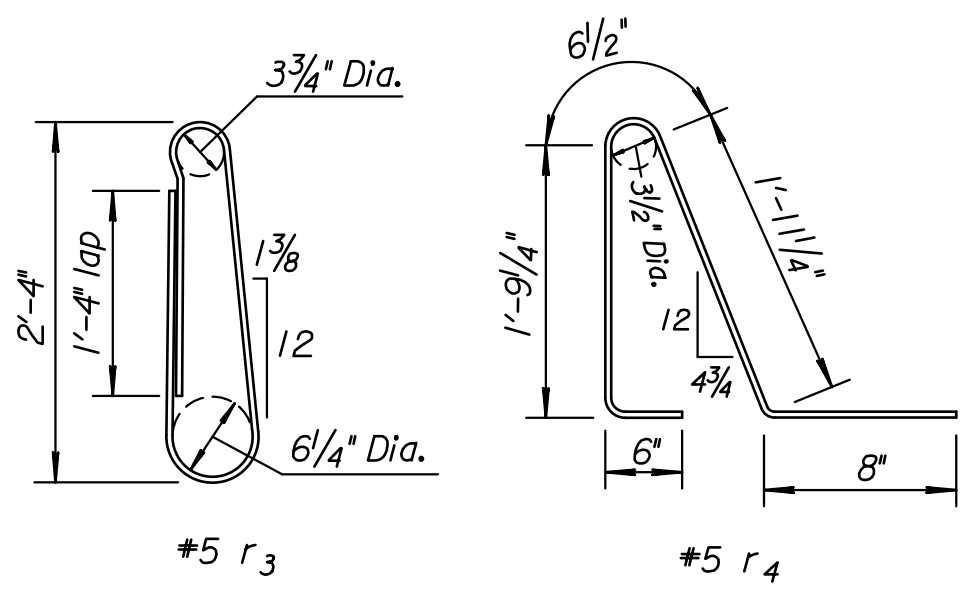
Bar	Bar Size	Shape	No. of Bars	Length ft.	Weight lbs.
r ₁	#4	—	8	1'-0"	5.3
r ₂	#6	—	1	1'-0"	1.5
r ₃	#5	U	1	6'-7"	6.9
r ₄	#5	L	1	5'-5"	5.6

Barrier Conc. Gr. 3.0 (AE) .08 cu. yd./lin ft.
 Reinf. Steel (Grade 60 Epoxy Coated) 19.3 lbs./lin. ft.

Quantities shown are for (1) lin. ft. Type II Concrete Barrier Section on a concrete leveling pad
 These quantities are provided for information only and don't reflect additional overlap lengths in longitudinal steel.

RECAPITULATION OF QUANTITIES
 (for information only)

Description	Length (FT.)	Concrete (C.Y.)	Steel (LBS)
Concrete Barrier	39.8	3.2	768.1
Leveling Pad	39.8	3.1	768.1
Total		6.3	768.1



CONSULTANTS:

45TH & HILLSIDE
 INTERSECTION IMPROVEMENT
 WICHITA, KANSAS



REVISIONS:	DESCRIPTION	DATE	MARK

PROJ NO: 87 N-0616-01
 SCALE: N/A
 DATE: 10/9/2017
 DESIGNED BY: TAU
 DRAWN BY: TAU
 CHECKED BY: MDB

SHEET TITLE:
**TYPE II
 CONCRETE
 BARRIER**

SHEET NO.
59