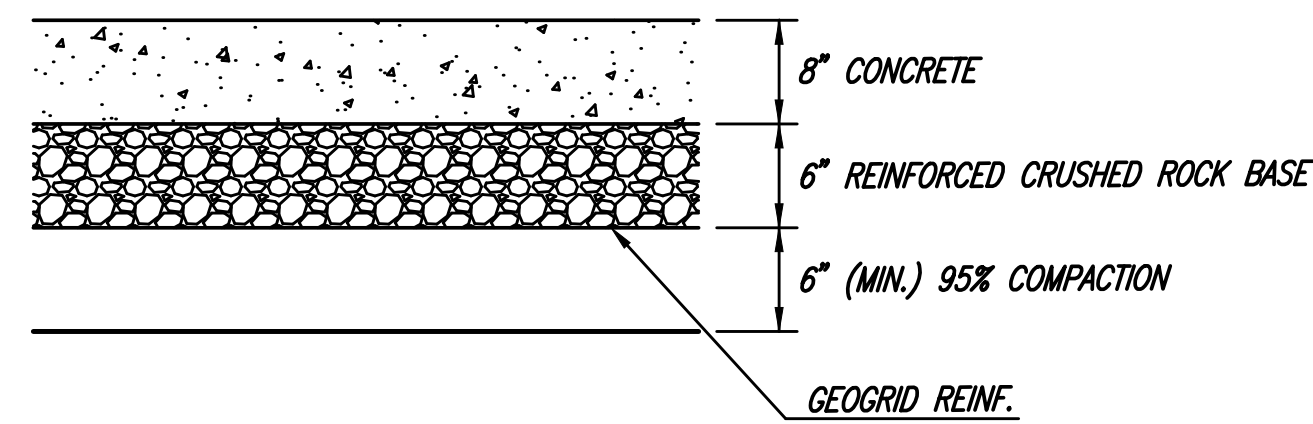
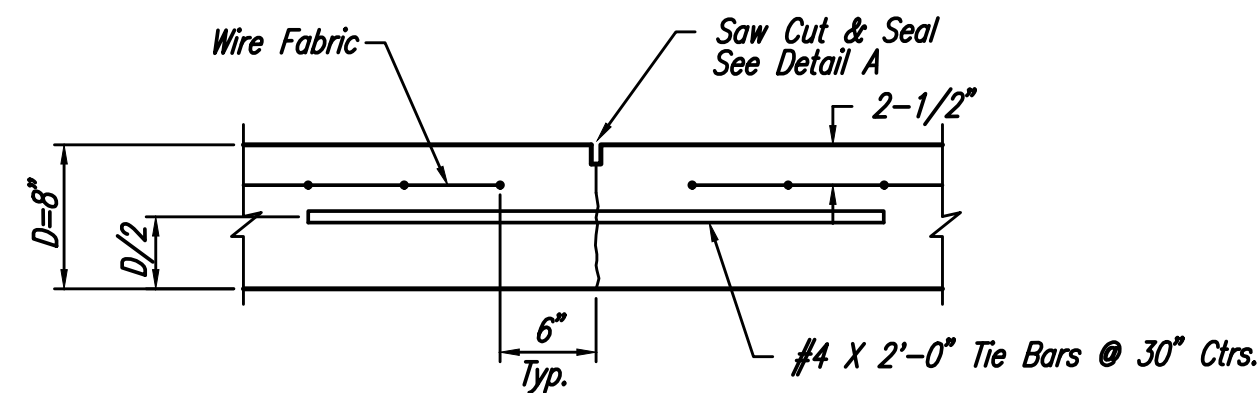


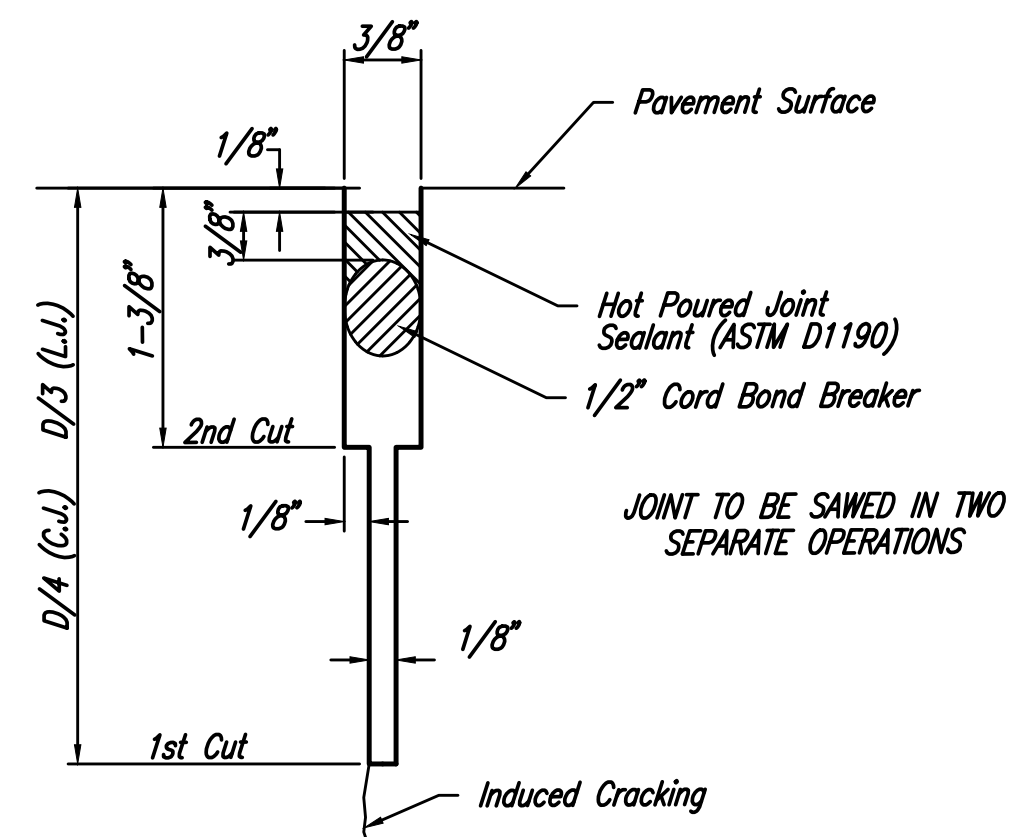
6" CONCRETE PAVEMENT



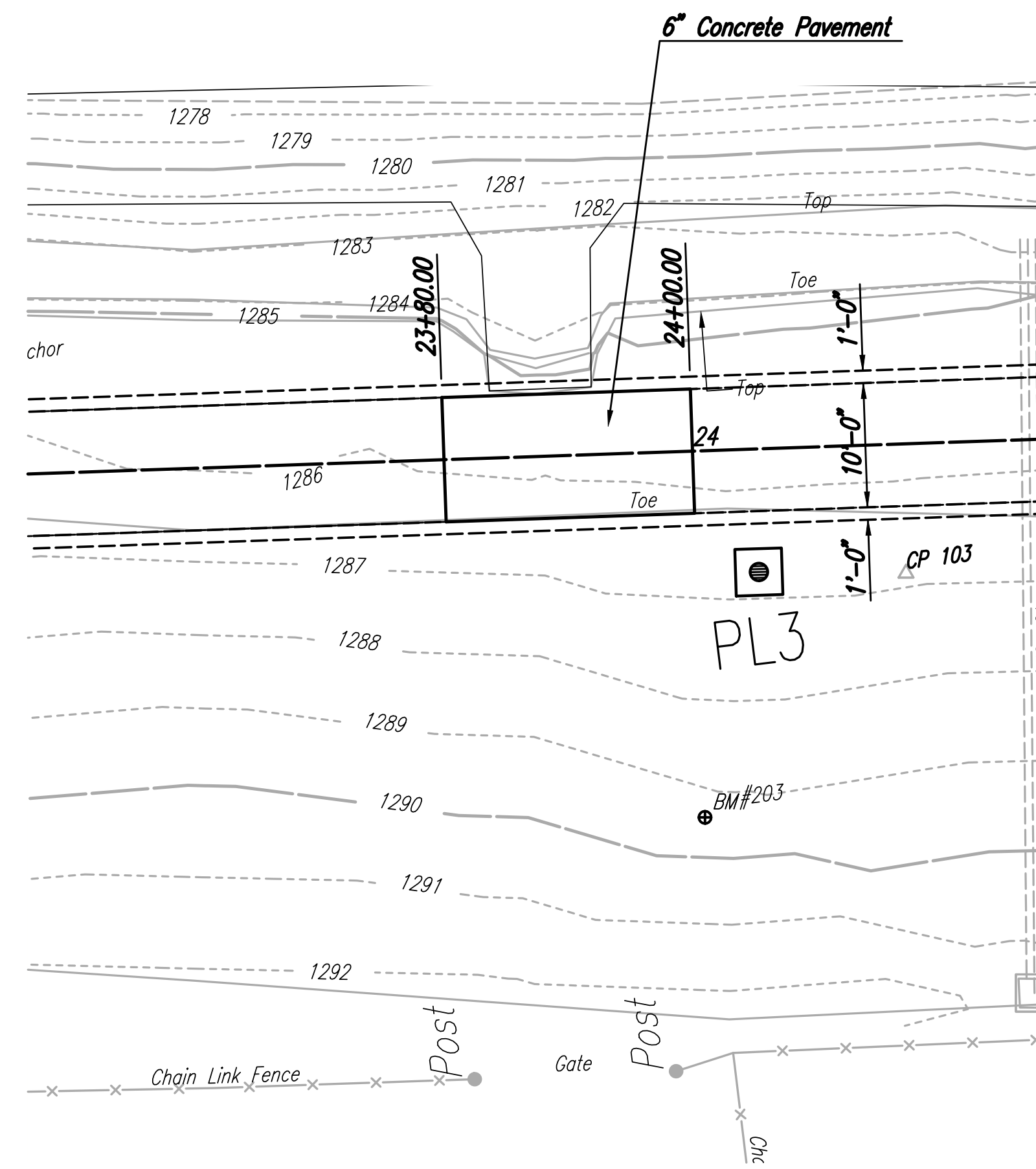
8" REINFORCED CONCRETE PAVEMENT



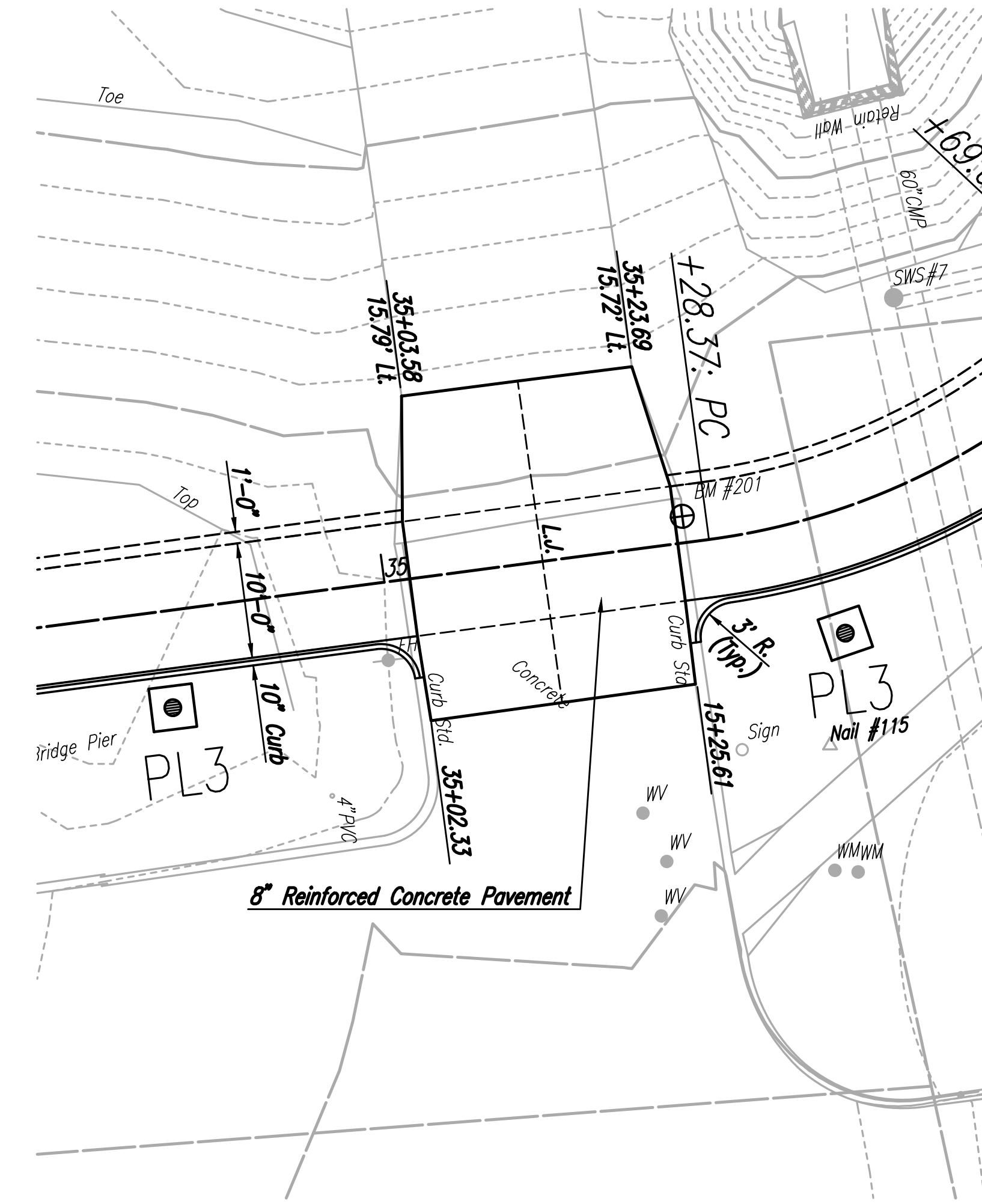
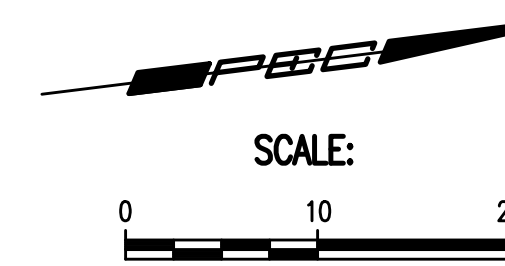
LONGITUDINAL JOINT DETAIL (L.J.)



SAW JOINT DETAIL (DETAIL A)



PLAN



PLAN

Scaled 11-06-2017 4:46:15 PM by BJS
 Plot Scale 1:1 11-09-2017 1:25:52 PM by BJS
 U:\Wichita-Civil\2016\160312\001\Main-Trans\Drawings\160312-001-12C-CONCRETE PAVEMENT DETAILS (6)

| | | |
|-------------------|---|---------------|
| | EAST BANK ARK RIVER-LINCOLN TO GANDER MOUNTAIN SIDEWALK IMPROVEMENTS | |
| | CONCRETE PAVEMENT DETAILS (6) | |
| | GARY JANZEN, P.E. - CITY ENGINEER CITY OF WICHITA PROJECT NO. 472-85303 | |
| | PROFESSIONAL ENGINEERING CONSULTANTS, P.A. 303 SOUTH TOPEKA WICHITA, KS 67202 316-262-2691 www.pec1.com | |
| No. _____ | Revision _____ | By _____ |
| Designed by _____ | Job No. 31-160312-001 | Sht. 12 of 37 |
| Drawn by _____ | Date November 2017 | |