

COORDINATE LIST-SIDEWALK		
POINT	NORTH	EAST
6000	1,680,566.5681	1,647,197.4833
6001	1,680,812.2419	1,647,237.5671
6002	1,680,852.3369	1,647,242.4558
6003	1,680,943.2346	1,647,249.8281
6004	1,680,978.9333	1,647,254.0196
6005	1,681,086.6730	1,647,270.6150
6006	1,681,101.1815	1,647,272.6326
6007	1,681,215.4412	1,647,286.8198
6008	1,681,226.3243	1,647,288.2926

6000 = COORDINATE POINT NO.

COORDINATE LIST-SIDEWALK		
POINT	NORTH	EAST
6009	1,681,353.4866	1,647,306.9263
6010	1,681,363.7072	1,647,307.8913
6011	1,681,480.0320	1,647,312.8722
6012	1,681,509.9099	1,647,315.0498
6013	1,681,581.2874	1,647,322.4072
6014	1,681,611.4036	1,647,327.3850
6015	1,681,632.9750	1,647,332.3196
6016	1,681,652.5474	1,647,335.9835
6017	1,681,854.4299	1,647,365.5088
6018	1,681,882.2583	1,647,368.7852

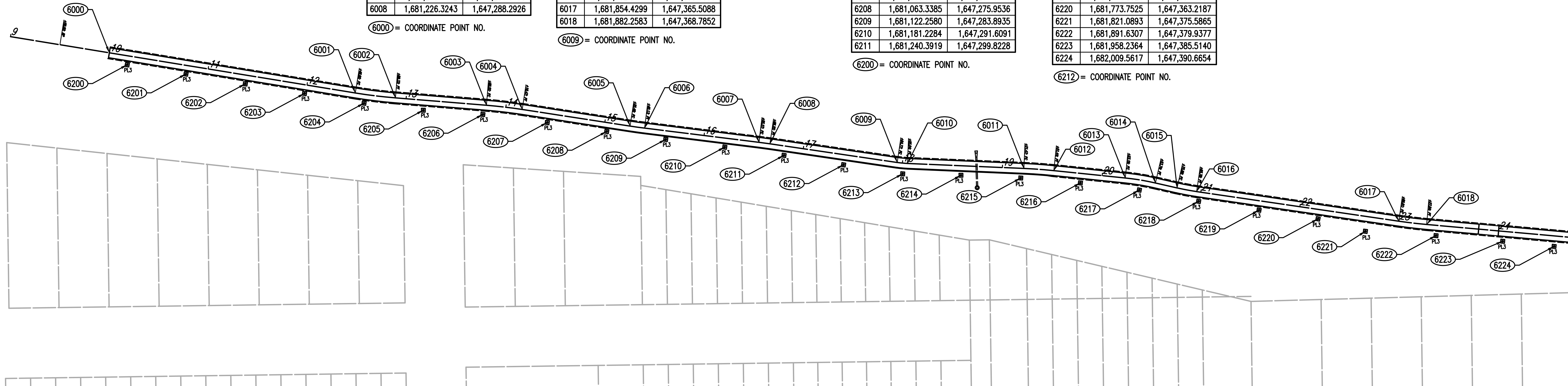
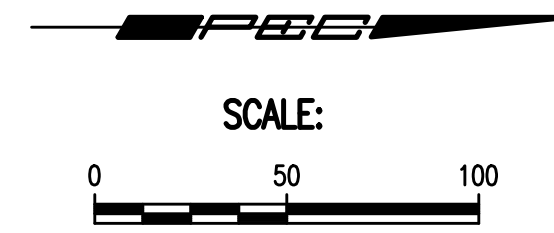
6009 = COORDINATE POINT NO.

COORDINATE LIST-LIGHT POLES		
POINT	NORTH	EAST
6200	1,680,584.4102	1,647,209.4614
6201	1,680,643.0718	1,647,218.6864
6202	1,680,702.3542	1,647,228.4923
6203	1,680,761.5075	1,647,238.0491
6204	1,680,820.9495	1,647,247.7594
6205	1,680,880.1678	1,647,254.7707
6206	1,680,939.6279	1,647,258.9705
6207	1,681,003.9370	1,647,267.0676
6208	1,681,063.3385	1,647,275.9536
6209	1,681,122.2580	1,647,283.8935
6210	1,681,181.2284	1,647,291.6091
6211	1,681,240.3919	1,647,299.8228

6200 = COORDINATE POINT NO.

COORDINATE LIST-LIGHT POLES		
POINT	NORTH	EAST
6212	1,681,299.8807	1,647,309.2125
6213	1,681,358.9706	1,647,318.2384
6214	1,681,417.1618	1,647,319.6913
6215	1,681,476.8837	1,647,322.4289
6216	1,681,536.4215	1,647,327.3519
6217	1,681,595.2855	1,647,334.4413
6218	1,681,654.4954	1,647,345.6938
6219	1,681,714.8526	1,647,354.4584
6220	1,681,773.7525	1,647,363.2187
6221	1,681,821.0893	1,647,375.5865
6222	1,681,891.6307	1,647,379.9377
6223	1,681,958.2364	1,647,385.5140
6224	1,682,009.5617	1,647,390.6654

6212 = COORDINATE POINT NO.



COORDINATE LIST-LIGHT POLES		
POINT	NORTH	EAST
6225	1,682,067.0025	1,647,395.4092
6226	1,682,129.5382	1,647,401.6100
6227	1,682,186.7945	1,647,409.8228
6228	1,682,246.1675	1,647,416.6484
6229	1,682,303.9730	1,647,422.5612
6230	1,682,363.1696	1,647,427.4143
6231	1,682,422.6459	1,647,429.0354
6232	1,682,482.7984	1,647,433.8525
6233	1,682,541.7738	1,647,440.1010
6234	1,682,600.6050	1,647,446.9722

6225 = COORDINATE POINT NO.

COORDINATE LIST-LIGHT POLES		
POINT	NORTH	EAST
6235	1,682,662.0276	1,647,455.0211
6236	1,682,721.8862	1,647,461.1692
6237	1,682,783.5254	1,647,465.7004
6238	1,682,843.1527	1,647,477.7197
6239	1,682,902.1037	1,647,495.3176
6240	1,682,956.8464	1,647,519.4559
6241	1,683,018.5152	1,647,532.8146
6242	1,683,077.1502	1,647,533.5879
6243	1,683,134.2384	1,647,498.1939
6244	1,683,209.2286	1,647,467.2614

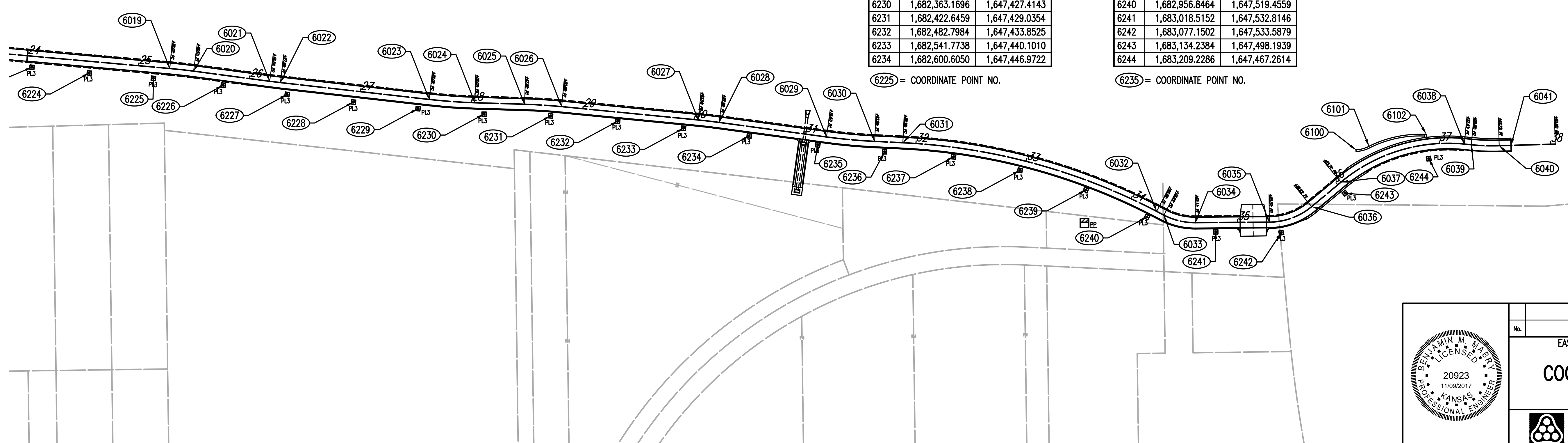
6235 = COORDINATE POINT NO.

COORDINATE LIST-RETAINING WALL		
POINT	NORTH	EAST
6100	1,683,144.0765	1,647,459.4053
6101	1,683,155.7070	1,647,456.2793
6102	1,683,206.9156	1,647,445.2789

6100 = COORDINATE POINT NO.

COORDINATE LIST-SIDEWALK		
POINT	NORTH	EAST
6019	1,682,081.6509	1,647,386.6127
6020	1,682,103.0040	1,647,388.9853
6021	1,682,171.1325	1,647,398.0408
6022	1,682,180.7991	1,647,399.2300
6023	1,682,314.0580	1,647,414.3075
6024	1,682,354.9297	1,647,417.2420
6025	1,682,399.4533	1,647,418.6088
6026	1,682,432.6211	1,647,420.7321
6027	1,682,555.0211	1,647,432.6636
6028	1,682,573.6293	1,647,434.8301
6029	1,682,669.8443	1,647,447.8635
6030	1,682,712.9766	1,647,451.8132
6031	1,682,738.2347	1,647,453.0262
6032	1,682,965.5519	1,647,514.4015
6033	1,682,972.0609	1,647,517.7855
6034	1,683,000.1686	1,647,524.5485
6035	1,683,066.4226	1,647,524.0724
6036	1,683,104.4091	1,647,510.1617
6037	1,683,130.5920	1,647,488.3362
6038	1,683,241.1000	1,647,454.2546
6039	1,683,247.3230	1,647,454.8575
6040	1,683,272.3289	1,647,455.7076
6041	1,683,282.9971	1,647,455.4024

6019 = COORDINATE POINT NO.



Sowed 11-06-2017 4:11:45 PM by BS  
 Plot Scale 1:1 -09-2017 1:25:32 PM by BS  
 U:\Wichita-Civil\2016\160312\001\Main-Trans\Drawings\160312-001-09C-COORDINATES GEOMETRY PLAN

Revision	By	Date
EAST BANK ARK RIVER-LINCOLN TO GANDER MOUNTAIN SIDEWALK IMPROVEMENTS		
<b>COORDINATES GEOMETRY PLAN</b>		
GARY JANZEN, P.E. - CITY ENGINEER CITY OF WICHITA PROJECT NO. 472-85303		
PROFESSIONAL ENGINEERING CONSULTANTS, P.A. 303 SOUTH TOPEKA WICHITA, KS 67202 316-262-2691 www.pec1.com		
Designed by	Job No. 31-160312-001	Sht. 09 of 37
Drawn by	Date November 2017	