

LATERAL 41, MAIN T, SANITARY SEWER 20

to serve

Chisholm Cove Addition

CITY OF WICHITA, KANSAS

Gary Janzen, P.E. City Engineer

Project Number 468-85199

O.C.A. NO. 744443

Mies Construction - Contractor
J. Brand - City of Wichita, Field Project Engineer
T. Dvorak - City of Wichita, Inspector
 As-built
 Completion Date: 1/3/2018
 : apr 10/30/2017

GENERAL NOTES:

1. The Contractor shall comply with all applicable safety regulations. All construction shall be completed following current City Standard Specifications and Special Provisions.

2. Contractor will be required to provide notice to utility companies a minimum of seventy-two (72) hours prior to any excavation, as follows:

Kansas One-Call 687-2470

The Contractor must notify the following in case of an emergency:

Cox Communications 260-7204
 Kansas Gas Service 1-888-482-4950
 Black Hills Energy 941-1628
 Westar 383-8600
 AT&T 1-800-288-8313
 City of Wichita Water Department 262-6000
 City of Wichita Sewer Maintenance 262-6000

3. Utility service lines, poles, etc. are to be adjusted as necessary by others prior to construction unless the plans specifically call for their adjustment by the Contractor or unless the plans specifically identify a utility to be adjusted by its owner during construction. Existing utilities and their location, as shown on the plans, represent the best information obtainable for design. The Contractor will be required to work around existing utilities within the right-of-way which do not conflict with proposed construction.

4. Rubble from the removal of miscellaneous structures and excess excavation which is to be wasted shall be disposed of on sites to be provided by the Contractor. These sites shall be approved by the Engineer as to suitability, appearance and site location. Locations, in the opinion of the Engineer, that will leave an unsightly appearance will not be approved. All disposal sites must be approved by the Kansas Department of Health and Environment. Material either stockpiled or disposed of in a flood plain will require a Kansas State Board of Agriculture permit. Any material dumped in waters of the United States or wetlands is subject to U.S. Corps of Engineers permitting regulations. Any material buried or stockpiled beyond approved construction limits will require additional archaeological investigations unless buried in a previously approved borrow location.

5. Trees and shrubs in public right-of-way which are in direct conflict with proposed new construction shall be removed by the Contractor with the Engineer's approval. Trees and shrubs which are not in direct conflict with proposed new construction shall be saved and protected from damage.

6. The Contractor shall give all property owners and/or tenants of developed property abutting the construction of this project a minimum of ten (10) days notice prior to start of construction.

7. The Contractor shall be responsible for preserving property irons. The Contractor will be required to re-establish any property irons which are damaged or destroyed by his construction operations. Such irons shall be re-established by a licensed land surveyor in accordance with state laws.

8. If traffic will be impacted by construction, a traffic control plan must be submitted and approved by the City Traffic Engineer, Brian Coon at traffic@wichita.gov before construction can begin. The Contractor shall be responsible for all traffic control measures to facilitate construction. All construction zone markings and signage shall conform to the latest version of the Manual on Uniform Traffic Control Devices (MUTCD) as published by the US Dept. of Transportation, Federal Highway Administration. All costs associated with construction markings and signage shall be the Contractors responsibility.

10. All elevations shown are NAVD 88.

11. All areas disturbed during construction that will not be under proposed pavement shall be restored to match existing conditions.

12. The Contractor shall protect from damage and support existing utilities through constructions as approved by the utility owner and the Engineer at the contractors expense.

13. Contractor shall limit the extent of trench openings overnight and weekends to less than 50 feet.

14. Any sidewalk, drive approach, curb, or street pavement removed to construct project must have a pavement cut permit and be replaced by the City contractor. Permits can be obtained by calling 316-268-4501 or 316-268-4480.

15. All stubs and plugged pipes shall be located with green plastic tape in the same manner as risers.

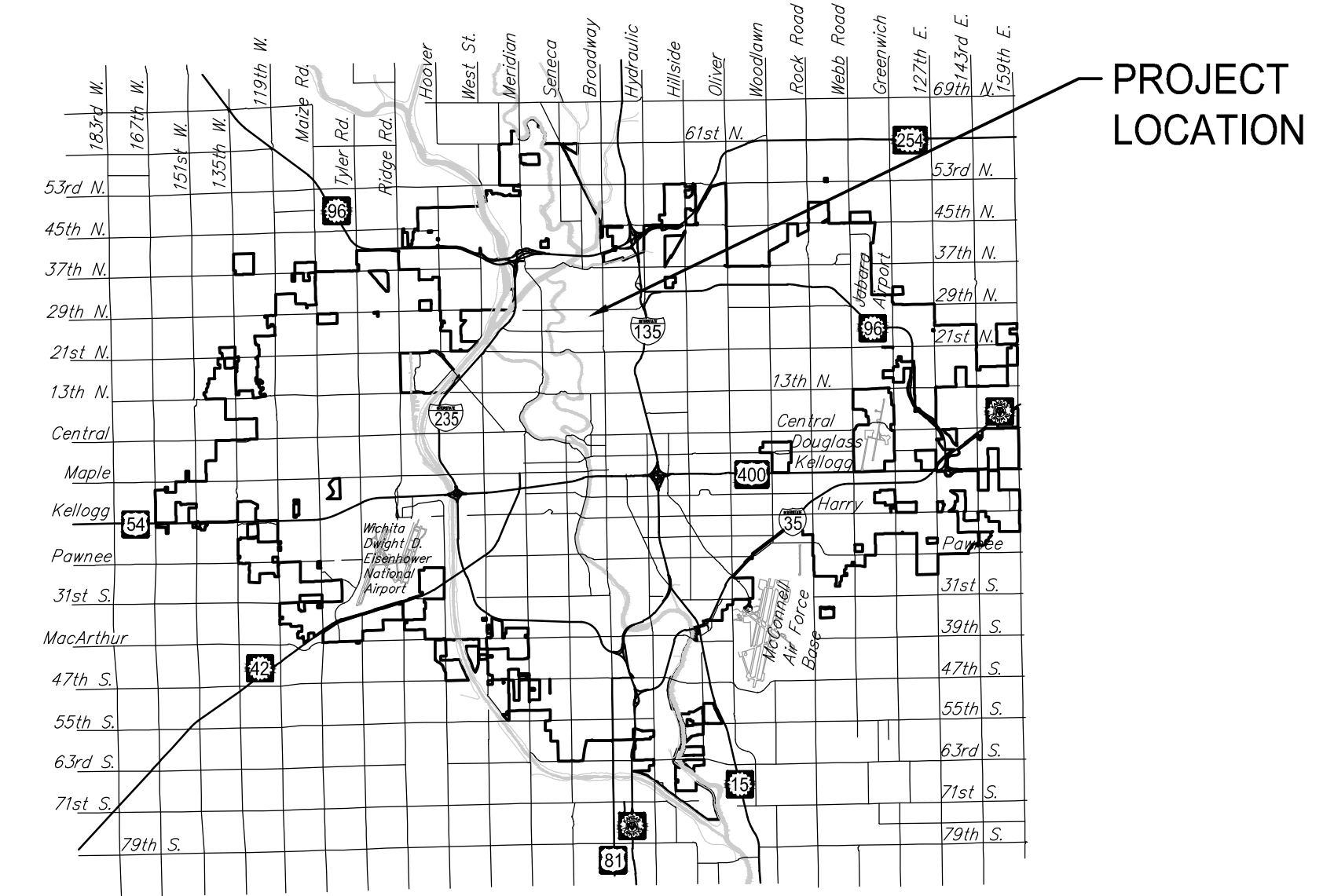
16. Connecting to Existing Manholes:
 Prior to laying sewer lines using existing stubs in existing manholes, the Contractor shall expose and verify the elevation, grade and alignment of existing stubs and notify the Engineer of any deviation from the plans. Where connection to an existing manhole that does not have an existing stub or the stub is unusable due to elevation grade or alignment, the Contractor shall bore cut into existing manhole wall to make connection using approved water stop gasket, and reshape the existing manhole invert to provide smooth flow. The cost to connecting to existing manholes is incidental to the project.

17. Contractor shall provide positive drainage away from all manhole covers.

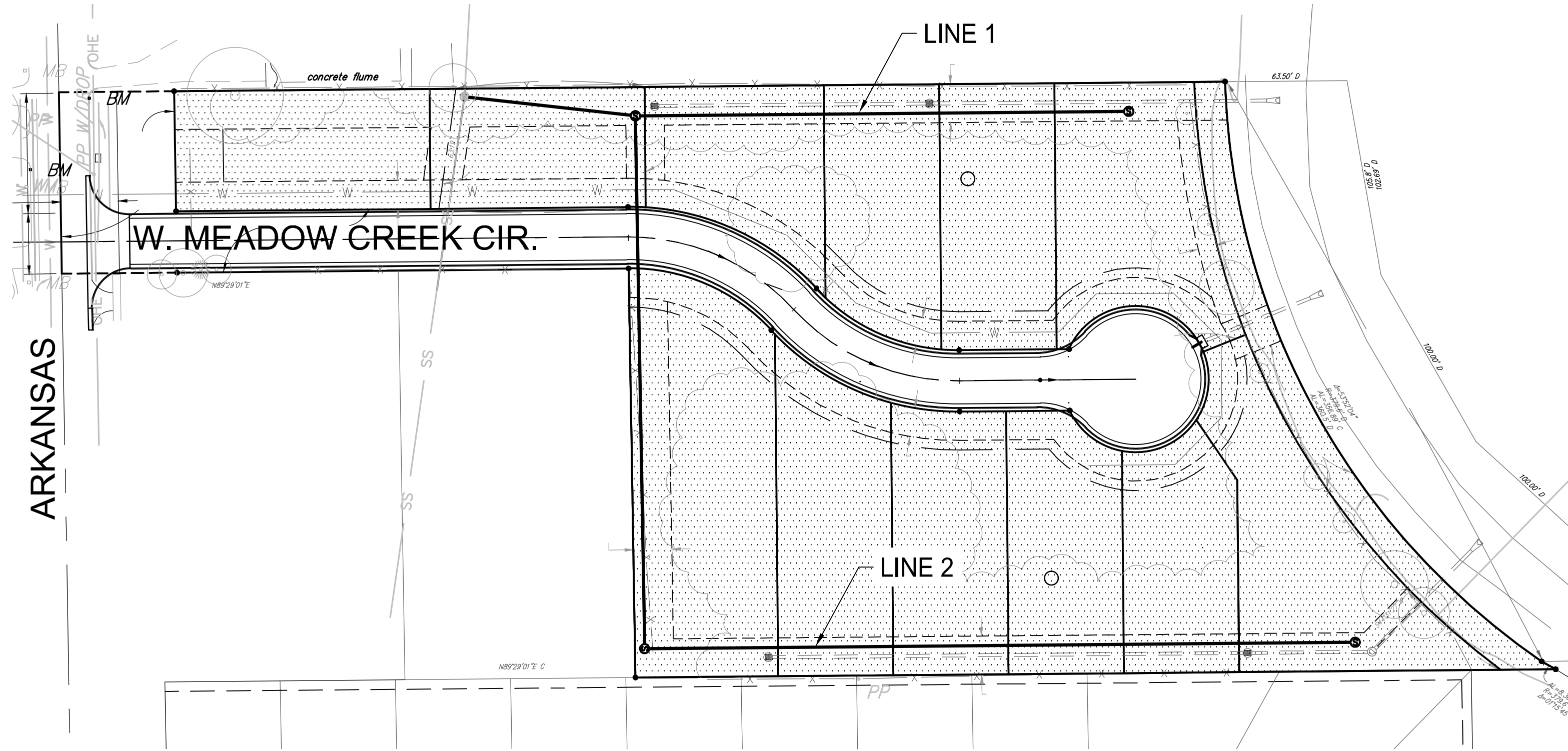
18. The Contractor shall prevent any construction debris from entering the existing sanitary sewer during construction.

19. The Contractor shall be responsible for maintaining continuous flow of sewage through construction. Contractors proposed method for maintaining sewage flow shall be submitted and approved by the Sewer Maintenance Division (316-268-4073) prior to starting and by-passing of sewage flows.

20. Any over excavation from manhole and pipe removal shall be backfilled with AB-3 compacted to 90-95% ASTM D698.

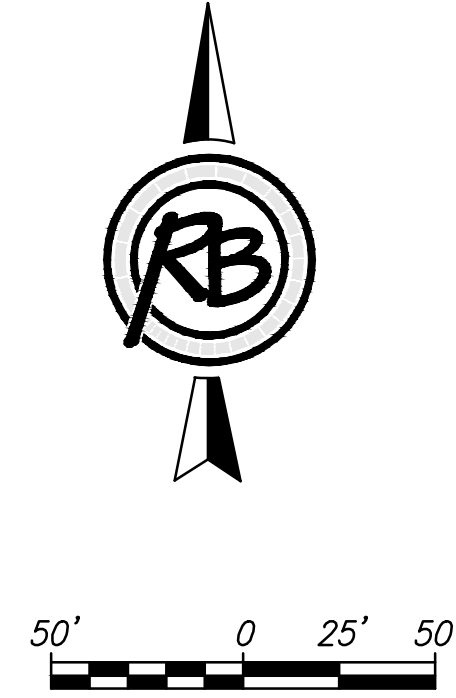


Vicinity Map



Sheet Index

Sheet	Title
1	SS Titlesheet
2	SS Line 1
3	SS Line 2
4	Pre-Cast SS MH
5	MH Frame & Cover
6	Easement Grading
7	SS-COORDINATES
8	SS-ADDITION COORDINATES
9	Erosion Control-SS
10	BOC
11	Silt Fc
12	Straw Bale
13	SIP
14	SDP
15	SS-Plat



Benchmarks

BENCHMARK:
 POINT #30
 CHISELED SQUARE ON THE TOP OF CURB, SOUTH RETURN OF SOUTH DRIVE OF HOUSE AT 2844 N. ARKANSAS (EAST SIDE)
 ELEVATION = 1314.51 (NAVD88)

BENCHMARK:
 POINT #31
 CHISELED SQUARE TOP OF CURB, SOUTH RETURN OF DRIVE OF HOUSE AT 2849 N. ARKANSAS (WEST SIDE)
 ELEVATION = 1314.42 (NAVD88)

IMPROVEMENT DISTRICT

July 2017

PLANS PREPARED BY



ENGINEERING | SURVEYING | LANDSCAPE ARCHITECTURE | GOVERNMENT
 924 NORTH MAIN WICHITA, KANSAS 67203 P (316) 264-8008 F (316) 264-4621
 WWW.RBKANSAS.COM 4866E