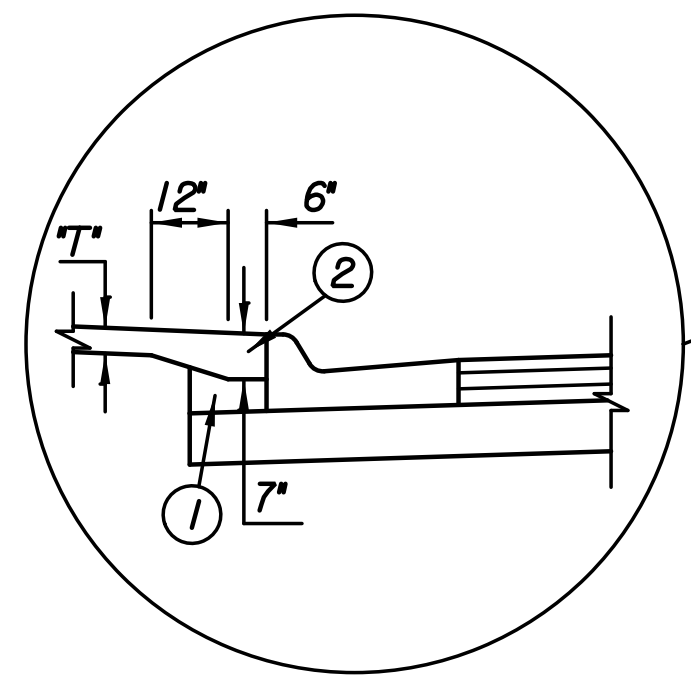
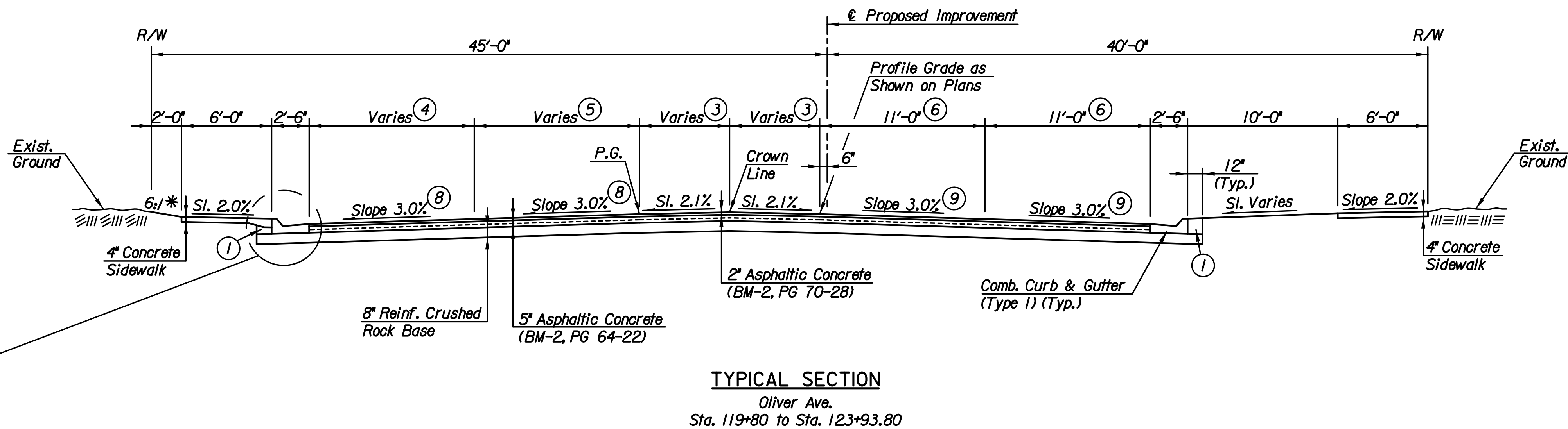


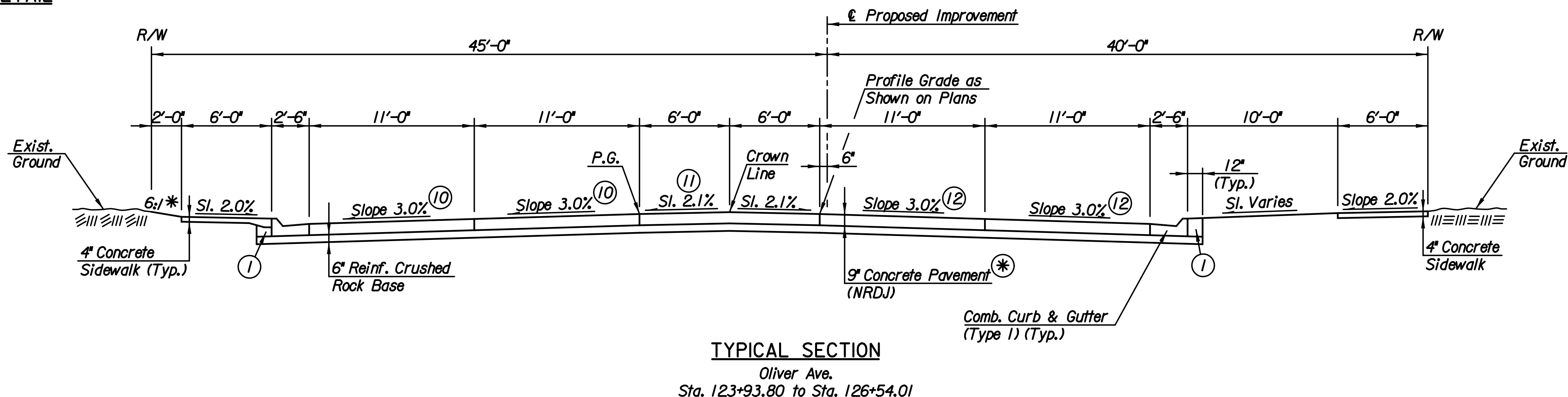
Plotted By: sheldon.bfn@date: 12/18/2017 8:57:22 AM  
 FILE: U:\Wichita-Civil\2015\1508\1000\Trans\Road\DCN\Project\Typicals\15081-Typical1.dgn



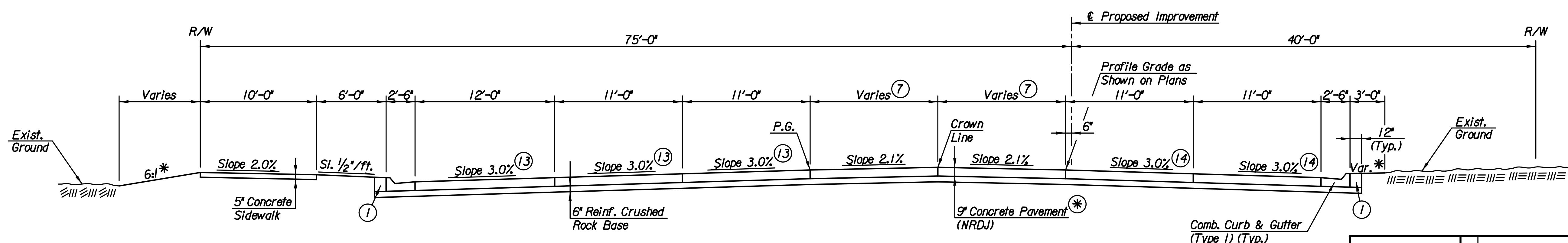
**TYP. THICKENED SIDEWALK EDGE DETAIL**  
 (Required when Sidewalk abuts Curb.)



**TYPICAL SECTION**  
 Oliver Ave.  
 Sta. 119+80 to Sta. 123+93.80



**TYPICAL SECTION**  
 Oliver Ave.  
 Sta. 123+93.80 to Sta. 126+54.01



**TYPICAL SECTION**  
 Oliver Ave.  
 Sta. 126+54.01 to Sta. 129+04  
 Sta. 134+68 to Sta. 135+91.49

- \* See Cross Sections for Variations.
- (\*) 9" Concrete Pavement (Reinf.) from Sta. 125+97.80 to Sta. 127+02.86.
- (1) Backfill behind curb. Quantities for this work are included in the Earthwork Summary Table.
- (2) The additional thickness of concrete sidewalk will be paid for as "Concrete Sidewalk, Thickened Edge".
- (3) Varies from 0'-0" at Sta. 119+80 to 6'-0" at Sta. 123+89.84.
- (4) Varies from 9'-0" at Sta. 119+80 to 11'-0" at Sta. 123+89.84.
- (5) Varies from 9'-3" at Sta. 119+80 to 11'-0" at Sta. 123+89.84.
- (6) 9'-3" from Sta. 119+80 to Sta. 120+15.27. Varies from 9'-3" at Sta. 120+15.27 to 11'-0" at Sta. 121+35.
- (7) Varies from 6'-0" at Sta. 127+02.86 to 11'-0" at Sta. 129+04.
- (8) Cross Slope Varies from -4.86% at Sta. 119+80 to -3.0% at Sta. 120+80.
- (9) Cross Slope Varies from -3.43% at Sta. 119+80 to -3.0% at Sta. 120+00.
- (10) Cross Slope Varies from -3.00% at Sta. 125+40 to -1.10% at Sta. 126+38.
- (11) Cross Slope Varies from -2.08% at Sta. 125+87 to -1.10% at Sta. 126+38.
- (12) Cross Slope Varies from -3.00% at Sta. 125+25 to -2.08% at Sta. 125+75.
- (13) Cross Slope Varies from -1.19% at Sta. 126+72 to -3.00% at Sta. 127+65.
- (14) Cross Slope Varies from -2.08% at Sta. 127+18 to -3.00% at Sta. 127+65.

No.	Revision	By	Date
17TH STREET AND OLIVER INTERSECTION			
<b>TYPICAL SECTIONS</b>			
<b>OLIVER AVE.</b>			
GARY JANZEN, P.E.-CITY ENGINEER CITY OF WICHITA PROJECT NO. 472-85214			
<b>PEC</b> PROFESSIONAL ENGINEERING CONSULTANTS, P.A. 303 SOUTH TOPEKA WICHITA, KS 67202 316-262-2691 www.pec1.com			
Designed by	CKC	Job No.	15081
Drawn by	CP, SVB	Date	Dec., 2017
			Sheet 2 of 107