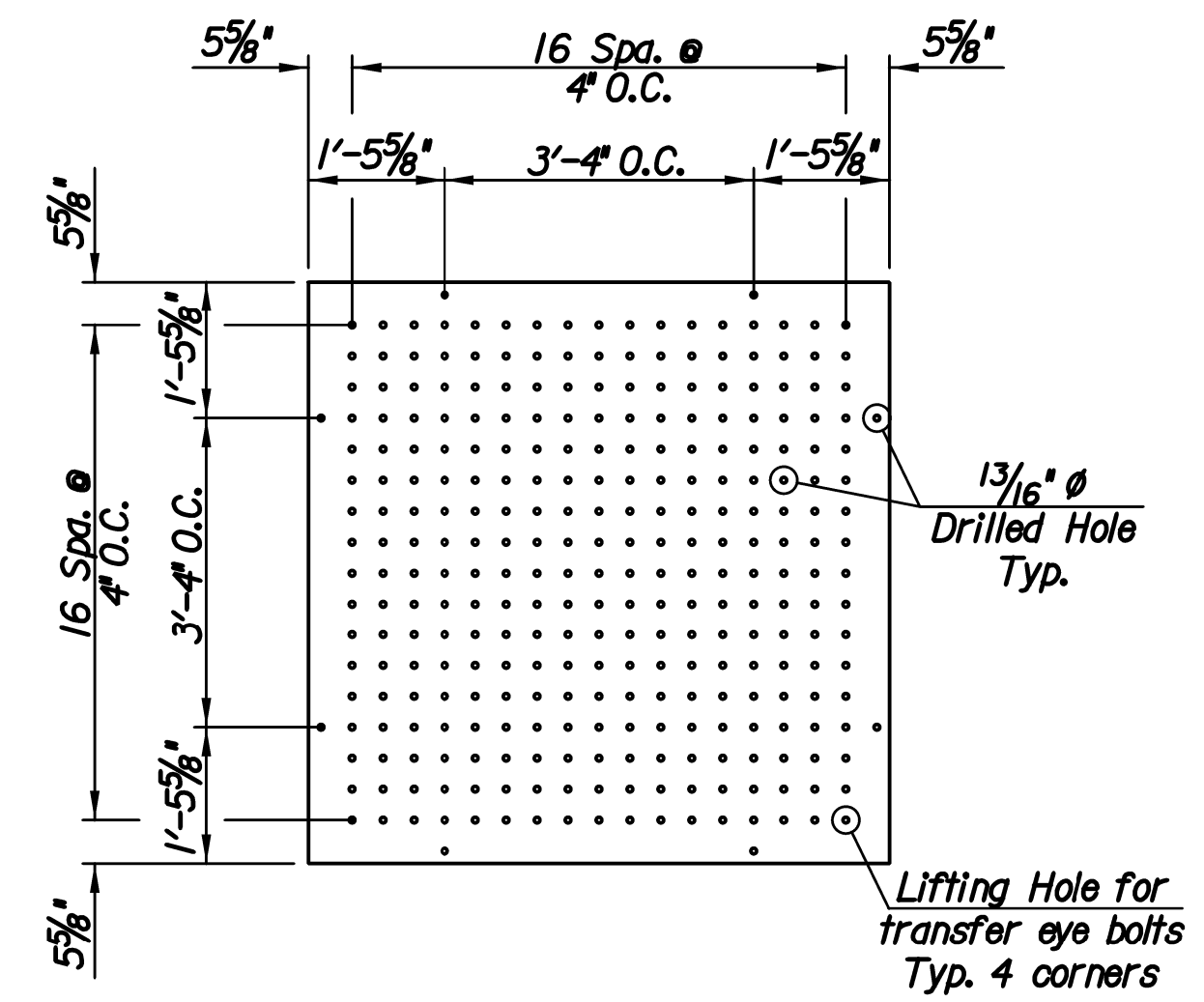


SINGLE ART BASE
Isometric



STEEL PLATE DETAIL
6'-3/4" x 6'-3/4" x 1"

GENERAL NOTES

Provide concrete meeting City of Wichita specifications with a minimum $f'c=4$ ksi at 28 days.

Reinforcing steel shall meet the requirements of ASTM 615 with $f_y=60$ ksi.

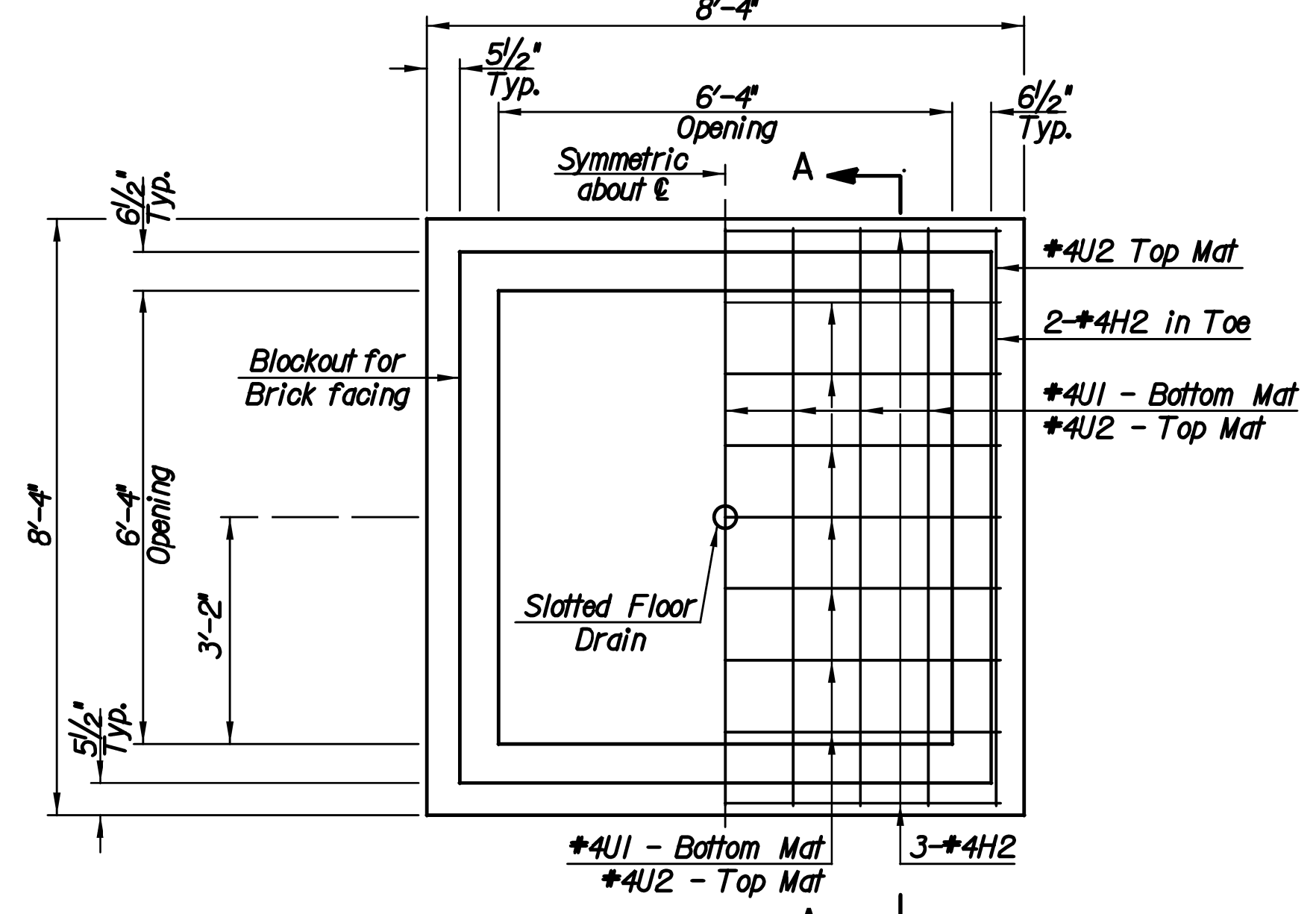
Provide structural steel for plates and rolled shapes meeting City of Wichita specifications with a minimum $f_y=50$ ksi. Plate, rolled sections, and other visible hardware to be powdercoat black. Powdercoat specifications shall be approved by Landscape Architect.

All steel fasteners shall comply with ASTM A 307 and fasteners shall comply with ASTM A 563.

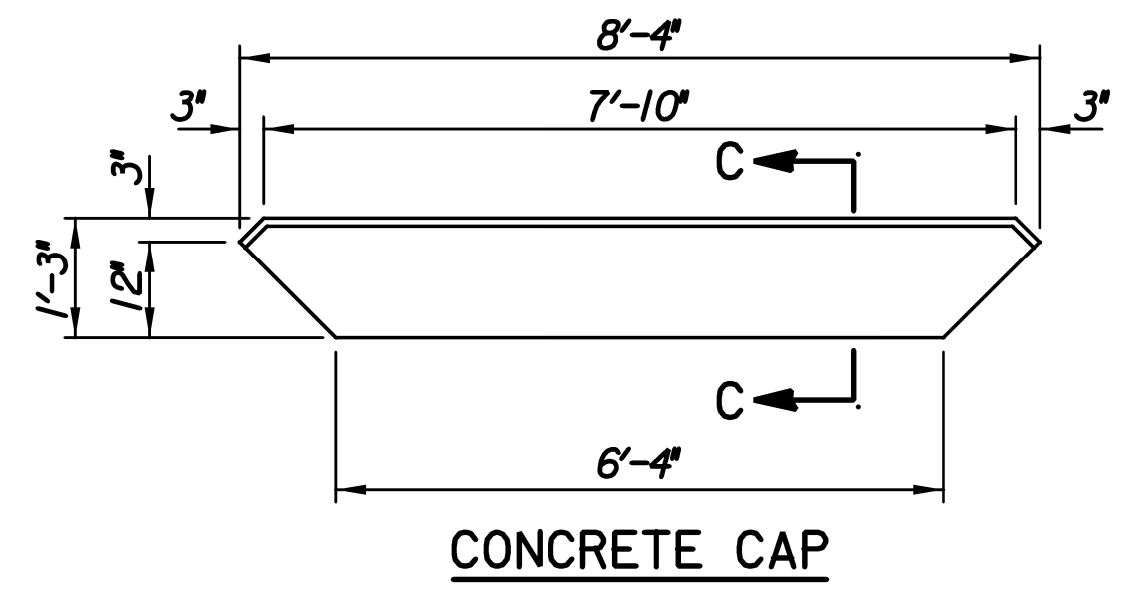
Slotted floor drain to be Neenah Foundry R-4380 Series or approved equal.

Stainless steel expansion anchors shall be Hilti KWIK Bolt 3 SS 304 or approved equal.

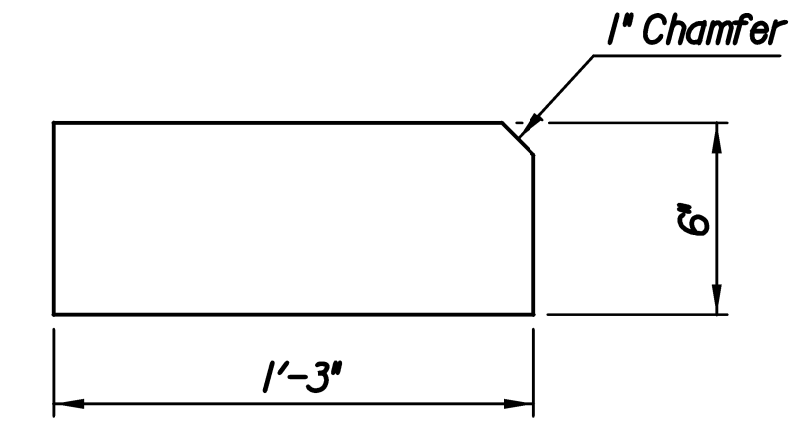
Top of the art base shall be set level.



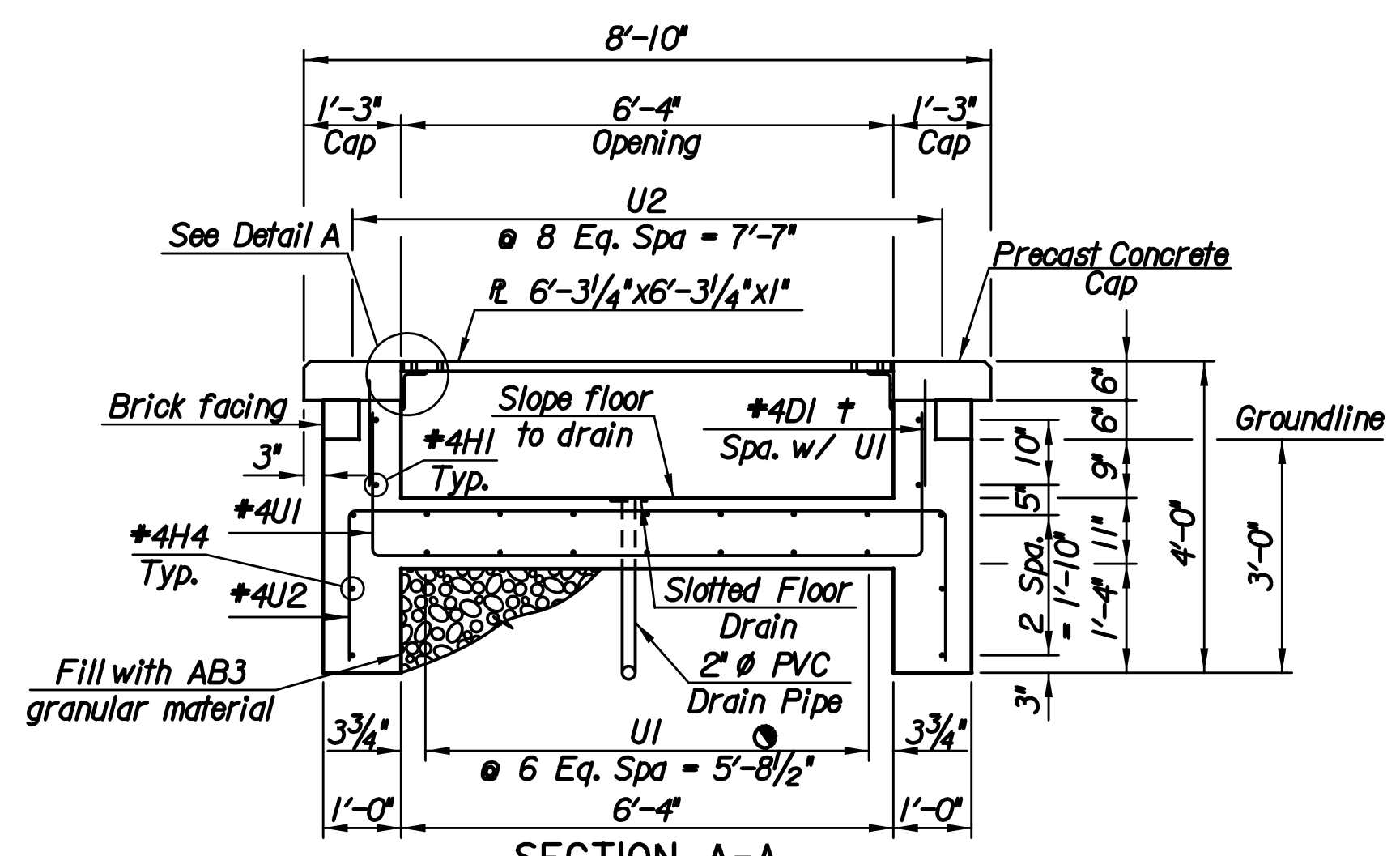
PLAN A
Single Opening Concrete Base



CONCRETE CAP

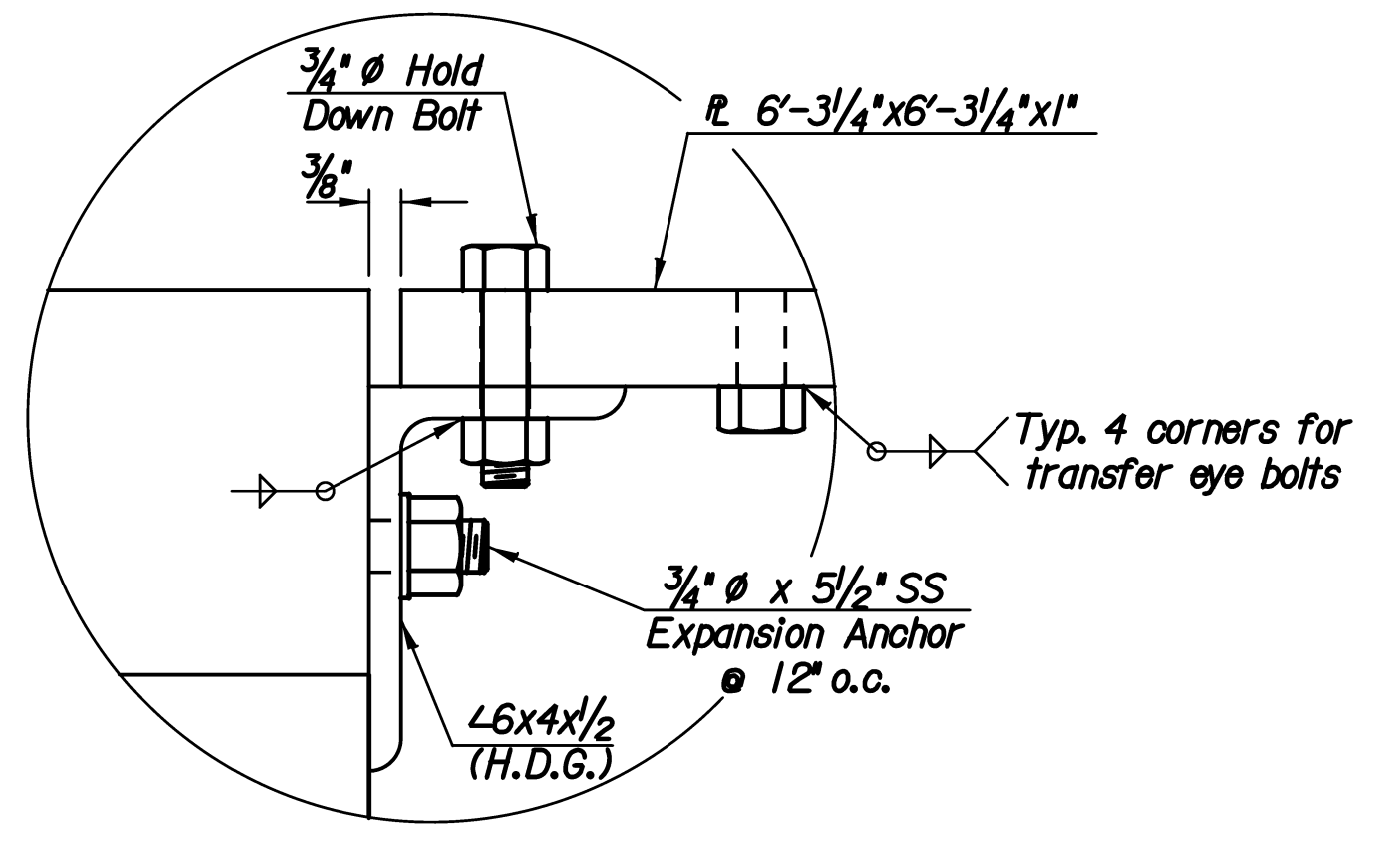


SECTION C-C

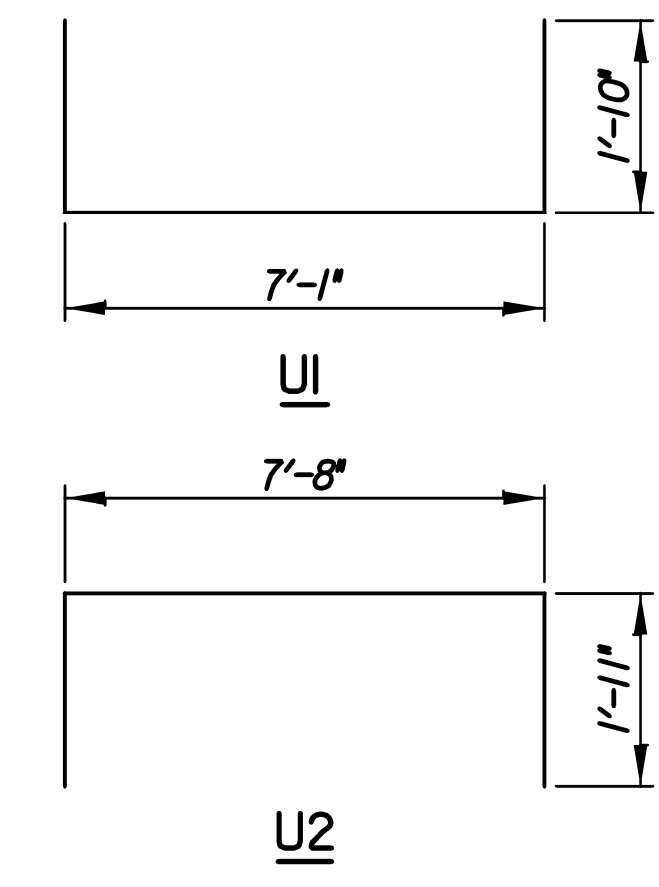


SECTION A-A

† Drill & Grout into concrete cap 4" embed
⊙ Connect to SS Node †††



DETAIL A



BENDING DIAGRAMS

All Reinforcing shall have 2" clearance unless otherwise noted.

| BILL OF MATERIALS - SINGLE * | | |
|------------------------------|----------|------|
| Item | Quantity | Unit |
| Concrete | 4.9 | C.Y. |
| Reinforcing Steel (Grade 60) | 340 | Lbs. |
| Structural Steel | 2,017 | Lbs. |

* For information only

| REINFORCING STEEL - SINGLE | | | | | | | |
|----------------------------|------|-----|-----------|------|------|-----|--------|
| Straight Bars | | | Bent Bars | | | | |
| Mark | Size | No. | Length | Mark | Size | No. | Length |
| H1 | #4 | 8 | 7'-1" | U1 | #4 | 14 | 10'-9" |
| H2 | #4 | 10 | 8'-0" | U2 | #4 | 16 | 11'-6" |
| DI | #4 | 28 | 1'-4" | | | | |

| | | | |
|---|----------|---------|------------|
| No. | Revision | By | Date |
| 17TH STREET AND OLIVER INTERSECTION | | | |
| ART FOUNDATION, SINGLE | | | |
| GARY JANZEN, P.E.-CITY ENGINEER CITY OF WICHITA PROJECT NO. 472-85214 | | | |
| PROFESSIONAL ENGINEERING CONSULTANTS, P.A. 303 SOUTH TOPEKA WICHITA, KS 67202 316-262-2691 www.pec1.com | | | |
| Designed by | CWPJ | Job No. | 15081 |
| Drawn by | MLB | Date | Oct., 2017 |

Plotted By: cwp Date: 11/29/2017 4:34:50 PM
 FILE: U:\Wichita-Civil\2015\15081\000\Tran\Bridg\DCN Project\15081-Single Art Base-39.dgn