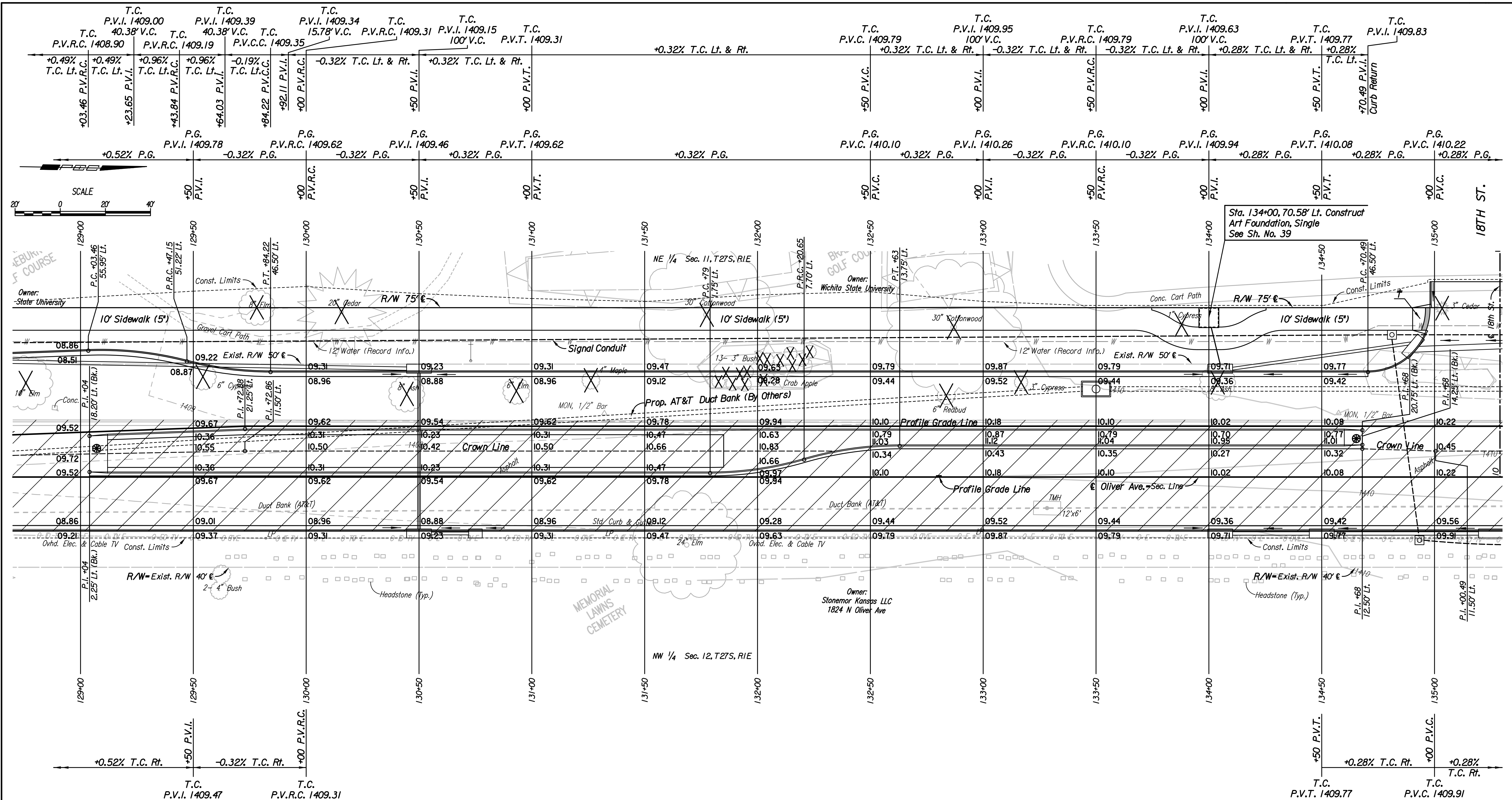


Plotted By: sheldond.bln@date: 12/14/2017 3:56:40 PM
 FILE: U:\Wichita-Civil\2015\1508\1000\Trans\Road\DCN Project\Plan\15081-Plan_129.dgn



BM #205 - Chiseled square on west side of sidewalk on WSU golf course at mid point of curve 3 poles north of 17th St. and Oliver Ave. pole #a22282. 134.69' Lt. & Sta. 131+76.18 NAVD88 Elev.=1409.77

Utilities
 Cable TV
 Power
 Telephone
 Cox Communications
 Westar Energy
 AT&T, Wichita Central Unit

- LEGEND**
- Pavement Removal
 - Wheelchair Ramp w/ Detectable Warning
 - 8' Median Ramp Nose Section
 - Denotes trees to be removed

Revision		By	Date
17TH STREET AND OLIVER INTERSECTION			
PLAN			
STA. 129+00 TO STA. 135+00			
GARY JANZEN, P.E.-CITY ENGINEER CITY OF WICHITA PROJECT NO. 472-85214			
PEC PROFESSIONAL ENGINEERING CONSULTANTS, P.A. 303 SOUTH TOPEKA WICHITA, KS 67202 316-262-2691 www.pec1.com			
Designed by	CKC	Job No.	15081
Drawn by	CP, SVB	Date	Dec., 2017
			Sh. 8 of 107