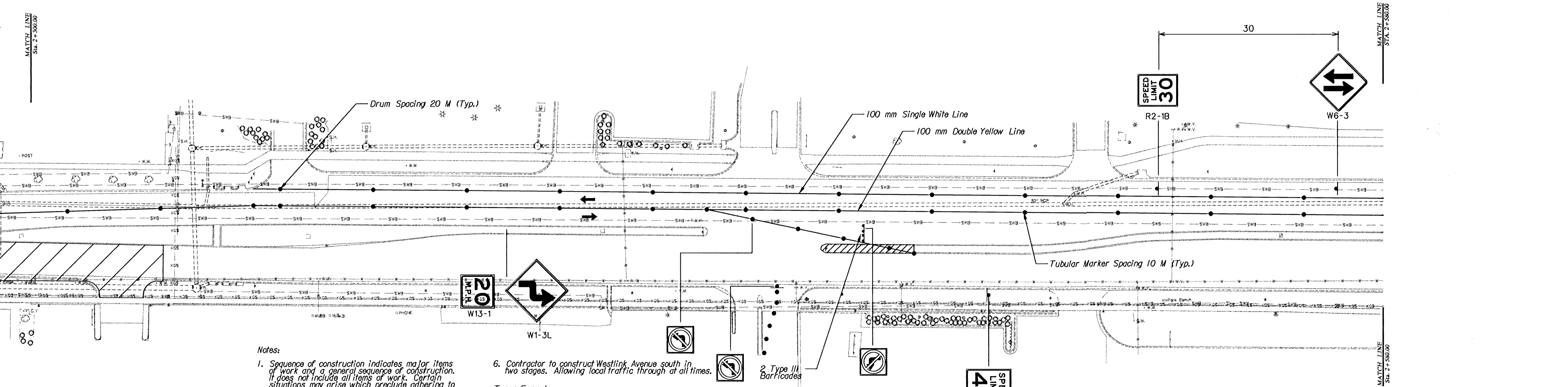
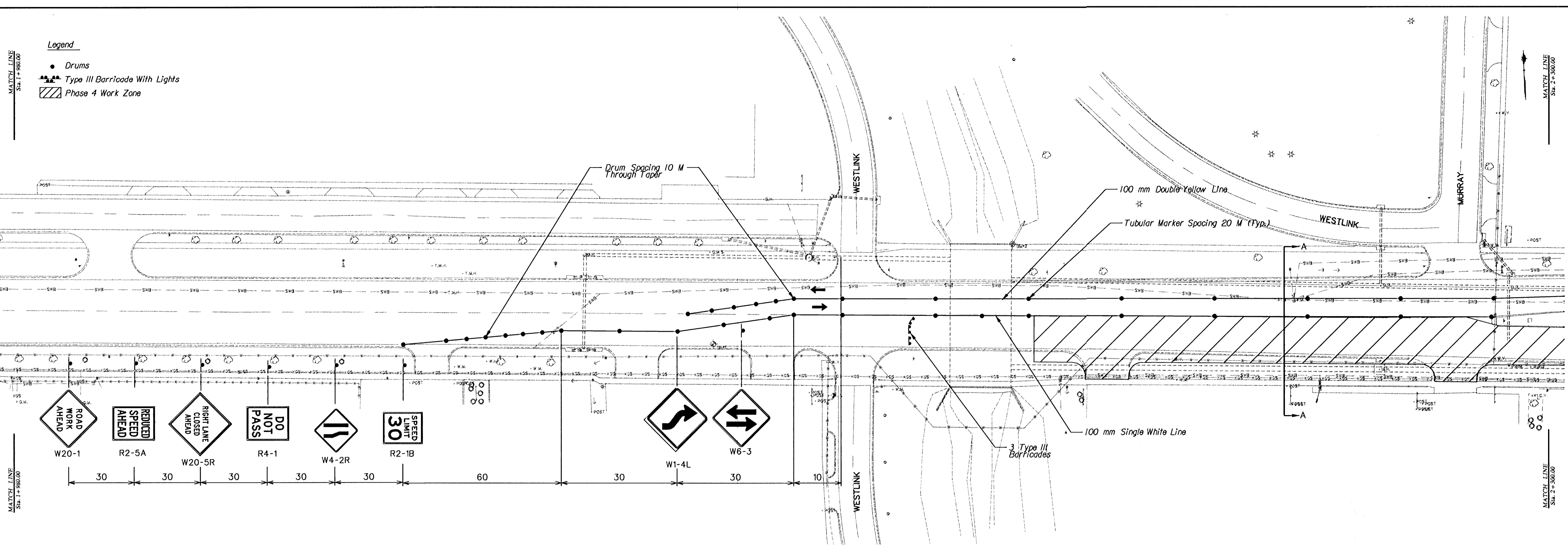
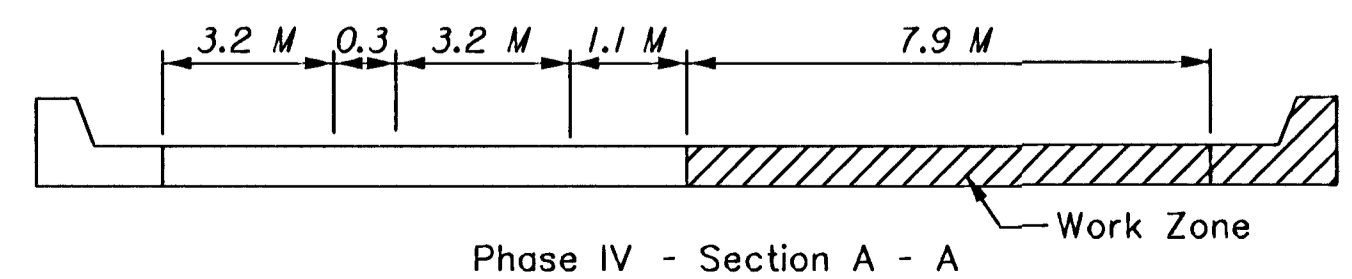


- Legend**
- Drums
  - Type III Barricade With Lights
  - ▨ Phase 4 Work Zone



- Notes:**
1. Sequence of construction indicates major items of work and a general sequence of construction. It does not include all items of work. Certain situations may arise which preclude adhering to the original construction sequences. Should this occur, the contractor may submit to the engineer an alternate plan for approval.
  2. Remove all existing traffic control devices which conflict with construction signing and pavement markings.
  3. Contractor to build a temporary 3:1 slope along the centerline through the reconstruction area at the end of each work day.
  4. Contractor to build a temporary 3:1 slope along the edge of pavement for the right turn lane at the east end of the project at the end of each day.
  5. Contractor not to close more than two (2) side roads consecutively at a time.
  6. Contractor to construct Westlink Avenue south in two stages. Allowing local traffic through at all times.
- Taper Formula**  
 $L = SxW$  for speeds of 45 MPH or more.  
 $L = WxS^2$  for speeds of 40 MPH or less.  
 60
- Where  
 $L$  = Minimum length of taper.  
 $S$  = Numerical value of posted speed prior to work or 65th percentile speed.  
 $W$  = Width of offset.



CITY OF WICHITA CENTRAL AVENUE IMPROVEMENTS	
PHASE 4 TRAFFIC CONTROL Sta. 1+980.000 - Sta. 2+580.000	
WICHITA	KANSAS
DESIGNED BY <b>B.A.L.</b>	DRAWN BY <b>M.P.M.</b>
CHECKED BY <b>J.R.L.</b>	DATE <b>1/20/03</b>
SCALE <b>1:400</b>	SHEET NO. <b>45</b>