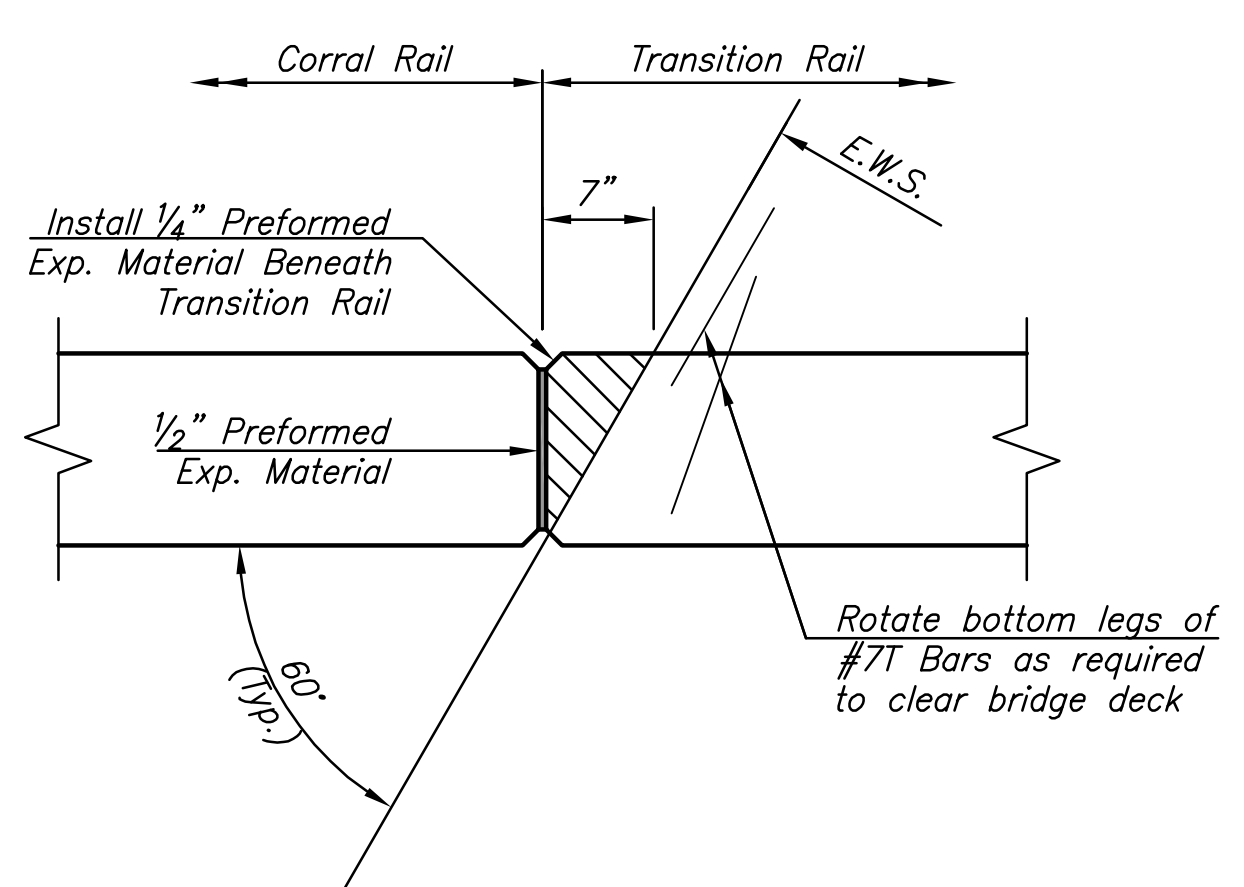


STATE	PROJECT NO.	YEAR	SHEET NO.	TOTAL SHEETS
KANSAS	87 N-0615-01	2017	41	183

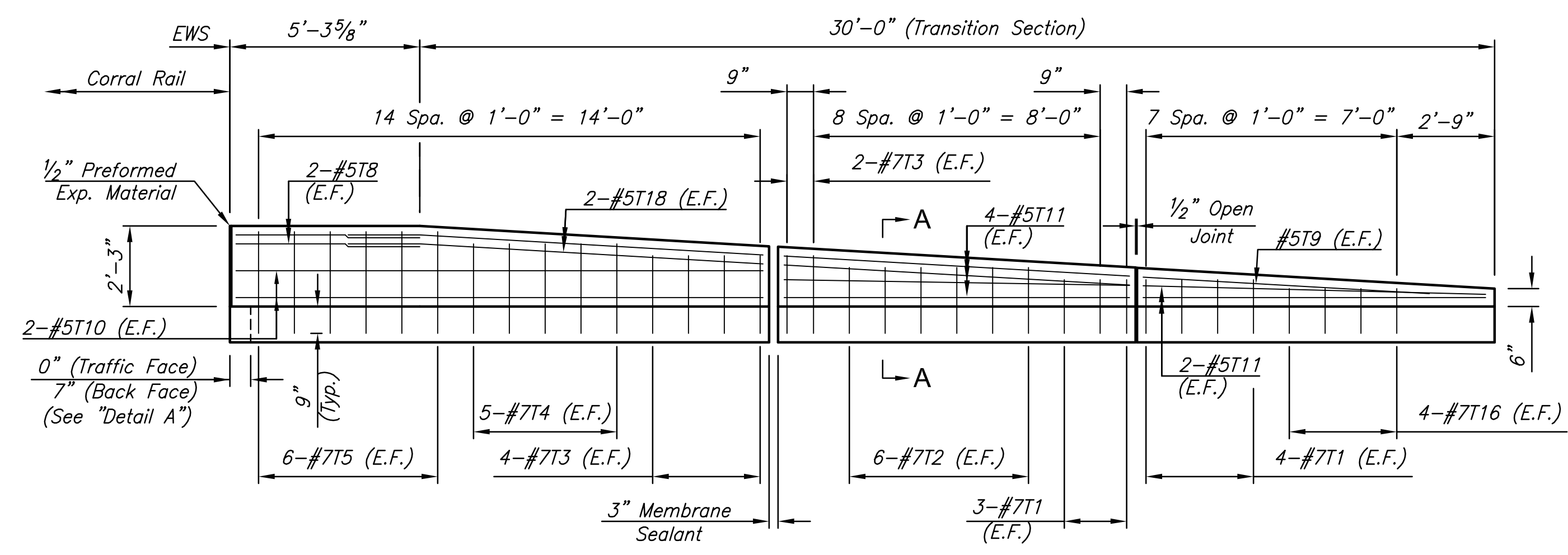


**GENERAL NOTES**

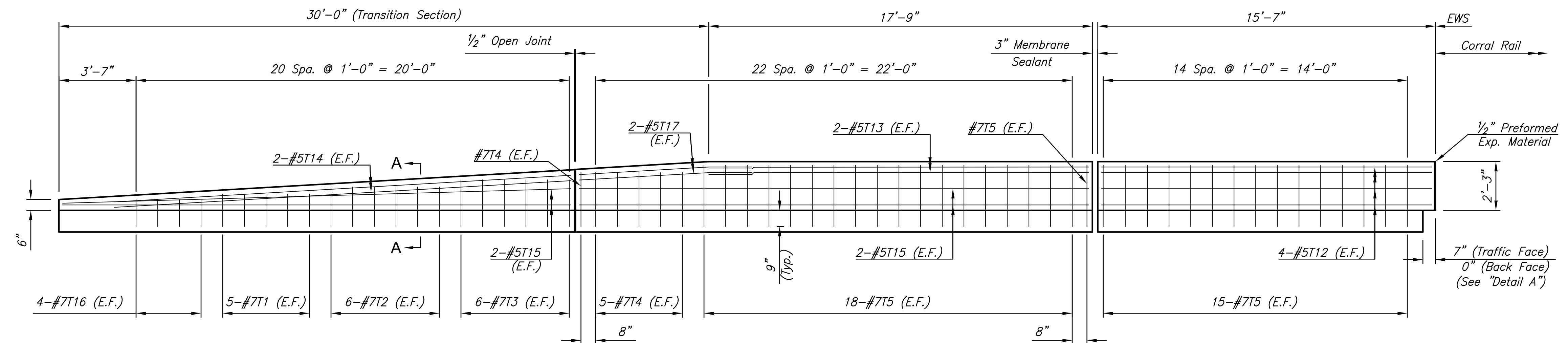
- UNIT STRESSES:**  
Concrete  $f'_c = 4 \text{ ksi}$   
Reinforcing Steel (Epoxy-Coated)  $f_y = 60 \text{ ksi}$
- The Transition Rail shall be constructed such that the Traffic Face of the Rail is 24'-0" from the  $\varnothing$  Proposed Improvements.
  - Quantities shown on this sheet are provided for information only.
  - All materials, labor, and equipment required for the construction of Transition Rail shall be considered subsidiary to the bid item "Concrete Safety Barrier, Special".



**DETAIL A**  
(Typical Plan at Transition Rail to Corral Rail Joint)

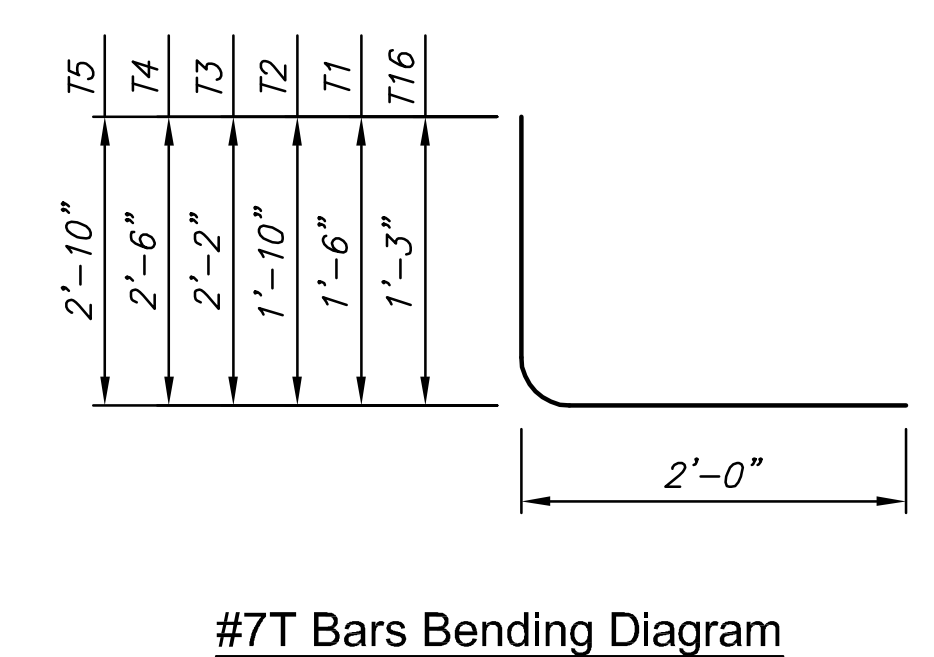


**APPROACH SLAB TRANSITION RAIL ELEVATION**  
(Along Traffic Face, Phase 2-North Approach Slab)  
Scale: 1"=3"



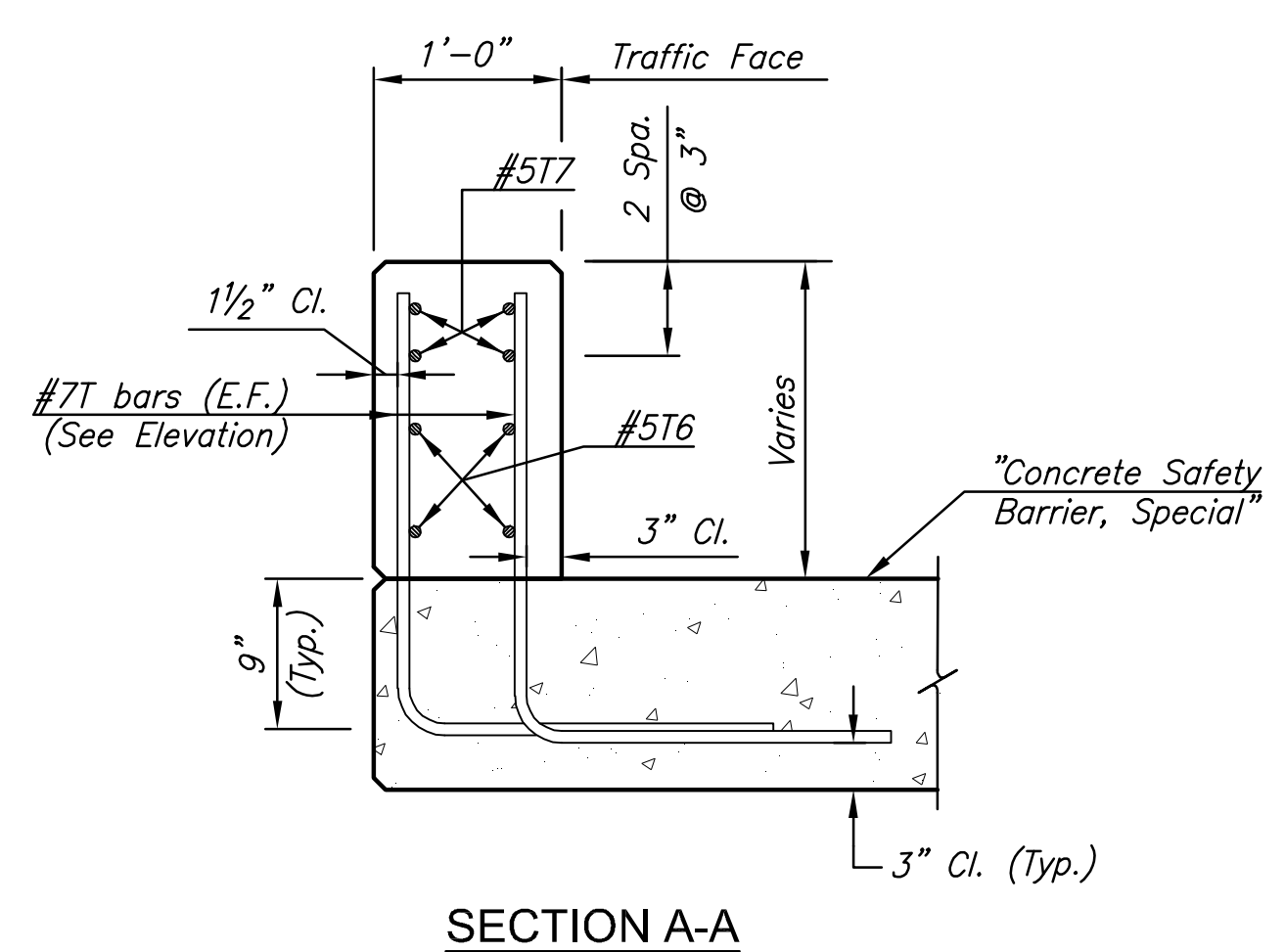
**APPROACH SLAB TRANSITION RAIL ELEVATION**  
(Along Traffic Face, Phase 2-South Approach Slab & Phase 3-North Approach Slab)  
Scale: 1"=3"

BILL OF REINFORCING STEEL (Grade 60, Epoxy-Coated)									
Straight Bars					Bent Bars				
T8	#5	4	5'-2"	T1	#7	34	3'-6"		
T9	#5	2	8'-0"	T2	#7	36	3'-10"		
T10	#5	4	8'-6"	T3	#7	36	4'-2"		
T11	#5	12	9'-7"	T4	#7	34	4'-6"		
T12	#5	16	15'-3"	T5	#7	148	4'-10"		
T13	#5	8	17'-6"	T16	#7	24	3'-3"		
T14	#5	8	21'-1"						
T15	#5	16	23'-6"						
T17	#5	8	8'-0"						
T18	#5	4	11'-7"						



**LEGEND**  
NF = Near Face  
FF = Far Face  
EF = Each Face

APPROACH SLAB TRANSITION RAIL QUANTITIES (Provided For Information Only)		
Item Location	Concrete (Cu. Yds.)	Reinforcing Steel (Epoxy-Coated)(Lbs.)
Approach Rails	10.6	4,044



STREET IMPROVEMENTS FOR  
**127TH STREET EAST**  
FROM 13TH STREET NORTH TO 21ST STREET NORTH

©2017 MKEC Engineering  
All Rights Reserved  
www.mkec.com  
These drawings and their contents, including, but not limited to, all concepts, designs, & ideas are the exclusive property of MKEC Engineering (MKEC), and may not be used or reproduced in any way without the express consent of MKEC.

**CONCRETE SAFETY BARRIER TRANSITIONS**

PROJECT NO.	472-85158	
DATE	11/29/17	
SCALE	AS SHOWN	
DESIGNED	DRAWN	CHECKED
KJS	RAM	KJS

SHEET NO.  
41 OF 183