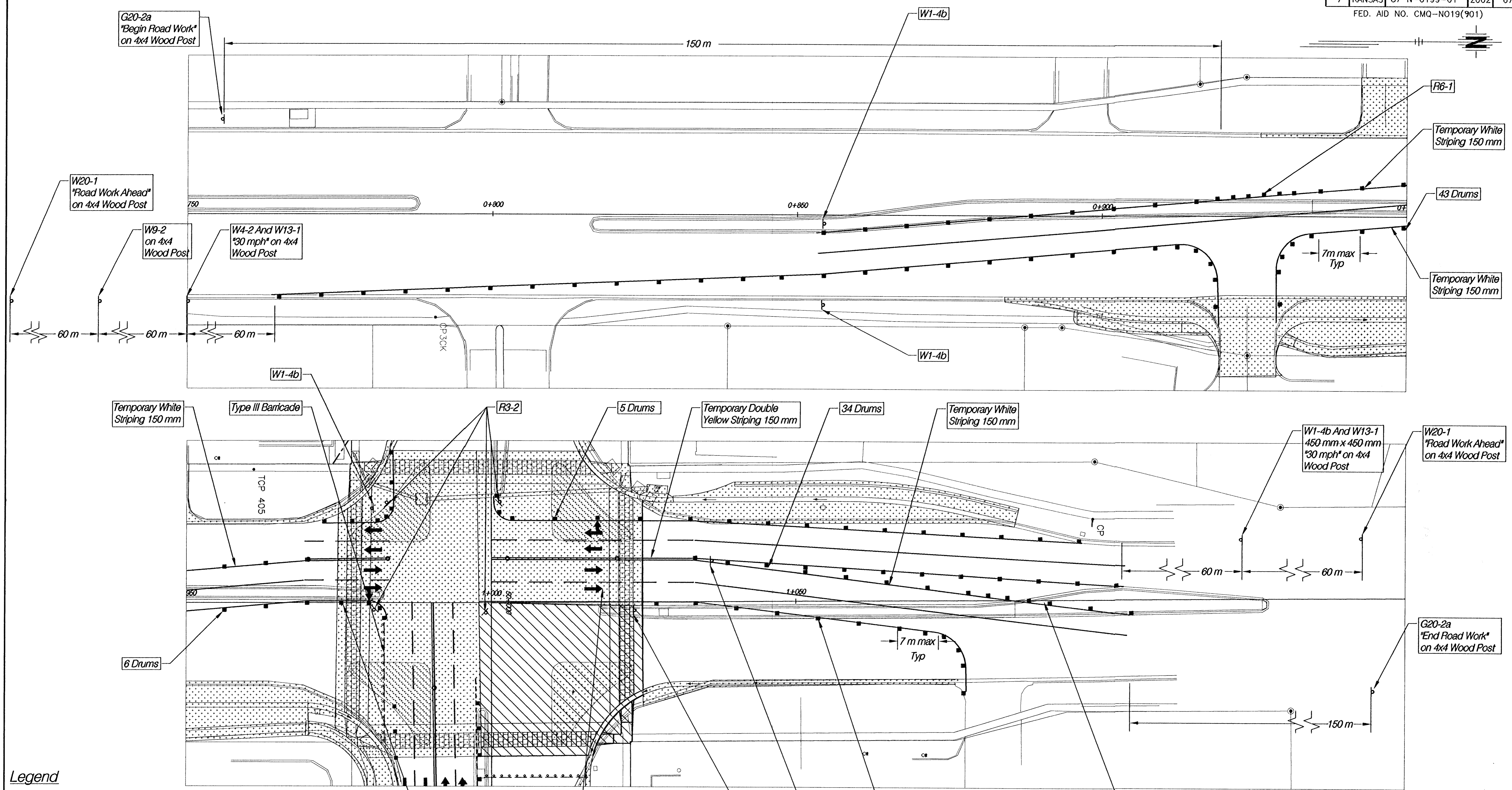


FHWA REG. NO.	STATE	PROJECT NO.	YEAR	SHEET NO.	TOTAL SHEETS
7	KANSAS	87 N-0199-01	2002	67	158

FED. AID NO. CMQ-N019(901)



- Legend**
- Area Under Construction In Phase 7
Northeast 1/4 of N. 21st STREET and N. ROCK ROAD.
 - Area Previously Constructed (Phases 1,2,3,4,5 & 6)
 - Type III Barricade
 - Channelizing Device (Drum)
 - Tubular Marker

Pavement Markings Are For Information Purposes Only And Are Not To Be Installed

N. ROCK ROAD
TRAFFIC CONTROL PLAN - PHASE 7
STA. 0+750 - 1+150

Omaha Office
 10844 Old Mill Rd., Ste 1
 Omaha, NE 68154
 Phone: (402) 333-5792
 Fax: (402) 333-2248

Designed By: GWE Checked By: RJK
 Drawn By: HS Date: 03-25-2002 Job No. 55-70-2003