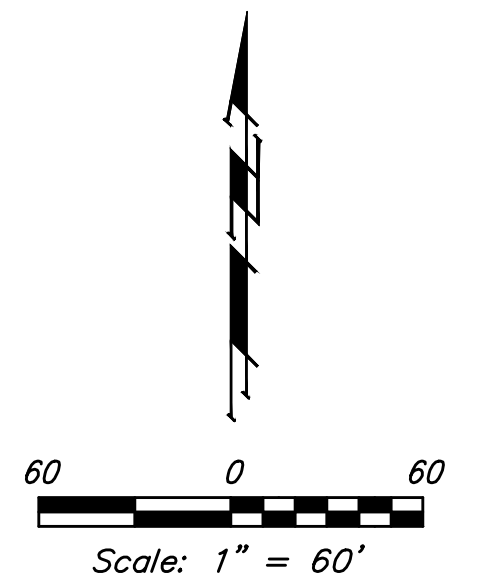
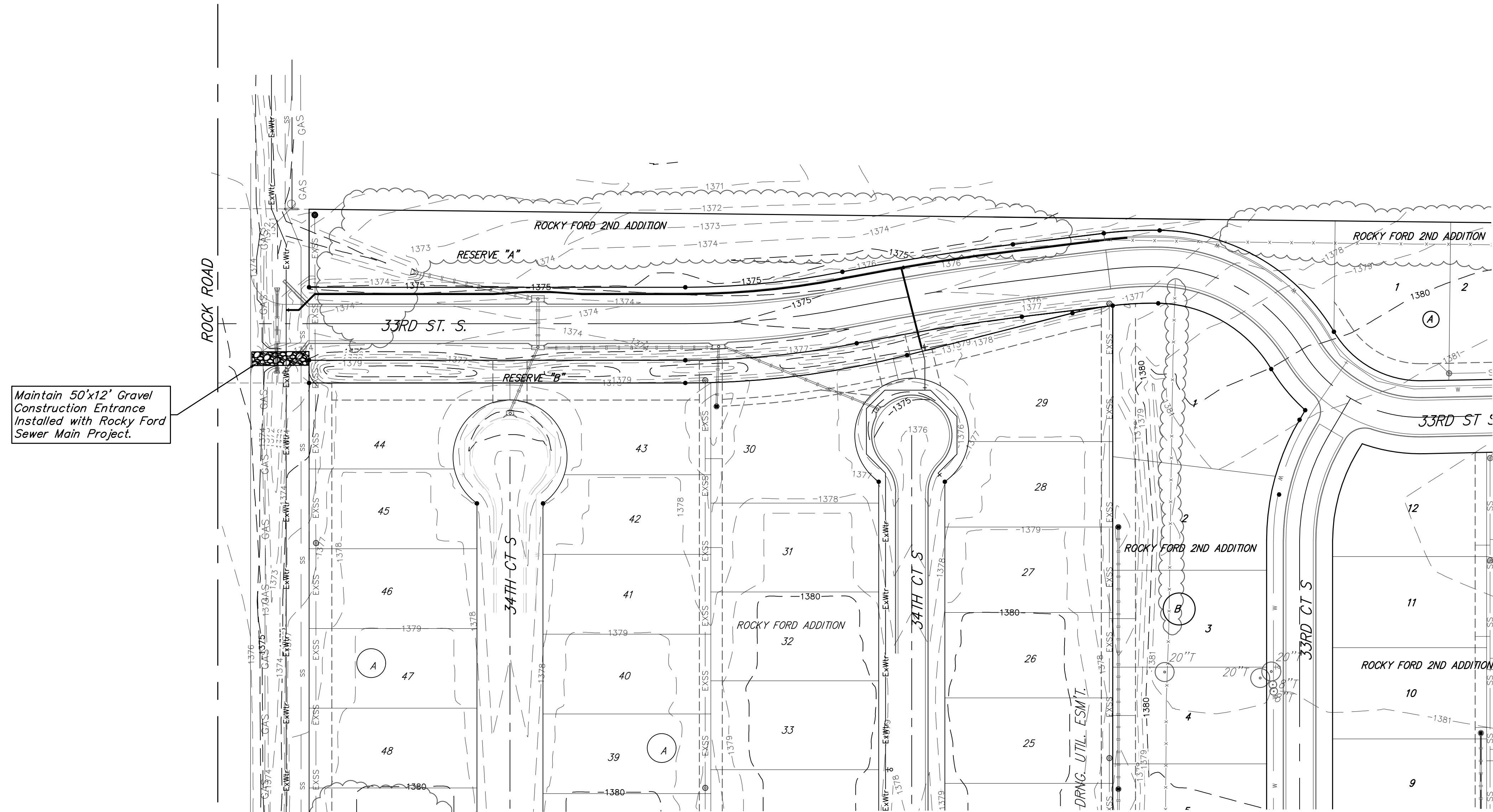


BENCHMARK:
 City of Wichita Benchmark Disk at
 South End of Hubguard on the SW
 Cor. of R.C.B.C., West Side of Rock
 Road, 706' North-northwest of the
 Northwest Corner of Lot 44, Block
 A, Rocky Ford Addition.
 Elev. = 1368.14 NAVD88

"□" on Top of Curb by Fire
 Hydrant. South of Concrete Drive
 at 2800 S. Rock Road.
 Elev. = 1379.84 NAVD88



Existing Ground - - - - - 1364 - - - - -



Maintain 50'x12' Gravel
 Construction Entrance
 Installed with Rocky Ford
 Sewer Main Project.

- NOTES:**
1. Contractor shall make sure all erosion control is in place before project is accepted. This plan represents the minimum standard. Any additional erosion control measures shall be installed by the Contractor as needed.
 2. Removal of Gravel Construction Entrance for pavement construction shall be included in bid item "Site Clearing & Restoration"
 3. This Plan is Not To Be Used As A Comprehensive Grading Plan. All Spot Elevations Are Proposed & Subject To Change.

All areas disturbed during construction shall be seeded, mulched, and fertilized as per Cover Sheet General Notes.

EROSION CONTROL MEASURE	INSTALL	MAINTAIN
CONSTRUCTION ENTRANCE (EA)	0	1

* ALL EXISTING BMPs INCLUDING CONSTRUCTION ENTRANCE, SEDIMENT BARRIERS, SILT FENCE, CUT-OFF TRENCH, AND EROSION CONTROL MAT SHALL BE MAINTAINED AND REPAIRED IF NECESSARY.



	Rocky Ford 2nd Addition
	EROSION CONTROL Water Distribution System
<small>Baughman Company, P.A. 315 Ellis St. Wichita, KS 67211 P 316-262-7271 F 316-262-0149 ENGINEERING SURVEYING PLANNING LANDSCAPE ARCHITECTURE</small>	
PROJECT NUMBER 448-90869	DESIGN DMV
REVISIONS:	DRAWN JAK
	APPROVED DATE 3/05/18
	SCALE Noted
	SHEET 5 OF 12