

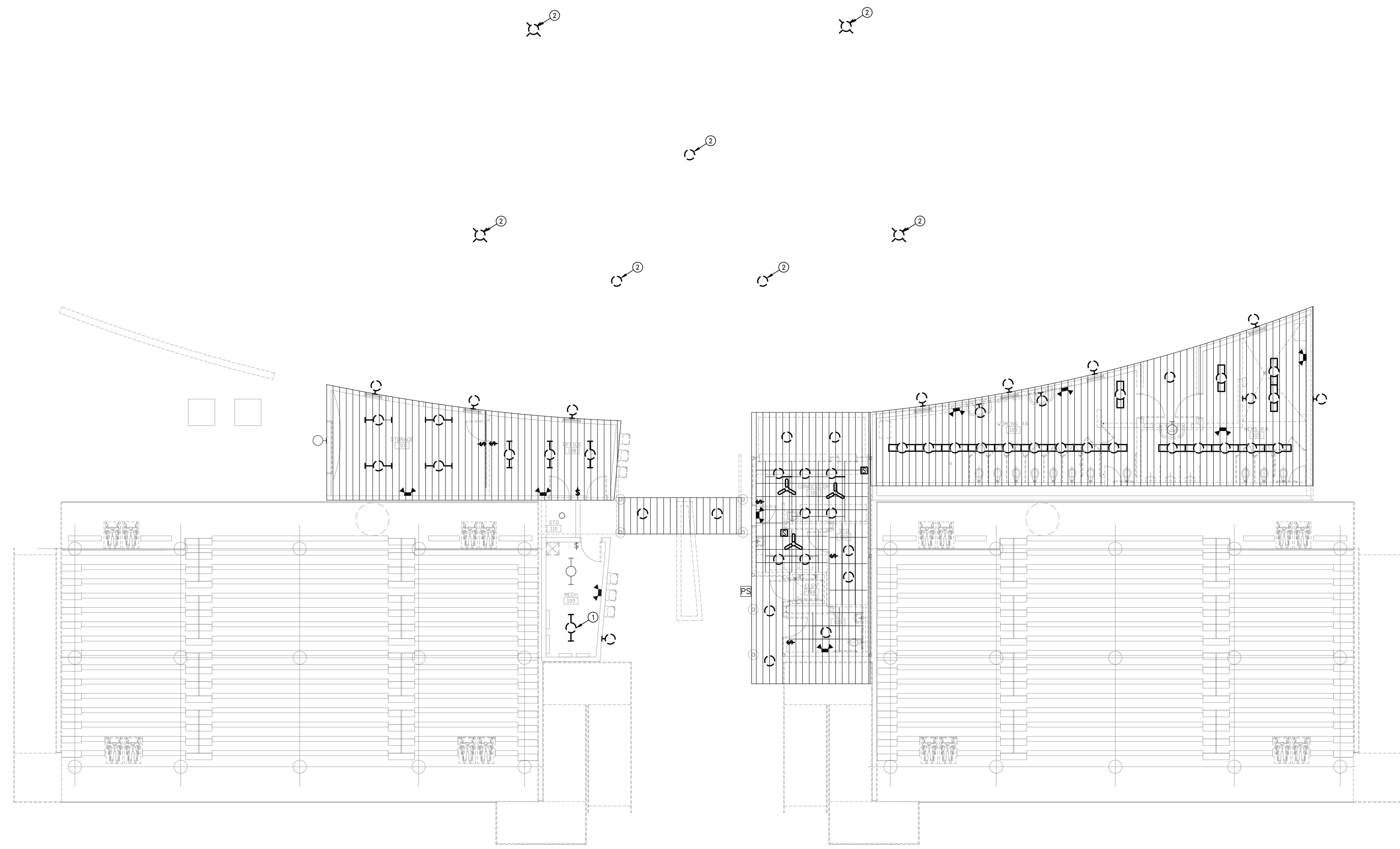
J:\PROJECTS\2013\1701010567\_C001\_STRYKER\_170607\_CADSHOTS\01\_BLDG\_MEP\STADIUM\_PACKAGE\ELECTRICAL\170607\_LIGHTING\_PLAN.DWG  
 C:\OTD\01\mkec\mkec\mep\1701010567.dwg

**GENERAL NOTES**

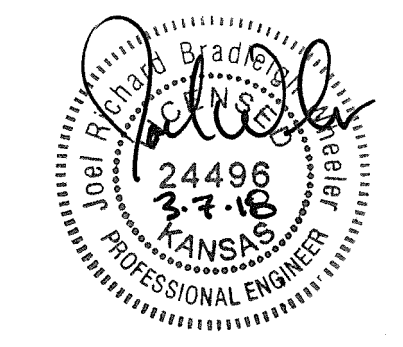
1. DO NOT REMOVE OR DISCONNECT ANY MAJOR MECHANICAL OR ELECTRICAL ITEMS (ELECTRICAL EQUIPMENT, CONDUITS, DEVICES, ETC.) INDICATED FOR SUCH BEFORE VERIFYING THAT SERVICES TO OTHER AREAS OF THE BUILDING WILL NOT BE AFFECTED. CONSULT BUILDING MAINTENANCE PERSONNEL OR THE ENGINEER AS NEEDED TO ASSIST IN THE DETERMINATION OF UNANTICIPATED ITEMS LOCATED DURING THE DEMOLITION PROCESS. OTHER AREAS OF THE BUILDING MUST REMAIN 100% OPERATIONAL DURING THE DEMOLITION WORK.
2. EXISTING CONDITIONS SHOWN ON THE DRAWINGS WERE TAKEN FROM ORIGINAL DOCUMENTS AND/OR FIELD OBSERVATIONS. E.C. SHALL BE RESPONSIBLE FOR VERIFICATION OF ALL EXISTING CONDITIONS. E.C. SHALL VISIT THE JOBSITE PRIOR TO BID AND VERIFY ALL EXISTING CONDITIONS.
3. REPAIR ALL WALL & FLOOR PENETRATIONS TO MAINTAIN THE REQUIRED FIRE/SMOKE RATING.
4. THE OWNER WILL BE RESPONSIBLE FOR REMOVAL OF ALL EXISTING HAZARDOUS MATERIALS ASSOCIATED WITH THIS WORK.
5. REMOVE ALL ELECTRICAL EQUIPMENT, LIGHTING DEVICES, CONDUIT, WIRING, ETC SHOWN ON THE DEMOLITION PLAN IN HEAVY DASHED LINES.
6. THE OWNER MAINTAINS RIGHT OF REFUSAL OF ALL ITEMS. IF ITEMS ARE NOT RETAINED BY THE OWNER THEY SHALL BE LEGALLY REMOVED FROM THE SITE AND DISPOSED OF BY THIS CONTRACTOR.
7. REMOVE ALL ASSOCIATED WIRING AND CONDUIT BACK TO SOURCE SERVING DEMOLISHED ELECTRICAL EQUIPMENT, RECEPTACLES, AND LIGHTING INDICATED ON PLAN. SWITCH ALL DEMOLISHED CIRCUITS TO SPARE AND UPDATE PANEL DIRECTORY WITH TYPED PANEL DIRECTORY.
8. PROVIDE ADEQUATE TEMPORARY WORK LIGHTING IN ALL AREAS DURING CONSTRUCTION PER OSHA AND G.C. REQUIREMENTS.
9. ALL FIRE ALARM, SMOKE EVACUATION, OR OTHER SAFETY SYSTEMS SHALL REMAIN OPERATIONAL DURING DEMOLITION AND CONSTRUCTION.
10. ANY SHUT DOWN OF POWER IN AREAS OF THE BUILDING NOT AFFECTED BY THE SCOPE OF THIS PROJECT SHALL BE COORDINATED WITH THE OWNER AND G.C. PRIOR TO SHUT DOWN.
11. COORDINATE DEMOLITION OF ELECTRICAL DEVICES AND EQUIPMENT AT EXISTING WALLS TO REMAIN WITH G.C. EXISTING WALLS AND SURFACES TO REMAIN SHALL BE PATCHED AND/OR PAINTED TO MATCH.

**KEYED NOTES**

1. RELOCATE EXISTING LIGHT FIXTURE TO NEW MOUNTING HEIGHT. SEE IMPROVEMENT PLANS.
2. REMOVE EXISTING POLE MOUNTED AND STATUE LIGHT FIXTURES.



**A LIGHTING DEMOLITION PLAN**  
 SCALE: 1/8" = 1'-0"  
 SCALE: 1/8"=1'-0"  
 0 2 4 8 16



INTERIOR REMODEL  
**STRYKER SPORTS**  
 WICHITA, KANSAS

©2018  
 MKEC Engineering  
 All Rights Reserved  
 www.mkec.com  
 These drawings and their contents, including but not limited to, all concepts, designs, & data are the exclusive property of MKEC Engineering (MKEC), and may not be used or reproduced in any way without the express consent of MKEC.

LIGHTING DEMOLITION PLAN		
PROJECT NO.	1701010567	
DATE	03-07-18	
SCALE	AS NOTED	
DESIGNED	DRAWN	CHECKED
CNG	CV	JRBW
NO.	REVISION	DATE
0	ISSUE FOR CONSTRUCTION	03-07-18
SHEET NO.		
SE2.1		