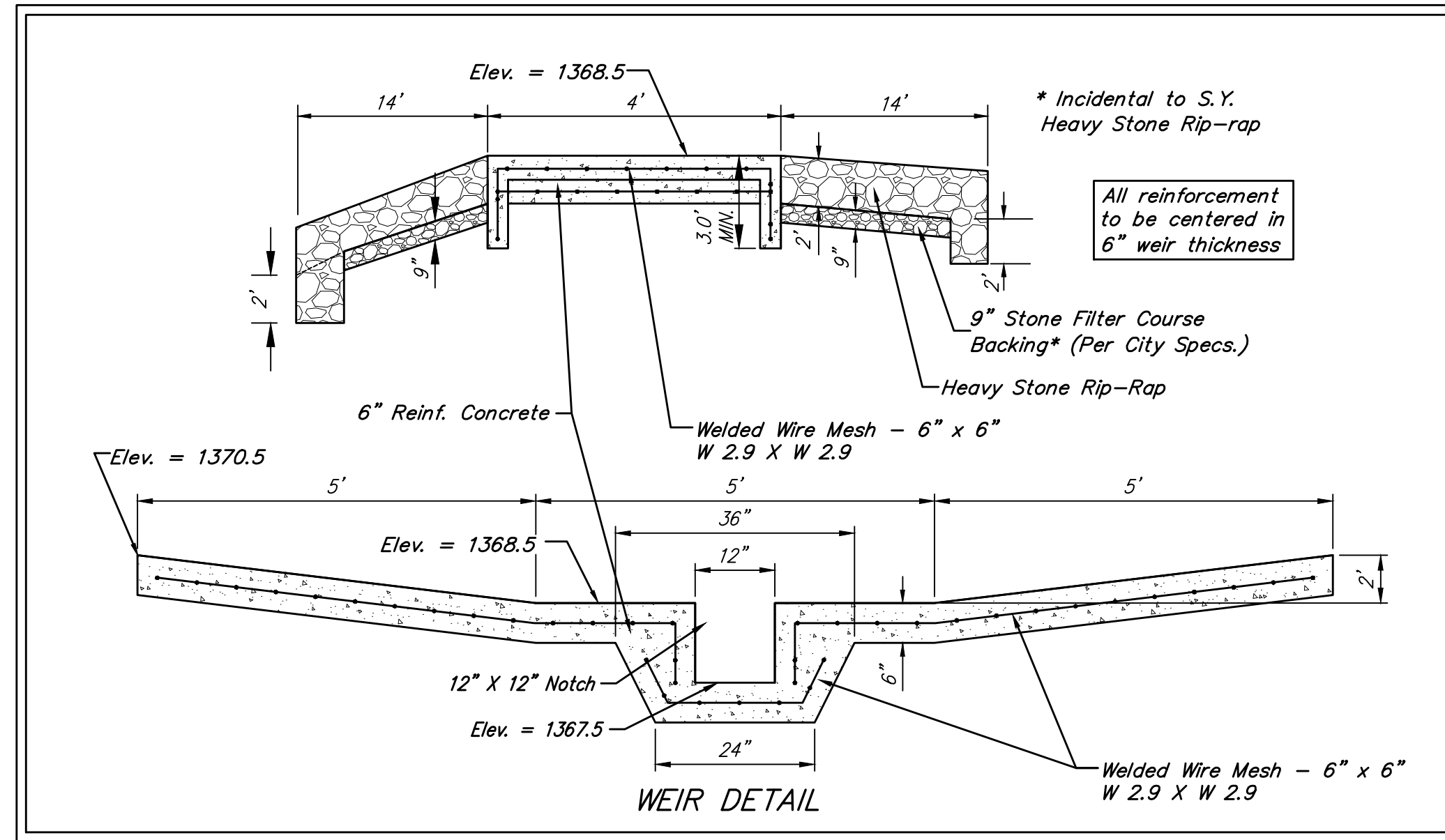
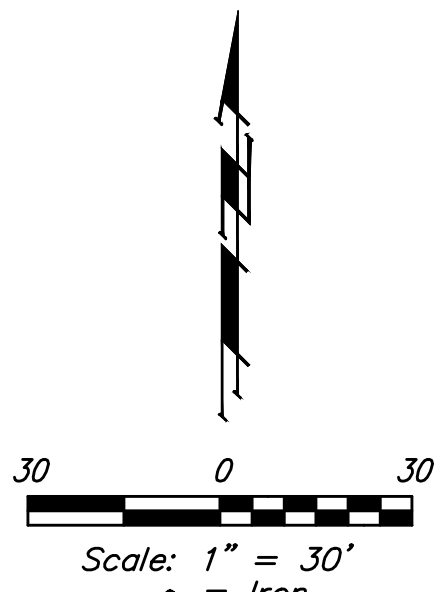
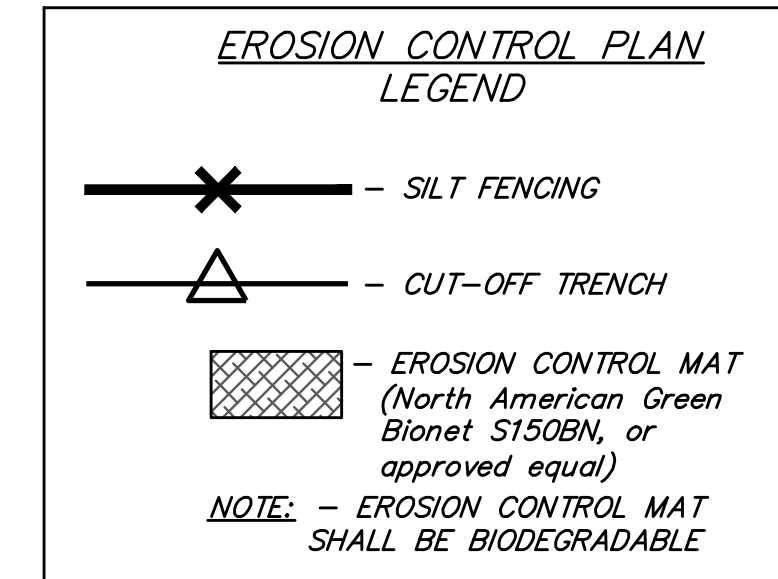
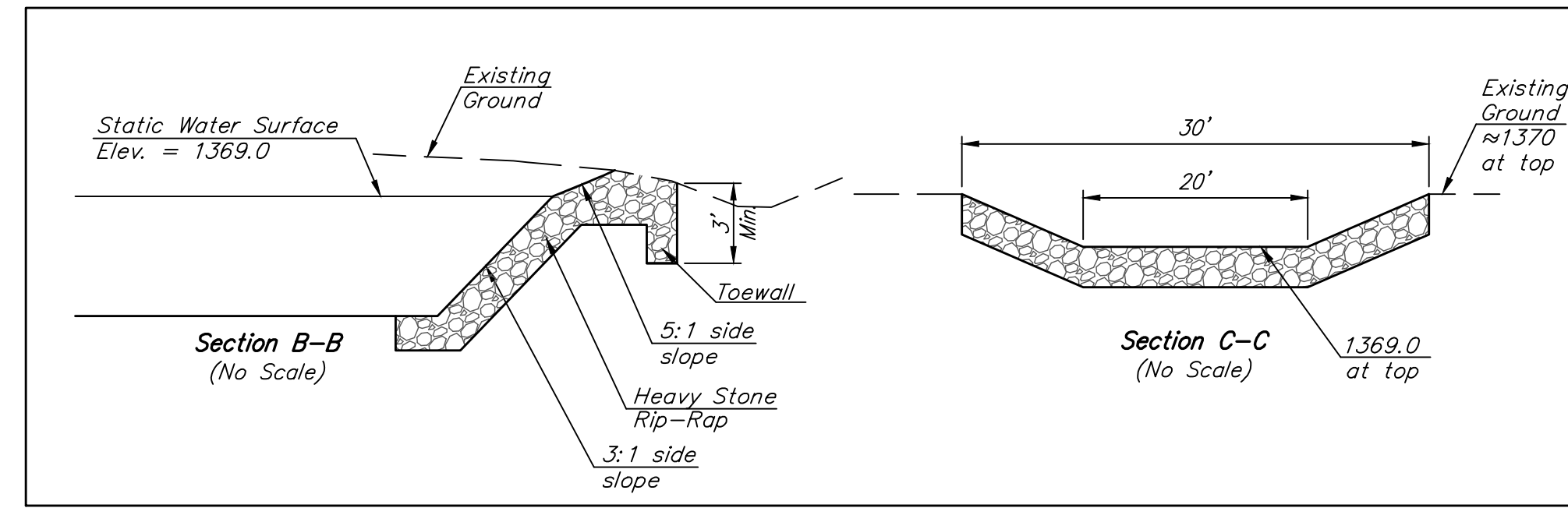
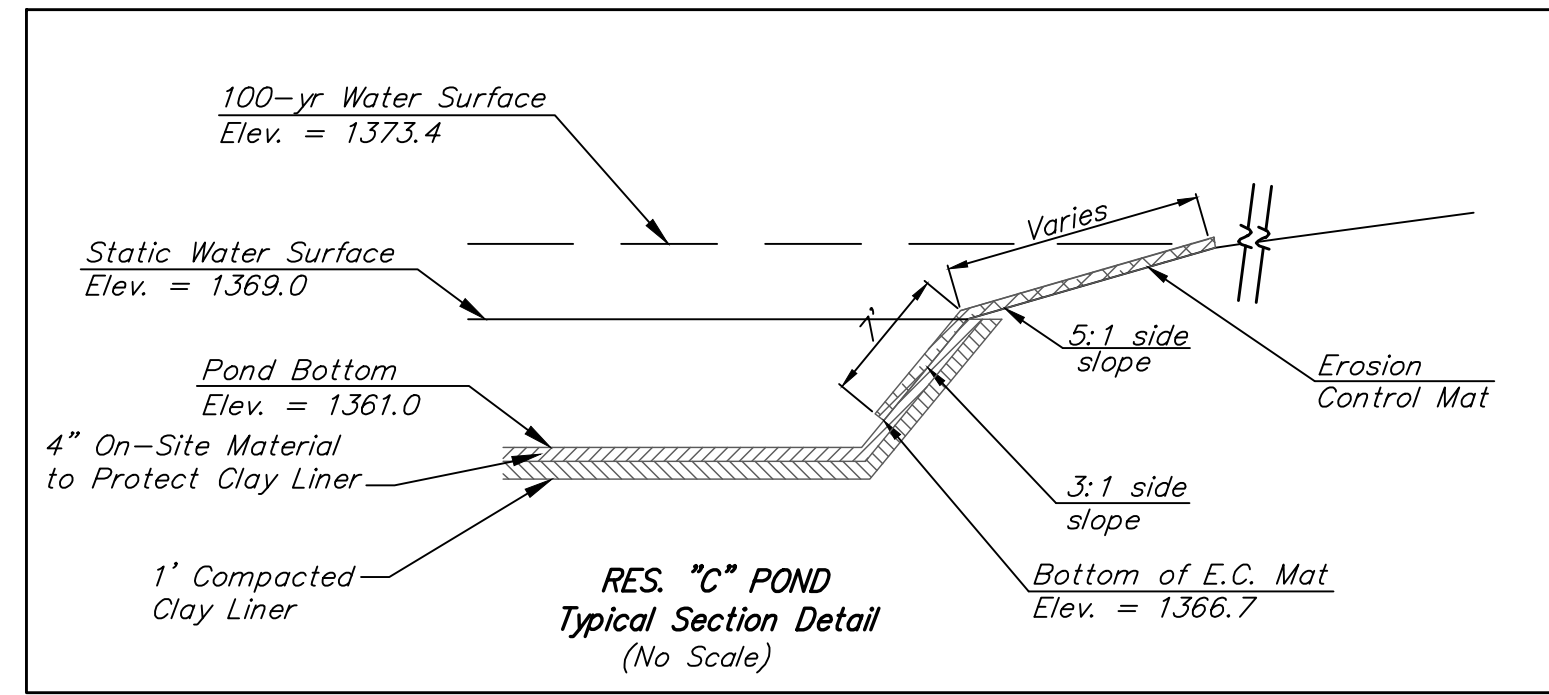
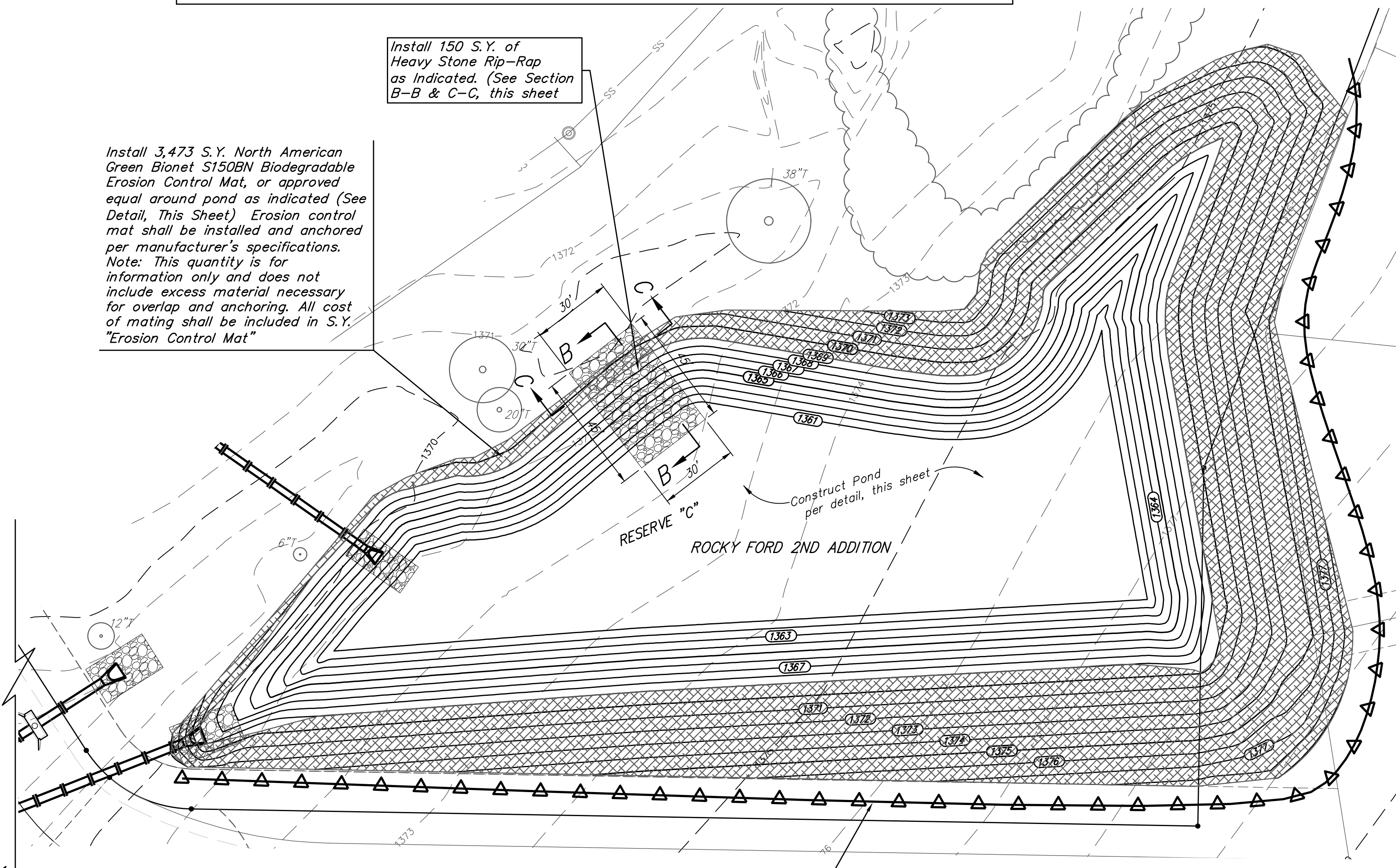


BENCHMARK:
 City of Wichita Benchmark Disk at South End of Hubguard on the SW Cor. of R.C.B.C., West Side of Rock Road, 706' North-northwest of the Northwest Corner of Lot 44, Block A, Rocky Ford Addition.
 Elev. = 1368.14 NAVD88



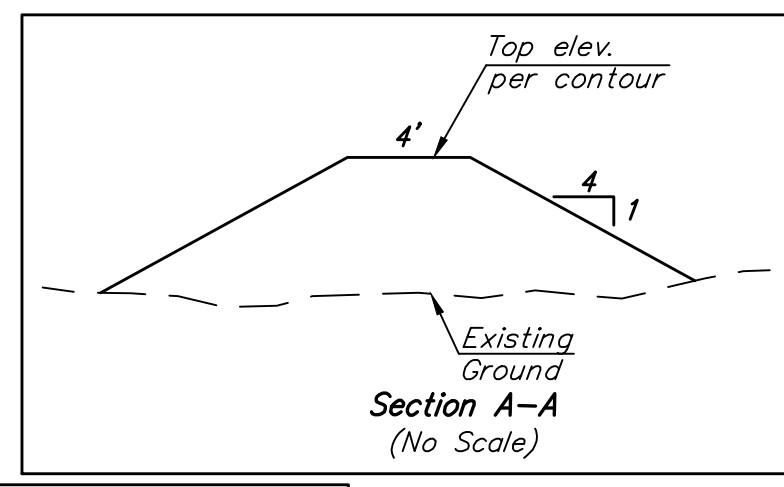
Install 150 S.Y. of Heavy Stone Rip-rap as Indicated. (See Section B-B & C-C, this sheet)

Install 3,473 S.Y. North American Green Bionet S150BN Biodegradable Erosion Control Mat, or approved equal around pond as indicated (See Detail, This Sheet) Erosion control mat shall be installed and anchored per manufacturer's specifications. Note: This quantity is for information only and does not include excess material necessary for overlap and anchoring. All cost of matting shall be included in S.Y. "Erosion Control Mat"

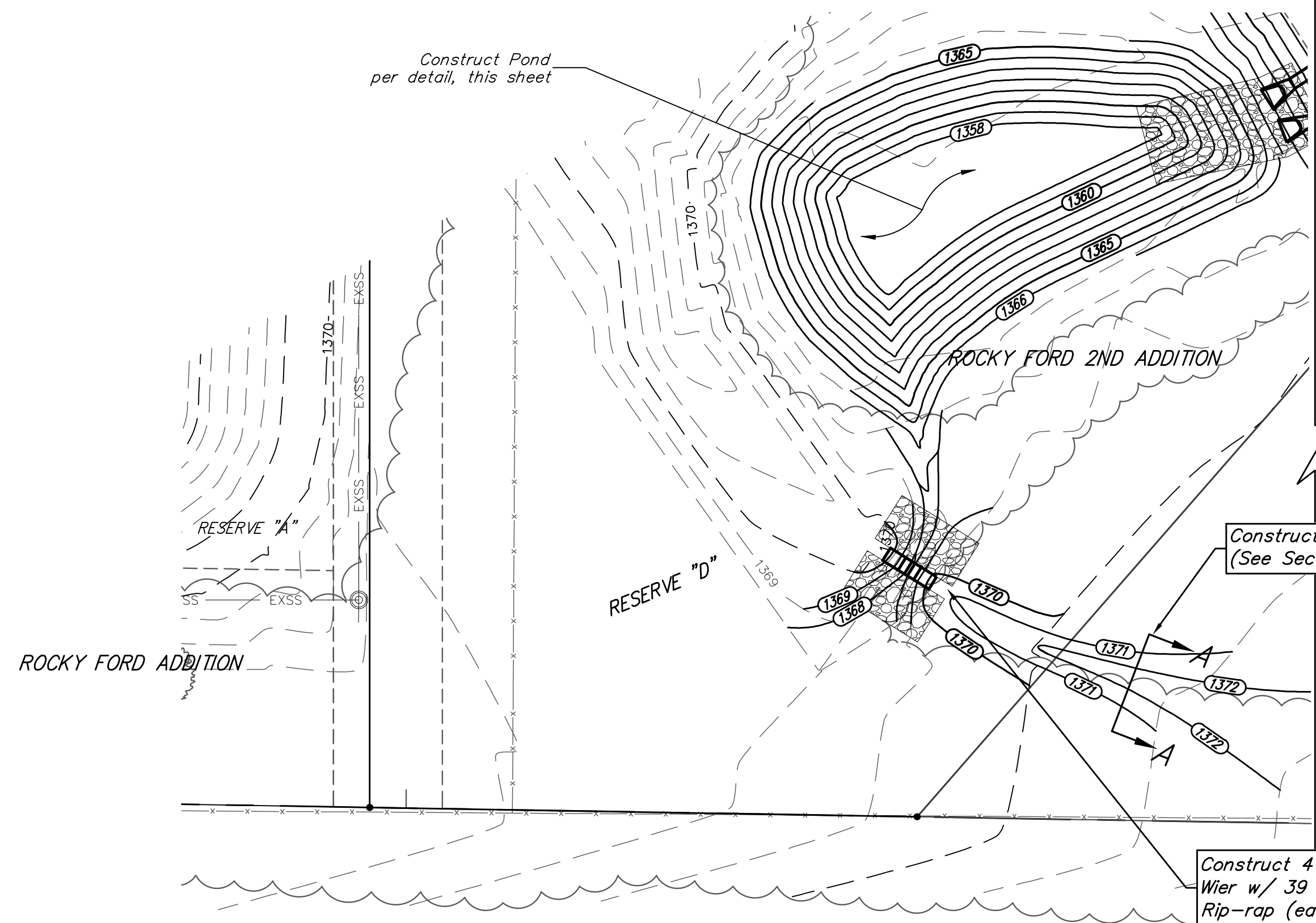
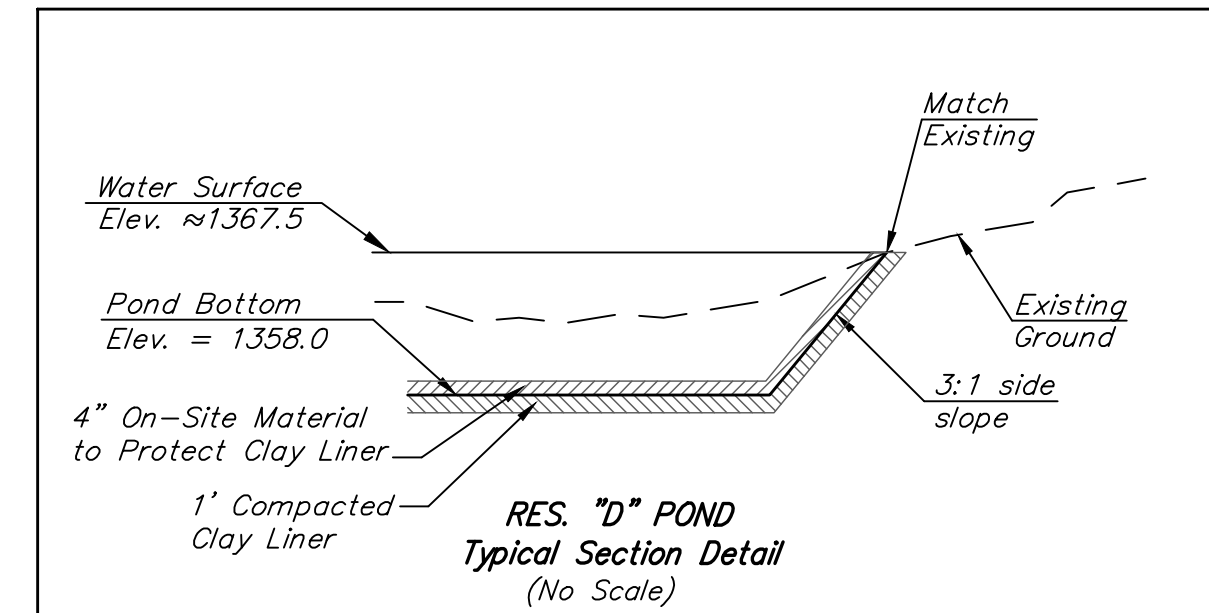


Construct 715 L.F. Cutoff Trench & Berm (See detail, this sheet).

Construct Berm as Indicated. (See Section A-A, this sheet)



Construct 4'x15' Reinforced Conc. Weir w/ 39 S.Y. Heavy Stone Rip-rap (each side) as Indicated.



		Rocky Ford 2nd Addition POND PLAN STORMWATER DRAIN #433	
		<small>Baughman Company, P.A. 315 Ellis St. Wichita, KS 67211 P 316-262-7271 F 316-262-0149 ENGINEERING SURVEYING PLANNING LANDSCAPE ARCHITECTURE</small>	
PROJECT NUMBER 468-85285	DESIGN AEG	DRAWN JAK	DATE 5/01/18
REVISIONS:	APPROVED	SCALE Noted	SHEET
			8 OF 21