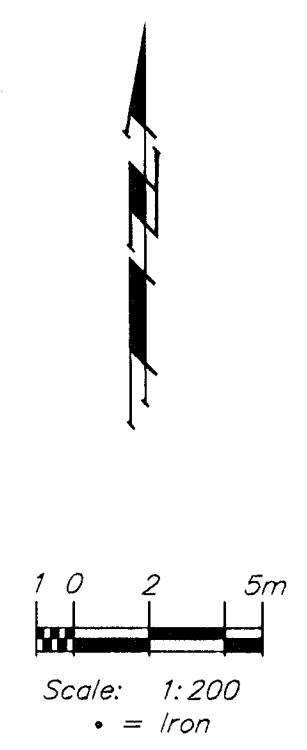
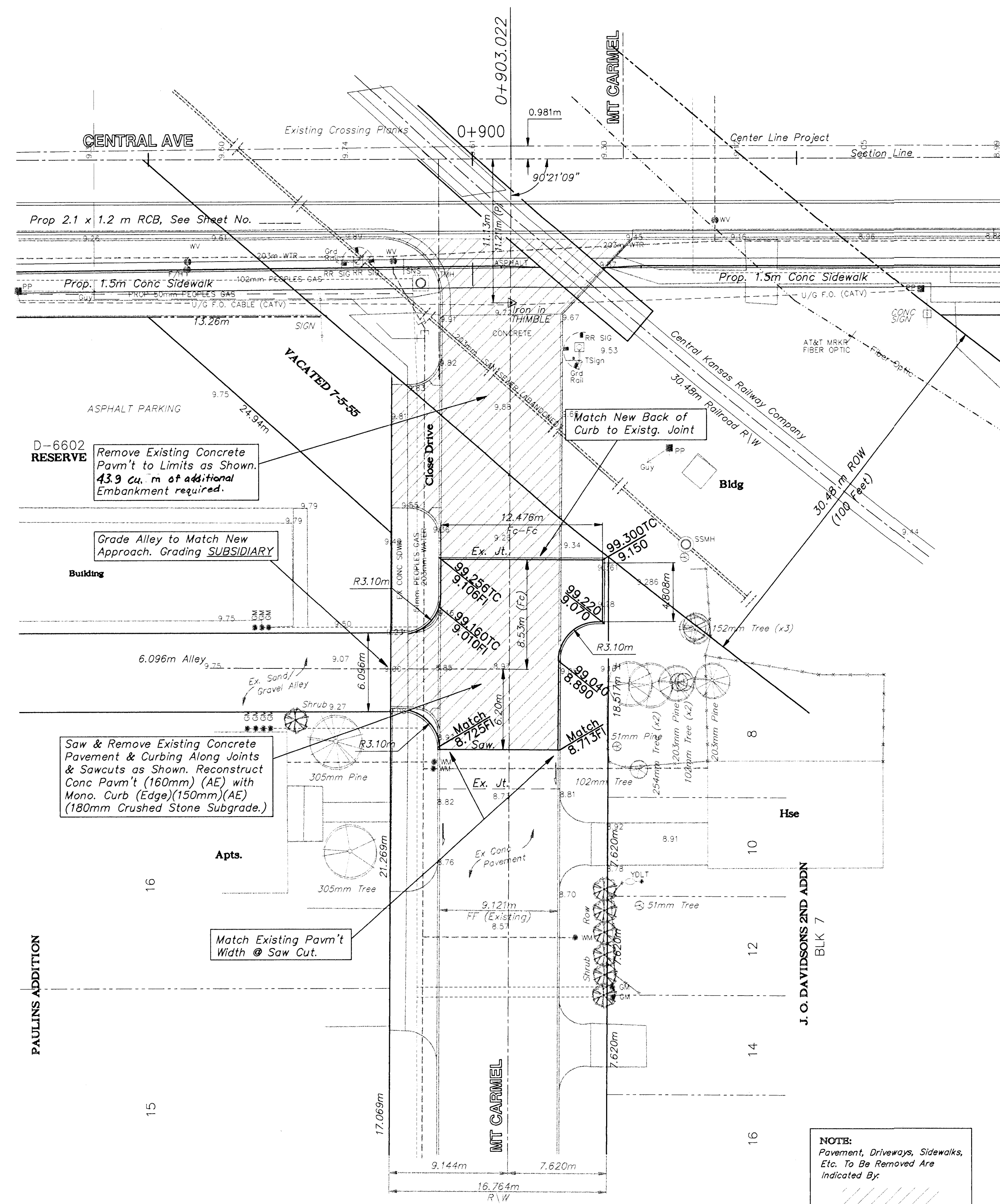
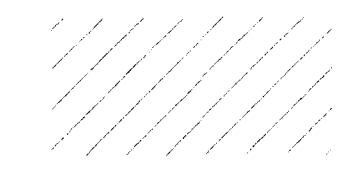
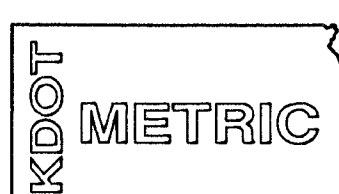


| FHWA REGION NO. | STATE | PROJECT NO. | FISCAL YEAR | SHEET NO. | TOTAL SHEETS |
|-----------------|--------|-------------|-------------|-----------|--------------|
| 7 | KANSAS | 87N-0094-01 | 1998 | 34 | 202 |



NOTES:
Pavement, Driveways, Sidewalks, Etc. To Be Removed Are Indicated By:

| | | | | | |
|--------------------------------------|----------------|-----------------|----------------|----------------|---------------------------|
| PROJECT NUMBER 472 - 82906 | | | | | PROJ NUMBER 95 05 E026 |
| DESIGN STAFF | DRAWN STAFF | APPROVED JFB | DATE NOV 98 | SCALE NOTED | DIRECTOR CENTZOOD |
| | | | | | SHEET NAME PAV15 |

CAPITAL IMPROVEMENT PROJECT
MT CARMEL
Cul-de-sac South of Central

BAUGHMAN COMPANY P.A.
ENGINEERING, SURVEYING, & PLANNING
316-282-7271 • 315 ELLIS • WICHITA, KANSAS 67211