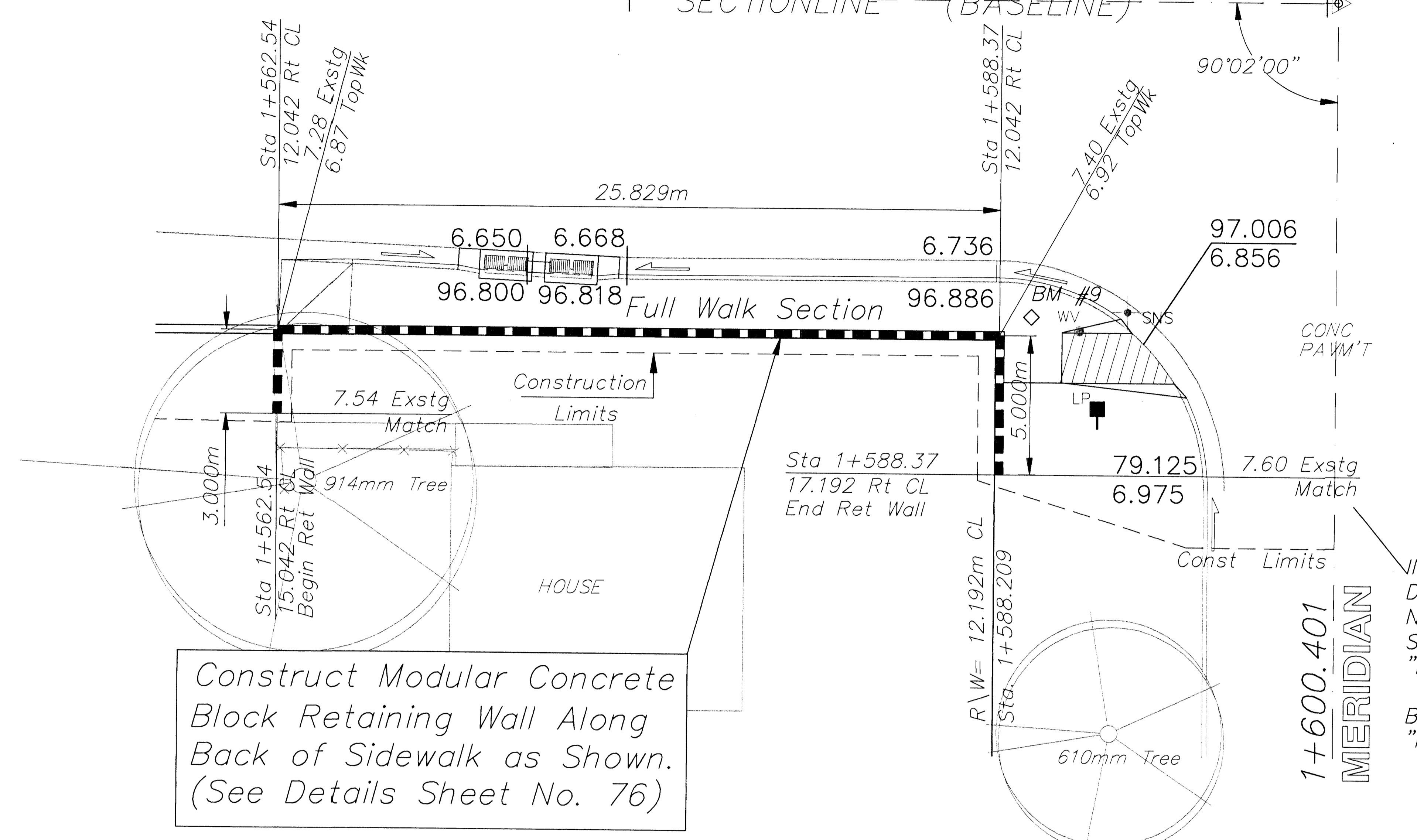


FHWA REGION NO.	STATE	PROJECT NO.	FISCAL YEAR	SHEET NO.	TOTAL SHEETS
7	KANSAS	87N-0094-01	1998	75	202

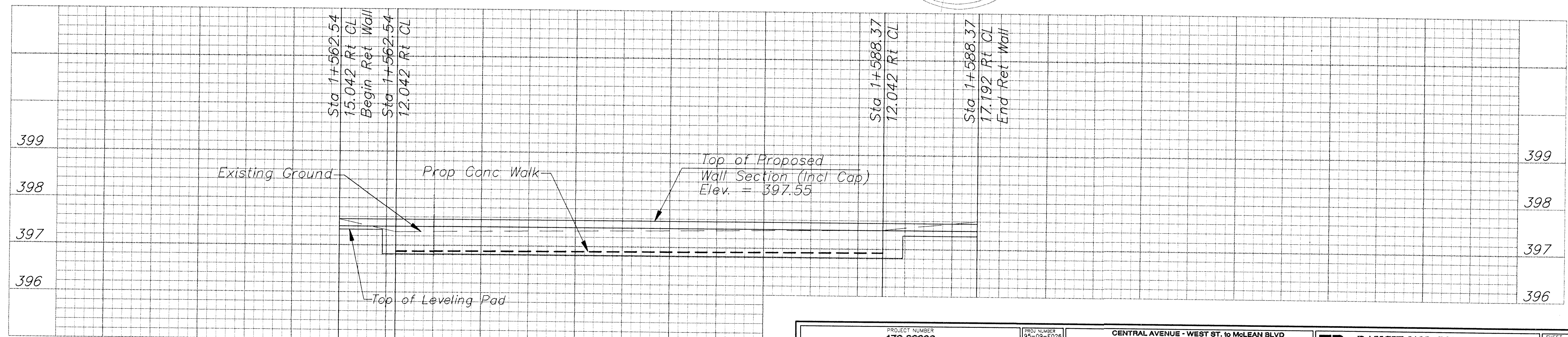
Project **CENTRAL AVE.**
SECTIONLINE (BASELINE)



Construct Modular Concrete Block Retaining Wall Along Back of Sidewalk as Shown. (See Details Sheet No. 76)

INSTALLATION, GRADING, LEVELING PAD, DRAIN TILE, ETC. AND ALL OTHER WORK NECESSARY TO CONSTRUCT RETAINING WALL SHALL BE SUBSIDIARY TO THE BID ITEM "RETAINING WALL (MODULAR CONCRETE)"

BID ITEM QUANTITIES (THIS SHEET)
"RETAINING WALL (MODULAR CONCRETE)" 21.9 sq m



PROJECT NUMBER 472-82908				
DESIGN STAFF	DRAWN DJB	APPROVED JFB	DATE NOV98	SCALE NOTED

PROJ NUMBER 98-09-E026	DIRECTOR CENTZOO	SHEET NAME RETWALL4
---------------------------	---------------------	------------------------

CENTRAL AVENUE - WEST ST. to McLEAN BLVD
CENTRAL & MERIDIAN
RETAINING WALL DETAIL - S.W. Corner

BAUGHMAN COMPANY P.A.
ENGINEERING, SURVEYING, & PLANNING
319-282-7271 • 319 ELLIS • WICHITA, KANSAS 67211