

BENCHMARKS

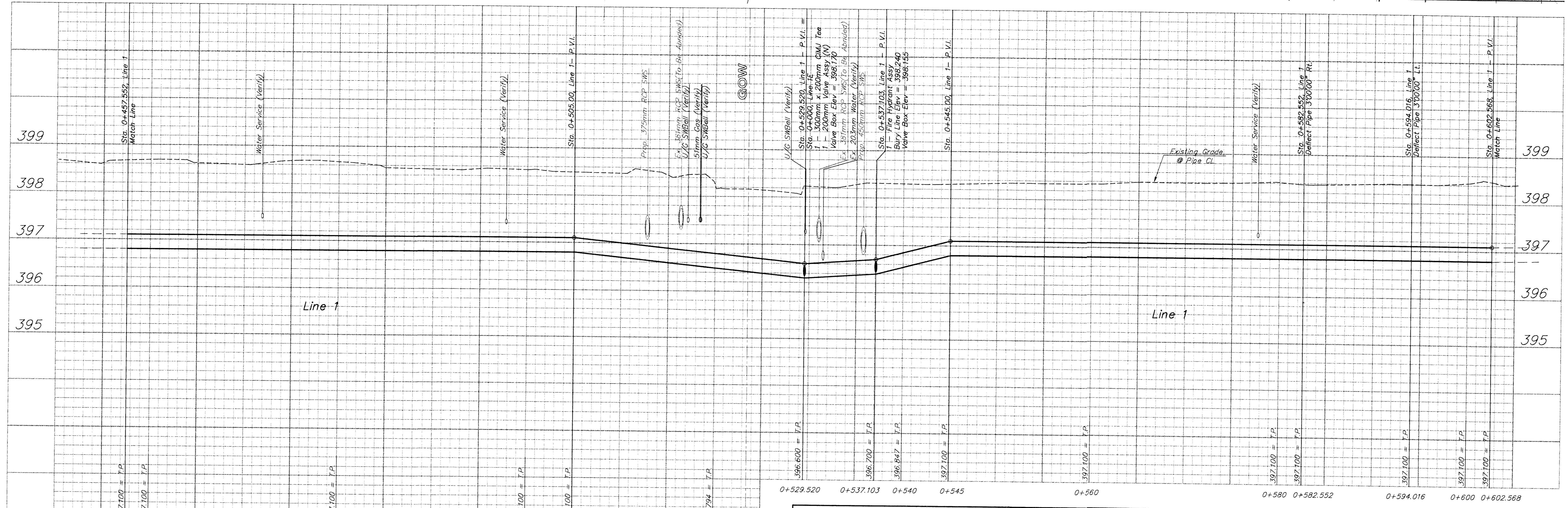
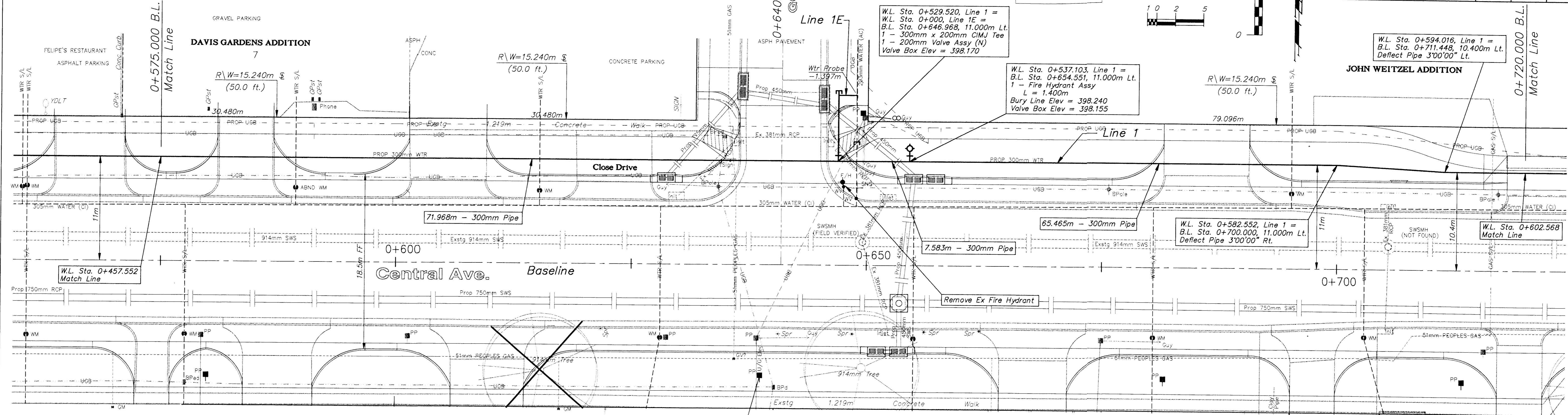
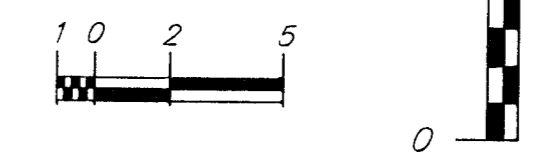
BM #4 - "□" Top of Curb @ 15.24m North and 4.72m West of the Centerline of both Joann and Central. Elev. = 398.589 SI Units (1307.69 MSL Datum)

BM #5 - City Disc Located @ 9.14m South and 12.8m East of the Centerline of both Sheridan and Central. Elev. = 399.024 SI Units (1309.08 MSL Datum)

METRIC

Scale: 1:200 (Horizontal)
Scale: 1:40 (Vertical)

| FHWA REGION NO. | STATE | PROJECT NO. | FISCAL YEAR | SHEET NO. | TOTAL SHEETS |
|-----------------|--------|-------------|-------------|-----------|--------------|
| 7 | KANSAS | | 1998 | 94 | 202 |



| | | | | |
|--------|-------|----------|--------|-------|
| DESIGN | DRAWN | APPROVED | DATE | SCALE |
| JFB | STAFF | JFB | NOV 98 | NOTED |

PROJECT NUMBER
448 - 88918

WATER LINE IMPROVEMENTS - Line 1
B.L. Sta. 0+575.000 to B.L. Sta. 0+780.000
CENTRAL AVENUE - WEST ST TO MCLEAN

BAUGHMAN COMPANY P.A.
ENGINEERING, SURVEYING, & PLANNING
318-282-7271 • 315 ELLIS • WICHITA, KANSAS 67211