

Sta. 0+000, Begin Line 1 =
BL Sta. 1+259.145, 6.962m Lt.
Remove Ex. Brick SS Manhole.
Construct Special Shallow
Type "B" Manhole.
Rim Elev. 397.767
(City M.H. No. 5248-426)
Construct New 200mm PVC Pipe (E).

MESS ADDITION

SIM PARK GARDENS ADDITION

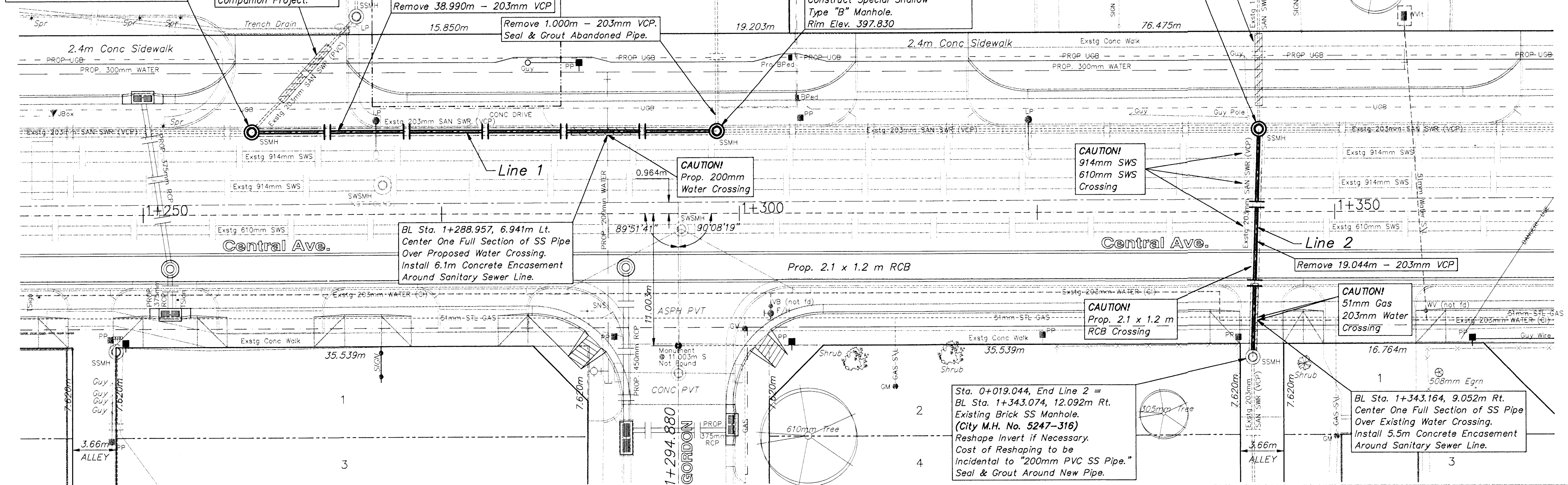
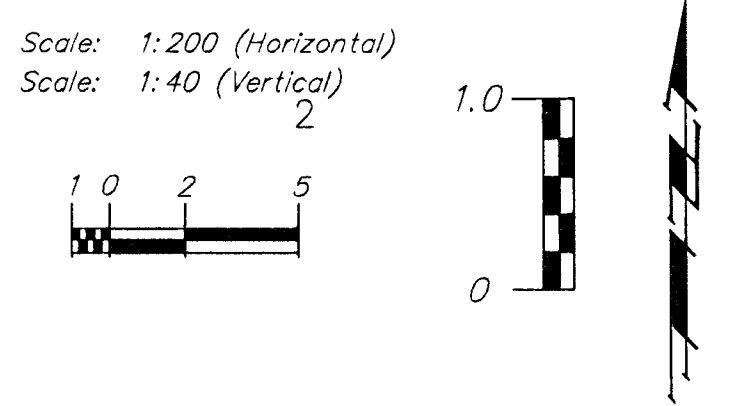
Sta. 0+038.990, End Line 1
BL Sta. 1+298.135, 6.935m Lt.
Remove Ex. Brick SS Manhole.
Construct Special Shallow
Type "B" Manhole.
Rim Elev. 397.830

Sta. 0+000, Begin Line 2 =
BL Sta. 1+343.634, 6.944m Lt.
Remove Ex. Brick SS Manhole.
Construct Special Shallow
Type "B" Manhole.
Rim Elev. 397.721
(City M.H. No. 5248-425)
Construct New 200mm PVC Pipe (S).

OSTEOPATHIC 2ND ADDITION

Concrete Encasement by
Companion Project.

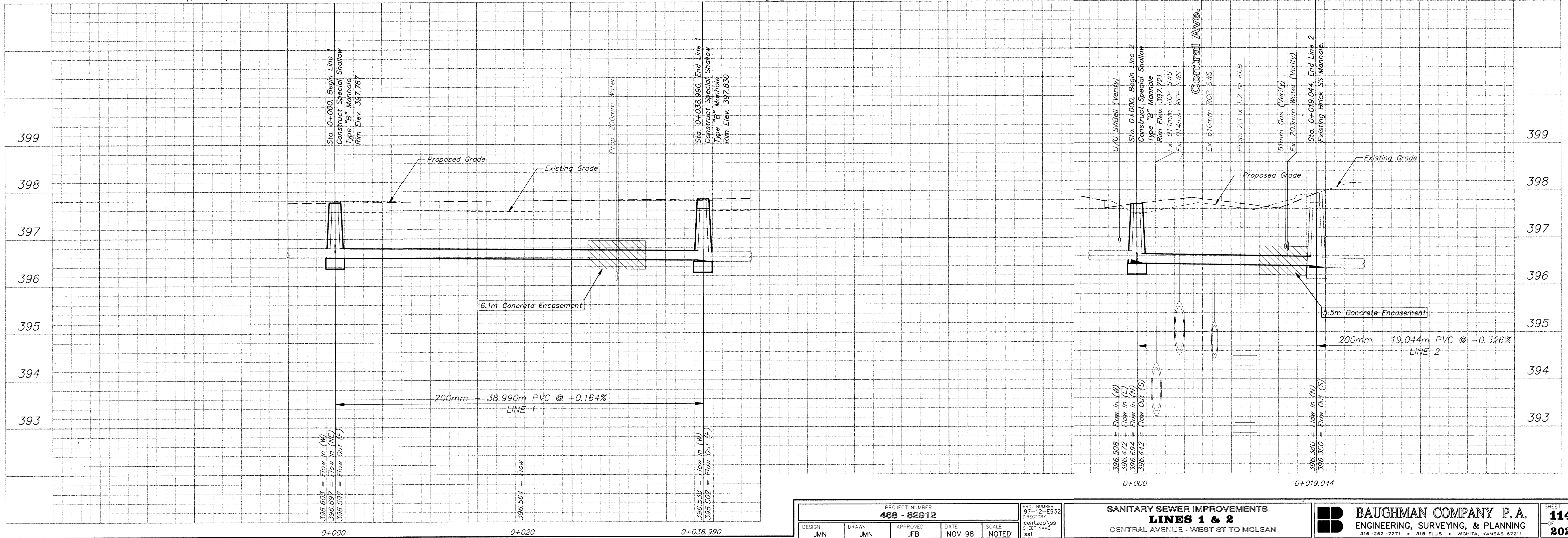
FHWA REGION NO.	STATE	PROJECT NO.	FISCAL YEAR	SHEET NO.	TOTAL SHEETS
7	KANSAS		1998	114	202



- NOTES:**
- Sanitary Sewer Information Referenced from City Records. **Book & Page**
G1 130
N 4
 - City Manhole Numbers Referenced from Dept. of Water & Sewer G.I.S. Records.

BM #7 - "□" Top of Curb @ 48.62m North and 4.72m East of the Centerline of both St. Paul and Central. Elev. = 398.144 SI Units (1306.23 MSL Datum)

BM #8 - "□" Top of Curb @ 31.39m South and 4.72m East of the Centerline of both Edwards and Central. Elev. = 397.997 SI Units (1305.75 MSL Datum)



PROJECT NUMBER 468-82912				SHEET NUMBER 97-12-E932	
DESIGN JMN	DRAWN JMN	APPROVED JFB	DATE NOV 98	SCALE NOTED	PROJECT TITLE SANITARY SEWER IMPROVEMENTS LINES 1 & 2 CENTRAL AVENUE - WEST ST TO MCLEAN
				BAUGHMAN COMPANY P. A. ENGINEERING, SURVEYING, & PLANNING 316-282-7271 • 315 ELLIS • WICHITA, KANSAS 67211	