

UNPLATTED TRACT  
25 LLC

SIERRA HILLS GOLF CLUB ADDITION  
UNITED GOLF OF WICHITA, INC.

N 1673363.06 E 1693432.78  
STA. 16+05.00, Water Line 1 =  
STA. 42+73.99 PAWNEE, 44.00' LT.  
1-FIRE HYDRANT ASS'Y. (S)  
L = 20'  
BURY LINE ELEV. 1328.70  
VALVE BOX ELEV. 1330.90

N 1673368.53 E 1693732.73  
STA. 19+05.00, Water Line 1 =  
STA. 45+73.99 PAWNEE, 44.00' LT.  
PVI

N 1673362.79 E 1692869.73  
STA. 10+37.90, Water Line 1 =  
STA. 37+11.02 PAWNEE, 54.00' LT.  
1-16" MJ BEND 45°

N 1673352.97 E 1692879.92  
STA. 10+52.05, Water Line 1 =  
STA. 37+21.03 PAWNEE, 44.00' LT.  
1-16" MJ BEND 45°  
1 AIR RELEASE

N 1673364.88 E 1693532.76  
STA. 17+05.00, Water Line 1 =  
STA. 43+73.99 PAWNEE, 44.00' LT.  
PVI

PROPOSED 20' WATERLINE  
EASEMENT BY SEPARATE  
INSTRUMENT

FENCE TO BE PROTECTED  
FROM ANY DAMAGE  
DURING CONSTRUCTION.

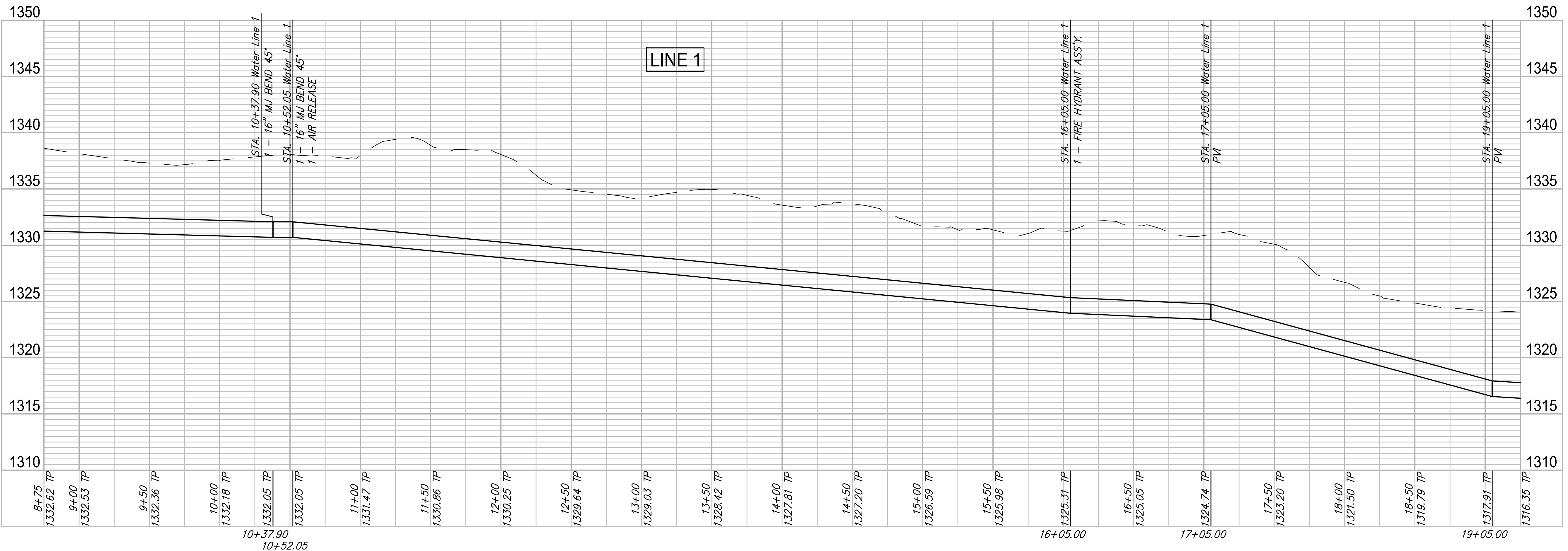
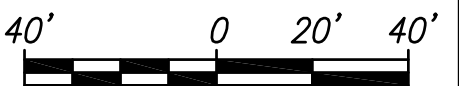
CAUTION! OVERHEAD  
ELECTRIC (WESTAR)

UNDERGROUND TELE.  
(A.T.&T.)

UNPLATTED TRACT  
160 LLC

ALL 16" PIPE ON THIS PROJECT  
SHALL BE RESTRAINED JOINT PIPE.

\* SUPPORT POWER POLES  
DURING OPEN EXCAVATION.



**RUGGLES BOHM**  
Professional Engineer  
Kansas

REVIEW: 7-27-2017  
DATE: 9-28-2017

DESIGN: EG  
DRAWN: [Signature]

PROJECT NUMBER: 448-90816  
DRAWING FILE: Water Line 1 - (2 of 3)

**Pawnee & 127th Waterline  
Waterline 1 - (2 of 3)**  
Wichita, Kansas

4  
OF  
13