

SIERRA HILLS GOLF CLUB ADDITION  
UNITED GOLF OF WICHITA, INC.

FENCE TO BE PROTECTED FROM ANY DAMAGE DURING CONSTRUCTION.

N 1673368.53 E 1693732.73  
STA. 19+05.00, Water Line 1 =  
STA. 45+73.99 PAWNEE, 44.00' LT.  
SEE PREVIOUS SHEET

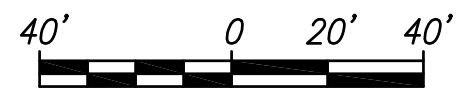
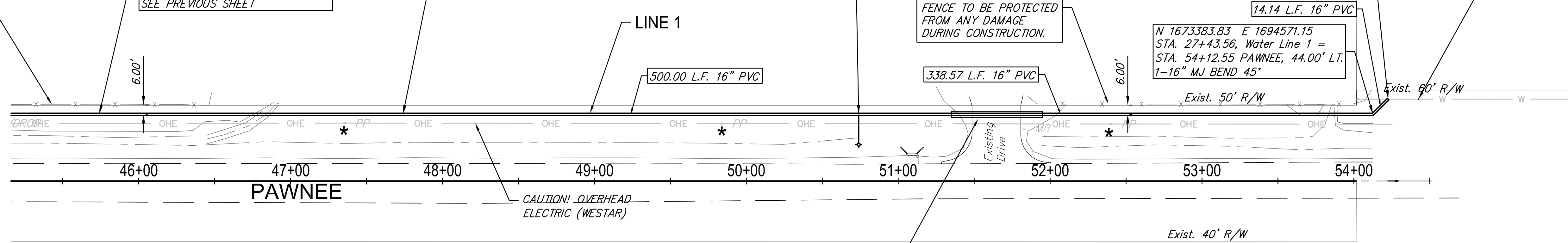
N 1673372.18 E 1693932.70  
STA. 21+05.00, Water Line 1 =  
STA. 47+73.99 PAWNEE, 44.00' LT.  
PVI

N 1673377.65 E 1694232.64  
STA. 24+05.00, Water Line 1 =  
STA. 50+73.98 PAWNEE, 44.00' LT.  
1-FIRE HYDRANT ASS'Y. (S)  
L = 20'  
BURY LINE ELEV. 1321.80  
VALVE BOX ELEV. 1321.40

N 1673394.01 E 1694580.97  
STA. 27+57.70, Water Line 1 =  
STA. 54+22.55 PAWNEE, 53.99' LT.  
REMOVE EXISTING BLOWOFF ASS'Y.  
AND 1 SECTION 16" PIPE.  
1-16" MJ BEND 45"  
CONNECT TO EXISTING 16" LINE

N 1673383.83 E 1694571.15  
STA. 27+43.56, Water Line 1 =  
STA. 54+12.55 PAWNEE, 44.00' LT.  
1-16" MJ BEND 45"

EXISTING 16" ANCHORED VALVE

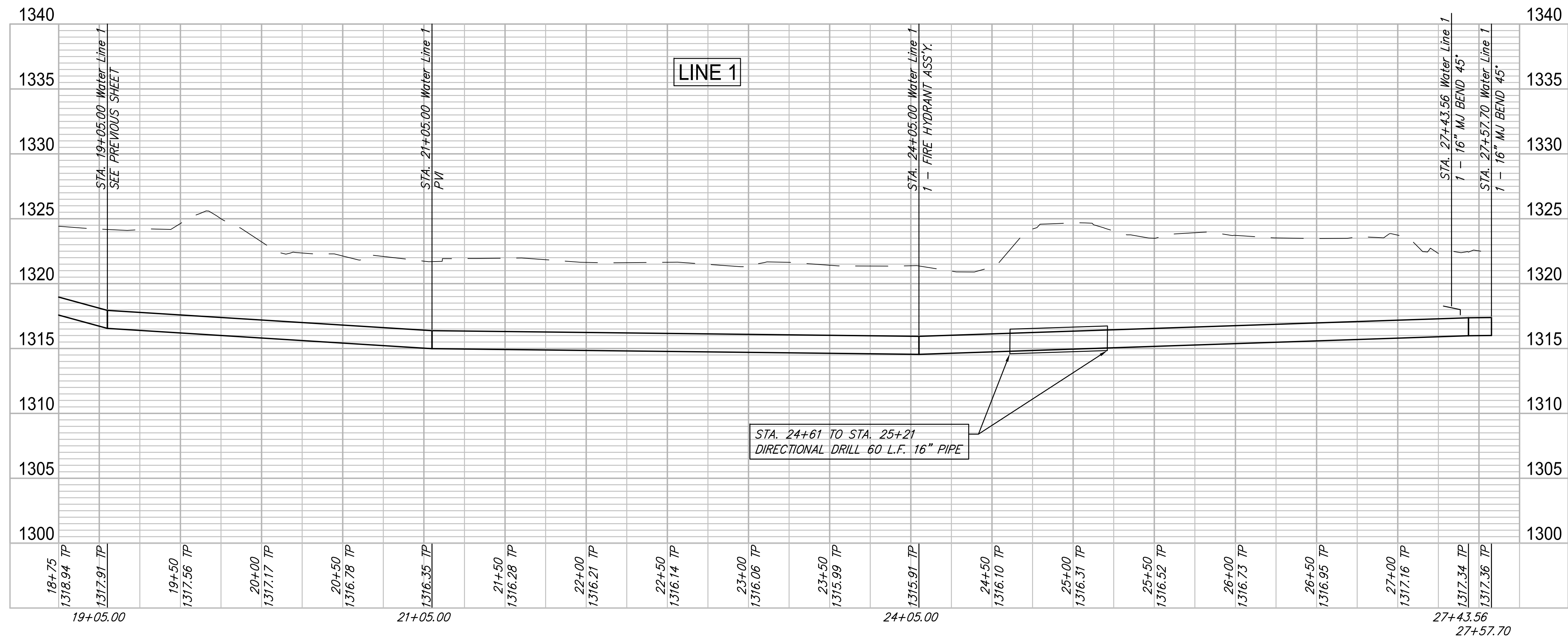


STA. 24+61 TO STA. 25+21  
DIRECTIONAL DRILL 60 L.F. 16" PIPE

ALL 16" PIPE ON THIS PROJECT  
SHALL BE RESTRAINED JOINT PIPE.

\* SUPPORT POWER POLES  
DURING OPEN EXCAVATION.

UNPLATTED TRACT  
160 LLC



REVIEW	7-27-2017
DATE	9-28-2017
DESIGN	EG
DRAWN	(PDS)
PROJECT NUMBER	448-90816
DRAWING FILE	Water Line 1 - (3 of 3)
<b>Pawnee &amp; 127th Waterline</b> <b>Waterline 1 - (3 of 3)</b> Wichita, Kansas	
RB JOB	4881W
SHEET	5
OF	13