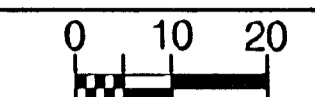
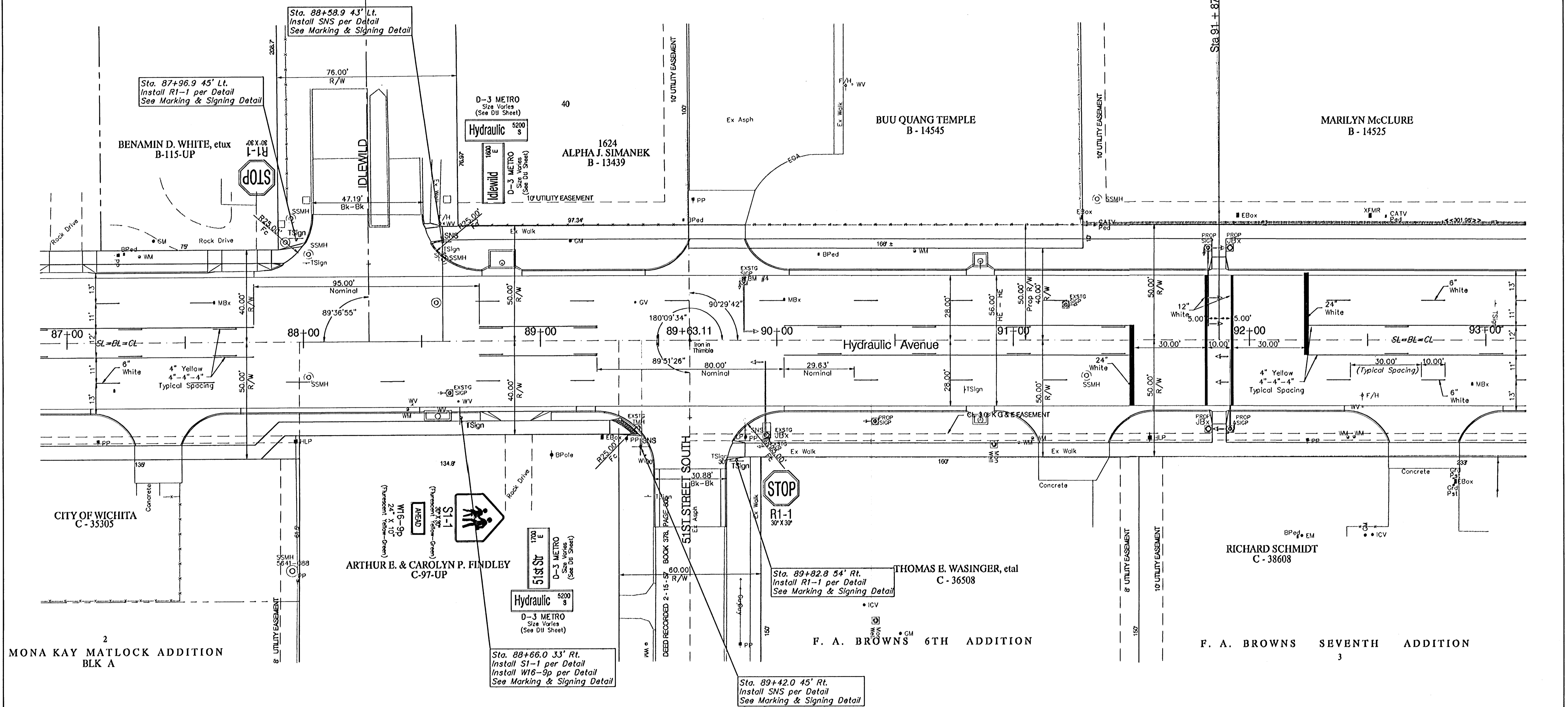


BENCHMARKS:
 BM #4 - City of Wichita Bench Mark Disc, School crossing signal light base on West side of Hydraulic at 51st St. South. Sta. 89+86.0, 26.7' Lt. Elev. = 80.47 (City Datum)



FINA REGION NO.	STATE	PROJECT NO.	FISCAL YEAR	SHEET NO.	TOTAL SHEETS
7	KANSAS	87-N-0303-01	2003	78	143

SCALE: 1" = 20'



2
 MONA KAY MATLOCK ADDITION
 BLK A

3
 F. A. BROWNS SEVENTH ADDITION

PROJECT NUMBER 472-83902		SHEET NAME Mark08		ENGINEERING DIRECTORY R:\Eng\Hydraulic_pbs\2\Traffic		CAPITAL IMPROVEMENT PROJECT PAVEMENT MARKING PLAN		BAUGHMAN COMPANY, P.A. ENGINEERING, SURVEYING, & PLANNING 316-262-7271 • 315 ELLIS • WICHITA, KANSAS 67211	SHEET 78 OF 143
DESIGN JFB	DRAWN TCA	APPROVED JFB/KK	DATE March 04	SCALE 1"=20'	BAUGHMAN NO 99-09-E451	HYDRAULIC AVE PAVING - SOUTH OF 57th STREET SOUTH TO 47th STREET SOUTH			