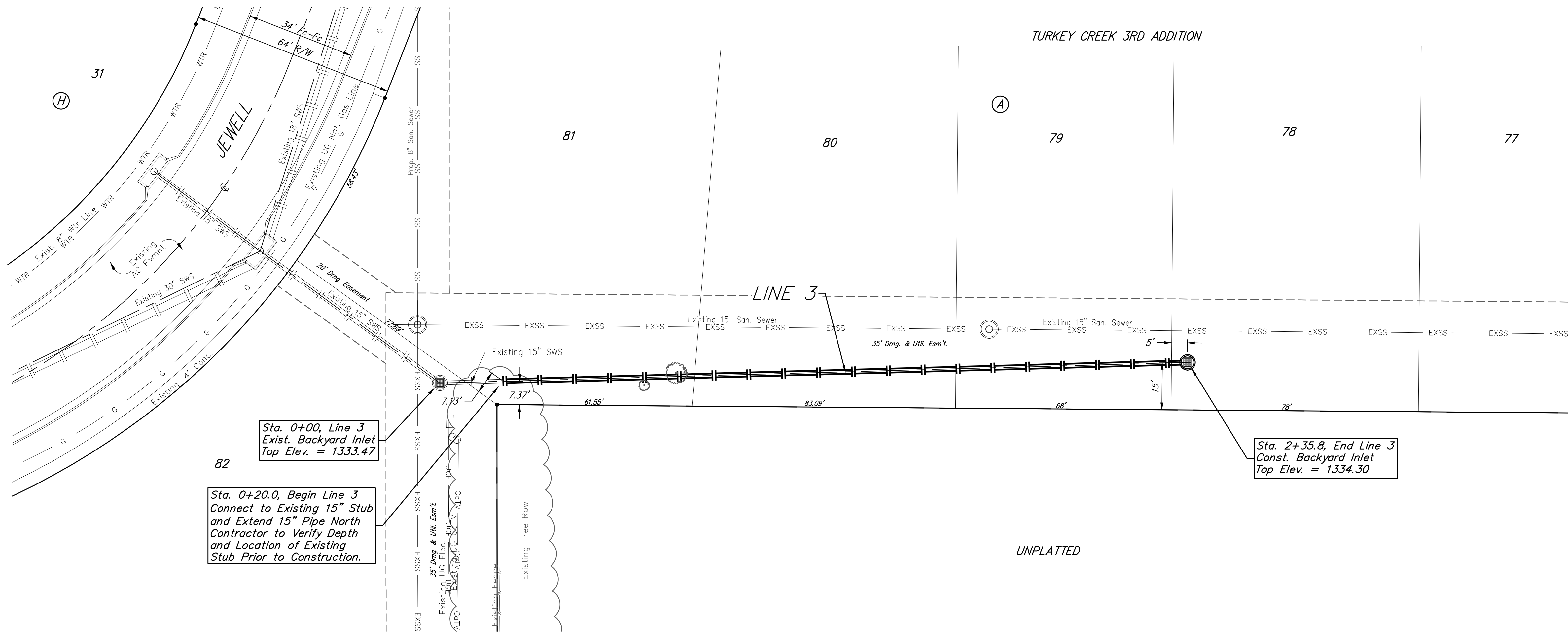
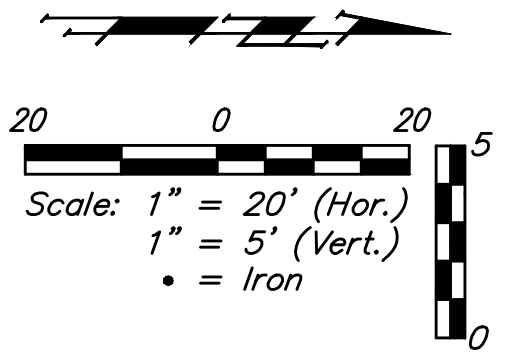


BENCHMARKS:

BM #1: "□" Cut in top of curb, south of SE corner of Lot 82, Block A, Turkey Creek 3rd Addition. Elev. = 1335.49 NGVD29

BM #2: "□" Cut on top of curb inlet, SW of the SE corner of Lot 81, Block A, Turkey Creek 3rd Addition. Elev. = 1335.95 NGVD29

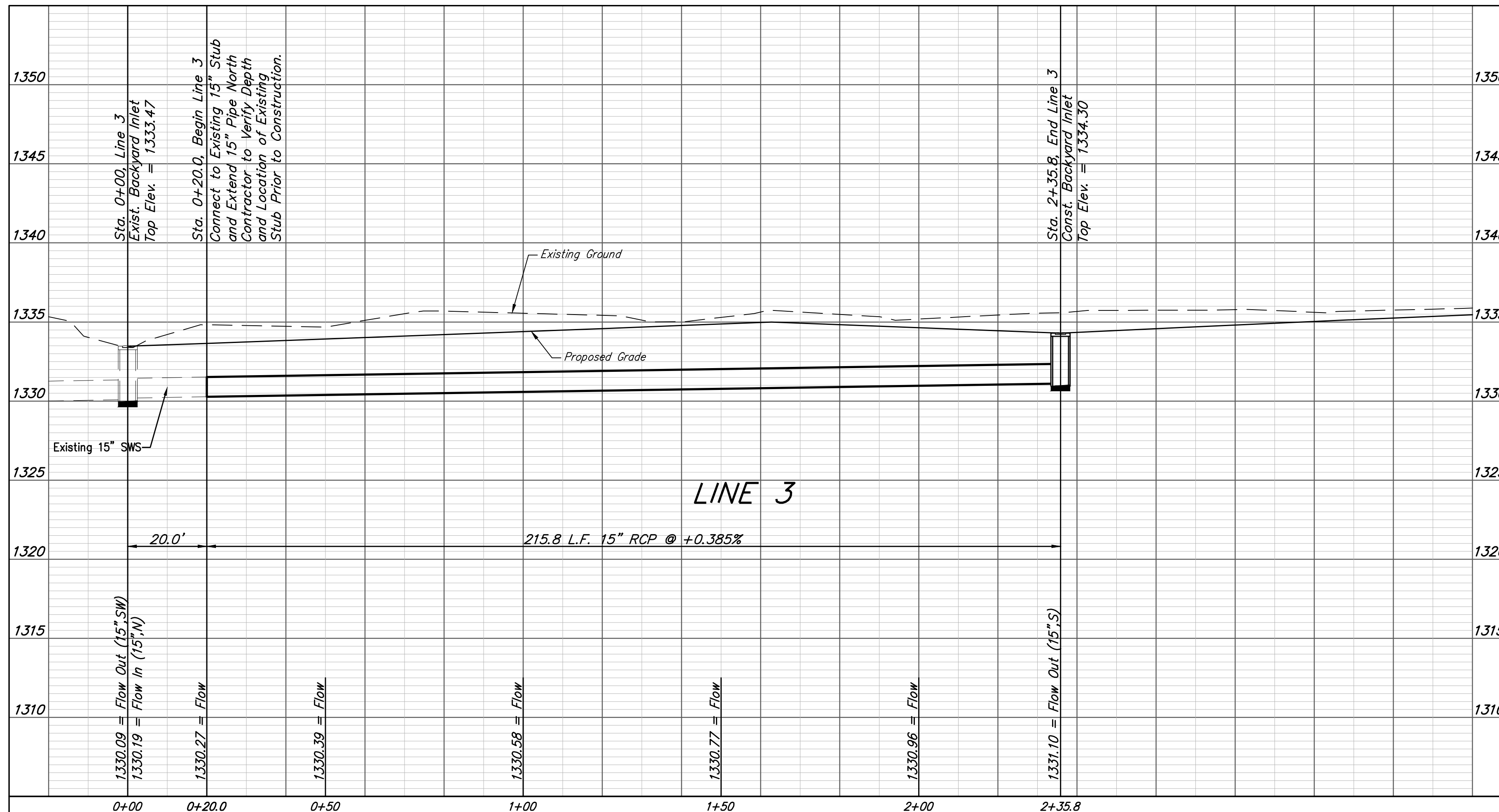
BM #3: "□" Cut on top of yard inlet, 5' N & 43.5' E of the SE corner of Lot 28, Block H, Turkey Creek 3rd Addition. Elev. = 1335.95 NGVD29



Sta. 0+00, Line 3
Exist. Backyard Inlet
Top Elev. = 1333.47

Sta. 0+20.0, Begin Line 3
Connect to Existing 15" Stub
and Extend 15" Pipe North
Contractor to Verify Depth
and Location of Existing
Stub Prior to Construction.

Sta. 2+35.8, End Line 3
Const. Backyard Inlet
Top Elev. = 1334.30



Baughman		Turkey Creek 3rd Addition - Phase 3B	
		LINE 3	
		Storm Water Sewer Improvements	
Baughman Company, P.A. 315 Ellis St. Wichita, KS 67211 P 316-262-7271 F 316-262-0149 ENGINEERING SURVEYING PLANNING LANDSCAPE ARCHITECTURE			
PROJECT NUMBER 472-85232	DESIGN NBW	DRAWN JAK	
REVISIONS:	APPROVED	DATE 4/25/18	
	SCALE Noted		
	SHEET	14 OF 31	