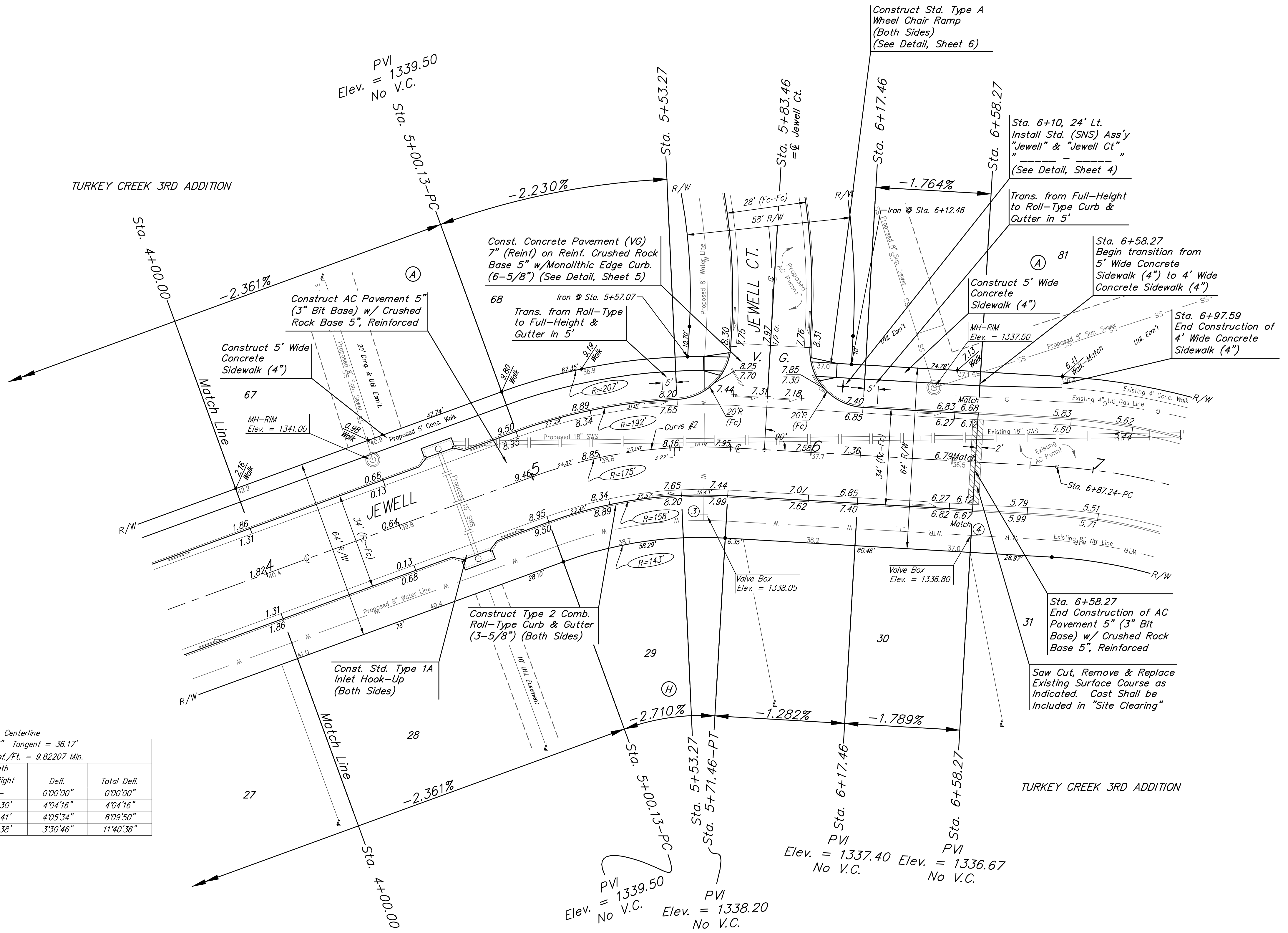
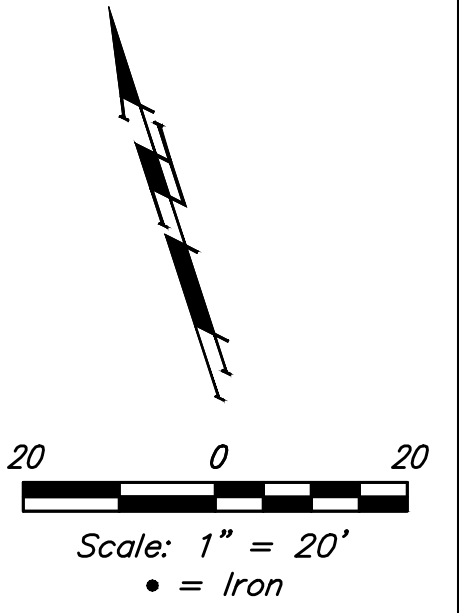


**BENCHMARKS:**

BM #1: "□" Cut in top of curb, south of SE corner of Lot 82, Block A, Turkey Creek 3rd Addition. Elev. = 1335.49 NGVD29

BM #2: "□" Cut on top of curb inlet, SW of the SE corner of Lot 81, Block A, Turkey Creek 3rd Addition. Elev. = 1335.95 NGVD29

BM #3: "□" Cut on top of yard inlet, 5' N & 43.5' E of the SE corner of Lot 28, Block H, Turkey Creek 3rd Addition. Elev. = 1335.95 NGVD29



Curve #2  
Curve Data Based on Centerline

Rad. = 175' Delta = 232°1'33" Tangent = 36.17'  
Arc = 71.33' L.C. = 70.84' Def./Fl. = 9.82207 Min.

Station	Arc	Face Chord Length		Defl.	Total Defl.
		8' Left	8' Right		
5+00.13	-	-	-	0'00"00"	0'00"00"
5+25.00	24.87'	28.40'	21.30'	4'04"16"	4'04"16"
5+50.00	25.00'	28.55'	21.41'	4'05"34"	8'09"50"
5+71.46	21.46'	24.51'	18.38'	3'30"46"	11'40"36"

Roll type curb & gutter to be constructed on the pavement on this sheet. Top of curb elevation are given for full height curb.

	Turkey Creek 3rd Addition - Phase 3B	
	<b>JEWELL</b> Sta. 4+00 to Sta. 6+58.27	
Baughman Company, P.A. 315 Ellis St. Wichita, KS 67211 P 316-262-7271 F 316-262-0149 ENGINEERING   SURVEYING   PLANNING   LANDSCAPE ARCHITECTURE		
PROJECT NUMBER 472-85232	DESIGN NBW	DRAWN JAK
REVISIONS:	APPROVED	DATE 4/24/18
SCALE Noted		SHEET <b>9 OF 31</b>