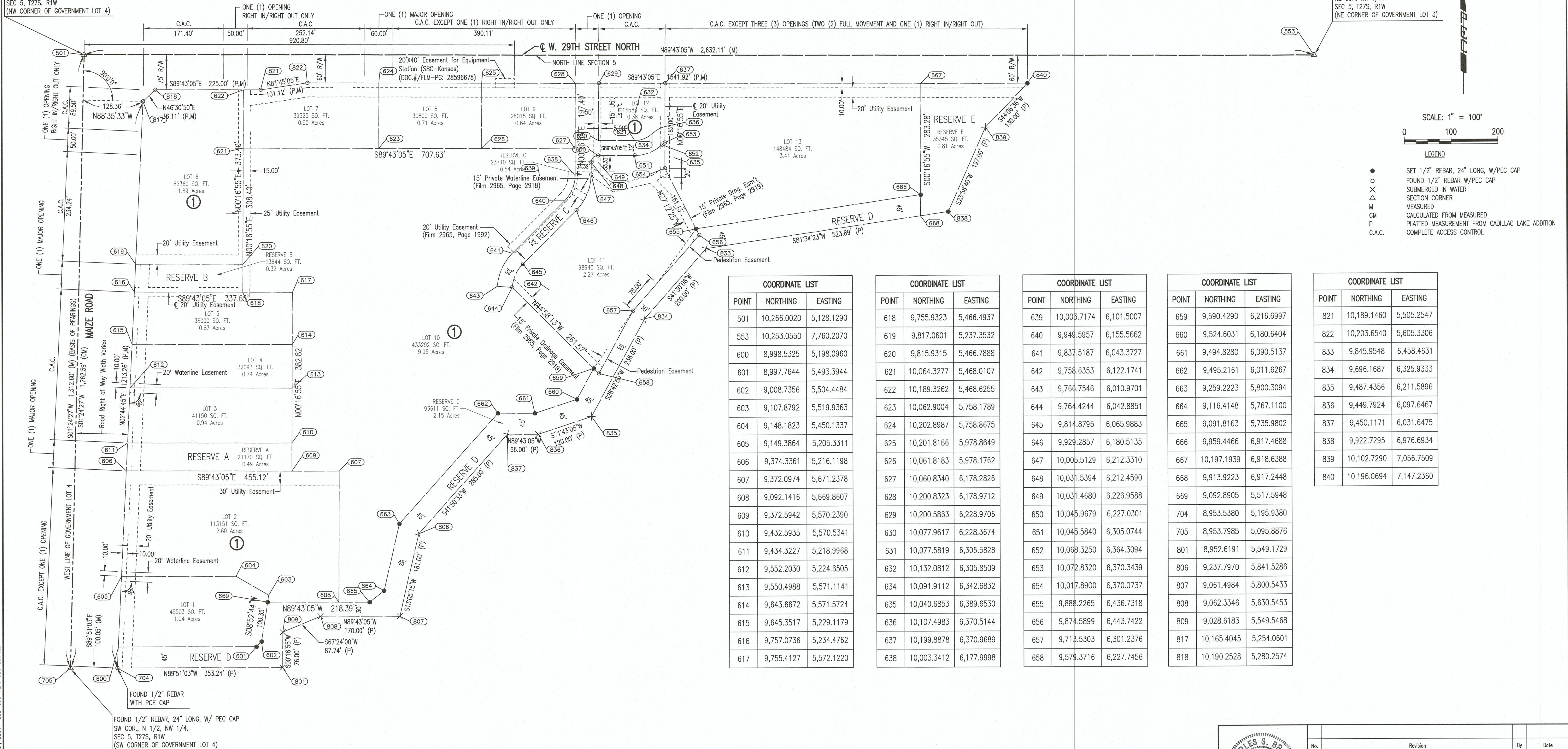


CADILLAC LAKE 2ND ADDITION TO WICHITA, SEDGWICK COUNTY, KANSAS BUBBLE MAP

FOUND 1/2" IRON PIPE IN THIMBLE
NW COR.
SEC 5, T27S, R1W
(NW CORNER OF GOVERNMENT LOT 4)

FOUND 1/2" IRON PIPE IN THIMBLE
NE COR. NW 1/4,
SEC 5, T27S, R1W
(NE CORNER OF GOVERNMENT LOT 3)



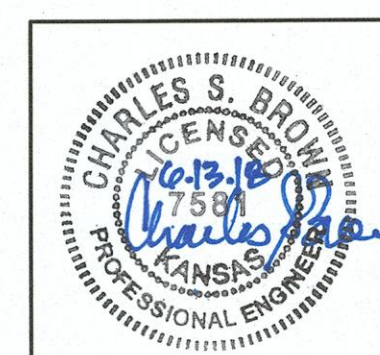
SCALE: 1" = 100'
0 100 200

LEGEND

- SET 1/2" REBAR, 24" LONG, W/PEC CAP
- FOUND 1/2" REBAR W/PEC CAP
- △ SUBMERGED IN WATER
- △ SECTION CORNER
- M MEASURED
- CM CALCULATED FROM MEASURED
- P PLATTED MEASUREMENT FROM CADILLAC LAKE ADDITION
- C.A.C. COMPLETE ACCESS CONTROL

COORDINATE LIST			COORDINATE LIST			COORDINATE LIST			COORDINATE LIST			COORDINATE LIST		
POINT	NORTHING	EASTING	POINT	NORTHING	EASTING	POINT	NORTHING	EASTING	POINT	NORTHING	EASTING	POINT	NORTHING	EASTING
501	10,266.0020	5,128.1290	618	9,755.9323	5,466.4937	639	10,003.7174	6,101.5007	659	9,590.4290	6,216.6997	821	10,189.1460	5,505.2547
553	10,253.0550	7,760.2070	619	9,817.0601	5,237.3532	640	9,949.5957	6,155.5662	660	9,524.6031	6,180.6404	822	10,203.6540	5,605.3306
600	8,998.5325	5,198.0960	620	9,815.9315	5,466.7888	641	9,837.5187	6,043.3727	661	9,494.8280	6,090.5137	833	9,845.9548	6,458.4631
601	8,997.7644	5,493.3944	621	10,064.3277	5,468.0107	642	9,758.6353	6,122.1741	662	9,495.2161	6,011.6267	834	9,696.1687	6,325.9333
602	9,008.7356	5,504.4484	622	10,189.3262	5,468.6255	643	9,766.7546	6,010.9701	663	9,259.2223	5,800.3094	835	9,487.4356	6,211.5896
603	9,107.8792	5,519.9363	623	10,062.9004	5,758.1789	644	9,764.4244	6,042.8851	664	9,116.4148	5,767.1100	836	9,449.7924	6,097.6467
604	9,148.1823	5,450.1337	624	10,202.8987	5,758.8675	645	9,814.8795	6,065.9883	665	9,091.8163	5,735.9802	837	9,450.1171	6,031.6475
605	9,149.3864	5,205.3311	625	10,201.8166	5,978.8649	646	9,929.2857	6,180.5135	666	9,959.4466	6,917.4688	838	9,922.7295	6,976.6934
606	9,374.3361	5,216.1198	626	10,061.8183	5,978.1762	647	10,005.5129	6,212.3310	667	10,197.1939	6,918.6388	839	10,102.7290	7,056.7509
607	9,372.0974	5,671.2378	627	10,060.8340	6,178.2826	648	10,031.5394	6,212.4590	668	9,913.9223	6,917.2448	840	10,196.0694	7,147.2360
608	9,092.1416	5,669.8607	628	10,200.8323	6,178.9712	649	10,031.4680	6,226.9588	669	9,092.8905	5,517.5948			
609	9,372.5942	5,570.2390	629	10,200.5863	6,228.9706	650	10,045.9679	6,227.0301	704	8,953.5380	5,195.9380			
610	9,432.5935	5,570.5341	630	10,077.9617	6,228.3674	651	10,045.5840	6,305.0744	705	8,953.7985	5,095.8876			
611	9,434.3227	5,218.9968	631	10,077.5819	6,305.5828	652	10,068.3250	6,364.3094	801	8,952.6191	5,549.1729			
612	9,552.2030	5,224.6505	632	10,132.0812	6,305.8509	653	10,072.8320	6,370.3439	806	9,237.7970	5,841.5286			
613	9,550.4988	5,571.1141	633	9,550.4988	5,571.1141	654	10,017.8900	6,370.0737	807	9,061.4984	5,800.5433			
614	9,643.6672	5,571.5724	634	10,091.9112	6,342.6832	655	9,888.2265	6,436.7318	808	9,062.3346	5,630.5453			
615	9,645.3517	5,229.1179	635	10,040.6853	6,389.6530	656	9,874.5899	6,443.7422	809	9,028.6183	5,549.5468			
616	9,757.0736	5,234.4762	636	10,107.4983	6,370.5144	657	9,713.5303	6,301.2376	817	10,165.4045	5,254.0601			
617	9,755.4127	5,572.1220	637	10,199.8878	6,370.9689	658	9,579.3716	6,227.7456	818	10,190.2528	5,280.2574			
			638	10,003.3412	6,177.9998									

Saved 04-04-2018 12:15:15 PM by CSI
 Plot Scale 1:1 06-12-2018 3:19:51 PM by CSI
 U:\Wichita-Civil\2018\180017\000 Main Drawings\180017-000-003-PLAT COORDINATES



No.	Revision	By	Date
CADILLAC LAKE 2ND ADDITION BIKE PATH IMPROVEMENTS PLAT COORDINATES			
GARY JANZEN, P.E. - CITY ENGINEER CITY OF WICHITA PROJECT NO. 472-85400			
PEC		PROFESSIONAL ENGINEERING CONSULTANTS, P.A. 303 SOUTH TOPEKA WICHITA, KS 67202 316-262-2891 www.pec1.com	
Designed by	CSB, RMG	Job No.	35-180017-000
Drawn by	CSL	Date	APRIL 2018
			Sht. 3 of 12