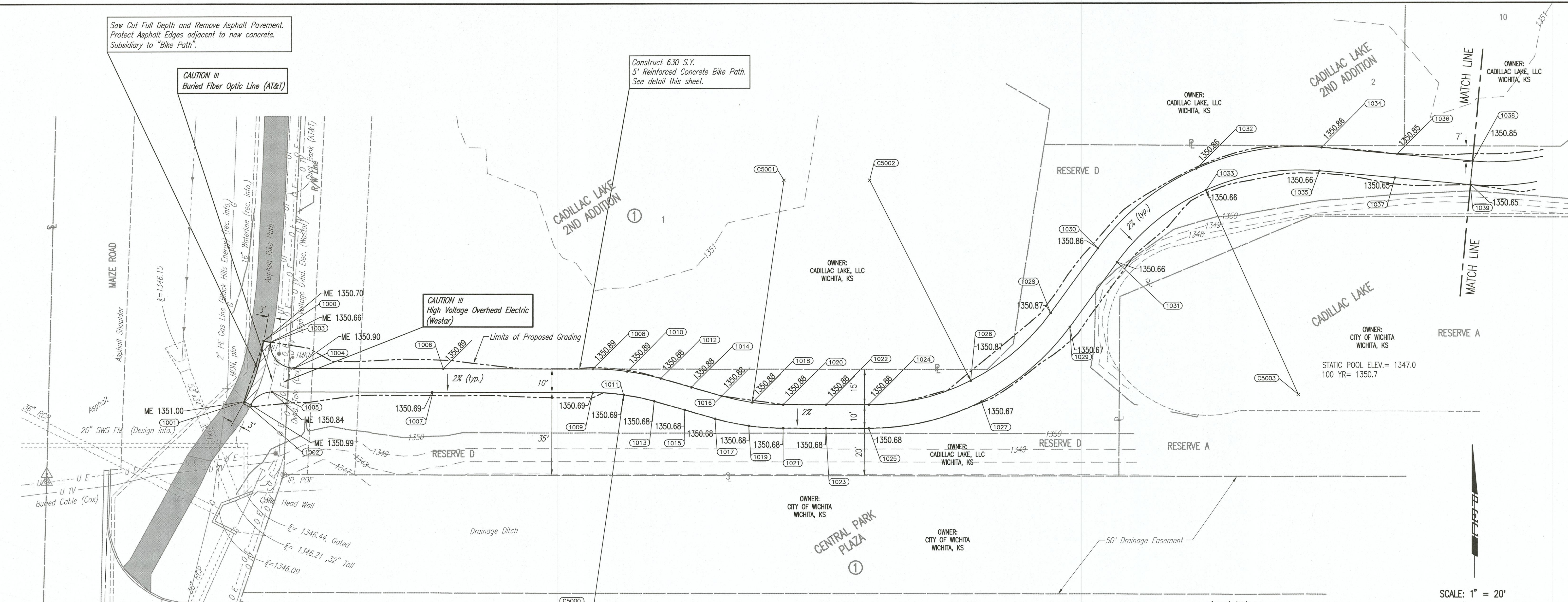


Saw Cut Full Depth and Remove Asphalt Pavement. Protect Asphalt Edges adjacent to new concrete. Subsidiary to "Bike Path".

CAUTION !!! Buried Fiber Optic Line (AT&T)

Construct 6.30 S.Y. 5" Reinforced Concrete Bike Path. See detail this sheet.

CAUTION !!! High Voltage Overhead Electric (Westar)

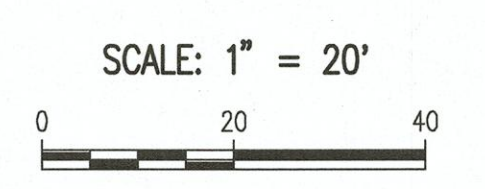
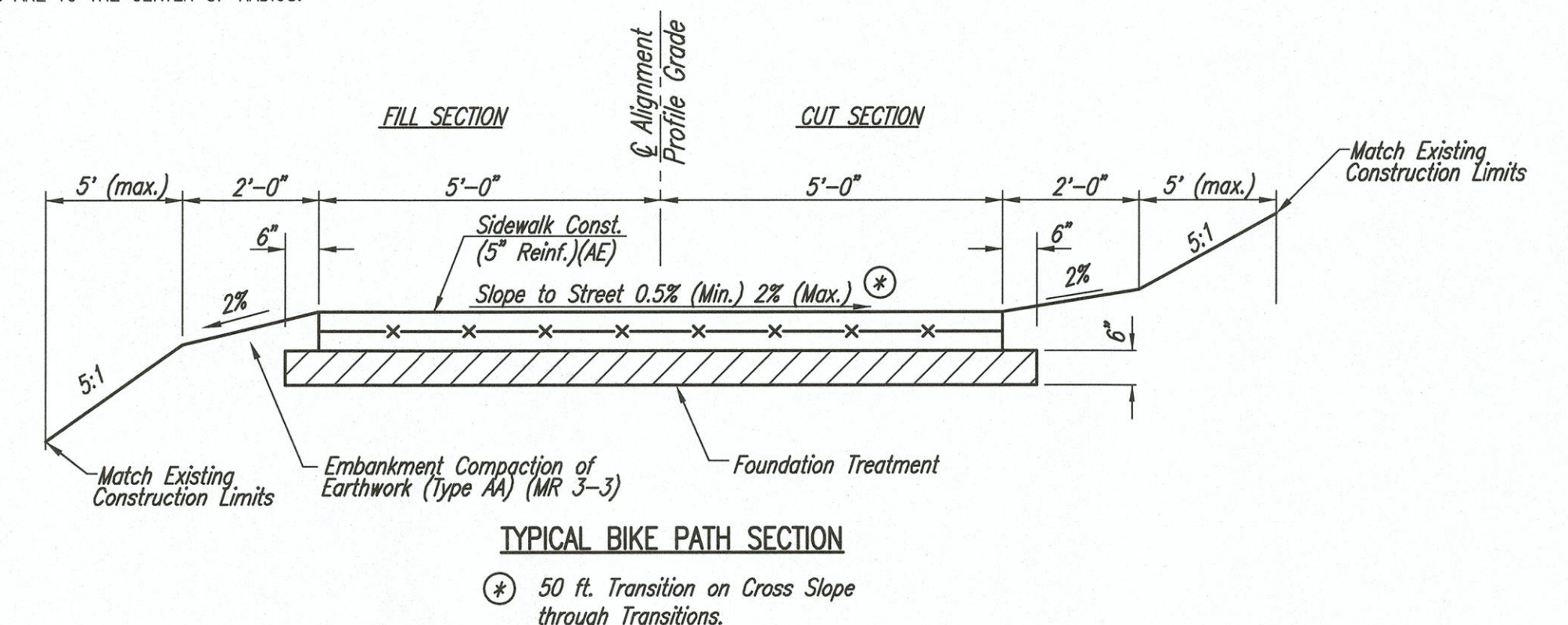
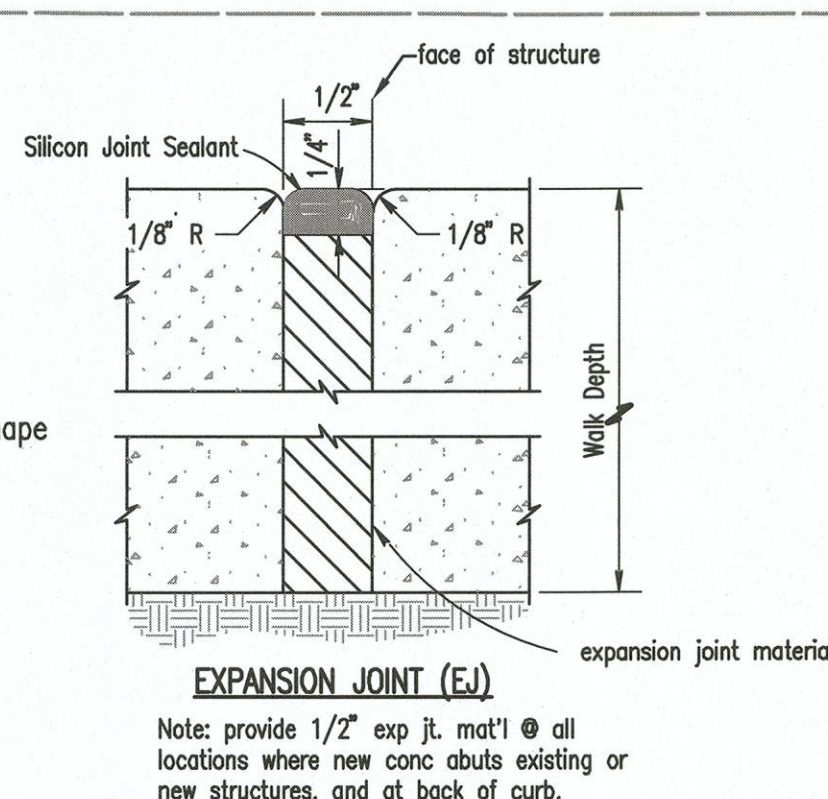
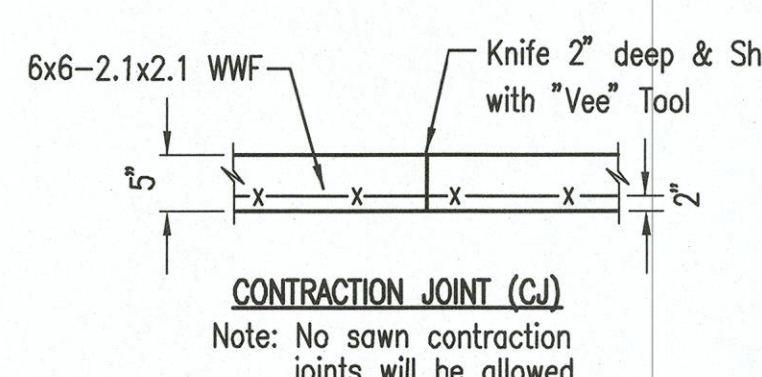
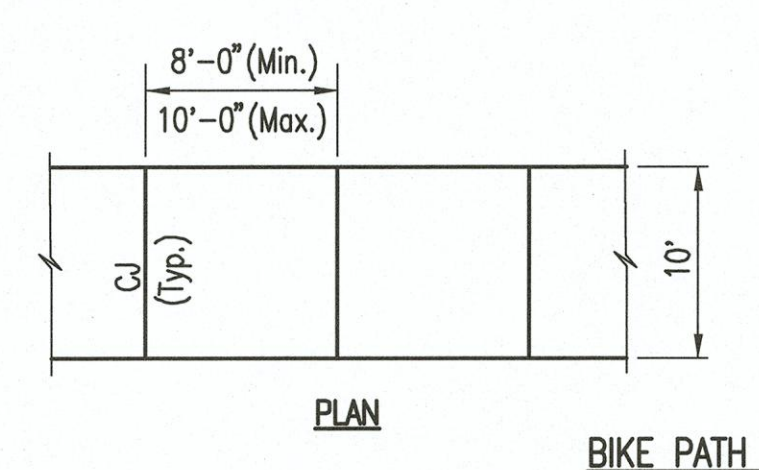


EDGE OF SIDEWALK COORDINATE POINTS

COORDINATE LIST			COORDINATE LIST			COORDINATE LIST		
POINT	NORTHING	EASTING	POINT	NORTHING	EASTING	POINT	NORTHING	EASTING
1000	9,010.2419	5,187.4540	1015	8,980.7880	5,365.5414	1030	9,049.0281	5,540.2693
1001	8,984.4385	5,179.3905	1016	8,986.6881	5,381.2083	1031	9,043.1206	5,548.3378
1002	8,982.1356	5,181.5697	1017	8,977.0775	5,378.4447	1032	9,082.7379	5,581.8713
1003	9,009.6524	5,190.3955	1018	8,983.9350	5,394.0835	1033	9,073.6199	5,585.9778
1004	8,998.5268	5,200.3059	1019	8,974.0347	5,392.6752	1034	9,091.5506	5,634.6862
1005	8,988.5510	5,190.9837	1020	8,982.9885	5,407.2156	1035	9,081.5934	5,633.7627
1006	8,998.3624	5,263.4814	1021	8,972.9885	5,407.1896	1036	9,088.5855	5,666.6554
1007	8,988.3736	5,259.1740	1022	8,982.9414	5,425.3156	1037	9,078.6282	5,665.7319
1008	8,998.1981	5,326.6568	1023	8,972.9414	5,425.2896	1038	9,085.6203	5,698.6246
1009	8,988.1981	5,326.6308	1024	8,982.8943	5,443.4156	1039	9,075.6630	5,697.7011
1010	8,997.1519	5,341.1713	1025	8,972.8943	5,443.3895			
1011	8,987.2516	5,339.7630	1026	8,993.1136	5,486.5262			
1012	8,994.1091	5,355.4017	1027	8,984.1893	5,491.0381			
1013	8,984.4985	5,352.6381	1028	9,021.7728	5,520.3139			
1014	8,990.3986	5,368.3050	1029	9,015.8653	5,528.3825			

CURVE LIST			
POINT	NORTHING	EASTING	RADIUS
C5000	8,893.1985	5,326.3837	95'
C5001	9,077.9882	5,407.4628	95'
C5002	9,077.8940	5,443.6627	95'
C5003	8,986.9994	5,624.9890	95'

NOTE: COORDINATE POINTS ARE TO THE CENTER OF RADIUS.



LEGEND

- 1390 --- EXISTING MAJOR CONTOUR
- 1391 --- EXISTING MINOR CONTOUR
- 1350.00 PROPOSED SPOT ELEVATION
- ME MATCH EXISTING ELEVATION
- HP HIGH POINT
- (1000) COORDINATE POINT

Saved 06-04-2018 4:35:48 PM by CSL
 Plot Scale: 1" = 20' (17-2018) 2/20/2018 2:20:03 PM by CSL
 C:\wms\csw\18017-000\18017-000-C04-BIKE_PATH

Revision: _____ By: _____ Date: _____

CADILLAC LAKE 2ND ADDITION
BIKE PATH IMPROVEMENTS
BIKE PATH PLAN

GARY JANZEN, P.E. - CITY ENGINEER
 CITY OF WICHITA PROJECT NO. 472-85400

PROFESSIONAL ENGINEERING CONSULTANTS, P.A.
 303 SOUTH TOPEKA WICHITA, KS 67202
 316-262-2691 www.pec1.com

Designed by: CSB, RMG
 Drawn by: CSL

Job No. 35-180017-000
 Date: APRIL 2018

Sht. 4 of 12