

# GENERAL NOTES:

- The Contractor shall comply with all applicable safety regulations. All construction shall be completed following current City Standard Specifications and Special Provisions.
- Contractor will be required to provide notice to utility companies a minimum of seventy-two (72) hours prior to any excavation, as follows:  
 Kansas One-Call 687-2470  
 The Contractor must notify the following in case of an emergency:  
 AT&T 1-800-246-8464  
 Black Hills Energy 1-800-694-8989  
 City of Wichita Water & Sewer 1-316-219-8921  
 City of Wichita Stormwater 1-316-268-4090  
 City of Wichita Traffic 1-316-268-4034  
 Cox Communications 1-888-249-3530  
 Kansas Gas Service 1-888-462-4950  
 Westar Energy 1-800-544-4857
- Utility service lines, poles, etc. are to be adjusted as necessary by others prior to construction unless the plans specifically call for their adjustment by the Contractor or unless the plans specifically identify a utility to be adjusted by its owner during construction. Existing utilities and their location, as shown on the plans, represent the best information obtainable for design. The Contractor will be required to work around existing utilities within the right-of-way which do not conflict with proposed construction.
- Rubble from the removal of miscellaneous structures and excess excavation which is to be wasted shall be disposed of on sites to be provided by the Contractor. These sites shall be approved by the Engineer as to suitability, appearance and site location. Locations, in the opinion of the Engineer, that will leave an unsightly appearance will not be approved. All disposal sites must be approved by the Kansas Department of Health and Environment. Material either stockpiled or disposed of in a flood plain will require a Kansas State Board of Agriculture permit. Any material dumped in waters of the United States or wetlands is subject to U.S. Corps of Engineers permitting regulations. Any material buried or stockpiled beyond approved construction limits will require additional archaeological investigations unless buried in a previously approved borrow location.
- Trees and shrubs in public right-of-way which are in direct conflict with proposed new construction shall be removed by the Contractor with the City Engineer's approval. Trees and shrubs which are not in direct conflict with proposed new construction shall be saved and protected from damage.
- The Contractor shall give all property owners and/or tenants of developed property abutting the construction of this project a minimum of ten (10) days notice prior to start of construction.
- The Contractor shall be responsible for preserving property irons. The Contractor will be required to re-establish any property irons which are damaged or destroyed by his construction operations. Such irons shall be re-established by a licensed land surveyor in accordance with state laws.
- The Engineering Division shall field locate water valve one time during construction when requested by the Contractor. It shall be the Contractor's responsibility to preserve such field locations during the construction process. Water valves, valve boxes or fire hydrants damaged during construction shall be repaired by Contractor at his own expense. Valve boxes and water meters within the project limits shall be adjusted to match field grades by the contractor.
- If traffic will be impacted by construction, a traffic control plan must be submitted and approved by the City Traffic Engineer, Brian Coon at [traffic@wichita.gov](mailto:traffic@wichita.gov) before construction can begin. The Contractor shall be responsible for all traffic control measures to facilitate construction. All construction zone markings and signage shall conform to the latest version of Manual on Uniform Traffic Control Devices (MUTCD) as published by the US Dept. of Transportation, Federal Highway Administration. All costs associated with construction markings and signage shall be the Contractors responsibility.
- All elevations shown are NAVD 88.
- All areas disturbed during construction that will not be under proposed pavement shall be restored to match existing conditions.

- Any sidewalk, drive approach, curb, or street pavement removed to construct project must have a pavement cut permit and be replaced by the City contractor. Permits can be obtained by calling 316-268-4501 or 316-268-4480.
- All stubs and capped pipes shall be located with green plastic tape in the same manner as risers.
- Connecting to Existing Manholes:  
 Prior to laying sewer lines using existing stubs in existing manholes, the Contractor shall expose and verify the elevation, grade and alignment of existing stubs and notify the Engineer of any deviation from the plans. Where the stub is unusable due to elevation grade or alignment, the Contractor shall remove the stub and plug the hole, and reshape the existing manhole invert to provide smooth flow. Where connection to an existing manhole that does not have an existing stub, the Contractor shall core cut into existing manhole wall to make connection using approved water stop gasket, and reshape the existing manhole invert to provide smooth flow. The cost of connect to existing manholes is incidental to the project.
- Contractor shall limit the extent of trench open overnight and weekends to less than 50 feet.
- Contractor shall provide positive drainage away from all manhole covers.
- The Contractor shall prevent any construction debris from entering the existing sanitary sewer during construction.
- The Contractor shall be responsible for maintaining continuous flow of sewage through construction. Contractors proposed method for maintaining sewage flow shall be submitted and approved by the Sewer Maintenance Division (316-268-4073) prior to starting and by-passing of sewage flows.
- Any over excavation from manhole and pipe removal shall be backfilled with AB-3 compacted to 90-95% ASTM D698.
- The Contractor shall protect from damage and support existing utilities through construction as approved by the utility owner and the Engineer at the contractor's expense.
- Contractor shall grade around exposed manholes at a 1:1 slope. Manholes set lower than existing grade shall have a 9" berm constructed around manhole to prevent infiltration into sanitary sewer system. Cost of dirt, labor, equipment, etc. to be incidental to cost of manhole. Easements shall be graded with the street improvement project as part of the mass grading plan.
- All areas disturbed during construction shall be seeded at 300 lbs./acre with Rye Grass immediately following construction in that area. Contractor shall prepare ground per City Specifications.
- All existing and proposed erosion control measures including silt fencing, erosion control mat, straw bales, inlet barriers, and const. entrance shall be maintained throughout construction by the contractor and until project is accepted by the City of Wichita. The on-site engineer shall complete weekly reports on the status of erosion control measures. The contractor shall be required to comply with maintenance and/or replacement of erosion control measures as determined by the on-site engineer until project is accepted by City of Wichita. Maintenance and/or replacement of erosion control measures to be paid by L.S. bid item "Site Restoration".
- All excess excavation shall remain on-site and shall be stockpiled or spread at a location determined by the engineer.
- The developer for this project is John E. Dugan Family Partnership.

# LATERAL 67, CIS SANITARY SEWER IMPROVEMENTS to serve **SKYWAY WEST 5TH ADD. - PH 1** CITY OF WICHITA, KANSAS

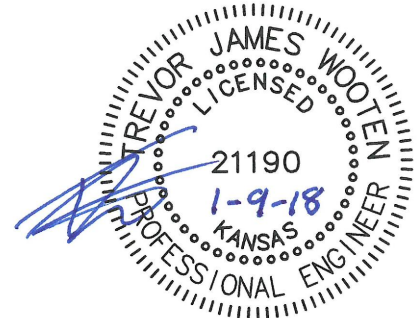
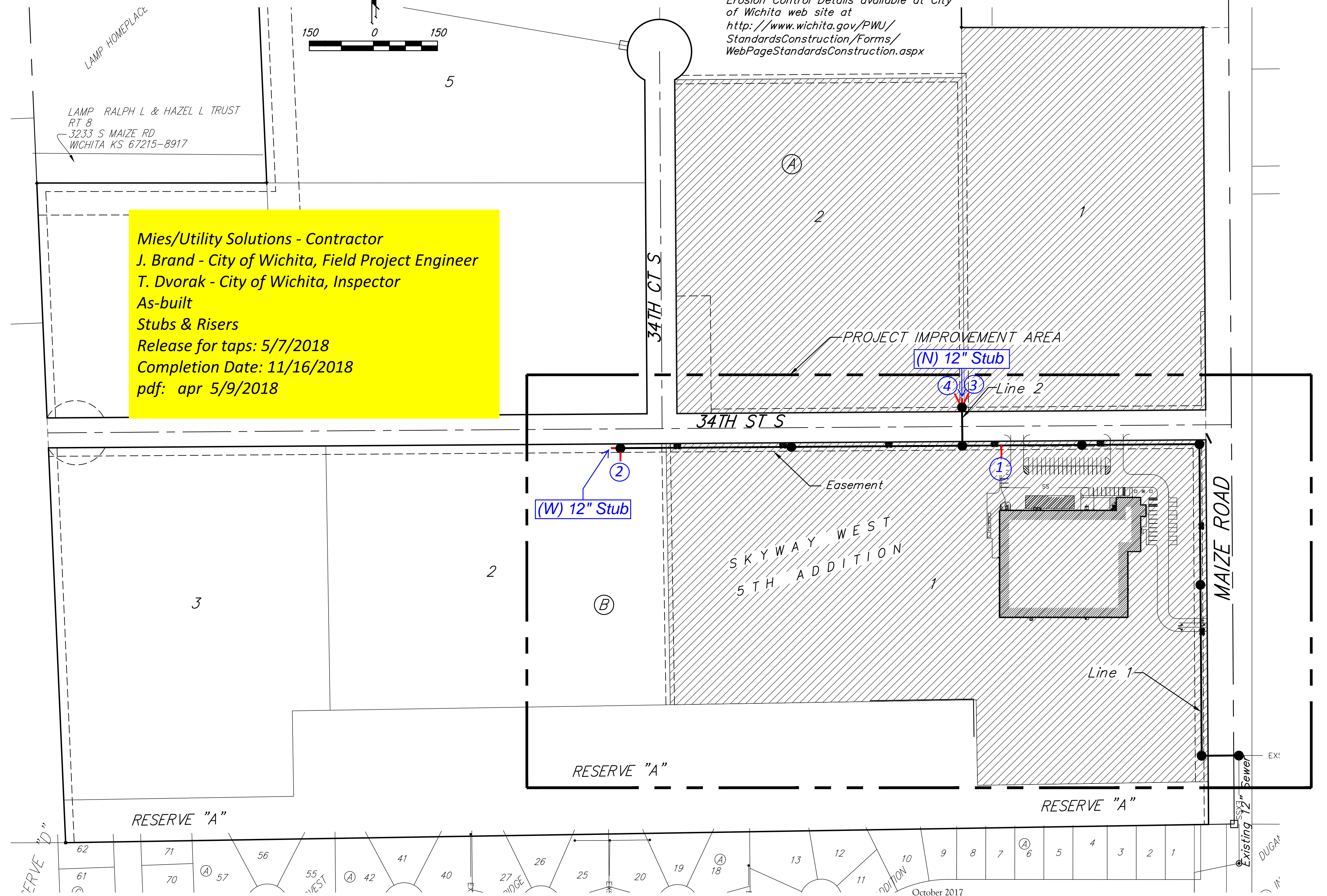
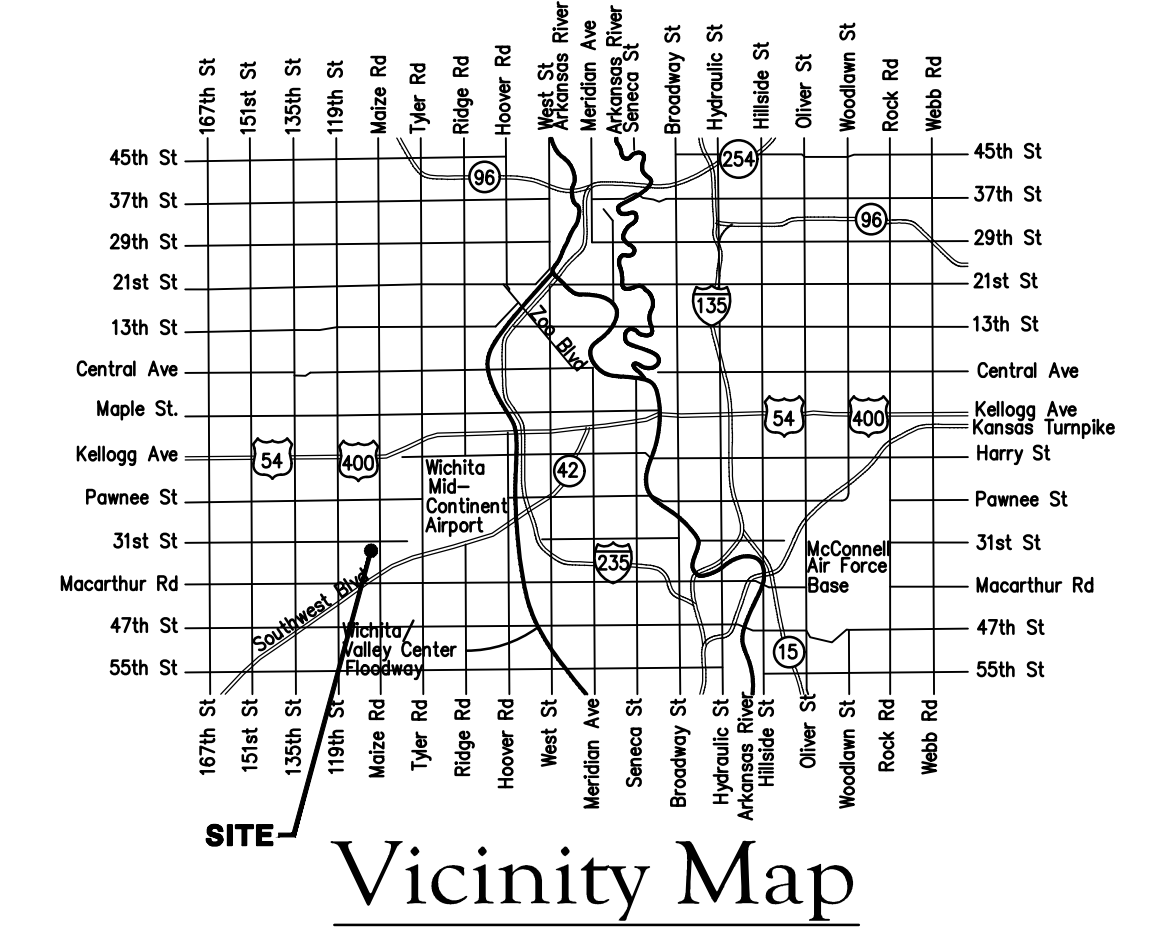
## Benchmarks

BM #1: WEST OF INTERSECTION OF MAIZE ROAD & 31ST STREET SOUTH, CITY OF WICHITA BENCHMARK DISK, SOUTHEAST CORNER OF HUBGUARD OF R.C.B.C., 330.9' WEST & 16.8' SOUTH OF THE NE COR., NE 1/4, SEC. 7, TWP. 28-S, R-1-W. ELEV. = 1331.90 NAVD88

Gary Janzen, P.E. City Engineer  
 Project Number 468-85249  
 O.C.A. Number 744456

## Sheet Index

Title Sheet	1
Line 1	2-4
Line 2	4
Erosion Control/Grading Plan	5
Copy of Plat	6



Benefit District



Baughman Company, P.A. 315 Ellis St. Wichita, KS 67211 P 316-262-7271 F 316-262-0149  
 ENGINEERING | SURVEYING | PLANNING | LANDSCAPE ARCHITECTURE





**BENCHMARK:**  
 BM #1: WEST OF INTERSECTION OF  
 MAIZE ROAD & 31ST STREET SOUTH,  
 CITY OF WICHITA BENCHMARK DISK,  
 SOUTHEAST CORNER OF HUBGUARD OF  
 R.C.B.C., 330.9' WEST & 16.8' SOUTH  
 OF THE NE COR., NE1/4, SEC. 7, TWP.  
 28-S, R-1-W. ELEV. = 1331.90  
 NAVD88

SKYWAY WEST  
 5TH ADDITION

Riser #2, Line 1  
 Lot 2, Blk B  
 Dist. from Main to Riser : 10' Lt.  
 Dist. from USMH: @ MH

Sta. 21+71.2, End Line 1  
 Construct MH, Standard (5')  
 1 - Pipe Stub, 12" (W)  
 1 - Pipe Stub, 6"  
 W/ Riser Pipe Assy. (S)  
 Top Elev. = 1338.00  
 N=10,879.60 E=18,582.57

Sta. 17+71.2, Line 1  
 Construct MH, Standard (5')  
 Top Elev. = 1339.10  
 N=10,882.37 E=18,982.56

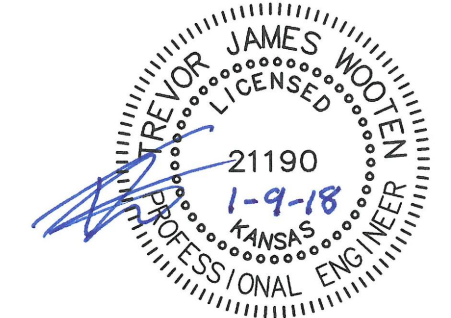
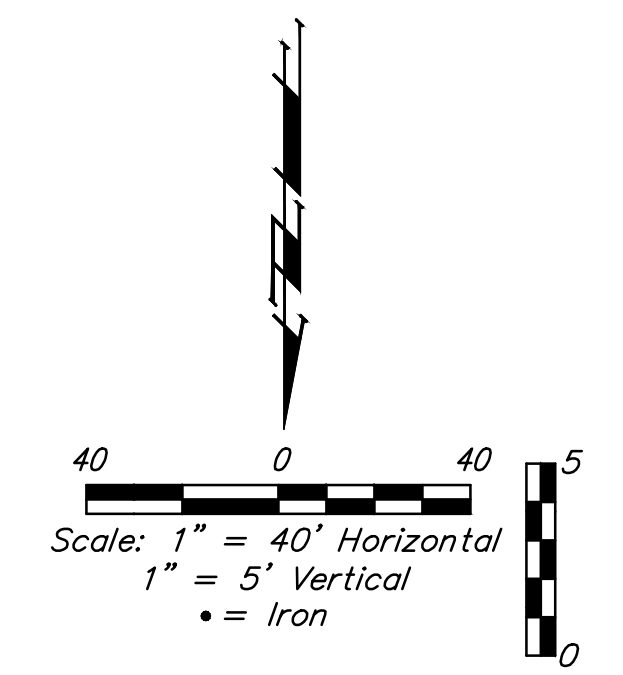
Sta. 13+71.2, Line 1  
 = Sta. 0+00, Line 2  
 Match Point  
 N=10,885.14 E=19,382.55

Sta. 0+90.0, End Line 2  
 Construct MH, Standard (5')  
 1 - Pipe Stub, 12" (N)  
 2 - Pipe Stub, 6"  
 W/ Riser Pipe Assy. (NE&NW)  
 Top Elev. = 1337.10  
 N=10,975.14 E=19,381.90

Riser #4, Line 2  
 Lot 2, Blk A  
 Dist. from Main to Riser : 10' Lt.  
 Dist. from USMH: @ MH

Riser #3, Line 2  
 Lot 1, Blk A  
 Dist. from Main to Riser : 10' Rt.  
 Dist. from USMH: @ MH

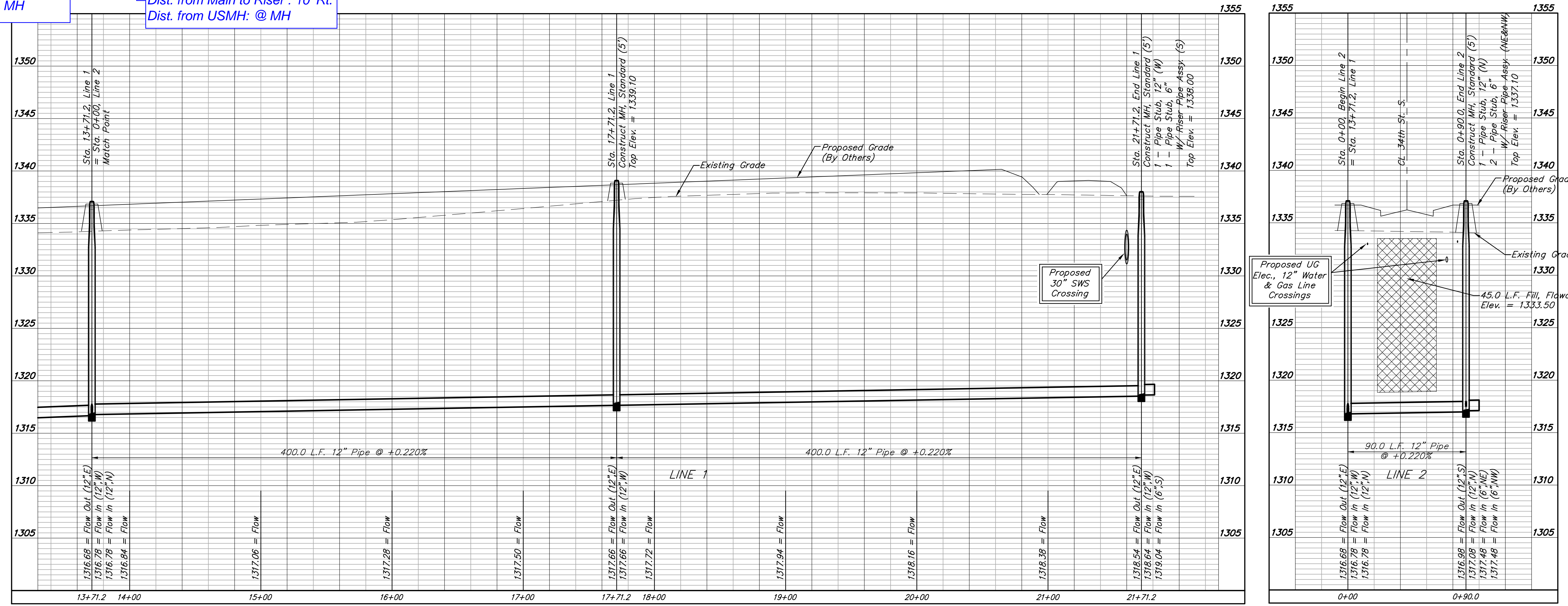
All trench and manhole excavation areas from  
 Sta. 13+71.2 to Sta. 21+71.2, Line 1 shall be  
 backfilled with sand. The sand backfill shall be  
 within two feet of existing grade and shall be  
 water-jetted and vibrated during backfilling. All  
 costs shall be paid for as L.F. "Fill, Sand  
 (Flushed & Vibrated)".



SEWER SERVICE TABLE

NUMBER	TYPE	LOCATION			FOR INFORMATION ONLY		
		LOT NO.	BLOCK NO.	LINE NO.	STATION DIRECTION	APPROXIMATE LENGTH 4" PIPE	
						VERTICAL	HORIZONTAL
2	6" Stub	2	B	1	21+71.2/Lt.	15.0'	10.0'
3	6" Stub	1	A	2	0+90.0/Rt.	15.5'	10.0'
4	6" Stub	2	A	2	0+90.0/Lt.	15.5'	10.0'

NOTE: Vertical Riser Pipe shall be extended to 2' minimum above ground water elevation and 4' maximum below proposed ground elevation.



Baughman Company, P.A.  
 1518 E. S. Wichita, KS 67211 P: 620-272-1111 F: 620-262-0149  
 JAMES W. BAUGHMAN, LICENSED PROFESSIONAL ARCHITECTURE  
 JAMES W. BAUGHMAN, LICENSED PROFESSIONAL ENGINEER  
 License No. 21190, State of Kansas, dated 1-9-18

SKYWAY WEST 5TH ADD. - PH 1  
**LINES 1&2**  
 SANITARY SEWER IMPROVEMENTS

