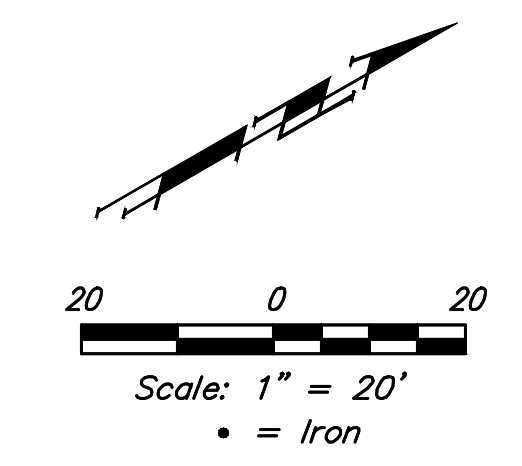


**BENCHMARKS:**

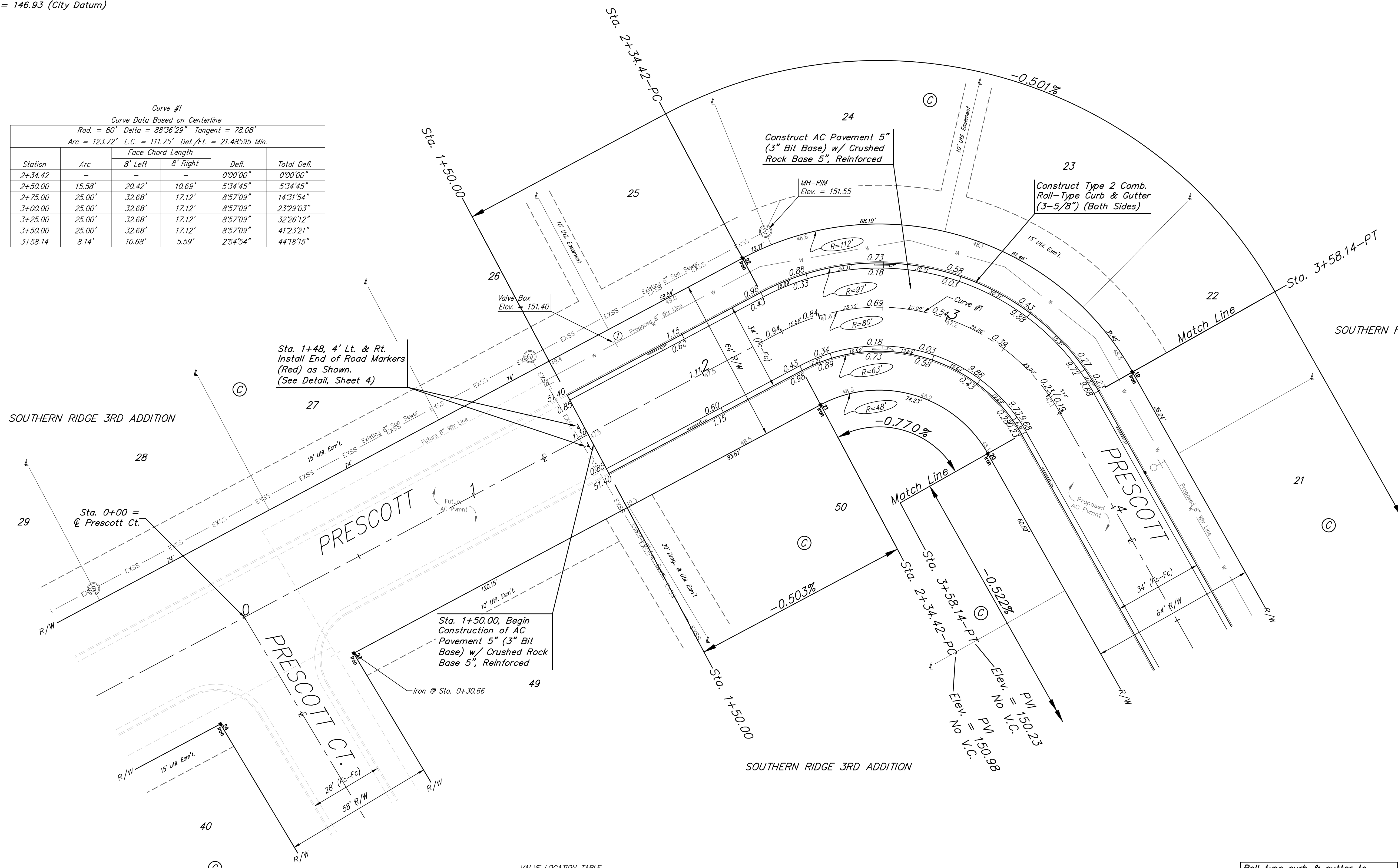
BM #1: "+" cut on sidewalk adjacent to manhole, east side of Lark Lane, north of Lot 1, Block B, Southern Ridge 3rd Addition.  
Elev. = 144.56 (City Datum)

BM #2: "+" cut on sidewalk adjacent to south line of curb inlet on east side of Lark Lane, near Lot 11, Block B, Southern Ridge 3rd Addition.  
Elev. = 146.93 (City Datum)



Curve #1  
Curve Data Based on Centerline  
Rad. = 80' Delta = 88°36'29" Tangent = 78.08'  
Arc = 123.72' L.C. = 111.75' Def./Ft. = 21.48595 Min.

Station	Arc	Face Chord Length		Defl.	Total Defl.
		8' Left	8' Right		
2+34.42	-	-	-	0'00'00"	0'00'00"
2+50.00	15.58'	20.42'	10.69'	5'34'45"	5'34'45"
2+75.00	25.00'	32.68'	17.12'	8'57'09"	14'31'54"
3+00.00	25.00'	32.68'	17.12'	8'57'09"	23'29'03"
3+25.00	25.00'	32.68'	17.12'	8'57'09"	32'26'12"
3+50.00	25.00'	32.68'	17.12'	8'57'09"	41'23'21"
3+58.14	8.14'	10.68'	5.59'	2'54'54"	44'18'15"



Sta. 1+48, 4' Lt. & Rt. Install End of Road Markers (Red) as Shown. (See Detail, Sheet 4)

Sta. 1+50.00, Begin Construction of AC Pavement 5" (3" Bit Base) w/ Crushed Rock Base 5", Reinforced

VALVE LOCATION TABLE

Valve Number	Baseline Station	Offset Distance	Offset Direction
1	1+75.88	26'	Rt.

Roll type curb & gutter to be constructed on the pavement on this sheet. Top of curb elevation are given for full height curb.



**Baughman** Prescott  
Southern Ridge 3rd Addition - Phase 5B  
Sta. 1+50.00 to Sta. 3+58.14

Baughman Company, P.A. 315 Ellis St. Wichita, KS 67211 P 316-262-7271 F 316-262-0149  
ENGINEERING | SURVEYING | PLANNING | LANDSCAPE ARCHITECTURE

PROJECT NUMBER 472-85304	DESIGN DMV	DRAWN JAK
REVISIONS:	APPROVED	DATE 7/08/18
	SCALE Noted	SHEET 5 OF 15

E:\Projects\Southern Ridge 3rd\Phase 5B\STR\_1804-E984\STR PLANS.dwg