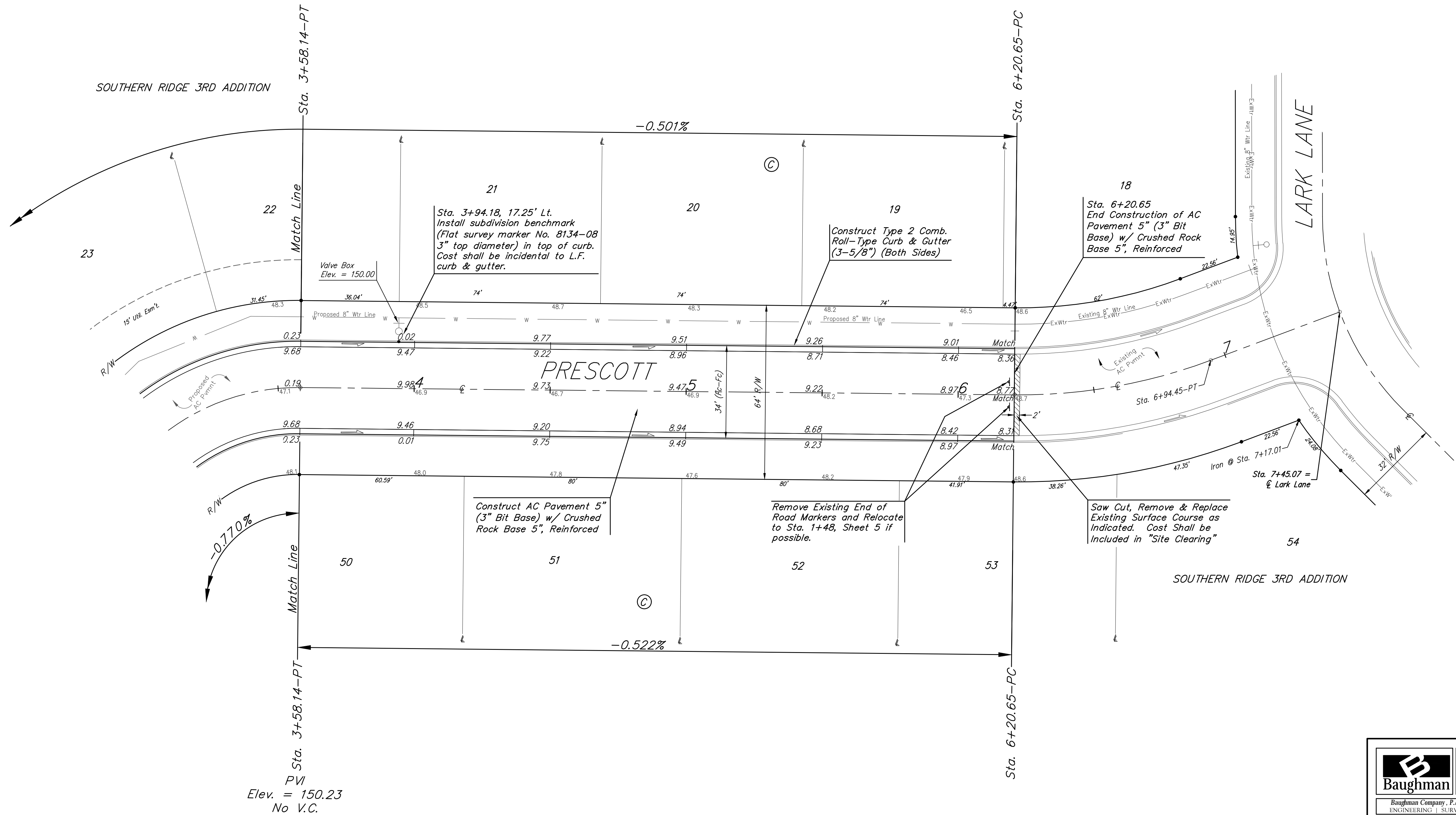
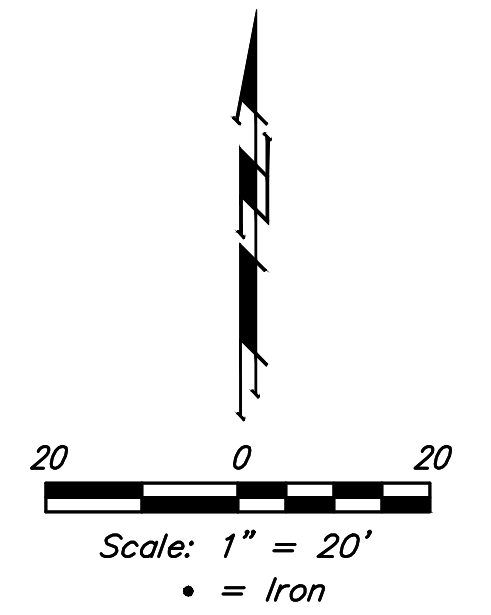


BENCHMARKS:

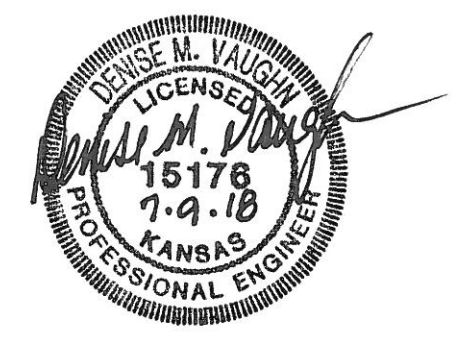
BM #1: "+" cut on sidewalk adjacent to manhole, east side of Lark Lane, north of Lot 1, Block B, Southern Ridge 3rd Addition.
Elev. = 144.56 (City Datum)

BM #2: "+" cut on sidewalk adjacent to south line of curb inlet on east side of Lark Lane, near Lot 11, Block B, Southern Ridge 3rd Addition.
Elev. = 146.93 (City Datum)



Subdivision Bench Marks		
Street & Station	Location Description	Elevation
Prescott 3+94.18, 17.25' Lt.	Adjacent to Fire Hydrant, Southwest Corner Lot 21, Block C	

Roll type curb & gutter to be constructed on the pavement on this sheet.
Top of curb elevation are given for full height curb.



Baughman		Southern Ridge 3rd Addition - Phase 5B	
		PRESCOTT	
		Sta. Sta. 3+58.14 to Sta. 6+20.65	
Baughman Company, P.A. 315 Ellis St. Wichita, KS 67211 P 316-282-7271 F 316-282-0149 ENGINEERING SURVEYING PLANNING LANDSCAPE ARCHITECTURE			
PROJECT NUMBER 472-85304	DESIGN DMV	DRAWN JAK	
REVISIONS:	APPROVED	DATE 7/09/18	
	SCALE Noted	SHEET	
			6 OF 15