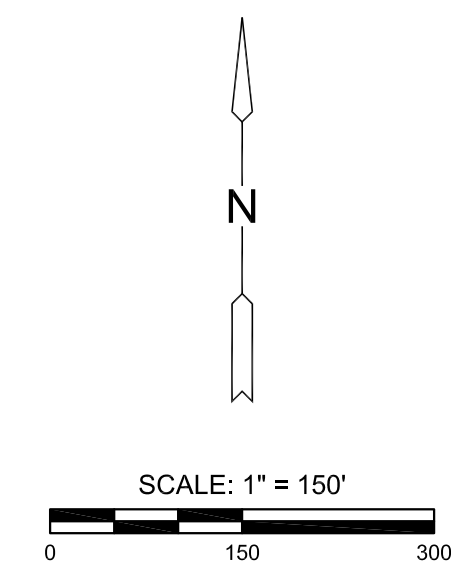
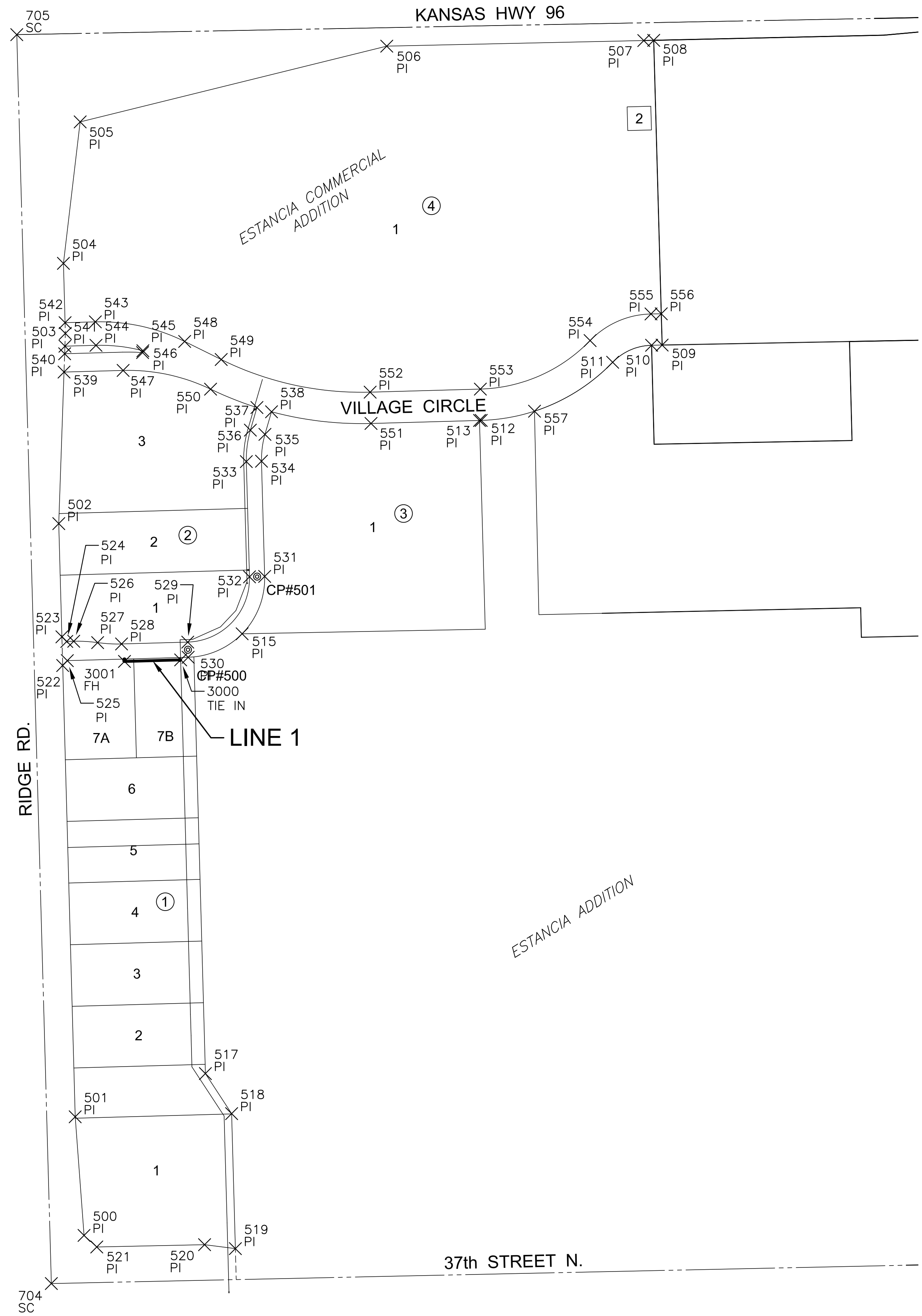


PLOTTED: Wednesday, July 18, 2018 @ 02:05PM

J:\PROJECTS\2018\1807010384_TRU_ESTANCIA_COMMERCIAL_18354_CADD\SHOTS\05_CIVIL\WTR\18354-05-3500.DWG



PLAT POINTS			
Point #	Northing	Easting	Desc.
500	1709683.12	1623023.34	PI
501	1709933.18	1623004.69	PI
502	1711183.70	1622970.07	PI
503	1711584.69	1622983.97	PI
504	1711732.38	1622979.88	PI
505	1712030.60	1623015.17	PI
506	1712190.24	1623661.75	PI
507	1712202.08	1624203.86	PI
508	1712202.55	1624224.76	PI
509	1711560.11	1624242.54	PI
510	1711559.69	1624220.29	PI
511	1711523.83	1624138.18	PI
512	1711401.29	1623860.98	PI
513	1711401.19	1623857.37	PI
515	1710951.44	1623356.76	PI
516	1710902.64	1623254.95	PI
517	1710024.33	1623279.27	PI
518	1709939.88	1623334.63	PI
519	1709655.27	1623342.51	PI
520	1709663.60	1623277.53	PI
521	1709658.73	1623050.19	PI
522	1710884.54	1622978.35	PI
523	1710945.02	1622976.67	PI
524	1710935.30	1622986.95	PI
525	1710894.82	1622988.07	PI
526	1710935.71	1623001.62	PI
527	1710932.85	1623052.04	PI
528	1710930.00	1623102.46	PI
529	1710933.86	1623242.08	PI
530	1710901.87	1623242.97	PI
531	1711072.41	1623404.31	PI
532	1711071.52	1623372.32	PI
533	1711314.41	1623365.60	PI
534	1711315.30	1623397.59	PI
535	1711371.84	1623404.85	PI
536	1711380.78	1623374.13	PI
537	1711428.45	1623388.01	PI
538	1711419.50	1623418.74	PI
539	1711503.24	1622981.15	PI
540	1711541.80	1622982.49	PI
541	1711557.75	1622983.04	PI
542	1711607.28	1622983.35	PI
543	1711609.05	1623047.21	PI
544	1711559.57	1623048.58	PI
545	1711548.17	1623147.44	PI

PLAT POINTS			
Point #	Northing	Easting	Desc.
546	1711544.24	1623146.80	PI
547	1711506.63	1623105.80	PI
548	1711567.77	1623235.56	PI
549	1711529.65	1623312.66	PI
550	1711467.17	1623290.22	PI
551	1711394.85	1623628.56	PI
552	1711460.83	1623626.73	PI
553	1711467.26	1623859.15	PI
554	1711569.58	1624090.61	PI
555	1711625.68	1624219.05	PI
556	1711626.09	1624240.72	PI
557	1711420.66	1623973.36	PI
704	1709581.66	1622954.40	SC
705	1712214.54	1622881.50	SC
706	1712264.39	1625524.30	SC
707	1709638.05	1625585.96	SC

WATER POINTS			
Point #	Northing	Easting	Desc.
3000	1710896.43	1623227.11	TIE IN
3001	1710893.15	1623108.66	FH

CONTROL POINTS

CP #500
PK NAIL
N=1710917.87, E=1623242.53
ELEV.=1334.48

CP #501
PK NAIL
N=1711071.96, E=1623388.32
ELEV.=1335.06

The Project Horizontal Datum is based on the NAD83, Kansas State Plane Coordinate System, South Zone, (US Survey Feet Definition), with a Combined Adjustment Factor (CAF) of 1.0001200144. All coordinates and dimensions shown on these plans are modified to Ground values. The following equations can be used for conversion:
Ground Coordinates to State Plane Coordinates = Ground x 1/CAF
State Plane Coordinates to Ground Coordinates = State Plane x CAF

Vertical Datum: NAVD 88



EVERY ATTEMPT HAS BEEN MADE TO INSURE ALL COORDINATE VALUES SHOWN ARE AN ACCURATE AND TRUE REPRESENTATION OF THE CURRENT PLANS. ALL VALUES ARE TO BE CONFIRMED WITH THE FINAL SIGNED PLAN SET BEFORE USE.



WATER DISTRIBUTION PLANS FOR
ESTANCIA COMMERCIAL ADDITION
TRACT 7A & TRACT 7B

©2018
MKEC Engineering
All Rights Reserved
www.mkec.com
These drawings and their contents, including, but not limited to, all concepts, designs, & ideas are the exclusive property of MKEC Engineering (MKEC), and may not be used or reproduced in any way without the express consent of MKEC.

BUBBLE MAP

PROJECT NO.	448-90911	
DATE	JULY 2018	
SCALE	N/A	
DESIGNED	DRAWN	CHECKED
RWB	RWB	SPE
1	ADDED HYDRANT	07/18/18
NO.	REVISION	DATE