

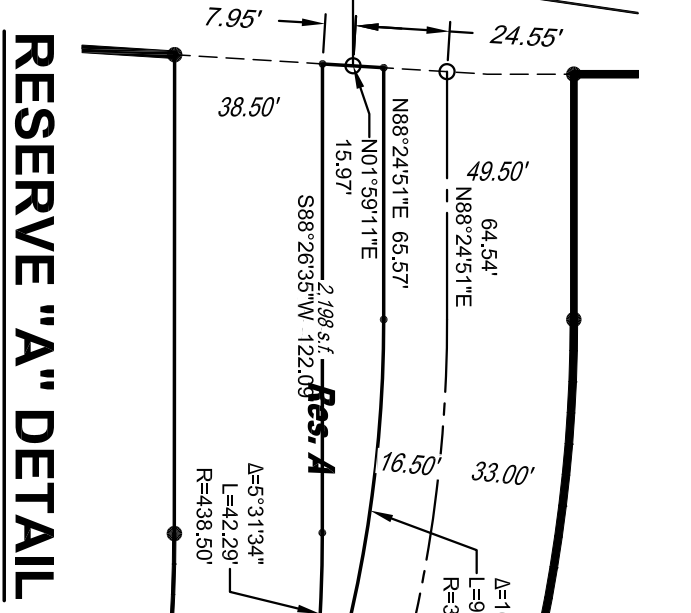
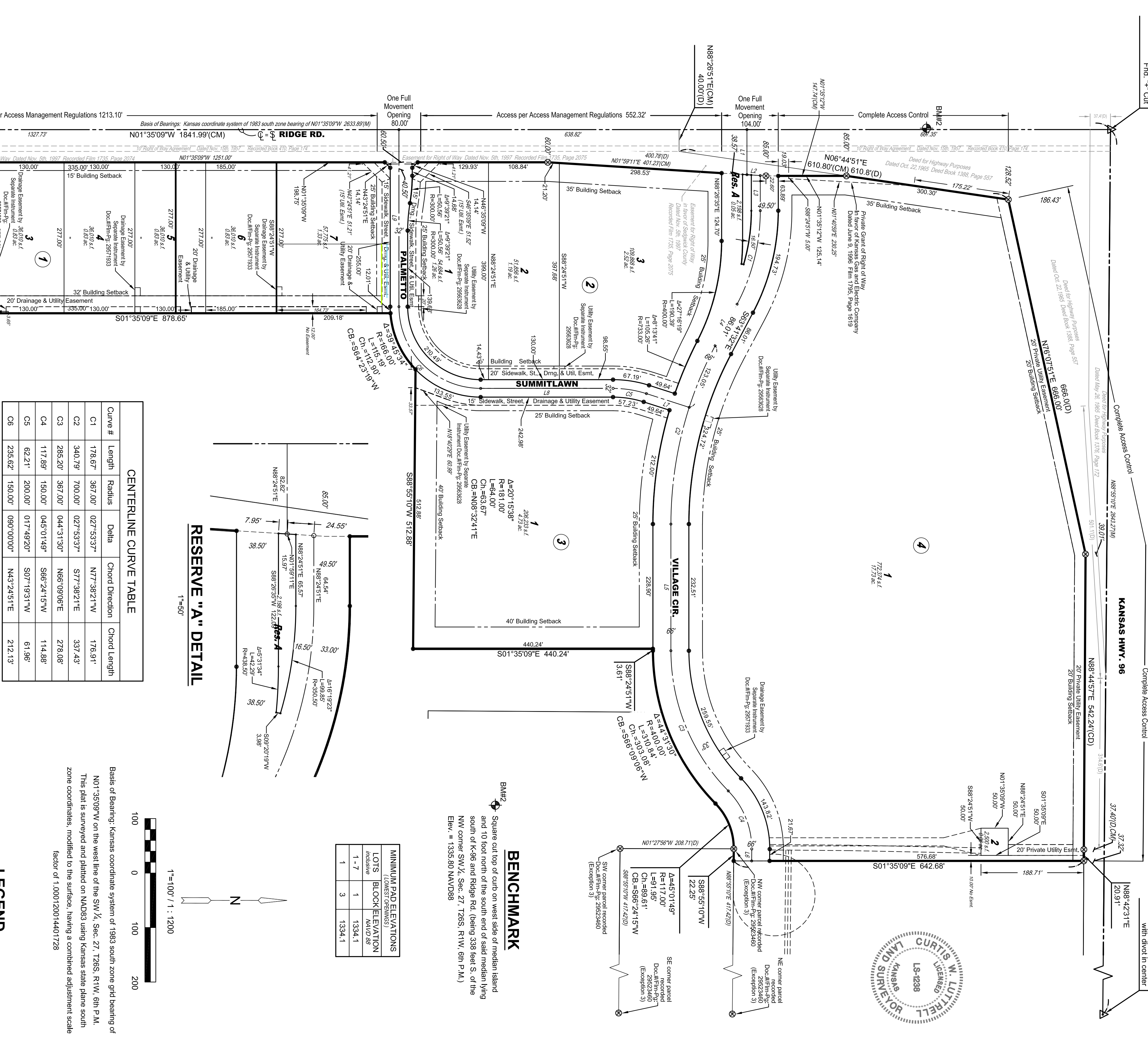
FINAL PLAT

ESTANCIA COMMERCIAL ADDITION

AN ADDITION TO WICHITA, SEDGWICK COUNTY, KANSAS

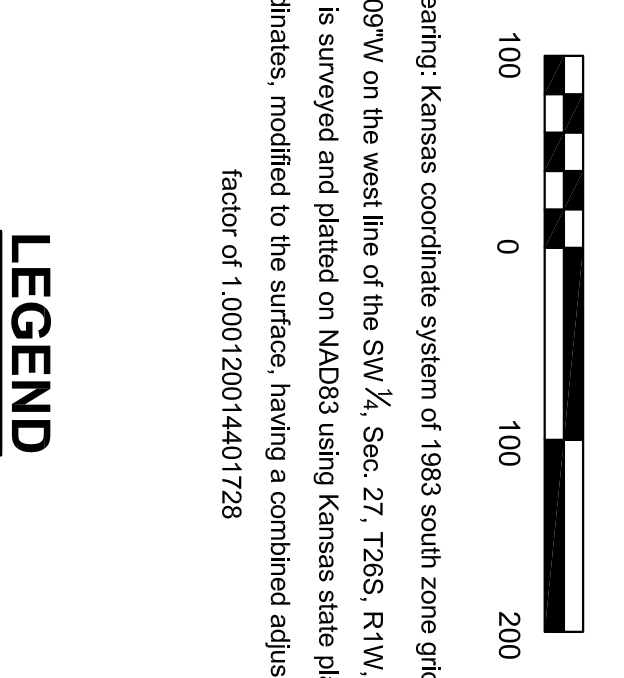
NW cor., SW 1/4, Sec. 27,
T26S, R1W, 6th P.M.
Fnd. "+ CUI"

NE cor., SW 1/4, Sec. 27,
T26S, R1W, 6th P.M.
Fnd. Limestone 1.5' deep
with diol in center



Curve #	Length	Radius	Delta	Chord Direction	Chord Length
C1	178.67'	367.00'	027°53'37"	N77°38'21"W	176.91'
C2	340.79'	700.00'	027°53'37"	S77°38'21"E	337.43'
C3	285.20'	367.00'	044°31'30"	N66°09'00"E	278.08'
C4	117.89'	150.00'	045°01'48"	S66°24'15"W	114.88'
C5	62.21'	200.00'	017°49'20"	S07°19'31"W	61.96'
C6	235.62'	150.00'	090°00'00"	N43°24'51"E	212.13'

Line #	Length	Direction
L1	82.82'	N88°24'51"E
L2	24.55'	N01°59'11"E
L3	64.54'	N88°24'51"E
L4	86.01'	S63°41'32"E
L5	232.51'	N88°24'51"E
L6	21.98'	N88°55'10"E
L7	82.47'	S16°14'11"W
L8	242.98'	S01°35'09"E
L9	325.00'	N88°24'51"E



LOTS (BLOCK/STREETS)	MINIMUM PAD ELEVATION MAVD @8'
1-7	1334.1
1	1334.1

BENCHMARK
 BM#2 Square cut top of curb on west side of median island and 10 foot north of the south end of said median wing south of K-96 and Ridge Rd. (being 338 feet S. of the NW corner SW 1/4, Sec. 27, T26S, R1W, 6th P.M.)
 Elev. = 1335.80 (NAVD88)

ACCESS CONTROLS NOTE
 Access Management Regulations
 Access points to lots shall be placed accordingly. The minimum distance between full turning movement drives shall be 400 feet. The minimum distance between a right in/out drive and either another right in/out drive or a full turning movement drive shall be 200 feet. Distances being measured centerline to centerline. Final placement of drive locations shall be reviewed and approved by the City Traffic Engineer.

