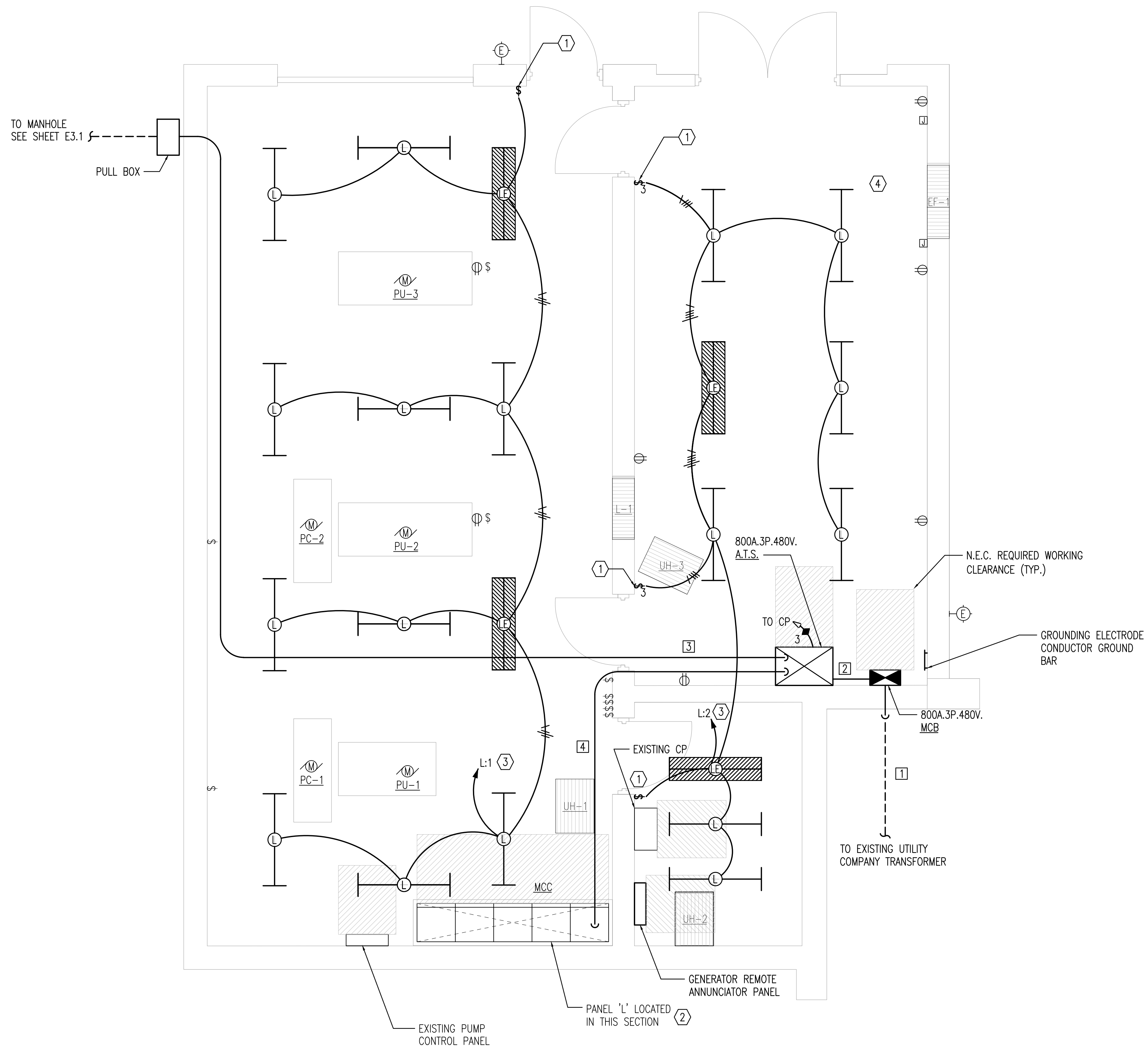
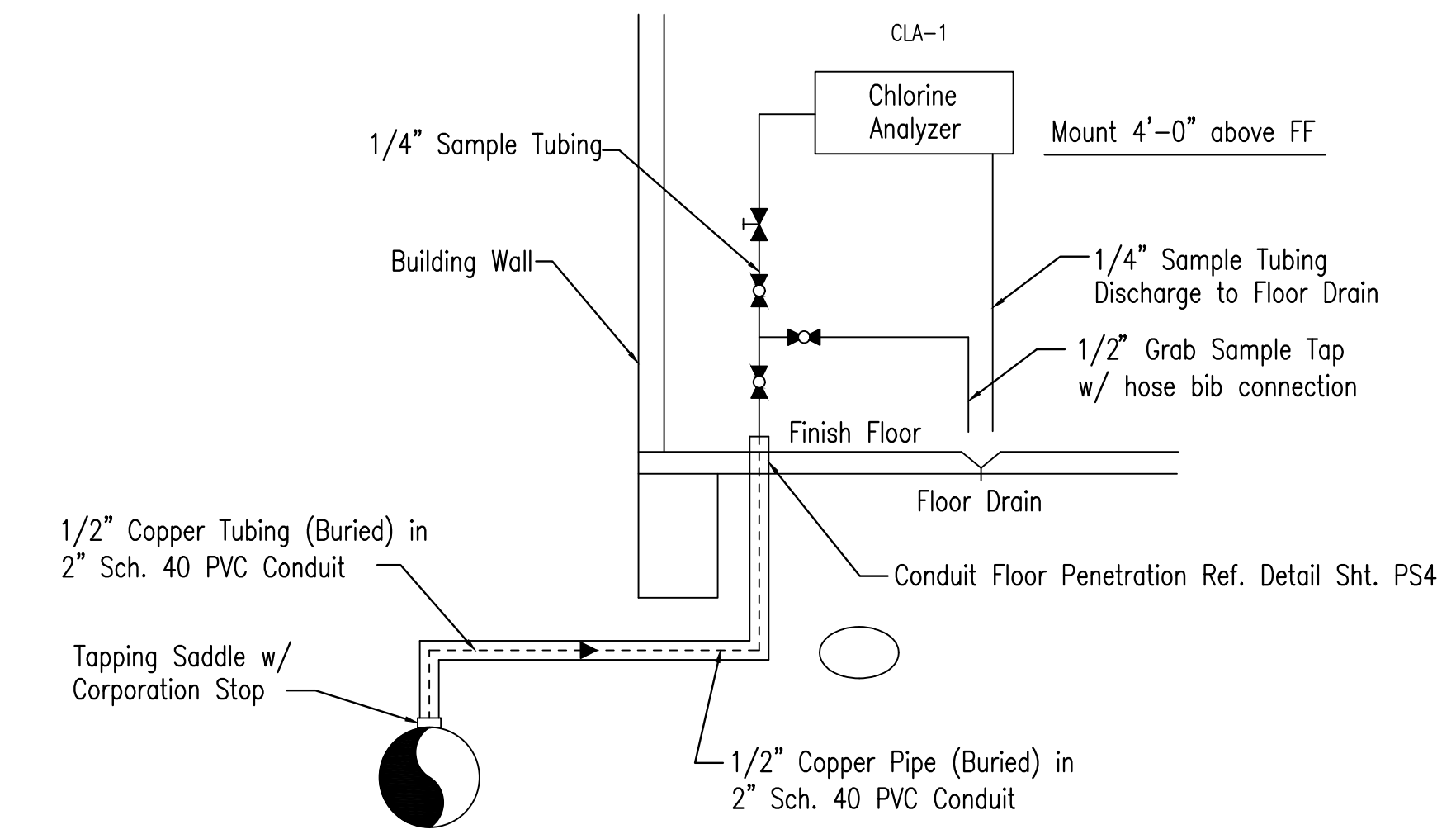


Saved 06-14-2018 10:36:52 AM by MICHAEL LEE  
 Plt Scale 1:1 06-19-2018 8:01:15 AM by JMW  
 C:\Wichita-Ford\2008\06030\000\Elec\Drawings\06030-006-E4.2 ELECTRICAL POWER PLAN - PROPOSED



- PLAN NOTES:**
- BRANCH CIRCUITS ARE INDICATED AS ONE CIRCUIT HOME RUNS WITH INDIVIDUAL NEUTRALS. A MAXIMUM OF THREE CIRCUITS (MAXIMUM OF THREE PHASE CONDUCTORS) MAY BE GROUPED IN A SINGLE CONDUIT. WHERE MULTIPLE CIRCUITS ARE LOCATED IN THE SAME RACEWAY, JUNCTION BOX OR ENCLOSURE, NEUTRALS SHALL BE MARKED OR LABELED TO INDICATE WHICH CIRCUIT THEY ARE ASSOCIATED WITH. SEE SPECIFICATION SECTION "LOW VOLTAGE ELECTRICAL POWER CONDUCTORS AND CABLES" FOR ADDITIONAL INFORMATION.
  - A GROUND CONDUCTOR SIZED PER N.E.C. ARTICLE 250 IS REQUIRED IN ALL CONDUITS.
  - FOR CONNECTION REQUIREMENTS TO MECHANICAL UNITS, SEE MECHANICAL EQUIPMENT CONNECTION SCHEDULE.
  - ALL PENETRATIONS IN THE RATED WALLS AND CEILINGS SHALL BE SEALED WITH A MATERIAL CAPABLE OF PREVENTING THE PASSAGE OF FLAMES AND HOT GASES. THE SEALANT SHALL HAVE A T-RATING OF ONE HOUR.
  - ALL PIPING, CONDUIT, AND OUTLET BOXES (ELECTRIC, TELEPHONE, COMPUTER, ETC.) IN THE RATED WALLS OR CEILING SHALL BE CONSTRUCTED OF NON-COMBUSTIBLE MATERIAL.
  - OUTLET BOXES (ELECTRIC, TELEPHONE, COMPUTER, ETC.) SHALL BE LIMITED TO TWO OUTLET BOXES PER STUD SPACE. OUTLET BOXES ON OPPOSITE SIDES OF THE RATED WALLS SHALL BE SEPARATED BY A HORIZONTAL DISTANCE OF 24 INCHES.

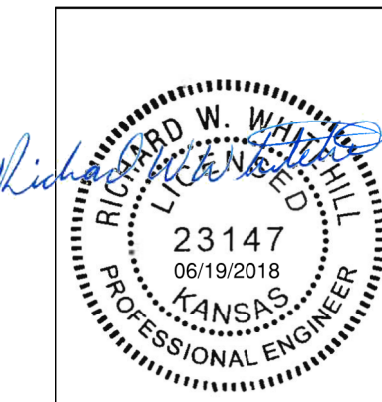
- KEYED NOTES:**
- REPLACE EXISTING SWITCH IN CURRENT LOCATION.
  - SQUARE D TYPE NQOB
  - REWORK EXISTING CIRCUIT AS NECESSARY.
  - REPLACE EXISTING CHLORINE ANALYZER THIS LOCATION. CONNECT TO EXISTING SAMPLE SUPPLY CONNECTION. NEW TUBING TO BE COMPATIBLE WITH CHLORINE. SEE DETAIL 1, THIS SHEET FOR CONNECTION DETAILS.



CHLORINE ANALYZER SCHEMATIC  
NO SCALE

**A ELECTRICAL PLAN - PROPOSED**

0' 1' 2' 4' 3/8"=1'-0"



No.	Revision	By	Date
PUMP STATION 37TH ST GENERATOR <b>ELECTRICAL PLAN - PROPOSED</b> MIKE JACOBS - SUPERINTENDENT OF PRODUCTION AND PUMPING CITY OF WICHITA PROJECT NO. 448-90903			
		PROFESSIONAL ENGINEERING CONSULTANTS, P.A. 303 SOUTH TOPEKA WICHITA, KS 67202 316-262-2691 www.pec1.com	
Designed by RWW	Job No. 06030-006	Sht. E4.2	
Drawn by JBG	Date June 2018		