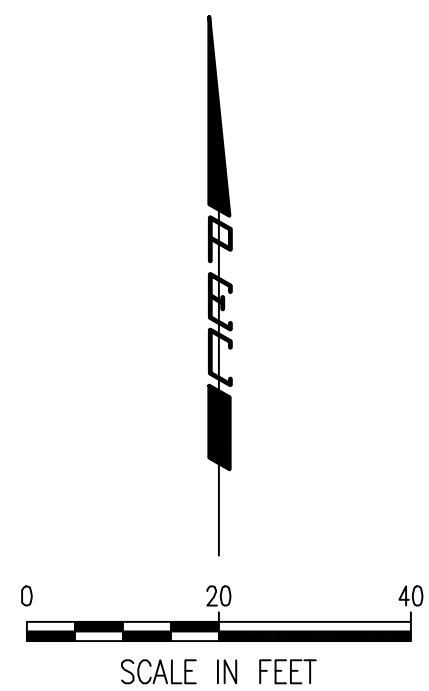


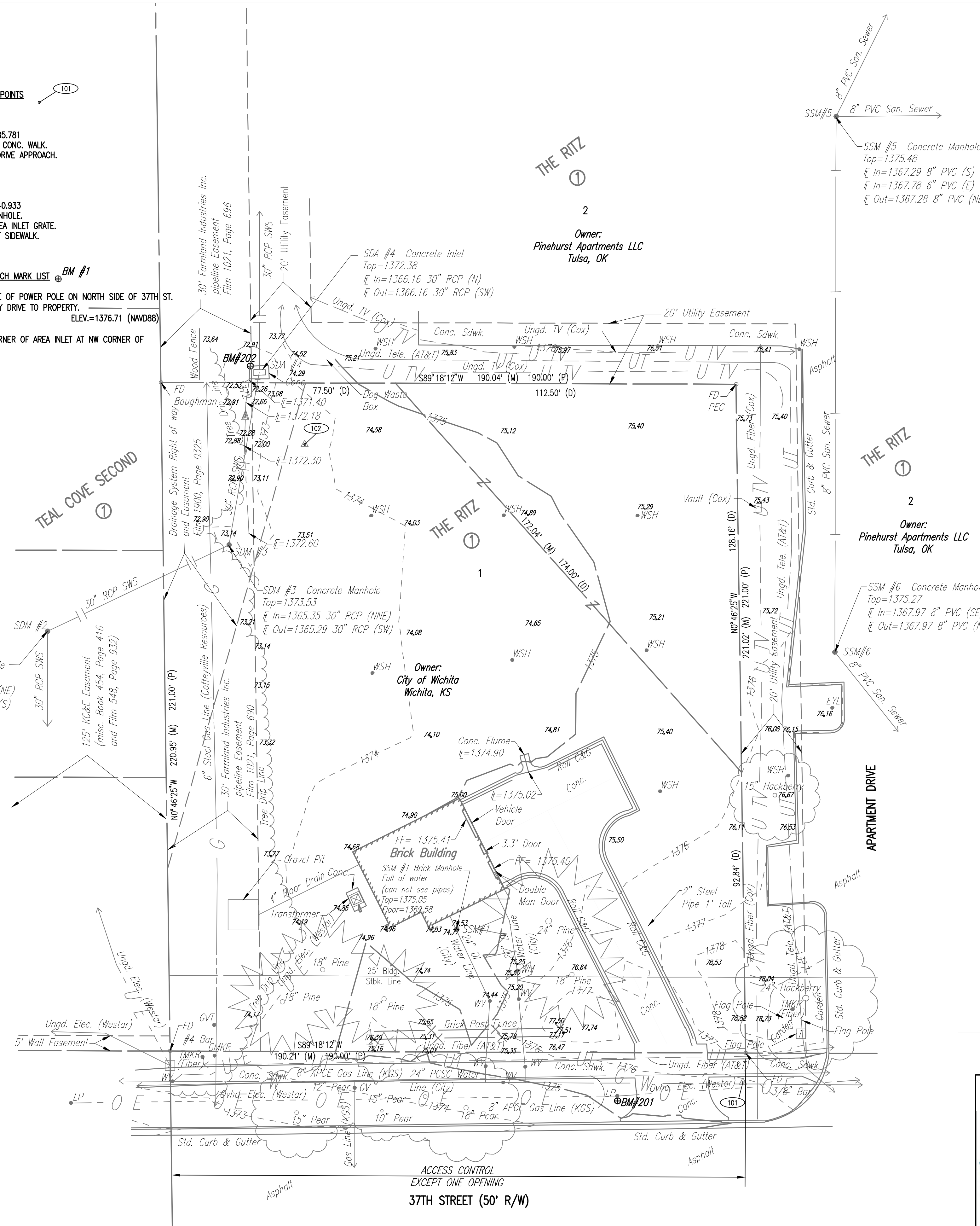
Saved 06-19-2018 11:02:50 AM by DAR
 Plot Scale 1:1 06-19-2018 11:17:06 AM by RWW
 C:\Wichita-First\2006\06030\006\Drawings\06030-006-C... EXISTING CONDITIONS



- CONTROL POINTS**
- Pt. No. 101
 1/2" REBAR W/ BLUE CAP
 N: 1,710,067.135, E: 1,672,785.781
 1. 1.80' SOUTH TO SOUTH EDGE CONC. WALK.
 2. 11.31' WEST TO EAST EDGE DRIVE APPROACH.
 3. 42.10' WSW TO BMK 201.
- Pt. No. 102
 1/2" REBAR W/ BLUE CAP
 N: 1,710,277.883, E: 1,672,640.933
 1. 41.70' SW TO CENTER OF MANHOLE.
 2. 28.20' NW TO CENTER OF AREA INLET GRATE.
 3. 50.00' NE TO SW CORNER OF SIDEWALK.

- BENCH MARK LIST**
- BM #201 - RR SPIKE IN SOUTH FACE OF POWER POLE ON NORTH SIDE OF 37TH ST. NORTH & WEST OF ENTRY DRIVE TO PROPERTY.
 ELEV.=1376.71 (NAVD88)
- BM #202 - CHISELED "d" ON NW CORNER OF AREA INLET AT NW CORNER OF PROPERTY.
 ELEV.=1372.36 (NAVD88)

- LEGEND**
- △ Monument/Horizontal Control Point
 - Deciduous Tree
 - Coniferous Tree
 - ⊕ BM Bench Mark/Vertical Control Point
 - EYL Electrical Yard Light
 - LP Light Pole
 - ☑ Transformer
 - ☑ Electrical Pedestal
 - GMRK Gas Line Marker
 - GVT Gas Vent Pipe
 - SS Sanitary Sewer Manhole
 - SWS Storm Water Sewer Manhole
 - SDA Storm Water Drain Area Inlet
 - ☑ Telephone Pedestal
 - TMKR Telephone Marker
 - WM Water Meter
 - WV Water Valve
 - WSH Water Sprinkler Head
 - Ditch Flowline
 - Tree Drip Line
 - Fence Types
 - Buried Cable TV Line
 - Overhead Electric Line
 - Buried Electric Line
 - Buried Telephone Line
 - Gas Line
 - Sanitary Sewer Line
 - Storm Water Sewer Line
 - Waterline



- SSM #1 Brick Manhole
 Full of water (can not see pipes)
 Top=1375.05
 Floor=1369.58
- SDM #2 Concrete Manhole
 Top=1371.74
 In=1363.89 30" RCP (NE)
 Out=1363.22 30" RCP (S)
- SDM #3 Concrete Manhole
 Top=1373.53
 In=1365.35 30" RCP (NNE)
 Out=1365.29 30" RCP (SW)
- SDA #4 Concrete Inlet
 Top=1372.38
 In=1366.16 30" RCP (N)
 Out=1366.16 30" RCP (SW)
- SSM #5 Concrete Manhole
 Top=1375.48
 In=1367.29 8" PVC (S)
 In=1367.78 6" PVC (E)
 Out=1367.28 8" PVC (NE)
- SSM #6 Concrete Manhole
 Top=1375.27
 In=1365.97 8" PVC (SE)
 Out=1367.97 8" PVC (N)
- SSM #5 Concrete Manhole
 Top=1375.48
 In=1367.29 8" PVC (S)
 In=1367.78 6" PVC (E)
 Out=1367.28 8" PVC (NE)
- SSM #6 Concrete Manhole
 Top=1375.27
 In=1365.97 8" PVC (SE)
 Out=1367.97 8" PVC (N)
- SSM #6 Concrete Manhole
 Top=1375.27
 In=1367.97 8" PVC (SE)
 Out=1367.97 8" PVC (N)

ACCESS CONTROL
 EXCEPT ONE OPENING
 37TH STREET (50' R/W)



No.	Revision	By	Date
PUMP STATION 37TH ST GENERATOR EXISTING CONDITIONS			
MIKE JACOBS - SUPERINTENDENT OF PRODUCTION AND PUMPING CITY OF WICHITA PROJECT NO. 448-90903			
PROFESSIONAL ENGINEERING CONSULTANTS, P.A. 303 SOUTH TOPEKA WICHITA, KS 67202 316-262-2891 www.pec1.com			
Designed by DRC	Job No. 06030-006	Sht. C1.0	
Drawn by SAD	Date June 2018		