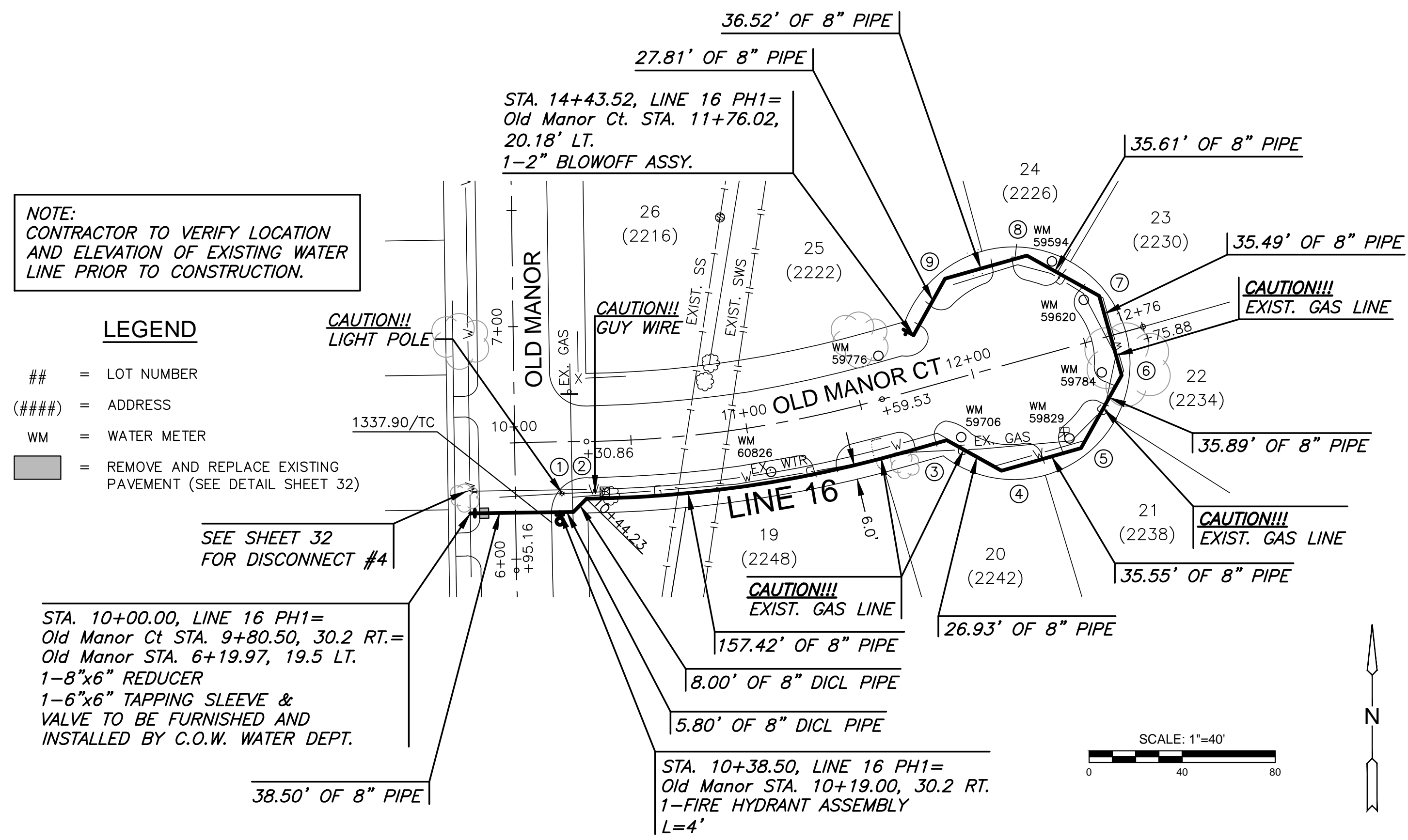


J:\PROJECTS\2017\1601010289_SILVERDALE WATER MAIN REPLACEMENT_160289 CAD\SHS\05 CIVIL\WTRPHASE 1\16289-CP-117.DWG
 PLOTTED: Wednesday, September 13, 2017 @ 11:21 AM

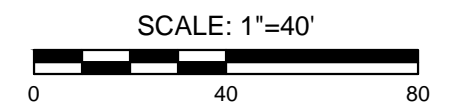


NOTE:
CONTRACTOR TO VERIFY LOCATION
AND ELEVATION OF EXISTING WATER
LINE PRIOR TO CONSTRUCTION.

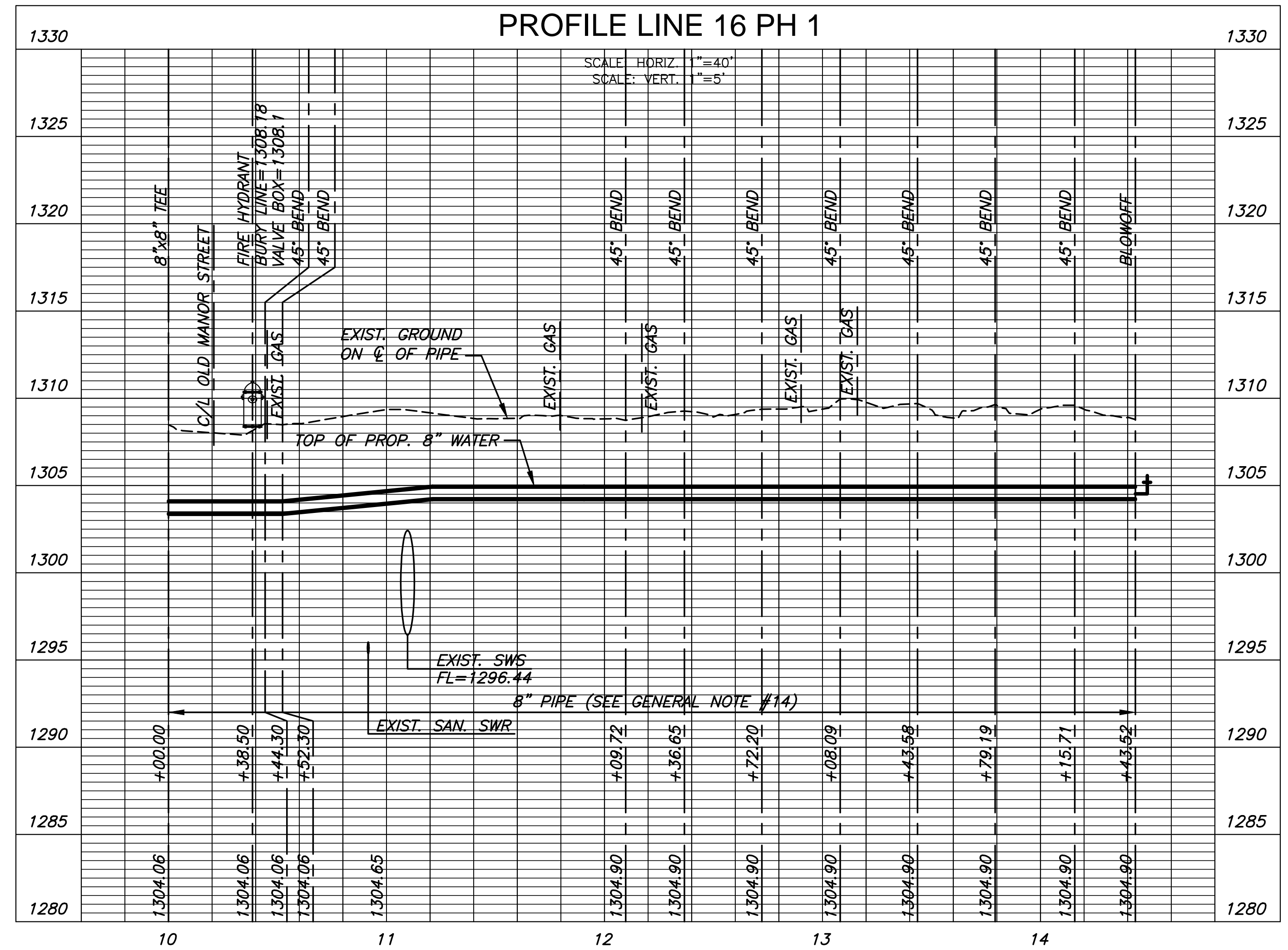
LEGEND
 ## = LOT NUMBER
 (####) = ADDRESS
 WM = WATER METER
 [Hatched Box] = REMOVE AND REPLACE EXISTING
 PAVEMENT (SEE DETAIL SHEET 32)

STA. 10+00.00, LINE 16 PH1=
Old Manor Ct STA. 9+80.50, 30.2 RT.=
Old Manor STA. 6+19.97, 19.5 LT.
1-8"x6" REDUCER
1-6"x6" TAPPING SLEEVE &
VALVE TO BE FURNISHED AND
INSTALLED BY C.O.W. WATER DEPT.

BEND CHART				
NO.	4" BEND	STA.	BL. STA.	OFFSET, RT.
①	45°	10+44.30	10+24.80	30.2' RT.
②	45°	10+52.30	10+30.50	24.6' RT.
③	45°	12+09.72	11+81.60	24.4' RT.
④	45°	12+36.65	12+00.75	43.4' RT.
⑤	45°	12+72.20	12+36.30	43.2' RT.
⑥	45°	13+08.09	12+61.53	17.6' RT.
⑦	45°	13+43.58	12+61.33	17.9' LT.
⑧	45°	13+79.19	12+36.02	42.9' LT.
⑨	45°	14+15.71	11+99.49	42.7' LT.



PLAN LINE 16 PH 1
PROFILE LINE 16 PH 1



WATER MAIN REPLACEMENT PLANS FOR
SILVERDALE ADDITION PART A

©2017
MKEC Engineering
All Rights Reserved
www.mkec.com
 These drawings and their contents,
 including, but not limited to, all concepts,
 designs, & ideas are the exclusive
 property of MKEC Engineering (MKEC),
 and may not be used or reproduced in any
 way without the express consent of MKEC.

WATER LINE 16

PROJECT NO.	448-90720	
DATE	SEPT. 2017	
SCALE	1" = 40'	
DESIGNED	DRAWN	CHECKED
DFL	JWC	GJA

NO.	REVISION	DATE

SHEET NO.