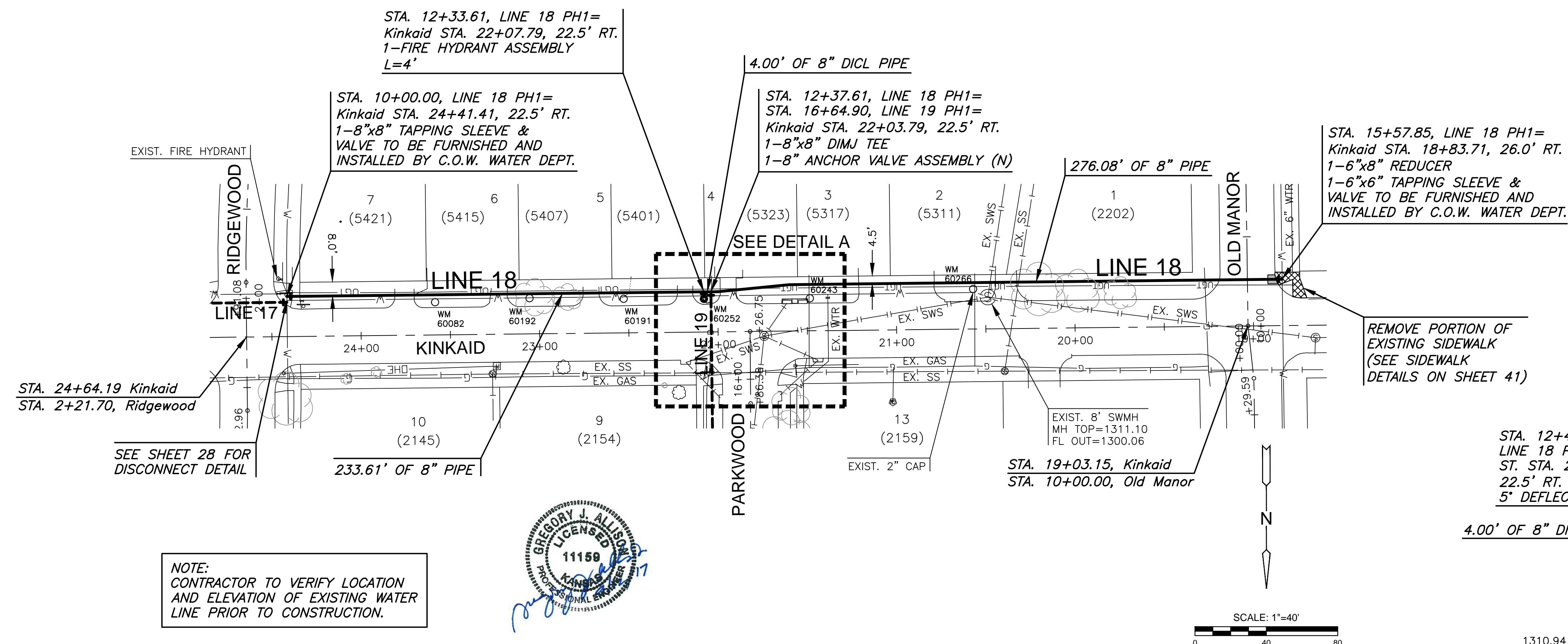
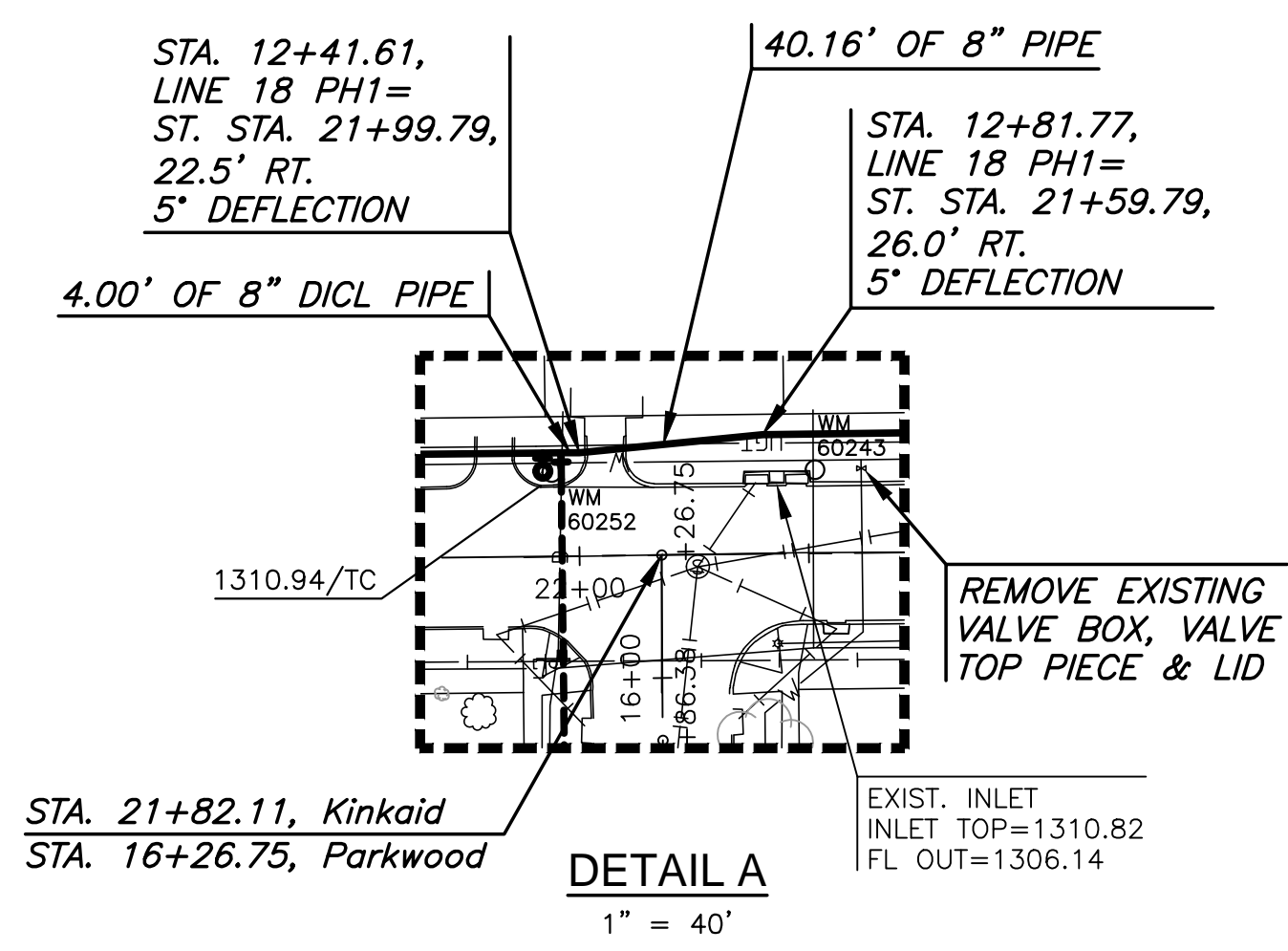


J:\PROJECTS\2017\1601010289_SILVERDALE WATER MAIN REPLACEMENT_160289 CAD\SHS\05 CIVIL\WTRPHASE 1\16289-CP-119.DWG
 PLOTTED: Wednesday, September 13, 2017 @ 11:23AM

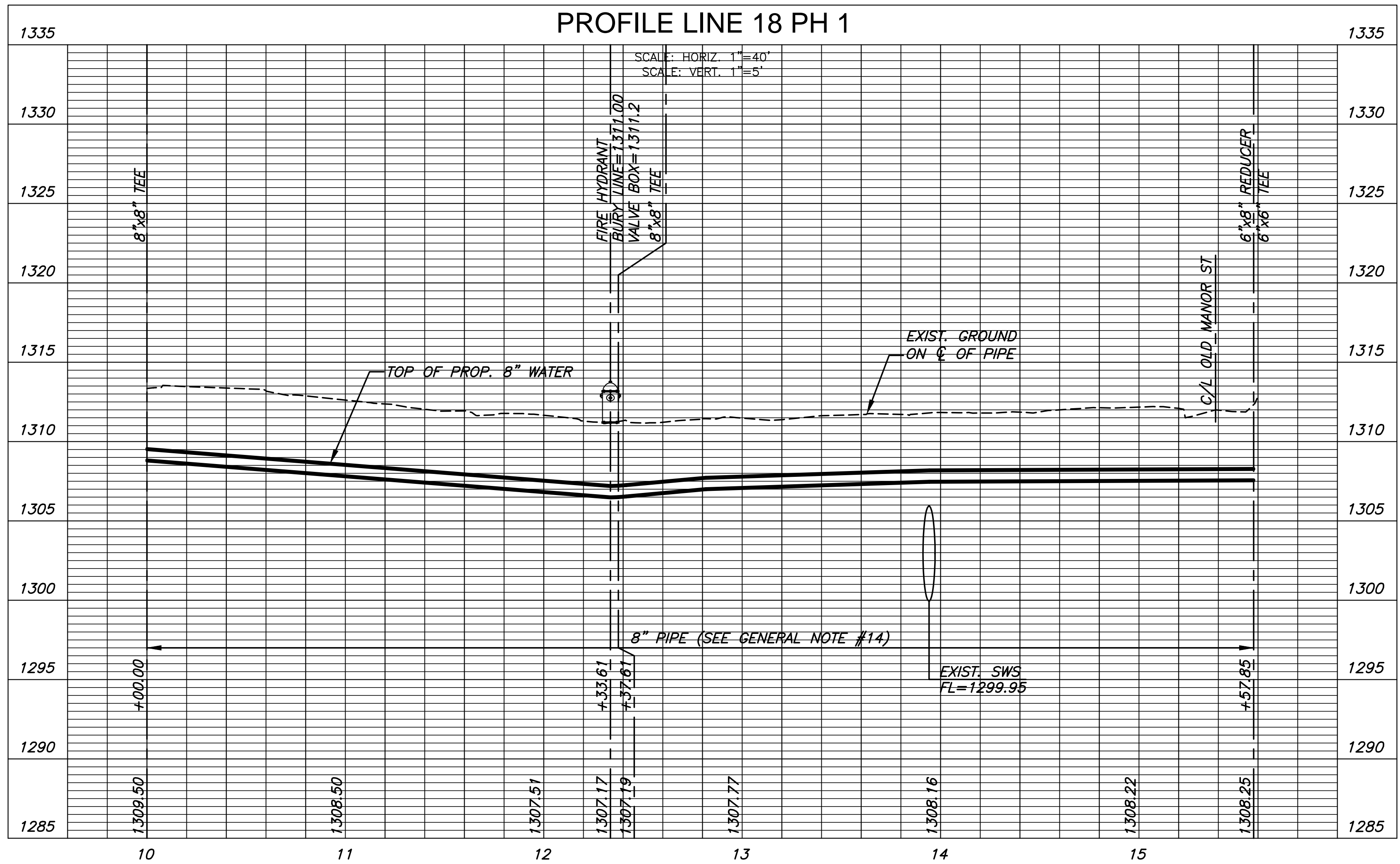


- LEGEND**
- ## = LOT NUMBER
 - (####) = ADDRESS
 - WM = WATER METER
 - [Hatched Box] = REMOVE AND REPLACE EXISTING PAVEMENT (SEE DETAIL SHEET 32)
 - [Cross-hatched Box] = REMOVE AND REPLACE EXISTING SIDEWALK (SEE DETAIL SHEET 41)

NOTE:
 CONTRACTOR TO VERIFY LOCATION
 AND ELEVATION OF EXISTING WATER
 LINE PRIOR TO CONSTRUCTION.



PLAN LINE 18 PH 1
PROFILE LINE 18 PH 1



WATER MAIN REPLACEMENT PLANS FOR
SILVERDALE ADDITION PART A

©2017
 MKEC Engineering
 All Rights Reserved
 www.mkec.com
 These drawings and their contents, including, but not limited to, all concepts, designs, & ideas are the exclusive property of MKEC Engineering (MKEC), and may not be used or reproduced in any way without the express consent of MKEC.

WATER LINE 18

PROJECT NO.	448-90720	
DATE	SEPT. 2017	
SCALE	1" = 40'	
DESIGNED	DRAWN	CHECKED
DFL	JWC	GJA

NO.	REVISION	DATE

SHEET NO.