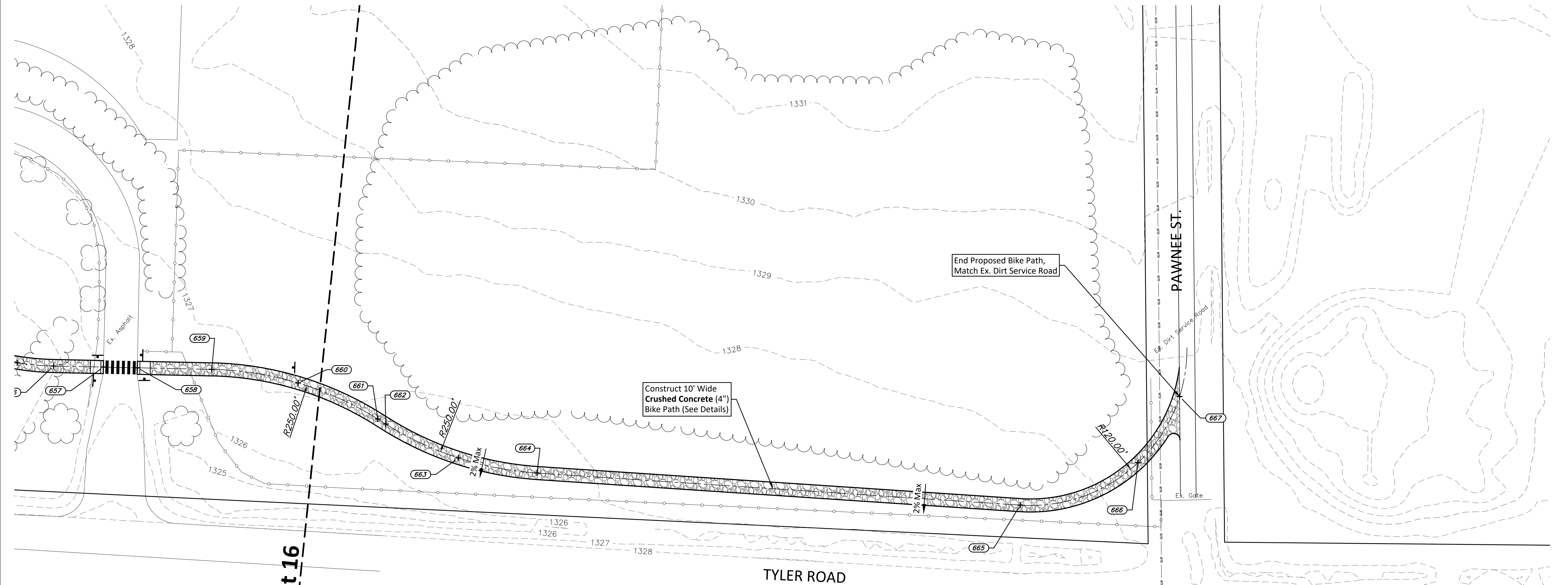


SCALE: 1" = 40'



--- Match Line - Sheet 16

Construct 10' Wide  
Crushed Concrete (4")  
Bike Path (See Details)

End Proposed Bike Path,  
Match Ex. Dirt Service Road

TYLER ROAD

PAWNEE ST.

POINT TABLE

POINT #	RAW DESCRIPTION	NORTHING	EASTING	ELEVATION
661	crush conc	1671725.0107	1617988.2849	1326.81
662	crush conc	1671731.2278	1617991.9994	1326.79
663	crush conc	1671787.5313	1618016.8181	1326.64
664	crush conc	1671848.1914	1618027.1328	1326.48
665	crush conc	1672219.6362	1618043.8798	1328.11
666	crush conc	1672309.2861	1618009.4578	1328.56
667	crush conc	1672340.1403	1617957.9449	1328.83

NOTE: Proposed Path to be Constructed  
Flush w/ Existing Surface Unless Otherwise  
Noted on Plans (Flume Grades). Path Cross  
Slope to Match Existing Runoff Direction  
as Shown on Plans and at 2% Max.

PAVING QUANTITIES PER SHEET

BID	PAVEMENT TYPE	QUANTITIES
BASE	Crushed Concrete Path (4")	7,189.19 sf

**BAUGHMAN COMPANY**  
315 Ellis St. Wichita, KS 67211 316-262-7271  
BaughmanCo.com



CAPITAL IMPROVEMENT PROJECT  
**BIKE PATH  
LAYOUT PLAN**  
PAWNEE PRAIRIE PARK IMPROVEMENTS

PROJECT NUMBER:  
436632  
INTERNAL NUMBER:  
17-11-E865

DESIGN: LP  
DRAWN: LP  
DATE: JUL, 2018

SHEET  
OF  
**17**  
**23**