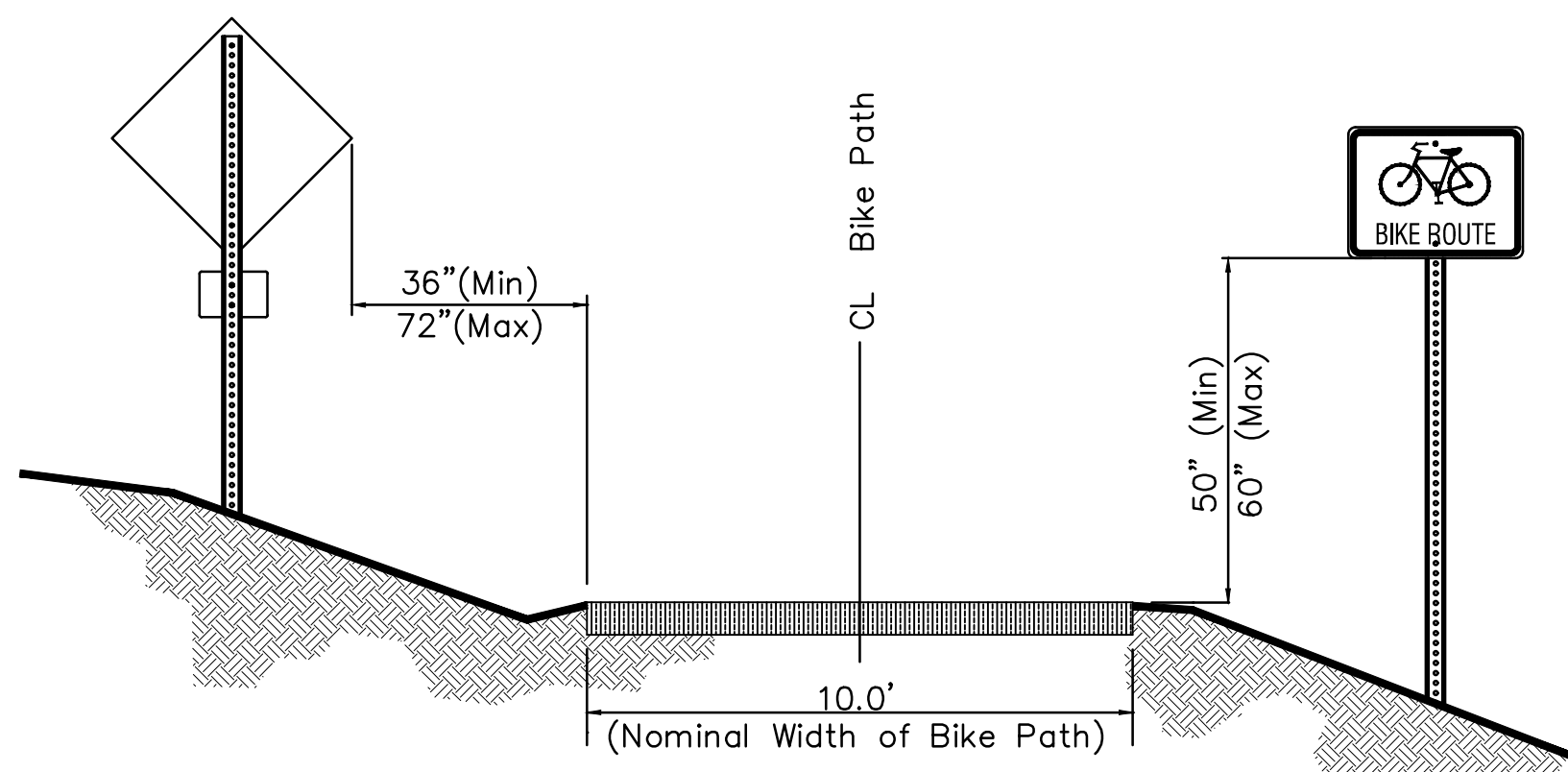
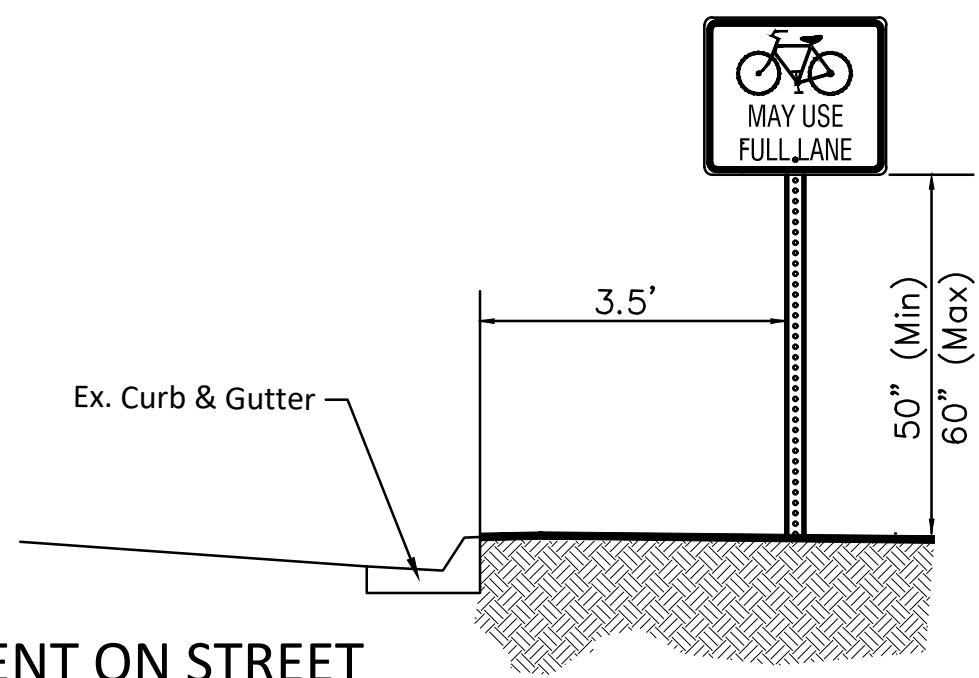


TYPICAL SIGN MOUNTING



SIGN PLACEMENT ON PATH

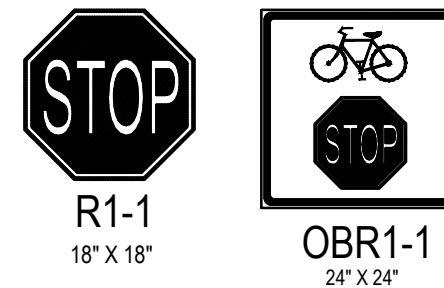


SIGN PLACEMENT ON STREET

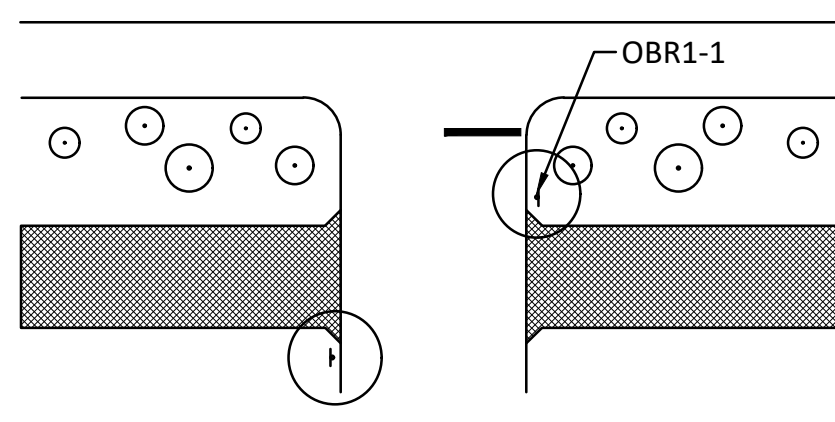
MULTI-USE PATHS

Multi-Use paths should be signed with appropriate regulatory, warning and destination signs.

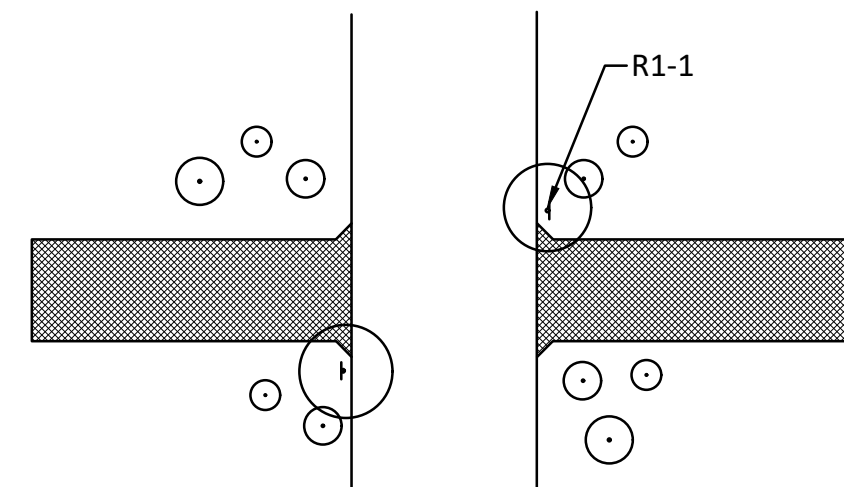
Regulatory Signs
Regulatory signs inform users of traffic laws or regulations. They are erected at the point where regulations apply. Common regulatory signs are:



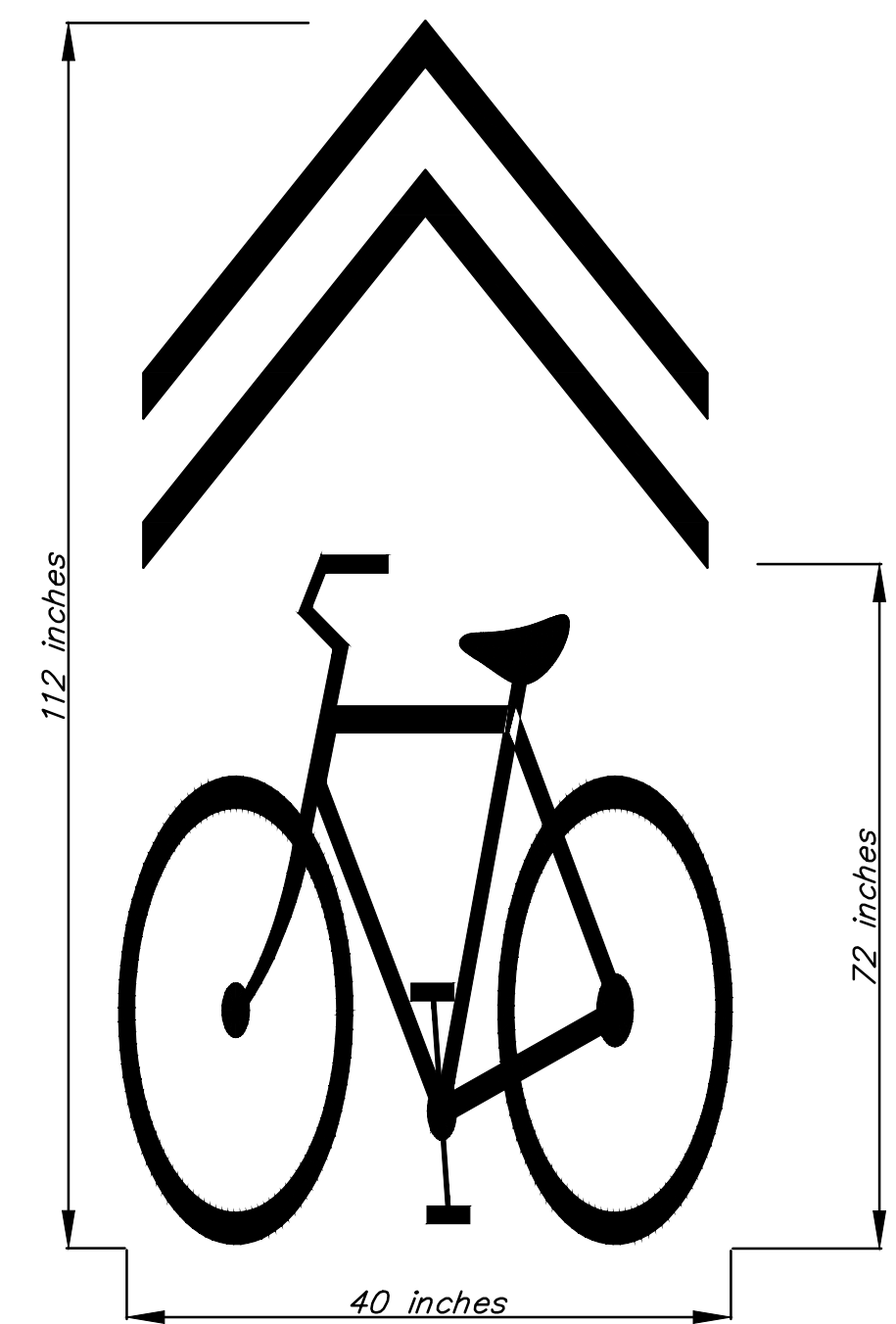
Note: Sign R1-1 is a reduced version of a standard motor vehicle sign. It should be used where it will be visible only to bicyclists, for example, where a path crosses another path or where a path intersects a roadway at right angles. Sign OBR1-1 should be used where the sign will be visible to motor vehicle traffic, for example, where a path is parallel and close to a roadway.



Appropriate use of sign OBR1-1



Appropriate use of sign R1-1



SHARED BIKE LANE MARKINGS (SHARROW)

SIGNING NOTES

NOTE: References below to "standard specifications" denote "standard specifications for state road and bridge construction, edition 1990" by the Kansas Department of Transportation.

- Post Anchors. Posts shall be anchored with a yielding base post support as detailed.
- Posts for traffic control signs. Posts shall conform to the requirements of subsection 1620 of the standard specifications except that all posts shall weigh 3 lbs./foot minimum.
- Sign blanks for traffic control signs. Sign blanks shall be fabricated from 0.080" aluminum alloy 6063-T6 conforming to the requirements of subsection 1626 of the standard specifications.
- Fasteners. All steel fasteners for traffic control signs shall be galvanized and shall conform to the requirements of subsection 1614 of the standard specifications.
- Reflective sheeting. Reflective sheeting shall be type II - High performance class HA in accordance with subsection 2201 of the standard specifications.
- Details. Regulatory and warning signs shall conform to the details in "Standard Highway Signs", FHWA 1979.
- New traffic control and street name signs. New traffic control and street name signs shall be measured and paid for at the lump sum price for signing. The payment as set forth above shall be considered full compensation for all excavation, backfilling, posts, anchors, fasteners, materials, labor, tools, and incidentals necessary to complete this work.
- Details - SNS. The reflective sheeting for the 7" standard size SNS is to be the highway green reverse screened background with silver-white #2 copy with 4" uppercase and 3" lower case primary copy and suffix copy. Both series "C". Where suffix letters are used on numbered streets such as RD, TH, etc., they shall be 1.5" lower case series "C" letters. Faces to trim to a 6.3".

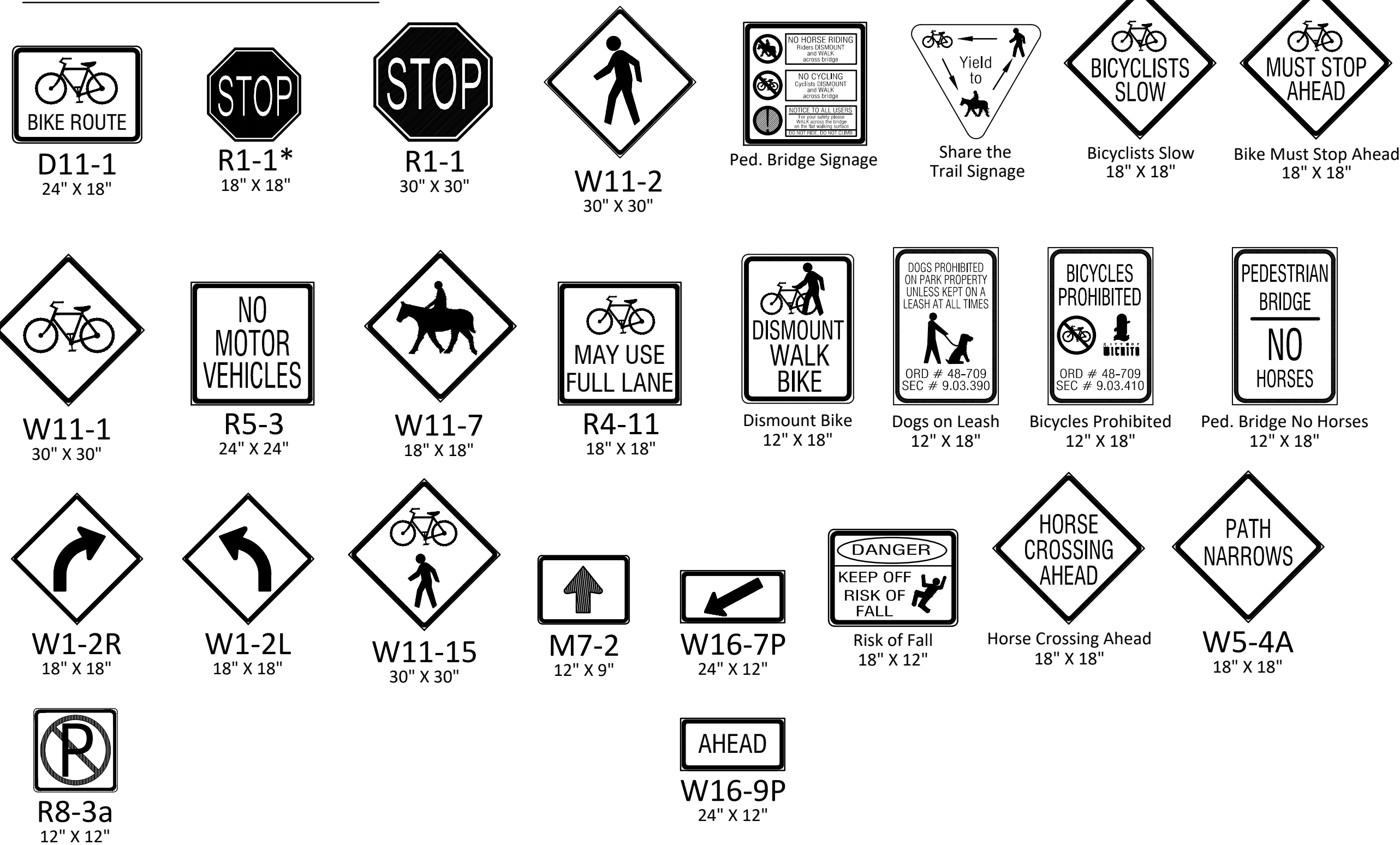
The reflective sheeting for the 9" metro size SNS is to be the highway green reverse screened background with silver-white #2 copy with 5" upper case and 3.7" lower case primary copy and suffix copy, both series "C". Where suffix letters are used on numbered streets, such as RD, TH, etc., they shall be 3" lower case series "C". The cardinal direction centered directly below the block number shall be an upper case, 3" series "C" letter. Faces to trim to an 8.5" width.

Shop drawings of layout for SNS shall be submitted to the Traffic Engineering Division of the City of Newton for approval prior to fabrication. The finished signs as supplied shall be of good appearance, free from ragged edges, cracks, scales or blisters, and shall be clean cut. Signs shall be packed in such a manner as to prevent damage or defacement during shipment or storage.

- New traffic control and street name signs. New traffic control and street name signs shall be measured and paid for at the lump sum price for signing. The payment as set forth above shall be considered full compensation for all excavation, backfilling, posts, anchors, fasteners, materials, labor, tools, and incidentals necessary to complete this work.

- Final sign placement and locations to be coordinated with City of Newton Traffic Engineering Department.

TYPICAL SIGNAGE



SIGN ASSEMBLY QUANTITIES

SHEETS	SIGN	SIZE	BID				
			BASE	ALT 1A & 1B	ALT 2A & 2B	ALT 3	ALT 4
6, 7, 8, 9	D11-1	24"x18"	3	1	3	-	3
16	R1-1	18"x18"	2	-	-	-	-
8, 9	R1-1	30"x30"	-	-	-	-	6
11, 12	W11-2	30"x30"	4	-	-	-	-
-	W11-1	30"x30"	-	-	-	-	-
6, 7, 9	R5-3	24"x24"	1	1	2	-	-
7, 13, 15	W11-7	18"x18"	6	-	1	-	-
8, 9	R4-11	18"x18"	-	-	-	-	4
-	W1-2R	18"x18"	-	-	-	-	-
12	W1-2L	18"x18"	-	-	-	-	-
16	W11-15	30"x30"	2	-	-	-	-
8, 9	M7-2	12"x9"	-	-	-	-	4
12, 16	W16-7P	24"x12"	4	-	-	-	-
7	Ped. Bridge Signage	18"x18"	-	-	2	-	-
6, 9, 11, 16, 22	Share the Trail	-	3	1	1	1	-
7, 11, 12, 16	Bicyclists Slow	18"x18"	6	1	2	-	-
16	Bike Must Stop Ahead	18"x18"	2	-	-	-	-
12, 13	Dismount Bike	12"x18"	2	-	-	-	-
6, 9, 11, 16	Dogs on Leash	12"x18"	2	1	1	-	-
7, 9, 12, 13	Bicycles Prohibited	12"x18"	3	2	1	-	-
-	Ped. Bridge No Horses	12"x18"	-	-	-	-	-
12	Risk of Fall	18"x12"	1	-	-	-	-
-	Horse Crossing Ahead	18"x18"	-	-	-	-	-
7	W5-4A	18"x18"	-	-	-	-	-
11, 12	W16-9P	24"x12"	2	-	-	-	-
6, 8, 9	R8-3a	12"x12"	-	-	-	-	7

BAUGHMAN COMPANY
315 Ellis St. Wichita, KS 67211
316-262-7271
BaughmanCo.com

CAPITAL IMPROVEMENT PROJECT
BIKE PATH
SIGNING DETAILS
PAWNEE PRAIRIE PARK IMPROVEMENTS

PROJECT NUMBER: 426632
INTERNAL NUMBER: 17-11-E865
DESIGN: LP
DRAWN: LP
DATE: JUL, 2018
SHEET
OF 5
23