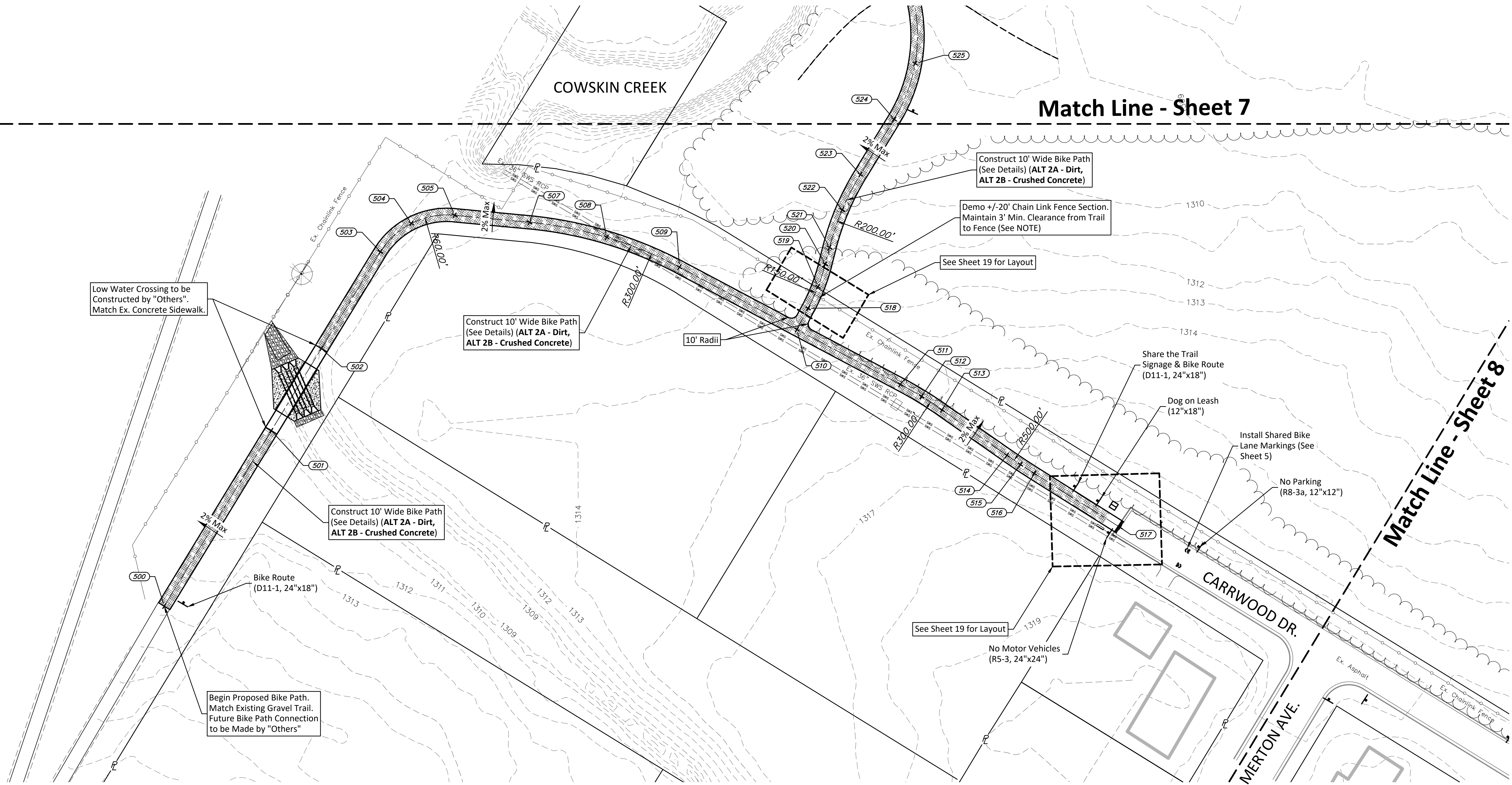
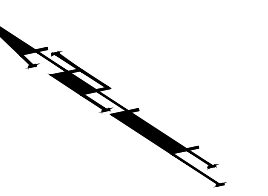


SCALE: 1" = 40'



Low Water Crossing to be Constructed by "Others". Match Ex. Concrete Sidewalk.

Construct 10' Wide Bike Path (See Details) (ALT 2A - Dirt, ALT 2B - Crushed Concrete)

Construct 10' Wide Bike Path (See Details) (ALT 2A - Dirt, ALT 2B - Crushed Concrete)

Begin Proposed Bike Path. Match Existing Gravel Trail. Future Bike Path Connection to be Made by "Others"

Construct 10' Wide Bike Path (See Details) (ALT 2A - Dirt, ALT 2B - Crushed Concrete)

Demo +/-20' Chain Link Fence Section. Maintain 3' Min. Clearance from Trail to Fence (See NOTE)

See Sheet 19 for Layout

Share the Trail Signage & Bike Route (D11-1, 24"x18")

Dog on Leash (12"x18")

Install Shared Bike Lane Markings (See Sheet 5)

No Parking (R8-3a, 12"x12")

See Sheet 19 for Layout

No Motor Vehicles (R5-3, 24"x24")

**POINT TABLE**

POINT #	RAW DESCRIPTION	NORTHING	EASTING	ELEVATION
500	path	1677444.5053	1613611.3273	1312.12
501	match	1677449.3347	1613765.7491	1310.50
502	match	1677451.5925	1613837.9435	1310.90
503	path	1677454.2566	1613923.1294	1310.14
504	path	1677446.3663	1613953.7329	1310.52
505	path	1677422.5086	1613976.5866	1311.02
507	path	1677372.5029	1614002.9387	1311.77
508	path	1677317.8050	1614025.1939	1312.00
509	path	1677259.8073	1614036.3035	1312.24
510	path	1677160.3343	1614045.3485	1313.44
511	path	1677072.6614	1614053.3205	1314.43
512	path	1677054.3324	1614054.4229	1314.56

POINT #	RAW DESCRIPTION	NORTHING	EASTING	ELEVATION
513	path	1677035.9703	1614054.4018	1314.68
514	path	1676976.4806	1614052.5122	1315.08
515	path	1676964.1815	1614052.2729	1315.17
516	path	1676951.8803	1614052.3363	1315.25
517	path	1676875.6632	1614053.6667	1315.76
518	path	1677161.9713	1614063.3518	1313.04
519	path	1677164.6329	1614080.9550	1312.56
520	path	1677169.3613	1614098.1189	1312.00
521	path	1677173.5531	1614110.4295	1311.51
522	path	1677181.0313	1614139.2810	1310.94
523	path	1677184.1389	1614168.9234	1310.23

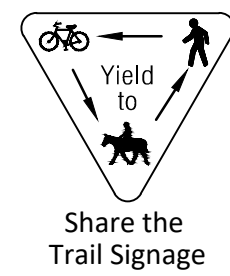
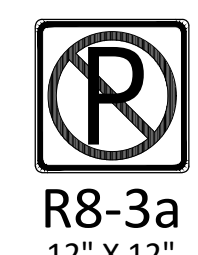
NOTE: Crushed Concrete (4") & Concrete Sidewalk Transitions shall have Thickened Edge as Shown in Details (See Sheet 4)

NOTE: Contractor to Supply Chainlink End Posts and All Other Materials Necessary for Fence Opening. Work to be Paid for by Bid Item "Fence Removal"

NOTE: Proposed Path to be Constructed Flush w/ Existing Surface Unless Otherwise Noted on Plans (Flume Grades). Path Cross Slope to Match Existing Runoff Direction as Shown on Plans and at 2% Max.

**PAVING QUANTITIES PER SHEET**

BID	PAVEMENT TYPE	QUANTITIES
ALT 2A	Dirt Path (95% Compaction)	10,306.88 sf
ALT 2B	Crushed Concrete Path (4")	10,306.88 sf



**BAUGHMAN COMPANY**  
315 Ellis St. Wichita, KS 67211 316-262-7271  
BaughmanCo.com

CAPITAL IMPROVEMENT PROJECT  
**BIKE PATH LAYOUT PLAN**  
PAWNEE PRAIRIE PARK IMPROVEMENTS

PROJECT NUMBER: 436632  
INTERNAL NUMBER: 17-11-E865  
DESIGN: LP  
DRAWN: LP  
DATE: JUL, 2018  
SHEET  
OF  
**6**  
**23**