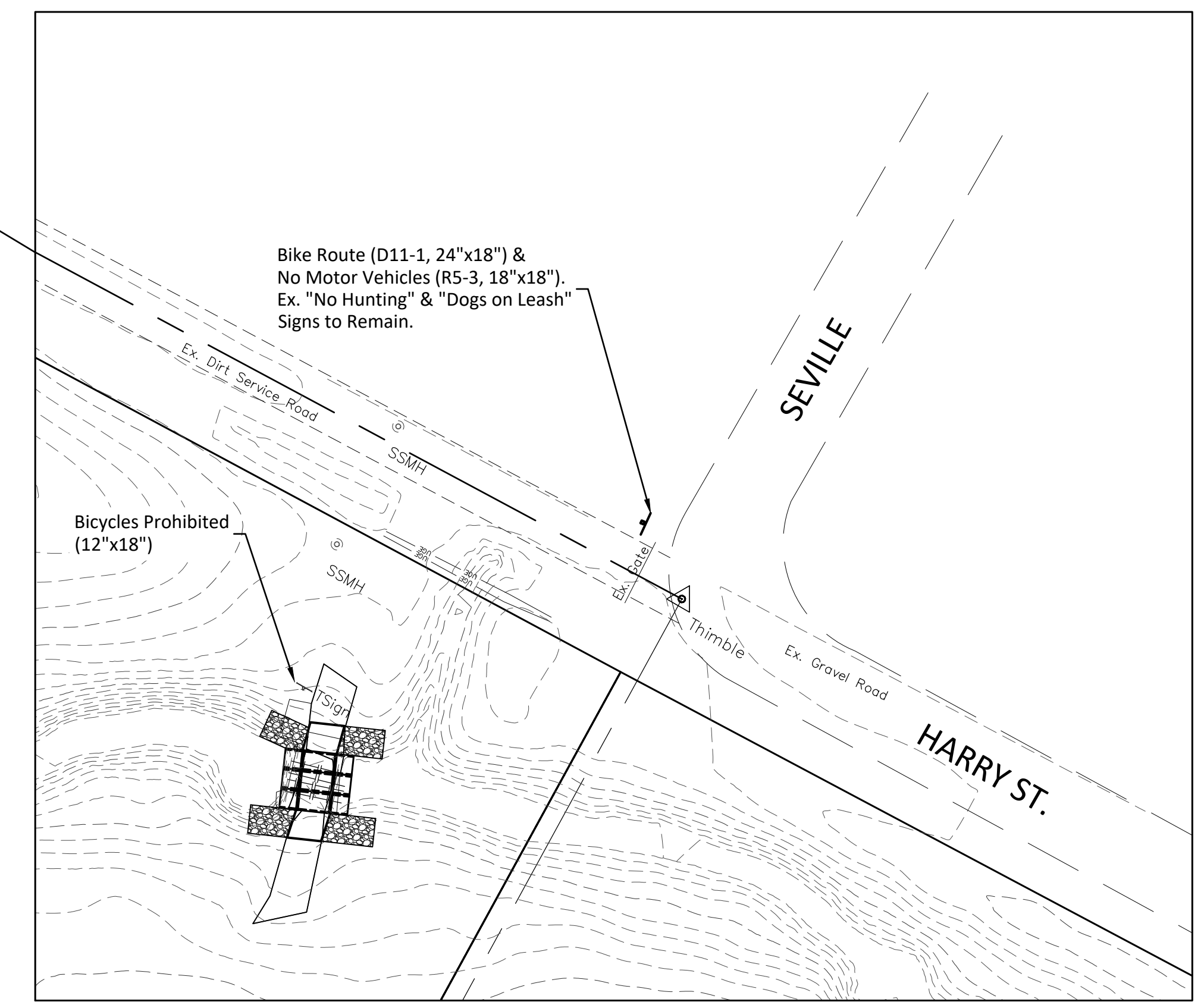
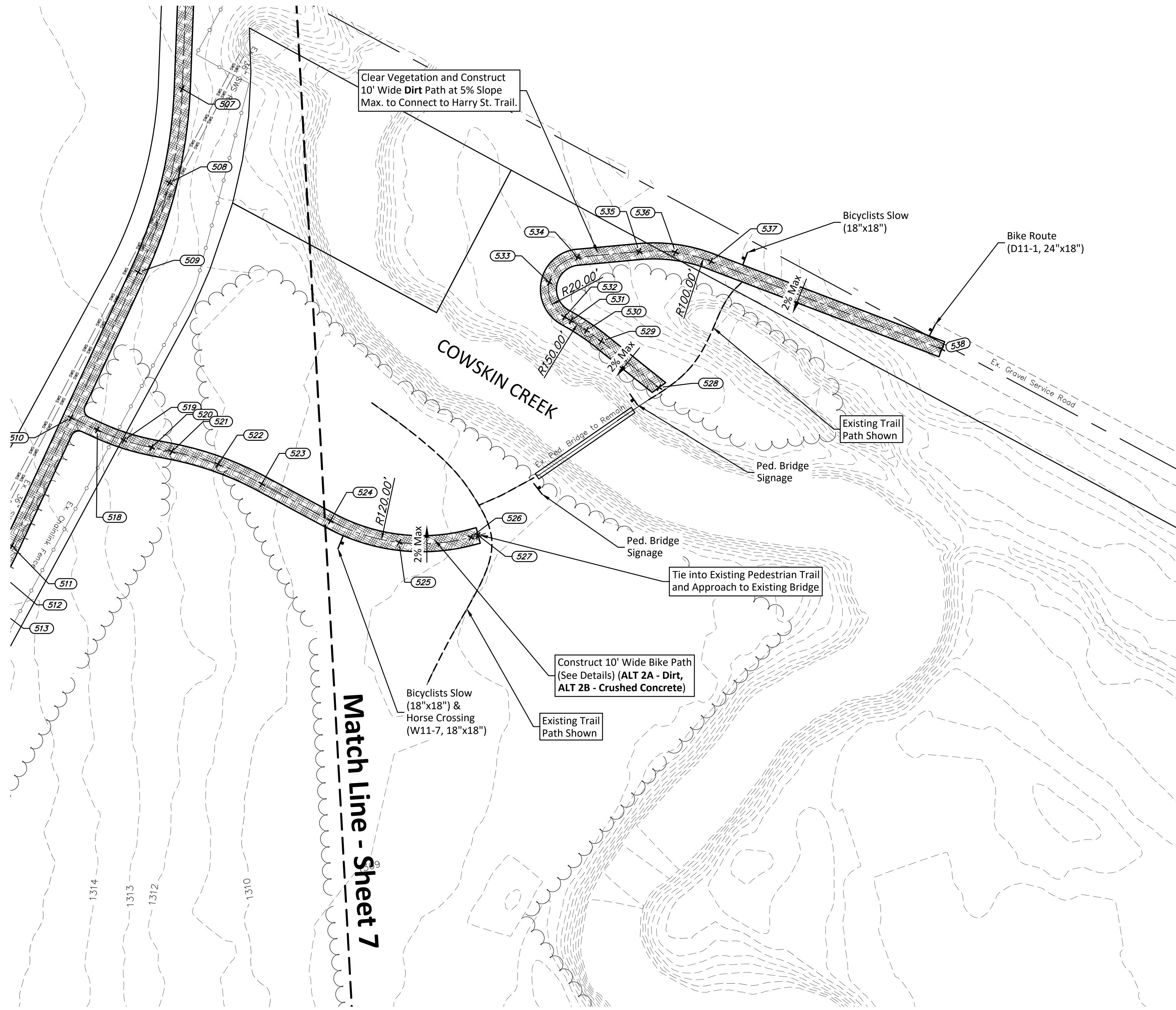
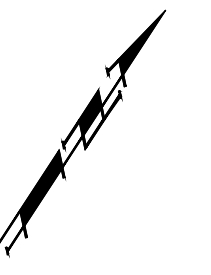
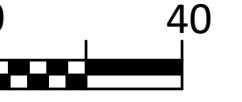


SCALE: 1" = 40'



Match Line - Sheet 7

**POINT TABLE**

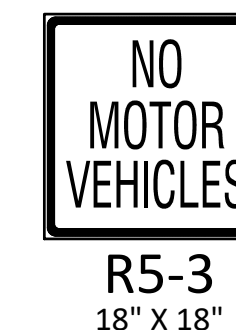
POINT #	RAW DESCRIPTION	NORTHING	EASTING	ELEVATION
524	path	1677185.5914	1614217.5366	1309.65
525	path	1677195.2894	1614261.3369	1309.16
526	path	1677220.3955	1614298.5149	1308.59
527	path	1677223.7202	1614301.8624	1308.42
528	path	1677359.8739	1614353.3683	
529	path	1677366.8168	1614307.7230	
530	path	1677368.0997	1614296.4205	
531	path	1677368.5224	1614285.0534	

POINT #	RAW DESCRIPTION	NORTHING	EASTING	ELEVATION
532	path	1677368.5189	1614280.3847	
533	path	1677382.4537	1614261.3265	
534	path	1677404.8490	1614268.8380	
535	path	1677427.0650	1614300.2574	
536	path	1677437.9869	1614320.1714	
537	path	1677444.1334	1614342.0363	
538	path	1677468.7140	1614494.1290	

NOTE: Proposed Path to be Constructed Flush w/ Existing Surface Unless Otherwise Noted on Plans (Flume Grades). Path Cross Slope to Match Existing Runoff Direction as Shown on Plans and at 2% Max.

**PAVING QUANTITIES PER SHEET**

BID	PAVEMENT TYPE	QUANTITIES
ALT 2A	Dirt Path (95% Compaction)	4,611.96 sf
ALT 2B	Dirt Path (95% Compaction)	3,621.73 sf
	Crushed Concrete Path (4")	990.23 sf



**BAUGHMAN COMPANY**  
315 Ellis St. Wichita, KS 67211 316-262-7271  
BaughmanCo.com

CAPITAL IMPROVEMENT PROJECT  
**BIKE PATH LAYOUT PLAN**  
PAWNEE PRAIRIE PARK IMPROVEMENTS

PROJECT NUMBER: 436632  
INTERNAL NUMBER: 17-11-E865  
DESIGN: LP  
DRAWN: LP  
DATE: JUL, 2018  
SHEET  
OF  
**7**  
**23**