

STATE	PROJECT NO.	YEAR	SHEET NO.	TOTAL SHEETS
KANSAS	472-85285	2017	1	90

# CITY OF WICHITA, KANSAS PLAN OF PROPOSED 1ST STREET IMPROVEMENTS

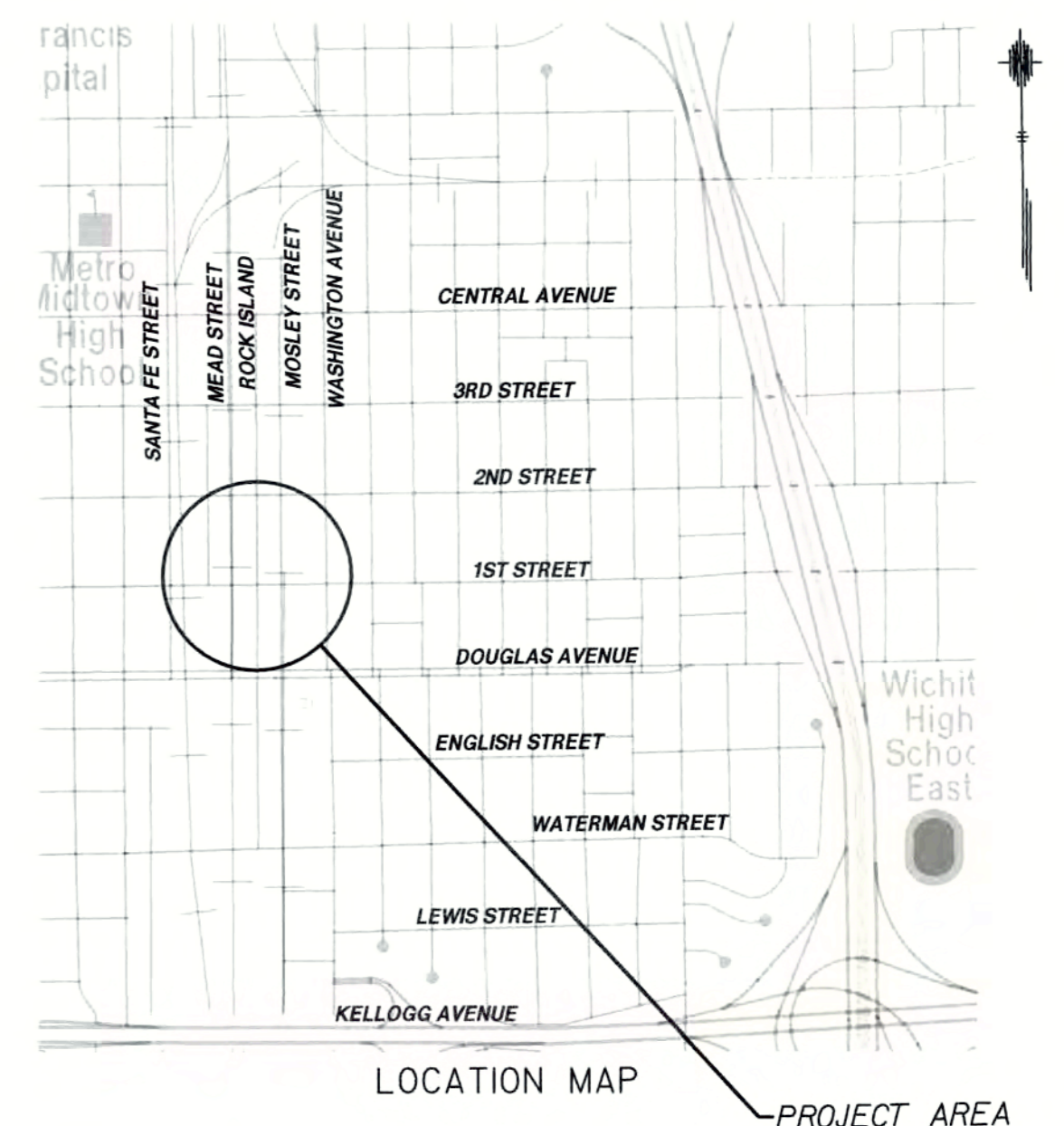
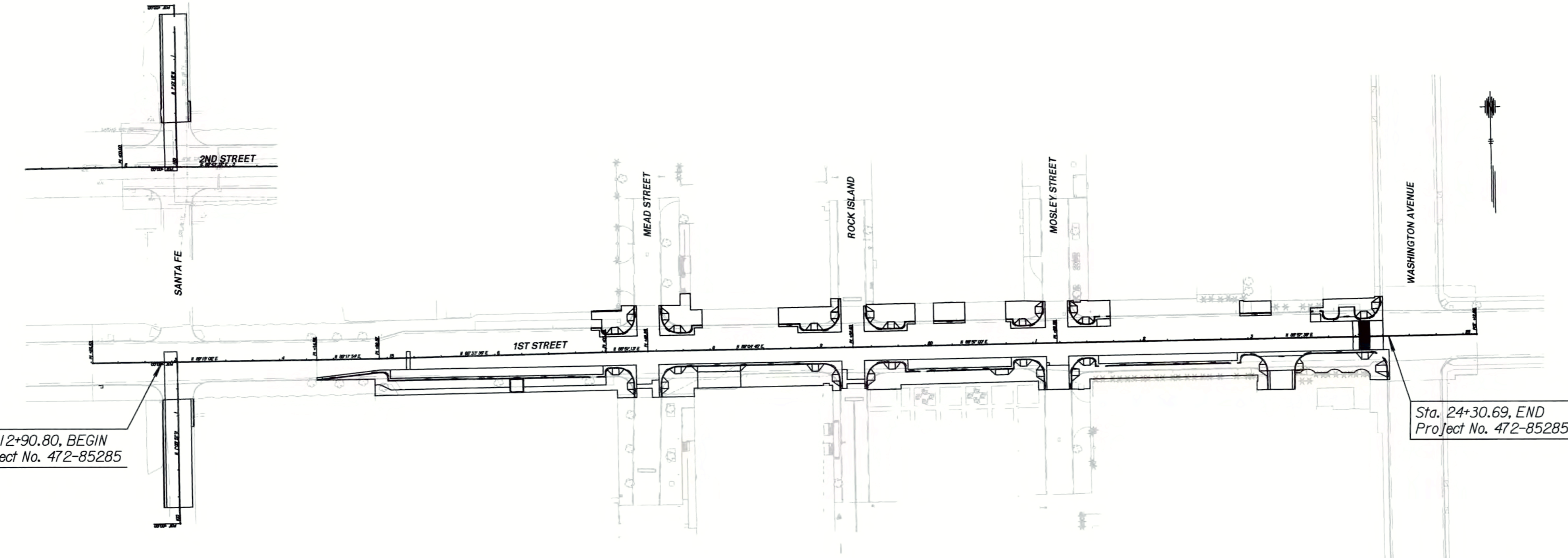
**C.O.W. PAVING PROJ. NO. 472-85285**  
**OCA NO. 707101**  
**C.O.W. WATER LINE PROJ. NO. 448-90772**  
**OCA NO. 636359**

GRADING  
CONCRETE PAVEMENT  
ASPHALT OVERLAY  
LANDSCAPING  
PAVEMENT MARKING  
SIGNING  
LIGHTING

**INDEX OF SHEETS**

- 1 Title Sheet
- 2 General Notes
- 3 Coordinate Control Data
- 4 Typical Sections
- 5 - 8 Proposed Plan Sheets
- 9 - 15 Streetscape Plan Sheets
- 16 - 17 Bird Deterrent & Edge Dam
- 18 - 34 Sidewalk Layout Sheets
- 35 - 41 Storm Sewer Details
- 42 Driveway Details
- 43 Wheelchair Ramp Details
- 44 Curb and Gutter Details
- 45 Concrete Pavement Details
- 46 - 49 Erosion Control Details
- 50 Summary of Quantities
- 51 - 60 Construction Phasing Plans
- 61 - 65 Traffic Control Standards
- 66 - 68 Pavement Marking & Signing Plans
- 69 - 70 Pavement Marking & Signing Details
- 71 - 75 Electrical & Lighting Plans
- 76 - 77 Traffic Signal Plan Sheets
- 78 - 80 Traffic Signal Details
- 81 - 84 Water System Details
- 85 Water System General Notes & Summary of Quantities
- 86 Water System Coordinate Control Data
- 87 - 90 Waterline Plan & Profile Sheets

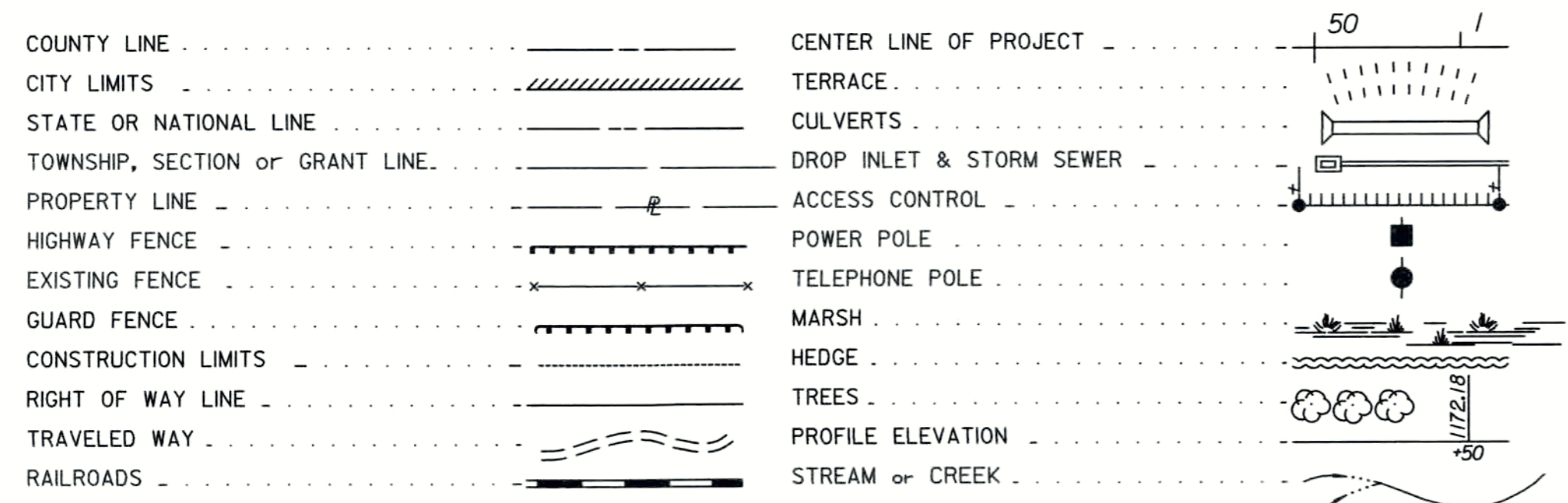
DATE		BY		SURVEY		CADD TECHNICIAN		DESIGNERS	



**DESIGN DESIGNATION**

AADT (2015)	=	7,300
AADT (2045)	=	13,250
V	=	30 MPH
C of A	=	NONE
LATERAL OFFSET	=	6.0 FT

**CONVENTIONAL SIGNS**



GROSS LENGTH OF PROJECT	1139.89 FT.	
EXCEPTIONS	0.00 FT.	
NET LENGTH OF PROJECT	1139.89 FT.	0.22 MILES
NET LENGTH OF BRIDGES	0.00 FT.	0.00 MILES
NET LENGTH OF ROAD	1139.89 FT.	0.22 MILES

<b>Contractor: Pearson Construction</b>	
Superintendent: Steve Trotter	
Inspector: Kevin Yale	
Engineer: Greg Baalman	
<b>Description</b>	<b>Quantity</b>
Pipe, WL 8" Restrained (PVC)	886 LF
Pipe, WL 8" Restrained (DICT)	130 LF
Pipe, HDPE 20"	43 LF
Valve Assembly, Anchored 8"	9 Ea
Fire Hydrant Assembly (Clow)	4 Ea
Service Line - Long 1"	6 Ea
Service Line - Short 1"	2 Ea
90° Bend	10 Ea
45° Bend	16 Ea
11.25° Bend	2 Ea
Tee 8"X8"	3 Ea
Cross 8"X8"	2 Ea

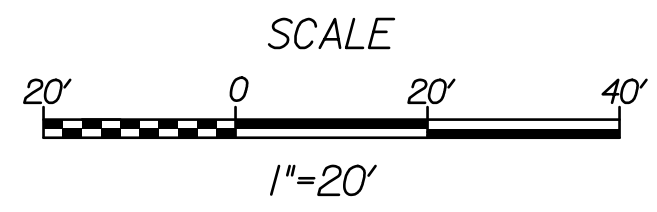
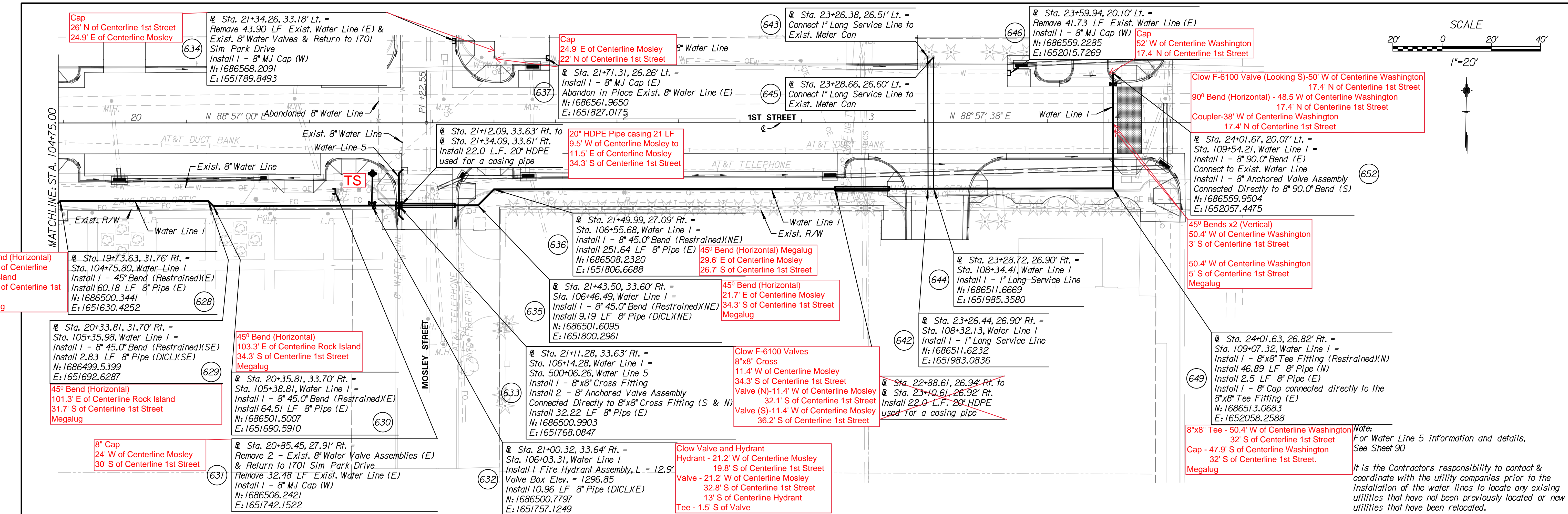
TRAFFIC SHALL BE CARRIED THROUGH CONSTRUCTION ON EXISTING ALIGNMENTS  
EXISTING ALIGNMENTS ARE TO BE SIGNED AND MAINTAINED BY THE CONTRACTOR

	<p>TranSystems Tyler A. Ummel P.E. KS License No. 24843</p> <p>Sheets: 1-8, 18-70, 76-90</p>
	<p>LK Architecture, Inc. Landscape Architect of Record Jeffrey A. Best, P.L.A. KS License No. 679</p> <p>Sheets: 9-17</p>
	<p>LK Architecture, Inc. Engineer of Record Steve Berry, P.E. KS License No. 12178</p> <p>Sheets: 71-75</p>

LK Architecture, Inc.  
345 Riverview  
Suite 200  
Wichita, KS 67208  
Main: 316-268-0230

245 N. Waco  
Suite 222  
Wichita, KS 67202  
Main: 316-303-3000  
Fax: 316-303-0156





**Tran Systems**  
 245 NORTH WACO  
 SUITE 222  
 WICHITA, KANSAS 67202  
 PHONE: 316-303-3000  
 FAX: 316-303-0166



**CONSULTANTS:**  
**LK ARCHITECTURE, INC.**  
 345 RIVERVIEW  
 SUITE 200  
 WICHITA, KANSAS 67208  
 PHONE: 316-268-0230

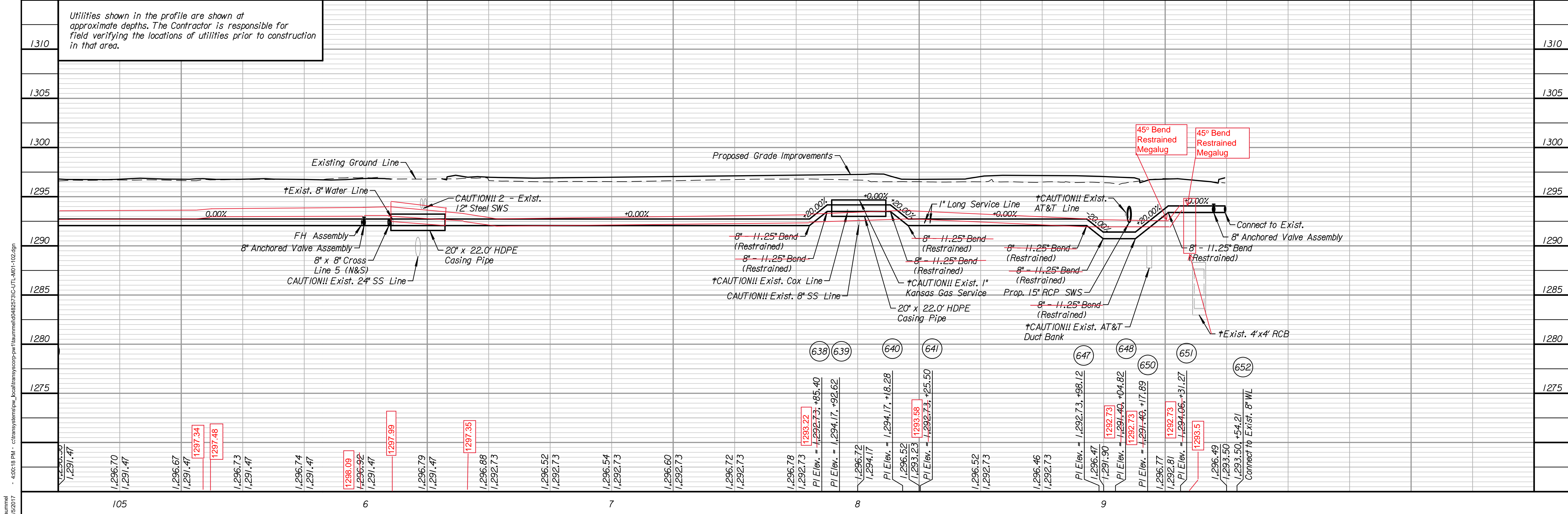
**1ST STREET IMPROVEMENTS  
 SANTA FE TO WASHINGTON IN OLD TOWN**

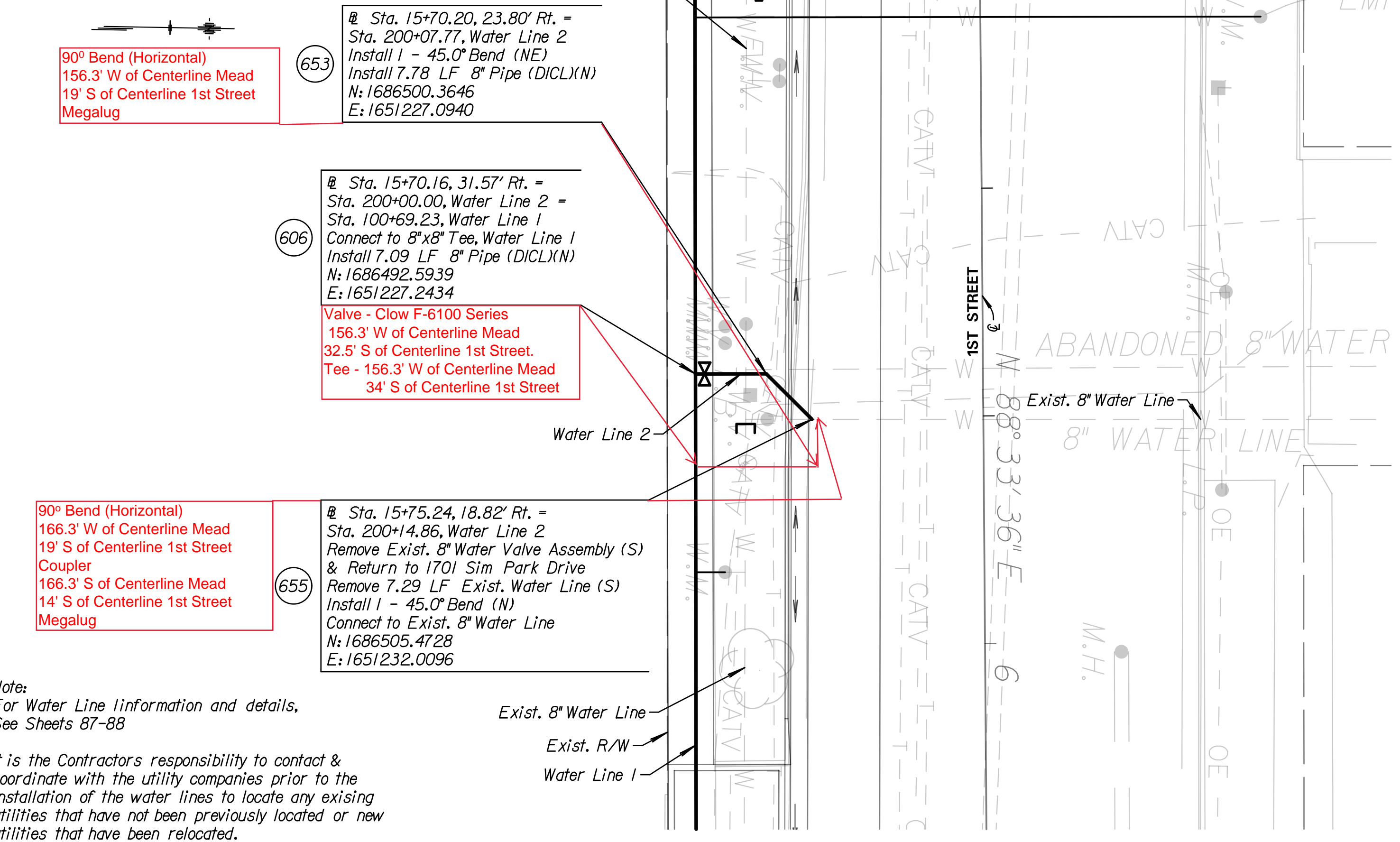
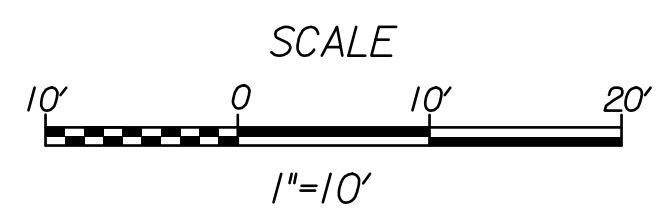
REVISIONS:	MARK	DATE	DESCRIPTION

PROJ NO: 472-85285  
 SCALE: 1"=20'  
 DATE: 7/5/2017  
 DESIGNED BY: TAU  
 DRAWN BY: TAU  
 CHECKED BY: MDB

**SHEET TITLE:**  
**1ST STREET WATERLINE IMPROVEMENTS WATER LINE 1**

SHEET NO. **88**  
 SHEET 88 OF 90

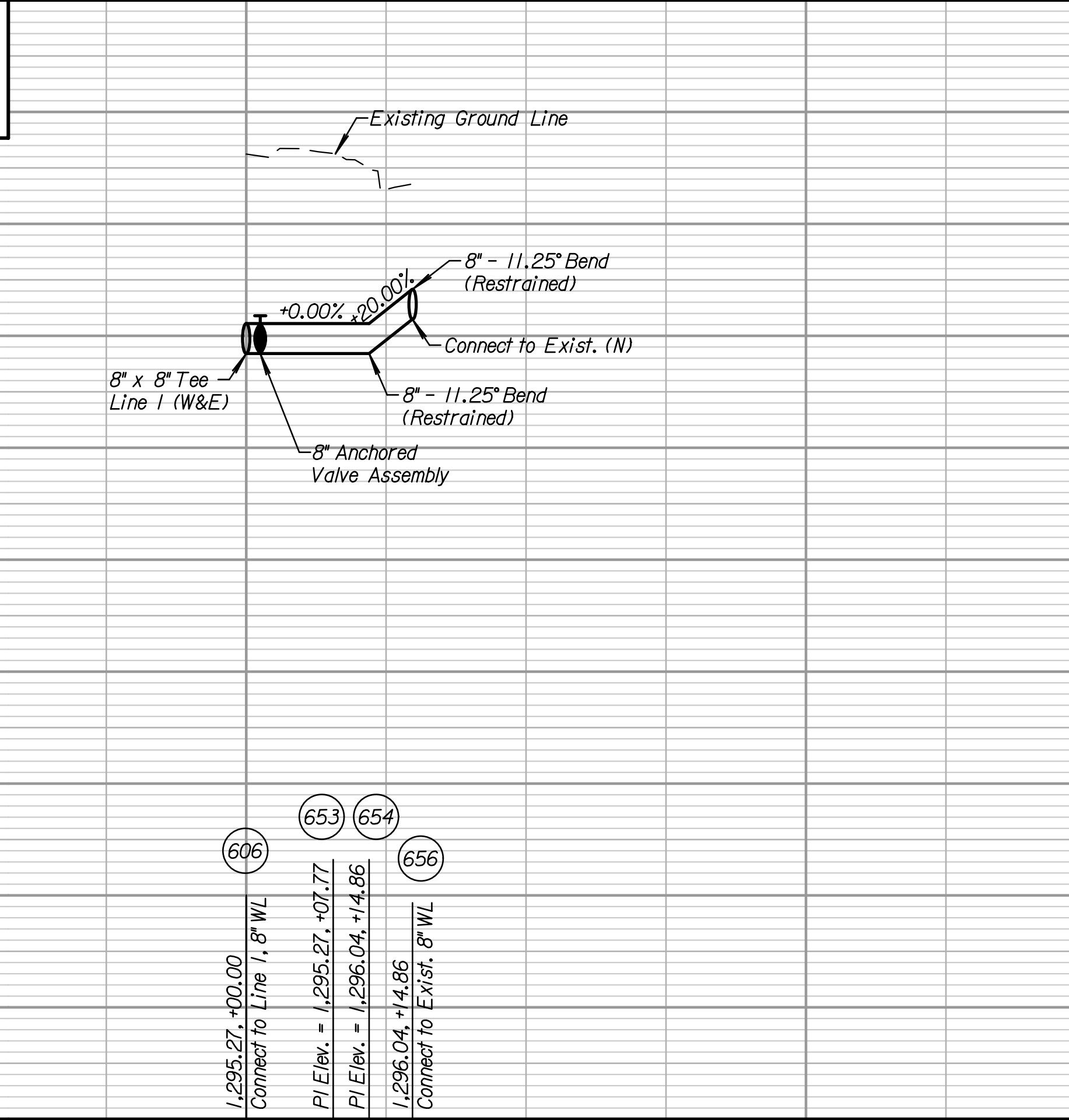




Note:  
For Water Line Information and details,  
See Sheets 87-88

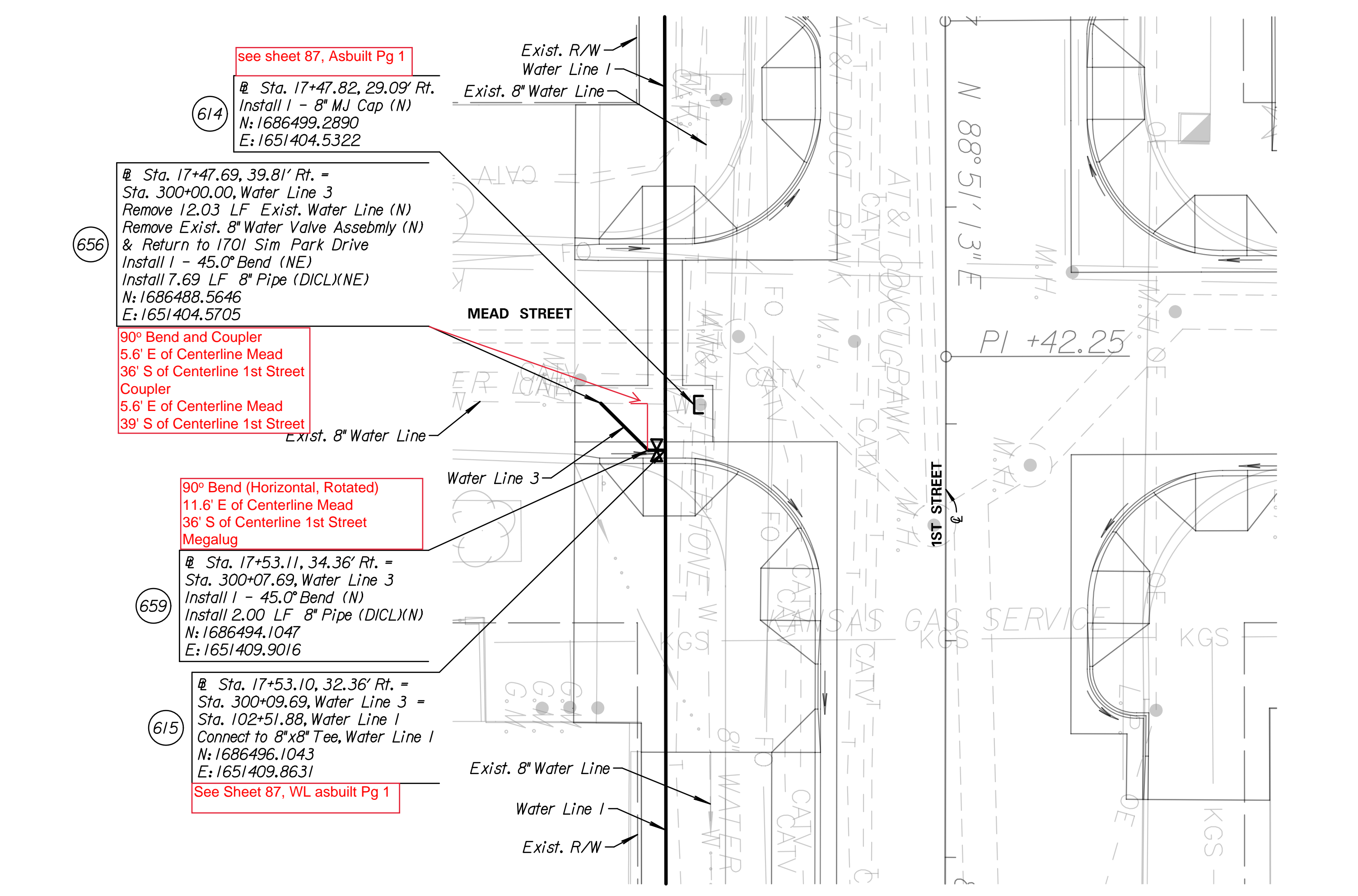
It is the Contractor's responsibility to contact &  
coordinate with the utility companies prior to the  
installation of the water lines to locate any existing  
utilities that have not been previously located or new  
utilities that have been relocated.

1300	Utilities shown in the profile are shown at approximate depths. The Contractor is responsible for field verifying the locations of utilities prior to construction in that area.
1295	
1290	
1285	



1,295.27, +00.00	Connect to Line 1, 8" WL
PI Elev. = 1,295.27, +07.77	
PI Elev. = 1,296.04, +14.86	
1,296.04, +14.86	Connect to Exist. 8" WL

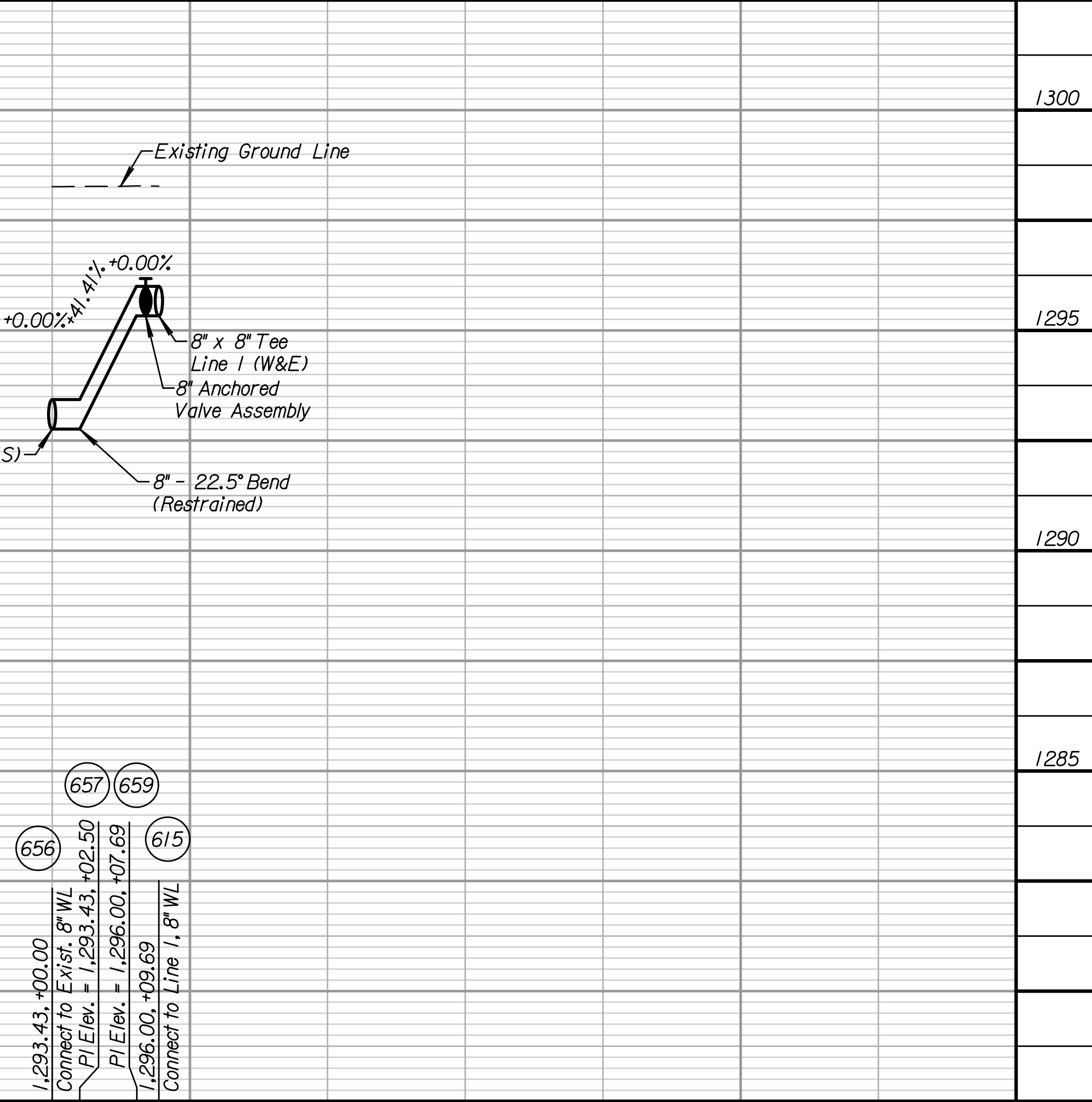
200



Note:  
For Water Line Information and details,  
See Sheet 87, WL asubuilt Pg 1

It is the Contractor's responsibility to contact &  
coordinate with the utility companies prior to the  
installation of the water lines to locate any existing  
utilities that have not been previously located or new  
utilities that have been relocated.

1300	
1295	
1290	
1285	



1,293.43, +00.00	Connect to Exist. 8" WL
PI Elev. = 1,293.43, +02.50	
PI Elev. = 1,296.00, +07.69	
1,296.00, +09.69	Connect to Line 1, 8" WL

300

**Tran Systems**  
245 NORTH WACO  
SUITE 222  
WICHITA, KANSAS 67202  
PHONE: 316-303-3000  
FAX: 316-303-0166

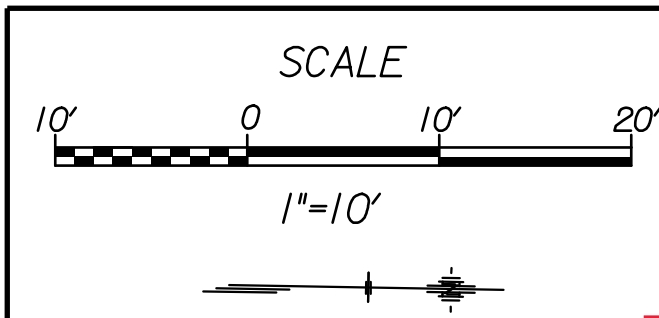
Professional Engineer  
24843  
7-5-17  
KANSAS

CONSULTANTS:  
**LK ARCHITECTURE, INC.**  
345 RIVERVIEW  
SUITE 200  
WICHITA, KANSAS 67208  
PHONE: 316-268-0230

1ST STREET IMPROVEMENTS  
SANTA FE TO WASHINGTON IN OLD TOWN  
WICHITA, KANSAS  
CITY OF WICHITA

REVISIONS:	MARK	DATE	DESCRIPTION

PROJ NO: 472-85285  
SCALE: 1"=10'  
DATE: 7/5/2017  
DESIGNED BY: TAU  
DRAWN BY: TAU  
CHECKED BY: MDB  
SHEET TITLE:  
**1ST STREET WATERLINE IMPROVEMENTS WATER LINE 2 & 3**  
SHEET NO.  
**89**  
SHEET 89 OF 90



Cross and Valves x2  
 Valve - Clow F6100 Series (N)  
 14.7' W of Centerline Rock Island  
 33' S of Centerline 1st Street  
 Valve - Clow F-6100 Series (S)  
 14.7' W of Centerline Rock Island  
 37' S of Centerline 1st Street

See Sheet 87, WL Asbuilts Pg 1  
 Sta. 19+16.13, 31.85' Rt. =  
 Sta. 400+06.80, Water Line 4 =  
 Sta. 104+14.91, Water Line 1  
 Connect to 8"x8" Cross, Water Line 1  
 Install 9.81 LF 8" Pipe (DCL)(N)  
 N: 1686499.2376  
 E: 1651572.8595

90° Bend (Horizontal) Rotated  
 14.7' W of Centerline Rock Island  
 39.6' S of Centerline 1st Street  
 Megalug

661  
 Sta. 19+16.14, 37.11' Rt. =  
 Sta. 400+04.80, Water Line 4  
 Install 1 - 90.0° Bend (N)  
 Install 5.27 LF 8" Pipe (DCL)(N)  
 N: 1686493.9713  
 E: 1651572.9607

90° Bend (Horizontal) Rotated  
 8.5' W of Centerline Rock Island  
 39.6' S of Centerline 1st Street  
 Megalug

660  
 Sta. 19+24.64, 37.21' Rt. =  
 Sta. 400+00.00, Water Line 4  
 Remove 15.20 LF Exist. Water Line (N)  
 Remove 2 - Exist. 8" Water Valve Assemblies (N)  
 & Return to 1701 Sim Park Drive  
 Connect to Exist. 8" Water Line  
 Install 1 - 90.0° Bend (W)  
 Install 1 - 8" Anchored Valve Assembly [Valve at Cross]  
 Install 8.50 LF 8" Pipe (DCL)(W)  
 N: 1686494.0099  
 E: 1651581.4606

90° Bend (Horizontal) Rotated  
 14.7' W of Centerline Rock Island  
 27.3' S of Centerline 1st Street  
 Megalug

662  
 Sta. 19+16.09, 22.04' Rt. =  
 Sta. 400+12.99, Water Line 4 =  
 Install 1 - 90.0° Bend (E)  
 Install 8.72 LF 8" Pipe (DCL)(E)  
 N: 1686509.0464  
 E: 1651572.6709

90° Bend (Horizontal) Rotated  
 8.5' W of Centerline Rock Island  
 27.3' S of Centerline 1st Street  
 Megalug

663  
 Sta. 19+24.82, 22.01' Rt. =  
 Sta. 400+18.11, Water Line 4 =  
 Install 1 - 8" Anchored Valve Assembly [Valve at Cross]  
 Install 1 - 90.0° Bend (N)  
 Connect to Exist. 8" Water Line  
 N: 1686509.2140  
 E: 1651581.3915

See Sheet 88  
 WL Asbuilts Pg 2

633  
 Sta. 21+11.28, 33.63' Rt. =  
 Sta. 500+06.26, Water Line 5 =  
 Sta. 106+14.28, Water Line 1  
 Connect to 8"x8" Cross, Water Line 1  
 Install 13.00 LF 8" Pipe (N)  
 N: 1686500.9903  
 E: 1651768.0847

45° Bend  
 11.4' W of Centerline Mosley  
 38.5' S of Centerline 1st Street  
 Megalug

665  
 Sta. 21+11.28, 37.56' Rt. =  
 Sta. 500+02.32, Water Line 4  
 Install 1 - 45.0° Bend (N)  
 Install 3.93 LF 8" Pipe (DCL)(N)  
 N: 1686497.0591  
 E: 1651768.1603

45° Bend  
 9.8' W of Centerline Mosley  
 40.5' S of Centerline 1st Street  
 Megalug

664  
 Sta. 21+12.93, 39.21' Rt. =  
 Sta. 500+00.00, Water Line 5  
 Remove 20.19 LF Exist. Water Line (N)  
 Remove Exist. 8" Water Valve Assembly (N)  
 & Return to 1701 Sim Park Drive  
 Install 2.32 LF 8" Pipe (DCL)(N/W)  
 Connect to Exist. 8" Water Line  
 N: 1686495.4482  
 E: 1651769.8343

45° Bend  
 11.4' W of Centerline Mosley  
 29.6' S of Centerline 1st Street  
 Megalug

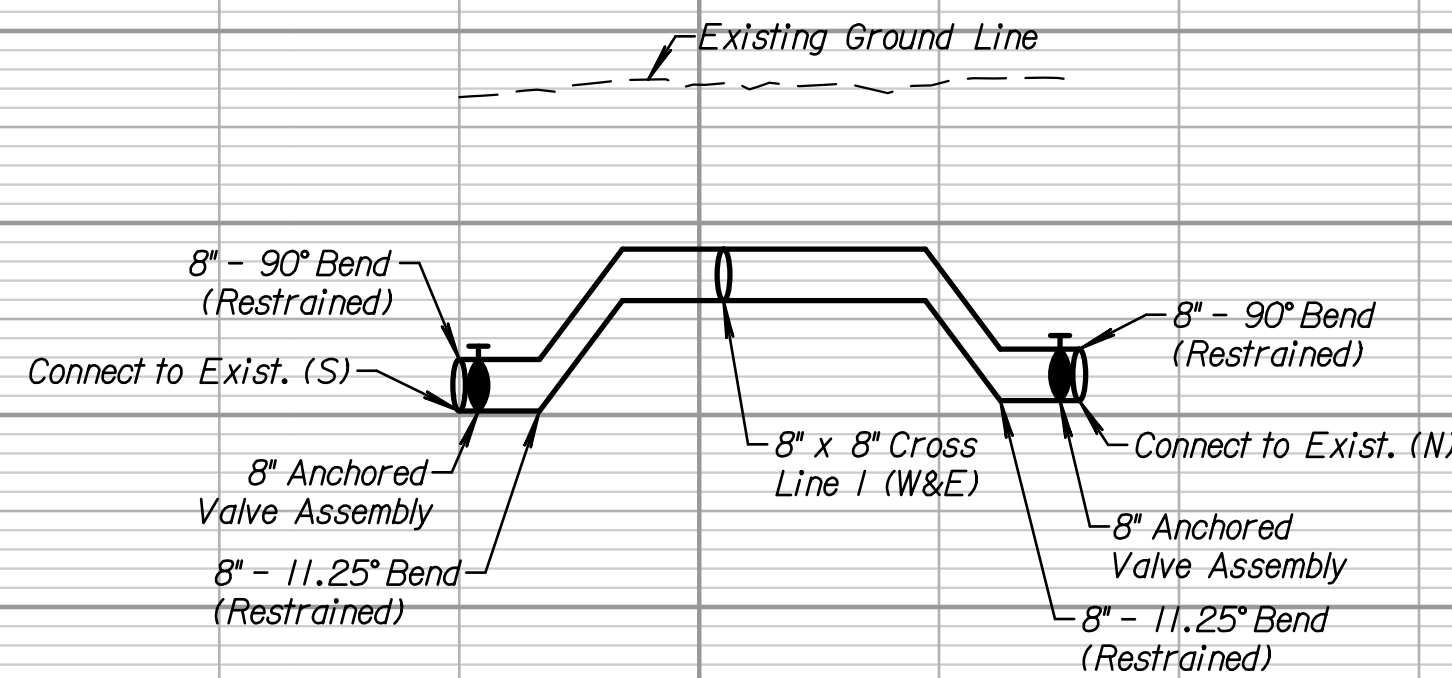
666  
 Sta. 21+11.27, 20.63' Rt. =  
 Sta. 500+19.26, Water Line 5 =  
 Install 1 - 45.0° Bend (NE)  
 Install 2.28 LF 8" Pipe (DCL)(NE)  
 N: 1686512.9910  
 E: 1651767.8348

45° Bend and Coupler  
 45° Bend - 9.8' W of Centerline Mosley  
 28.3' S of Centerline 1st Street  
 Coupler - 9.8' W of Centerline Mosley  
 25' S of Centerline 1st Street  
 Megalug  
 and details, See Sheets 87-88

667  
 Sta. 21+12.88, 19.01' Rt. =  
 Sta. 500+21.54, Water Line 5 =  
 Install 1 - 45.0° Bend (N)  
 Connect to Exist. 8" Water Line  
 N: 1686515.6358  
 E: 1651769.4175

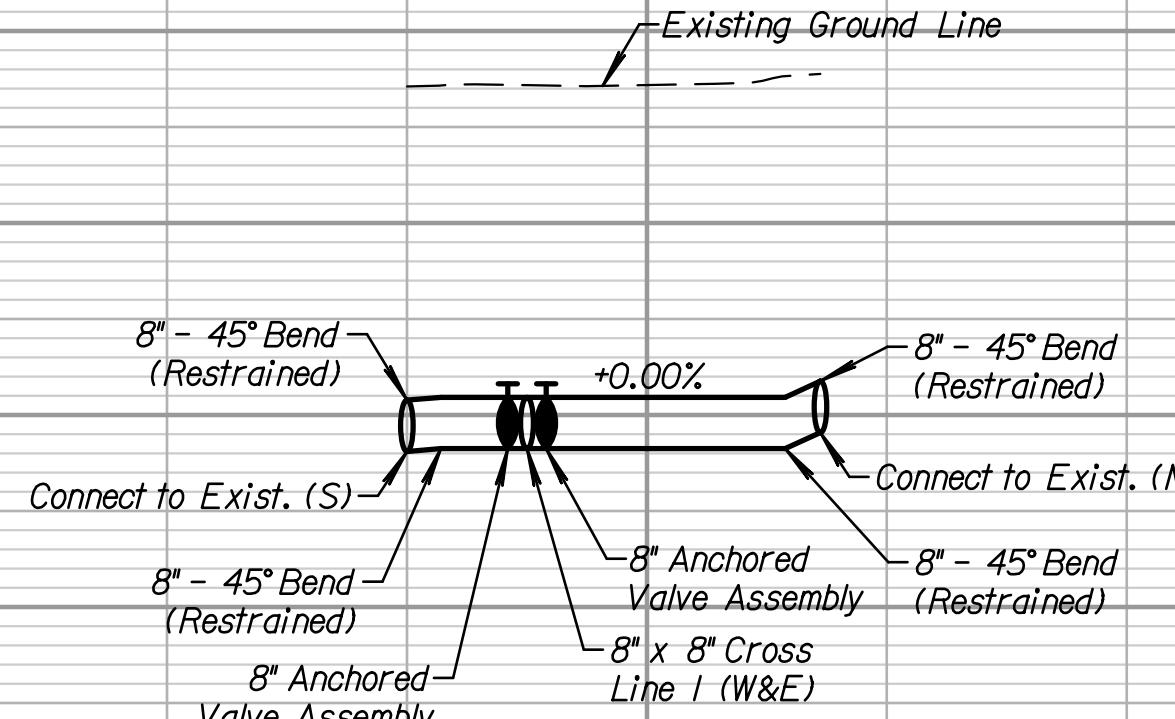
It is the Contractor's responsibility to contact & coordinate with the utility companies prior to the installation of the water lines to locate any existing utilities that have not been previously located or new utilities that have been relocated.

Utilities shown in the profile are shown at approximate depths. The Contractor is responsible for field verifying the locations of utilities prior to construction in that area.



673  
 1,294.80, +00.00  
 Connect to Exist. 8" WL  
 P.I. Elev. = 1,293.22, +04.19  
 661  
 P.I. Elev. = 1,294.80, +08.50  
 621  
 P.I. Elev. = 1,294.66, +13.77  
 Connect to Line 1, 8" WL  
 662  
 P.I. Elev. = 1,294.94, +24.28  
 674  
 P.I. Elev. = 1,293.36, +28.19  
 663  
 1,294.94, +32.30  
 Connect to Exist. 8" WL

400



665  
 1,294.36, +00.00  
 Connect to Exist. 8" WL  
 P.I. Elev. = 1,291.47, +02.32  
 633  
 1,291.47, +06.26  
 Connect to Line 1, 8" WL  
 666  
 P.I. Elev. = 1,291.47, +19.26  
 667  
 1,294.44, +21.54  
 Connect to Exist. 8" WL

500

**Tran Systems**  
 245 NORTH WACO  
 SUITE 222  
 WICHITA, KANSAS 67202  
 PHONE: 316-303-3000  
 FAX: 316-303-0166

Professional Engineer  
 License No. 24843  
 State of Kansas  
 Expires 7-5-17

CONSULTANTS:  
**LK ARCHITECTURE, INC.**  
 345 RIVERVIEW  
 SUITE 200  
 WICHITA, KANSAS 67208  
 PHONE: 316-268-0230

1ST STREET IMPROVEMENTS  
 SANTA FE TO WASHINGTON IN OLD TOWN  
 WICHITA, KANSAS  
**CITY OF WICHITA**

REVISIONS:	MARK	DATE	DESCRIPTION

PROJ NO: 472-85285  
 SCALE: 1"=10'  
 DATE: 7/5/2017  
 DESIGNED BY: TAU  
 DRAWN BY: TAU  
 CHECKED BY: MDB

SHEET TITLE:  
**1ST STREET WATERLINE IMPROVEMENTS WATER LINE 4 & 5**

SHEET NO.  
**90**  
 SHEET 90 OF 90

taumdel 7/5/2017 4:00:30 PM c:\tran\systems\proj\local\tran\systems\proj\taumdel\048273\C-UTL-W01-104.dgn