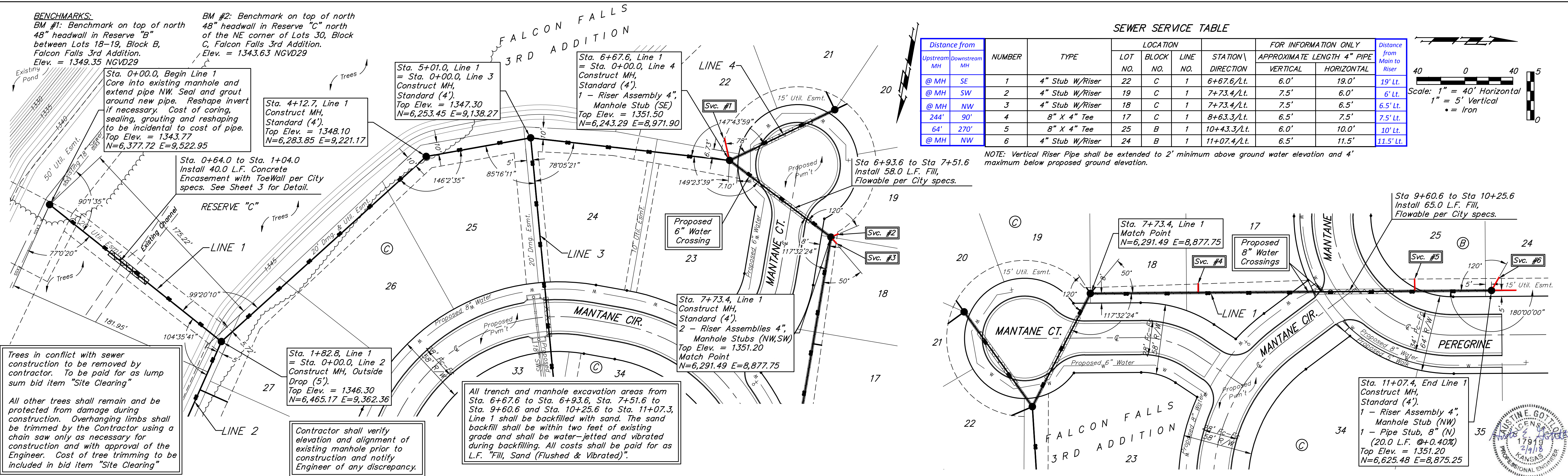


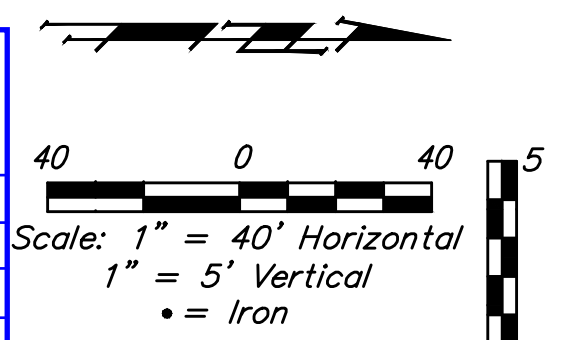
BENCHMARKS:
 BM #1: Benchmark on top of north 48" headwall in Reserve "B" between Lots 18-19, Block B, Falcon Falls 3rd Addition. Elev. = 1349.35 NGVD29

BM #2: Benchmark on top of north 48" headwall in Reserve "C" north of the NE corner of Lots 30, Block C, Falcon Falls 3rd Addition. Elev. = 1343.63 NGVD29



SEWER SERVICE TABLE

Distance from Upstream MH	Downstream MH	NUMBER	TYPE	LOCATION			FOR INFORMATION ONLY		Distance from Main to Riser	
				LOT NO.	BLOCK NO.	LINE NO.	STATION	DIRECTION		APPROXIMATE LENGTH 4" PIPE
@ MH	SE	1	4" Stub W/Riser	22	C	1	6+67.6/Lt.	6.0'	19.0'	19' Lt.
@ MH	SW	2	4" Stub W/Riser	19	C	1	7+73.4/Lt.	7.5'	6.0'	6' Lt.
@ MH	NW	3	4" Stub W/Riser	18	C	1	7+73.4/Lt.	7.5'	6.5'	6.5' Lt.
244'	90'	4	8" X 4" Tee	17	C	1	8+63.3/Lt.	6.5'	7.5'	7.5' Lt.
64'	270'	5	8" X 4" Tee	25	B	1	10+43.3/Lt.	6.0'	10.0'	10' Lt.
@ MH	NW	6	4" Stub W/Riser	24	B	1	11+07.4/Lt.	6.5'	11.5'	11.5' Lt.



NOTE: Vertical Riser Pipe shall be extended to 2' minimum above ground water elevation and 4' maximum below proposed ground elevation.

Trees in conflict with sewer construction to be removed by contractor. To be paid for as lump sum bid item "Site Clearing"

All other trees shall remain and be protected from damage during construction. Overhanging limbs shall be trimmed by the Contractor using a chain saw only as necessary for construction and with approval of the Engineer. Cost of tree trimming to be included in bid item "Site Clearing"

Contractor shall verify elevation and alignment of existing manhole prior to construction and notify Engineer of any discrepancy.

All trench and manhole excavation areas from Sta. 6+67.6 to Sta. 6+93.6, Sta. 7+51.6 to Sta. 9+60.6 and Sta. 10+25.6 to Sta. 11+07.3, Line 1 shall be backfilled with sand. The sand backfill shall be within two feet of existing grade and shall be water-jetted and vibrated during backfilling. All costs shall be paid for as L.F. "Fill, Sand (Flushed & Vibrated)".

