

BENCHMARKS:
 BM #1: Benchmark on top of north 48" headwall in Reserve "B" between Lots 18-19, Block B, Falcon Falls 3rd Addition. Elev. = 1349.35 NGVD29

BM #2: Benchmark on top of north 48" headwall in Reserve "C" north of the NE corner of Lots 30, Block C, Falcon Falls 3rd Addition. Elev. = 1343.63 NGVD29

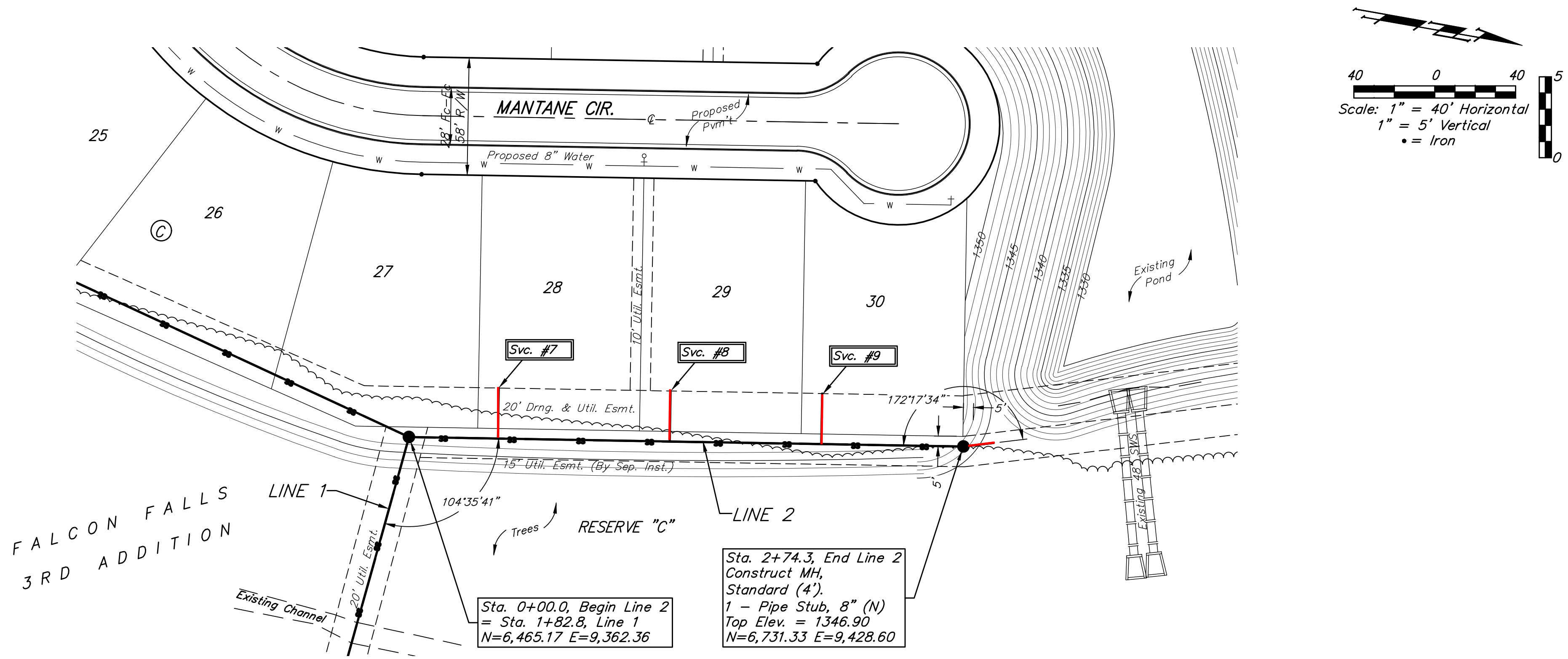
Trees in conflict with sewer construction to be removed by contractor. To be paid for as lump sum bid item "Site Clearing"

All other trees shall remain and be protected from damage during construction. Overhanging limbs shall be trimmed by the Contractor using a chain saw only as necessary for construction and with approval of the Engineer. Cost of tree trimming to be included in bid item "Site Clearing"

SEWER SERVICE TABLE

Distance from Main to Riser	Distance from		NUMBER	TYPE	LOCATION				FOR INFORMATION ONLY	
	Upstream MH	Downstream MH			LOT NO.	BLOCK NO.	LINE NO.	STATION \ DIRECTION	APPROXIMATE LENGTH 4" PIPE	VERTICAL
15' Lt.	230'	44'	7	8" X 4" Tee	28	C	2	0+43.9/Lt.	12.0'	15.0'
15.5' Lt.	145'	129'	8	8" X 4" Tee	29	C	2	1+28.9/Lt.	11.0'	15.5'
16' Lt.	70'	204'	9	8" X 4" Tee	30	C	2	2+03.9/Lt.	10.5'	16.0'

NOTE: Vertical Riser Pipe shall be extended to 2' minimum above ground water elevation and 4' maximum below proposed ground elevation.



FALCON FALLS 3RD ADDITION

Sta. 2+74.3, End Line 2
 Construct MH, Standard (4').
 1 - Pipe Stub, 8" (N)
 Top Elev. = 1346.90
 N=6,731.33 E=9,428.60

